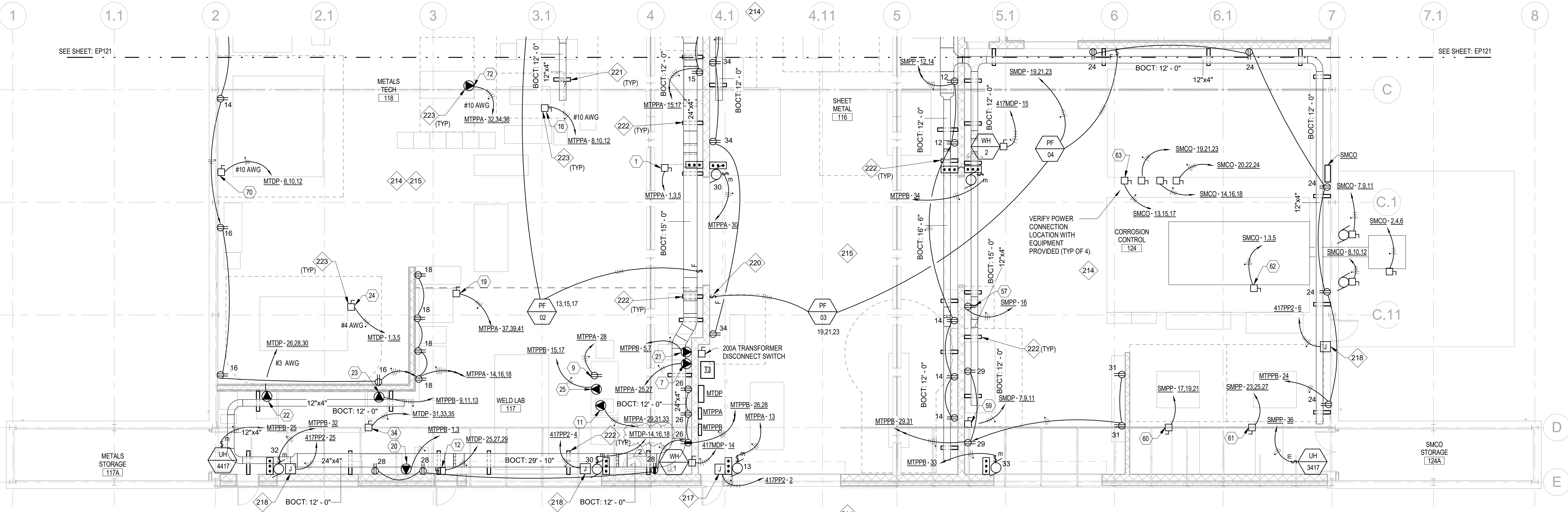


D

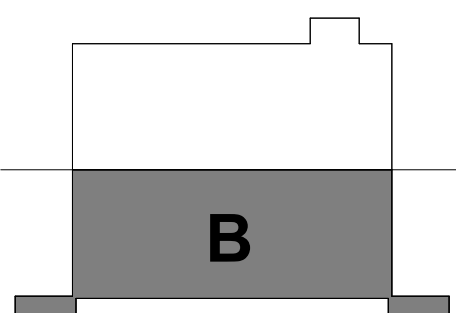
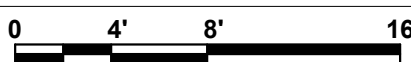
C

B

A



BUILDING 417 - FIRST FLOOR POWER PLAN AREA B
SCALE: 1/8" = 1'-0"



KEY PLAN

GENERAL NOTES

- SEE SHEET E-001 FOR LEGEND & GENERAL NOTES.
- SEE SHEET E-501 FOR CONTROL OF SWITCHED DEVICES.
- SEE SHOP EQUIPMENT SCHEDULE ON SHEET E-722.

KEYED NOTES

- 214 WALL MOUNTED RECEPTACLES IN THIS ROOM INSTALLED AT 44" AFF.
- 215 UTILIZE CABLE TRAY WITH TRAY CABLE (SIZED AS INDICATED ON SHOP EQUIPMENT DATA SCHEDULE, SHEET E-722). TRANSITION TO CONDUIT FOR DROPS OUT OF TRAY. PROVIDE FLOOR MOUNTED STRUT STANCHION TO MOUNT DEVICE AT 48" AFF.
- 217 4"x6" OUTLET BOX MTD. 48" AFF WITH DEDICATED 20A, 120 VAC CIRCUIT FOR THE FUTURE ACCESS CONTROL PANEL TO BE PROVIDED BY OTHERS.
- 218 4"x6" OUTLET BOX MTD 108" AFF ON THE SECURE SIDE OF THE ENTRY DOOR. OUTLET BOX SHALL INCLUDE A DEDICATED 20A, 120 VAC CIRCUIT FOR THE FUTURE KEYPAD/CARD READER ENTRY SYSTEM TO BE PROVIDED BY OTHERS.
- 220 INSTALL FAN CONTROLLER PROVIDED WITH FAN. PROVIDE 3/4"C - 5#12 FROM FAN TO CONTROLLER LOCATION.
- 221 COORDINATE CABLE TRAY FLOOR SUPPORT LOCATION WITH EQUIPMENT LAYOUT AND INSTALLATION. VERIFY LOCATIONS AND TRAY MOUNTING HEIGHT WITH USERS. SEE TRAY SUPPORT DETAIL A3 ON SHEET S-523.
- 222 PROVIDE WALL SUPPORT IN ACCORDANCE WITH TRAY MANUFACTURER'S RECOMMENDATIONS. SPACE SUPPORT TO COMPLY WITH LOADING REQUIREMENTS OF TRAY PROVIDED.
- 223 PROVIDE FLOOR MOUNTED STRUT STANCHION FOR DEVICE MOUNTED AT 48" AFF. COORDINATE LOCATIONS WITH EQUIPMENT INSTALLATION.



US Army Corps
of Engineers
LOUISVILLE
DISTRICT

DATE	DESCRIPTION	MARK
07/25/2019	2	2

ISSUE DATE: 06-10-2019	SOLICITATION NO.: W010P-17-C-0036
DESIGNED BY: K. BANOVIC	CHECKED BY: K. HARRIS
DRAWN BY: B. B. B.	FILE NUMBER:
SUBMITTED BY:	FILE NAME:

US ARMY CORPS OF ENGINEERS
LOUISVILLE DISTRICT
LOUISVILLE, KENTUCKY

RS&H
WOOLPERT
A JOINT VENTURE

PITTSBURGH AIR RESERVE STATION
CONSOLIDATED BUILDING
RENOVATIONS
PN: JLSS160003 / JLSS160005 / JLSS160007
BUILDING 417 - FIRST FLOOR POWER
PLAN - AREA B

SHEET ID

EP122

REVISED AS-BUILT