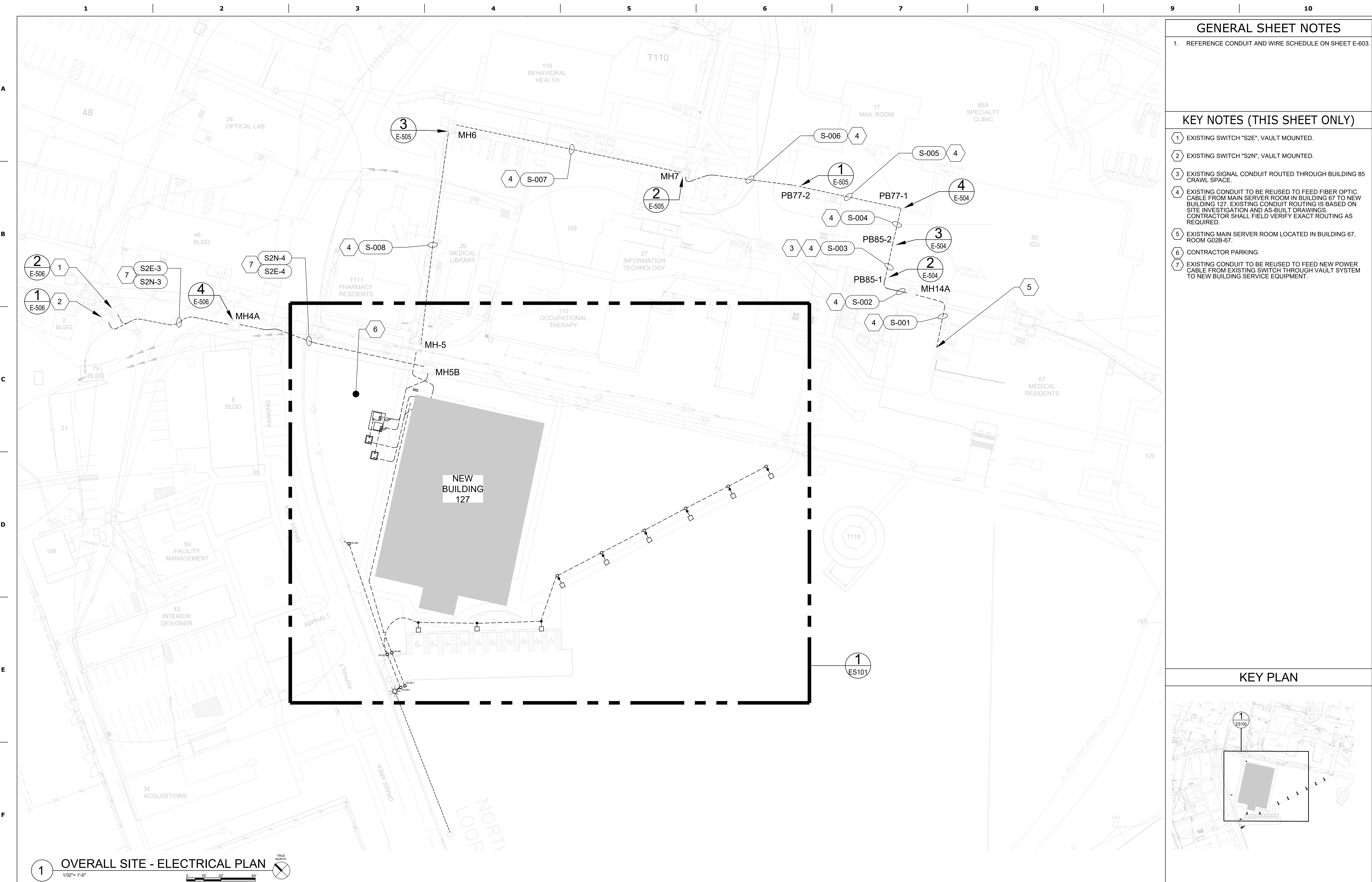


GENERAL NOTES		ELECTRICAL LEGEND						SHEET INDEX	
<div>1. "GENERAL NOTES" APPLY TO ALL ELECTRICAL DRAWINGS. "SHEET NOTES" APPLY TO ONLY THE SHEETS ON WHICH THEY OCCUR. "KEYNOTES" APPLY ONLY WHERE CALLED OUT.</div> <div>2. ALL EQUIPMENT SHOWN IN BOLD IS TO BE PROVIDED, OR MODIFIED BY CONTRACTOR UNLESS OTHERWISE NOTED.</div> <div>3. CONTRACTOR SHALL PROVIDE CONDUIT AND WIRE FROM ALL CONTROL DEVICES TO LUMINAIRES FOR CONTROL OF LUMINAIRES SHOWN.</div> <div>4. LUMINAIRES SHOWN ON DRAWINGS FOR QUANTITY AND CIRCUITING ONLY. SEE ARCHITECTURAL DRAWINGS FOR EXACT LOCATIONS AND ELEVATIONS.</div> <div>5. ALL FEEDERS AND BRANCH CIRCUITS SHALL CONTAIN AN EQUIPMENT GROUND CONDUCTOR SIZED PER NEC TABLE 250.122. ALL WIRING IS BASED ON CU COPPER PER NEC TABLE 310.15(B)(16), USING 75°C AMPACITIES FOR FEEDERS.</div> <div>6. BRANCH CIRCUIT CONDUCTORS, NOT OTHERWISE IDENTIFIED SHALL BE A MINIMUM 12 AWG FOR RUNS 70 FEET OR LESS AND A MINIMUM 10 AWG FOR RUNS GREATER THAN 70 FEET. QUANTITY AND SIZE SHALL BE "AS REQUIRED" TO SERVE AND CONTROL DEVICES OR EQUIPMENT WITH A MAXIMUM VOLTAGE DROP OF THREE PERCENT. WHERE CONTRACTOR CHOOSES TO RUN MORE THAN THREE CURRENT CARRYING CONDUCTORS WITHIN ONE RACEWAY OR CABLE, CONDUCTORS SHALL BE INCREASED IN SIZE TO COMPENSATE FOR THE DERATING REQUIRED PER NEC SECTION 310.15. CONDUCTOR AMPACITIES SHALL BE TAKEN FROM THE 75°C COLUMN.</div> <div>7. MINIMUM CONDUIT IN EXTERIOR AND UNDERGROUND LOCATIONS TO BE 1" UNLESS NOTED OTHERWISE ON PLANS. CONDUITS FROM LUMINAIRES TO LOCAL USER CONTROL DEVICES (SWITCHES, OCCUPANCY SENSORS, ETC.) MAY BE 3/4" OR AS INDICATED IN SPECIFICATIONS. PROVIDE ADDITIONAL CONDUCTOR FOR UNSWITCHED "HOT" TO LIGHTING LUMINAIRES WITH EMERGENCY POWER BATTERIES OR GENERATOR TRANSFER DEVICES.</div> <div>8. WIRING FOR EMERGENCY LIGHTING CIRCUITS OR OTHER EMERGENCY EQUIPMENT SHALL BE KEPT ENTIRELY INDEPENDENT OF ALL OTHER WIRING AND EQUIPMENT AND SHALL MEET ALL REQUIREMENTS OF NEC SECTION 700.10.</div> <div>9. CONTRACTOR SHALL PROVIDE CONDUIT AND WIRE FOR ALL CIRCUITS SHOWN ON DRAWINGS.</div> <div>10. WHERE EQUIPMENT PART NUMBERS ARE SHOWN ON THESE PLANS THEY SHALL SUPERCEDE THE REQUIREMENTS OF THE SPECIFICATIONS.</div> <div>11. ALL CONDUITS SHALL BE CONCEALED UNLESS OTHERWISE NOTED.</div> <div>12. COORDINATE EXACT LOCATION OF ALL OUTLETS, COMBINATION CLOCKS/SPEAKERS, SPEAKER, FA DEVICES, ETC., WITH THE ARCHITECTURAL ELEVATIONS PRIOR TO COMMENCING WORK.</div> <div>13. COORDINATE USE OF CEILING SPACE WITH ALL TRADES PRIOR TO COMMENCING WORK. MANY AREAS ARE VERY CONGESTED AND REQUIRE CLOSE COORDINATION.</div> <div>14. COORDINATE INSTALLATION REQUIREMENTS FOR OCCUPANCY SENSOR LIGHTING CONTROL WITH THE MANUFACTURER. PROVIDE ALL APPURTENANCES AS REQUIRED PER THE MANUFACTURER REQUIREMENTS. PROVIDE ADDITIONAL SENSORS AS REQUIRED TO PROVIDE COMPLETE COVERAGE IN EACH ROOM CONTROLLED BY OCCUPANCY SENSORS.</div> <div>15. COORDINATE THE INSTALLATION OF ALL EXTERIOR DEVICE AND FIXTURE BOXES WITH MASONRY/CONTRACTOR. CUT ALL FLUTED BLOCKS SO THAT THE BOX IS INSTALLED FLUSH. SEE ARCHITECTURAL DETAILS FOR MOUNTING REQUIREMENTS.</div> <div>16. SEAL ALL CONDUIT PENETRATIONS OF FLOORS & FIRE RATED ASSEMBLIES WITH U.L. APPROVED MATERIALS AND METHODS TO MAINTAIN FIRE RATING. PROTECT ALL OPENINGS FOR STEEL ELECTRICAL BOXES IN FIRE RATED WALLS WITH U.L. APPROVED MATERIALS AND METHODS TO MAINTAIN THE FIRE INTEGRITY.</div> <div>17. PROVIDE ADDITIONAL CONDUIT SLEEVES THROUGH WALLS WHERE REQUIRED FOR ROUTING OF SIGNAL SYSTEM WIRING NOT REQUIRED TO BE RUN IN CONDUIT. EACH SLEEVE SHALL BE DEDICATED TO EACH SIGNAL SYSTEM. SLEEVES ROUTED THROUGH RATED WALLS SHALL BE SEALED WITH U.L. MATERIALS AND METHODS TO MAINTAIN FIRE RATING OF WALL.</div> <div>18. SEE MECHANICAL/PLUMBING DRAWINGS AND SUBMITTALS FOR EXACT LOCATIONS AND ADDITIONAL ELECTRICAL REQUIREMENTS PRIOR TO INSTALLATION.</div> <div>19. ALL LOW VOLTAGE SYSTEMS NOT RUN IN CONDUIT SHALL HAVE MINIMUM 1". ROUTED FROM THE DEVICE THROUGH WALLS INTO THE ACCESSIBLE CEILING SPACE. NO CABLING SHALL BE ROUTED IN THE WALLS OR INACCESSIBLE LOCATION WITHOUT CONDUIT.</div> <div>20. GFCI RECEPTACLES ARE REQUIRED WITHIN 6 FT OF ALL SINKS, ON THE EXTERIOR BELOW 8 FT FROM THE FINISH FLOOR, AND ON ALL ROOFS.</div> <div>21. UNLESS SPECIFICALLY SHOWN ON THESE PLANS NO STRUCTURAL MEMBER SHALL BE CUT, NEITHER DRILLED NOR NOTCHED WITHOUT PRIOR WRITTEN AUTHORIZATION FROM THE STRUCTURAL ENGINEER AND THE COR.</div> <div>22. CONTRACTOR SHALL PROVIDE DUCT SEAL WHERE CONDUITS TRANSITION FROM AREAS THAT CREATE TEMPERATURE DIFFERENTIAL PER NEC.</div> <div>23. PRIMARY CONDUIT SWEEPS SHALL BE LONG RADIIUS.</div> <div>24. ALL "RMC" - RIGID METAL CONDUIT IN CONTACT WITH THE EARTH SHALL BE WRAPPED WITH CORROSION TAPE PER NEC.</div> <div>25. ALL I-BOXES SHALL BE MARKED WITH INDELEIBLE MARKER INDICATING CONDUIT NUMBER AND PANEL NUMBER.</div> <div>26. THE ELECTRICAL CONTRACTOR IS RESPONSIBLE FOR PROVIDING ALL 120 VOLT POWER FOR THE MECHANICAL CONTROLS. COORDINATE EXACT REQUIREMENTS WITH THE CONTROL CONTRACTOR.</div> <div>26.1. CONTRACTOR SHALL PROVIDE NEW GATEWAY/ROUTER AS REQUIRED. CONTRACTOR SHALL PROVIDE & INSTALL THE GATEWAY/ROUTER AND CORRESPONDING 20A, 120V CIRCUIT TO POWER UNIT.</div> <div>27. ALL ELECTRICAL WORK SHALL BE COMPLETED WITH ALL PROXIMATE ELECTRICAL CIRCUITS DE-ENERGIZED (I.E. A NEW BREAKER OR CIRCUIT CANNOT BE ADDED TO A PANEL UNLESS THE PANEL IS COMPLETELY DE-ENERGIZED), OR THE CONTRACTOR MUST COMPLY WITH NFPA 70E FOR WORK ON ENERGIZED SERVICE. THE VA WILL DETERMINE IF THE ELECTRICAL SERVICE CAN BE SHUTDOWN OR IT WILL HAVE TO BE WORKED HOT DEPENDING ON THE CRITICALITY OF THE AREA BEING AFFECTED. IF THE WORK MUST BE DONE WITH THE SERVICE LIVE, THE CONTRACTOR IS RESPONSIBLE FOR PROVIDING ALL REQUIRED PROTECTIVE TOOLS, EQUIPMENT, AND CLOTHING, AND MUST FOLLOW THE JOB SPECIFIC WORK PLAN PREPARED BY THE VA. WORK THAT REQUIRES SHUTTING DOWN ELECTRICAL SERVICE MAY HAVE TO BE ACCOMPLISHED DURING OTHER THAN NORMAL DUTY HOURS.</div>		<div>LUMINAIRES (DIMENSIONS OF SYMBOL WILL VARY DEPENDING ON LUMINAIRE)</div> <div>LUMINAIRE TYPE IDENTIFICATION: LUMINAIRES INDICATED BY THE FOLLOWING NOTATIONS: L# = NEW LUMINAIRE UON, REFER TO LUMINAIRE SCHEDULE FOR DETAILS U# = NEW LUMINAIRE UON IN DWELLING UNIT, REFER TO LUMINAIRE SCHEDULE FOR DETAILS S# = NEW LUMINAIRE UON, EXTERIOR SITE, REFER TO LUMINAIRE SCHEDULE FOR DETAILS E# = EXISTING LUMINAIRE, UNLESS OTHERWISE NOTED EL# = EXISTING LUMINAIRE TO BE RELOCATED EN# = NEW LOCATION OF EXISTING LUMINAIRE</div> <div><div><div><div></div><div>LUMINAIRE, DOWNLIGHT</div></div><div><div></div><div>LUMINAIRE, SURFACE</div></div><div><div></div><div>LUMINAIRE, RECESSED</div></div><div><div></div><div>STRIP, SURFACE</div></div><div><div></div><div>LUMINAIRE, WALL MOUNT</div></div><div><div></div><div>LIGHTED EXIT SIGN, ARROW INDICATES DIRECTION</div></div><div><div></div><div>EMERGENCY WALLPACK</div></div><div><div></div><div>LUMINAIRE, POLE MOUNTED</div></div><div><div></div><div>LUMINAIRE, PENDANT MOUNTED</div></div><div><div></div><div>HALF SHADED FIXTURE DENOTES: EMERGENCY LUMINAIRE</div></div></div></div> <div><div>1</div><div>LINE VOLTAGE SWITCH, NUMBER OF BUTTONS PER SWITCHING ZONES SHOWN. AUTO-OFF VIA OCCUPANCY SENSOR. PROVIDE POWER PACK(S) IN ACCESSIBLE CEILING SPACE AS NECESSARY. # = 3 OR 4 FOR 3-WAY/4-WAY CONDITIONS a = SWITCHING ZONE K = KEVED SWITCH</div></div> <div><div>2</div><div>LINE VOLTAGE WALL OCCUPANCY SENSOR. a = SWITCHING ZONE D = DIMMER SWITCH</div></div> <div><div>3</div><div>LINE VOLTAGE MANUAL TOGGLE SWITCH, NUMBER OF BUTTONS PER SWITCHING ZONES SHOWN. # = 3 OR 4 FOR 3-WAY/4-WAY CONDITIONS a = SWITCHING ZONE K = KEVED SWITCH</div></div> <div><div>4</div><div>LINE VOLTAGE DIMMER SWITCH, NUMBER OF DIMMER SWITCHES PER SWITCHING ZONES SHOWN. AUTO-OFF VIA OCCUPANCY SENSOR. PROVIDE POWER PACK(S) IN ACCESSIBLE CEILING SPACE AS NECESSARY. # = 3 OR 4 FOR 3-WAY/4-WAY CONDITIONS a = SWITCHING ZONE</div></div> <div><div>5</div><div>LINE VOLTAGE MANUAL DIMMER SWITCH, NUMBER OF DIMMER SWITCHES PER SWITCH ZONES SHOWN. AUTO-OFF VIA OCCUPANCY SENSOR. PROVIDE POWER PACK(S) IN ACCESSIBLE CEILING SPACE AS NECESSARY. # = 3 OR 4 FOR 3-WAY/4-WAY a = SWITCHING ZONE</div></div> <div><div>OS</div><div>ALL INTERIOR AREAS TO HAVE MANUAL ON/AUTO OFF LIGHTING CONTROL WITH THE USE OF DUAL TECHNOLOGY OCCUPANCY SENSORS. EXCEPT WHERE A WALL SWITCH OCCUPANCY SENSOR IS NOTED. SENSORS TO BE CEILING MOUNTED. VERIFY LAYOUT WITH VENDOR SHOP DRAWINGS PRIOR TO PLACEMENT. ADDITIONAL POWER PACK(S) SHALL BE PROVIDED FOR ROOMS WITH CONTROLLED RECEPTACLES.</div></div> <div><div>DS</div><div>DAYLIGHT SENSOR FOR DAYLIGHT HARVESTING CONTROL. SENSOR SHALL BE CEILING MOUNTED.</div></div> <div><div>POWER</div><div><div><div><div></div><div>2 = DOUBLE POLE SWITCH</div></div><div><div></div><div>3 = THREE WAY SWITCH</div></div><div><div></div><div>K = KEY OPERATED SWITCH</div></div><div><div></div><div>T = SWITCH WITH TIMER</div></div></div><div><div></div><div>PHOTO ELECTRIC SENSOR</div></div><div><div></div><div>VARIABLE FREQUENCY DRIVE</div></div><div><div></div><div>DRAW OUT SWITCH/PLUG-RECEPTACLE CONNECTION</div></div><div><div></div><div>NORMALLY OPEN CONTACT (WHEN DE-ENERGIZED)</div></div><div><div></div><div>NORMALLY CLOSED CONTACT (WHEN DE-ENERGIZED)</div></div><div><div></div><div>HARDWIRED CONNECTION</div></div><div><div></div><div>JUNCTION BOX</div></div><div><div></div><div>SHUNT TRIP PUSH-BUTTON OR KEY-SWITCH</div></div><div><div></div><div>THERMOSTAT</div></div><div><div></div><div>PANELBOARD, SWITCHBOARD, OR SWITCHGEAR. DASHED BOX INDICATES CODE REQUIRED WORKING CLEARANCE</div></div><div><div></div><div>CONDUIT OR EQUIPMENT TO BE REMOVED</div></div><div><div></div><div>CONDUIT CONCEALED IN WALL, CEILING, UNDER FLOOR, IN FLOOR SLAB, OR ROUTED UNDERGROUND</div></div><div><div></div><div>CONDUIT EXPOSED</div></div><div><div></div><div>EXISTING CONDUIT EXPOSED, EXISTING TO REMAIN UNLESS OTHERWISE NOTED</div></div><div><div></div><div>EXISTING CONDUIT ROUTED UNDERGROUND, EXISTING TO REMAIN UNLESS OTHERWISE NOTED</div></div><div><div></div><div>OVERHEAD ELECTRICAL</div></div><div><div></div><div>EXTRA-HARD USAGE FLEXIBLE CORD</div></div><div><div></div><div>CONDUIT TURNED UP OR TOWARD</div></div><div><div></div><div>CONDUIT TURNED DOWN OR AWAY</div></div><div><div></div><div>CONDUIT CAPPED</div></div></div></div> <div><div>POWER (CONTINUED)</div><div><div><div></div><div>HH</div></div><div><div></div><div>PB</div></div><div><div></div><div>MANUAL OR AUTOMATIC TRANSFER SWITCH.</div></div><div><div></div><div>CIRCUIT BREAKER, RATING/NO. OF POLES WITH THERMAL MAGNETIC CIRCUIT BREAKER TRIP, UNLESS OTHERWISE NOTED</div></div><div><div></div><div>CIRCUIT BREAKER, MEDIUM VOLTAGE a = CIRCUIT BREAKER NUMBER b = FRAME SIZE</div></div><div><div></div><div>GROUND ROD IN GROUND ROD BOX</div></div><div><div></div><div>TRANSFORMER</div></div><div><div></div><div>TRAPPED KEY INTERLOCK NO = NORMALLY OPEN NC = NORMALLY CLOSED</div></div><div><div></div><div>MAIN LUGS ONLY</div></div><div><div></div><div>CURRENT TRANSFORMER, NUMBER INDICATES NUMBER OF C.T.'S</div></div><div><div></div><div>POTENTIAL TRANSFORMER, NUMBER INDICATES NUMBER OF C.T.'S</div></div><div><div></div><div>MOTOR</div></div><div><div></div><div>MAGNETIC MOTOR STARTER FV#R = FULL VOLTAGE NON-REVERSING FVR = FULL VOLTAGE REVERSING 00 = NEMA SIZE</div></div><div><div></div><div>MAGNETIC MOTOR STARTER W/DISCONNECT</div></div><div><div></div><div>DISCONNECT SWITCH, NON FUSED (80A) INDICATES AMPERAGE RATING</div></div><div><div></div><div>DISCONNECT SWITCH, FUSED 200=SWITCH RATING, 100=FUSE RATING</div></div><div><div></div><div>CIRCUIT BREAKER DISCONNECT (80A) INDICATES AMPERAGE RATING</div></div><div><div></div><div>MOTOR RATED SWITCH. WHERE "M" INDICATED, PROVIDE A MANUAL MOTOR STARTER W/OVERLOAD</div></div><div><div></div><div>UTILITY WATT HOUR METER</div></div><div><div></div><div>SPECIAL PURPOSE RECEPTACLE, RATING AS INDICATED</div></div><div><div></div><div>STANDARD RECEPTABLES: 125V, 20A 18" AFF. UON, TYPES: SIMPLEX /DUPLX /QUADRUPLX /FLOOR DUPLX /FLOOR QUADRUPLX</div></div><div><div></div><div>GFCI RECEPTABLES: 125V, 20A 18" AFF. UON, TYPES: SIMPLEX /DUPLX /QUADRUPLX</div></div><div><div></div><div>C = CEILING MOUNTED</div></div><div><div></div><div>S = HALF SWITCHED</div></div><div><div></div><div>IG = ISOLATED GROUND</div></div><div><div></div><div>TR = TAMPER RESISTANT</div></div><div><div></div><div>a = LOWER CASE LETTER INDICATES SWITCH CONTROL</div></div><div><div></div><div>2" = MEASUREMENT INDICATES HEIGHT ABOVE BACKSPLASH/MILLWORK</div></div><div><div></div><div>A = INDICATES MOUNT ABOVE BACKSPLASH/MILLWORK, COORDINATE HEIGHT WITH TRADES.</div></div><div><div></div><div>USB = INDICATES 20A 120V DUPLX RECEPTACLE WITH USB CHARGER</div></div><div><div></div><div>CT = SWITCHED RECEPT. INDICATES FULL CONTROLLED DEDICATED 20A 125V DUPLX</div></div><div><div></div><div>UC = UNDERCOUNTER</div></div><div><div></div><div>CH = SWITCHED RECEPT. INDICATES HALF CONTROLLED DEDICATED 20A 125V DUPLX</div></div><div><div></div><div>W = WEATHERPROOF/WHILE IN USE</div></div><div><div></div><div>RECEPTACLE ON EMERGENCY POWER</div></div><div><div></div><div>2-GANG COMPARTMENT BOX IN FLOOR FOR DATA, AND RECEPTACLE</div></div><div><div></div><div>DROP CORD, SINGLE CONVENIENCE OUTLET</div></div><div><div></div><div>ELECTRICAL STRIP MOLD</div></div></div></div> <div><div>COMMUNICATION OUTLETS</div><div>FOR ALL TELECOMMUNICATION OUTLETS, ROUTE 3/4" CONDUIT UNDERGROUND IF NECESSARY AND STUB TO ACCESSIBLE CEILING SPACE WITH CABLING AS DESCRIBED IN ELECTRICAL SPECIFICATIONS. # = INDICATES QUANTITY OF VOICE AND DATA JACKS</div><div><div></div><div>FLOOR MOUNTED TELECOMMUNICATIONS OUTLET. # = INDICATES QUANTITY OF VOICE AND DATA JACKS</div></div><div><div></div><div>WALL MOUNTED TELECOMMUNICATIONS OUTLET. 18" AFF UON. # = INDICATES QUANTITY OF VOICE AND DATA JACKS uo = UNDERCOUNTER</div></div><div><div></div><div>OUTLET, LETTER INDICATES AS FOLLOWS: a = AUDIO V = VIDEO I = INTERCOM</div></div><div><div></div><div>OUTLET, TELEVISION</div></div><div><div></div><div>BLANK = 4 11/16" MASTER ANTENNA OUTLET BOX W/BLANK COVER, MTD. 18" AFF UNLESS OTHERWISE NOTED.</div></div><div><div></div><div>CAMERA (CCTV SYSTEM). MTD 18" AFF</div></div><div><div></div><div>M = MONITOR (CCTV SYSTEM).</div></div></div> <div><div>COMMUNICATION</div><div><div></div><div>FIBEROPTICS LINE = FO</div></div><div><div></div><div>TELEPHONE LINE = T</div></div><div><div></div><div>SPEAKER, CEILING MOUNTED</div></div><div><div></div><div>SPEAKER, WALL MOUNTED. MTD. 7'-6" AFF UON.</div></div><div><div></div><div>RADIO CHANNEL SELECTOR FACILITIES, MTD. 4'-6" AFF UON. M = SPEAKER PROGRAM SELECTOR SWITCH & VOLUME CONTROL.</div></div><div><div></div><div>3-POLE TWIST-LOCK RECEPTACLE FOR MICROPHONE. MTD. 4'-6" AFF.</div></div><div><div></div><div>REMOTE DICTATING OUTLET MTD 1'-6" AFF. UON.</div></div><div><div></div><div>INTERCOM STATION (REFER TO SPECS. FOR FUNCTIONAL OPERATION OF INSTRUMENT & TYPE REQUIRED). S = STAFF STATION</div></div><div><div></div><div>WIRELESS ACCESS PORT, S = STAFF, G = GUEST</div></div><div><div></div><div>WALL MOUNTED SPEAKER/CLOCK COMBINATION</div></div><div><div></div><div>WALL CLOCK</div></div><div><div></div><div>CABLE TRAY</div></div><div><div></div><div>RECESSED AUDIO FLOOR BACK BOX, OUTLET AND CONDUIT</div></div><div><div></div><div>TELECOMMUNICATIONS SYSTEMS BONDING BUSBAR</div></div><div><div></div><div>FIBER OPTIC NETWORK CARD</div></div><div><div></div><div>AUDIO/VISUAL CONTROLLER AND INPUT DEVICE</div></div></div> <div><div>FIRE ALARM</div><div><div></div><div>ADDRESSABLE RELAY</div></div><div><div></div><div>ALARM, FIRE, COMMUNICATOR</div></div><div><div></div><div>ALARM, FIRE, PANEL; LETTERS INDICATE AS FOLLOWS: FACP = CENTRAL CONSOLE FACP = CONTROL PANEL MFACP= MASTER CONTROL PANEL FAAP = ANNUNCIATOR PANEL</div></div><div><div></div><div>ALARM, FIRE; LETTERS INDICATE AS FOLLOWS: BATT = BATTERIES CHR = CHARGER FAR = RECORDER</div></div><div><div></div><div>ALARM, FIRE, VALVE SUPERVISORY SWITCH.</div></div><div><div></div><div>ALARM, FIRE, TERMINAL CABINET.</div></div><div><div></div><div>ALARM, FIRE, POST INDICATOR VALVE.</div></div><div><div></div><div>ALARM, TRANSPONDER OR TRANSMITTER</div></div><div><div></div><div>ALARM, FIRE, MANUAL PULL STATION C = WITH CLEAR PLASTIC COVER</div></div><div><div></div><div>ALARM, HORN/LIGHT, ONE ASSEMBLY C = WITH CHIME</div></div><div><div></div><div>ALARM, HORN/LIGHT, SEPARATE ASSEMBLY</div></div><div><div></div><div>ALARM, LAMP LIGHT, SIGNAL LIGHT, STROBE</div></div><div><div></div><div>ALARM, MANUAL CONTROL</div></div><div><div></div><div>ALARM, MINI HORN</div></div><div><div></div><div>ALARM, SPRINKLER SYSTEM WATER FLOW BELL</div></div><div><div></div><div>ALARM, VOICE COMMUNICATION PANEL</div></div><div><div></div><div>ALARM, TAMPER SWITCH</div></div><div><div></div><div>DETECTION, GAS C = CARBON DIOXIDE TRANSMITTER</div></div><div><div></div><div>DETECTOR, FLOW SWITCH</div></div><div><div></div><div>DETECTOR, HEAT</div></div><div><div></div><div>DETECTOR, SMOKE</div></div><div><div></div><div>DETECTOR, SMOKE, FOR DUCT</div></div><div><div></div><div>ELECTROMAGNETIC TYPE DOOR HOLDER OUTLET</div></div><div><div></div><div>CITY FIRE ALARM MASTER STATION MTD 5'-6" AFF UNLESS NOTED.</div></div><div><div></div><div>FIRE ALARM TRANSMITTER (BASE LOOP) NUMERALS DENOTE CODE.</div></div><div><div></div><div>FIRE ALARM TROUBLE TRANSMITTER (BASE LOOP) NUMERALS DENOTE CODE.</div></div><div><div></div><div>FIRE SPRINKLER WATER FLOW SWITCH</div></div><div><div></div><div>KITCHEN HOOD FIRE SUPPRESSION SYSTEM</div></div><div><div></div><div>REMOTE ANNUNCIATOR</div></div></div> <div><div>CIRCUIT DESIGNATION</div><div>LUMINAIRE, TYPICAL: #E#NLa a X-X b X-X #E X-X</div><div>"#" INDICATES TYPE PER LUMINAIRE SCHEDULE. (SEE "LUMINAIRES" LEGEND ON THIS SHEET FOR MORE INFORMATION)</div><div>"NL" INDICATES NIGHT LIGHT LUMINAIRE.</div><div>"X-X" INDICATES PANELBOARD AND CIRCUIT PROVIDING POWER TO LUMINAIRES IN SAME ROOM/AREA, UON.</div><div>"a" INDICATES CONTROL PER SWITCH.</div><div>"E" INDICATES POWER TO EMERGENCY LIGHTING CONTAINED IN SAME ROOM/AREA.</div><div>RECEPTACLE, TYPICAL: "PNL" INDICATES POWER SOURCE.</div><div>"2" INDICATES CIRCUIT NUMBER.</div><div>PNL-2</div></div> <div><div>NURSE CALL</div><div><div></div><div>NURSE'S CALL MASTER STATION MTD ON NURSE'S COUNTER TOP UNLESS OTHERWISE NOTED</div></div><div><div></div><div>NURSE CALL TERMINAL CABINET</div></div><div><div></div><div>NURSE CALL STATION 1 = SINGLE PATIENT STATION. MTD 4'-0" AFF UNLESS OTHERWISE NOTED 2 = DUPLICATE PATIENT STATIONS (SEPARATE INDICATORS AT MASTER STATION) MTD 5'-0" AFF UNLESS OTHERWISE NOTED D = DUTY STATION. MTD 5'-0" AFF UNLESS OTHERWISE NOTED E = STATION MTD 6'-0" AFF FOR SHOWER LOCATION, MTD 4'-6" AFF FOR TUB LOCATION, & MTD 3'-0" AFF FOR TOILET LOCATION, UON P = PSYCHIATRIC CORRIDOR STATION WITH KEY SWITCH U = AUDIO VISUAL WALL STATION (STAFF) MTD 5'-0" AFF UNLESS OTHERWISE NOTED S = UTILITY CALL STATION, MTD 5'-0" AFF UNLESS OTHERWISE NOTED EM = EMERGENCY STATION, MTD 5'-0" AFF UNLESS OTHERWISE NOTED J = JACK STATION. MTD 4'-0" AFF UNLESS OTHERWISE NOTED</div></div><div><div></div><div>NURSE CALL LIGHT 2 = NURSE'S CALL DOME LIGHT (SUFFIX INDICATES No OF LAMP) D = CORRIDOR DOME LIGHT I = AUXILIARY INTERSECTIONAL DOME LIGHT</div></div><div><div></div><div>NIGHT LIGHT</div></div><div><div></div><div>PATIENT BED OUTLET</div></div><div><div></div><div>POWER SUPPLY WITH BATTERY BACKUP</div></div></div> <div><div>SAFETY AND SECURITY</div><div>M = MOUNTING FOR ALL SAFETY AND SECURITY SYMBOLS: C-CEILING D-DESK F-FLUSH H-HIDDEN M-MULLION P-PEDESTAL R-RACK S-SURFACE W-WALL</div><div><div></div><div>AUDIO DEVICE; LETTER INDICATES AS FOLLOWS: T=TECHNOLOGY/TYPE B-BELL C-CHIME H-HORN K-KLAXON L-LISTEN-IN M-MICROPHONE S-SOUNDER S-SPEAKER Z-BUZZER</div></div><div><div></div><div>KEYPAD DEVICE</div></div><div><div></div><div>CARD READER WITH KEYPAD</div></div><div><div></div><div>CARD ACCESS READER; LETTER INDICATES AS FOLLOWS: T=TECHNOLOGY/TYPE B-BARCODE F-ELEVATOR FLOOR CALL H-ELEVATOR HALL CALL M-MAG STRIP P-PROXIMITY S-SMART CARD T-TOKEN</div></div><div><div></div><div>DOOR CONTACT</div></div><div><div></div><div>ELECTRONIC LOCK; LETTER INDICATES AS FOLLOWS: T=TECHNOLOGY/TYPE D-DEADBOLT H-HYBRID L-LATCH SET M-MAGNETIC S-STRIKE</div></div><div><div></div><div>INTERCOM; LETTER INDICATES AS FOLLOWS: T=TECHNOLOGY/TYPE M-MASTER S-SUBSTATION</div></div><div><div></div><div>MOTION DETECTOR; LETTER INDICATES AS FOLLOWS: T=TECHNOLOGY/TYPE D-DUAL TECHNOLOGY IR-INFRARED M-MICROWAVE U-ULTRASONIC</div></div><div><div></div><div>PUSH BUTTON; LETTER INDICATES AS FOLLOWS: T=TECHNOLOGY/TYPE B-BELL PUSH D-DURESS P-PANIC R-DOOR OPENER X-REQUEST-FOR-EXIT</div></div><div><div></div><div>SECURITY ACCESS, ANNUNCIATOR PANEL</div></div><div><div></div><div>SECURITY ACCESS, CONTROL UNIT WITH CLOSED CIRCUIT TELEVISION CAMERA</div></div><div><div></div><div>SECURITY ACCESS, VIDEO CAMERA WITH LENS</div></div><div><div></div><div>SECURITY ACCESS, DOME CAMERA</div></div></div> <div><div>GENERAL SYMBOLS</div><div><div><div>SECTION LETTER</div><div>SCALE</div><div>SHEET WHERE SECTION IS TAKEN FROM</div></div><div><div></div><div>CONDUIT & WIRE TAG</div></div><div><div></div><div>VAULT, HANDHOLE, OR PULLBOX TAG</div></div><div><div></div><div>KEY NOTE</div></div></div><div><div><div>SECTION LETTER</div><div>SHEET ON WHICH SECTION APPEARS</div></div><div><div></div><div>FIGURE OR PHOTO DETAIL NUMBER</div></div><div><div></div><div>SHEET WHERE DETAIL IS TAKEN FROM</div></div><div><div><div>DETAIL NUMBER</div><div>DETAIL/PLAN NUMBER</div></div></div></div><div><div>E-001</div><div>GENERAL NOTES, ABBREVIATIONS AND LEGENDS</div></div><div><div>ES100</div><div>OVERALL SITE - ELECTRICAL PLAN</div></div><div><div>ES101</div><div>ENLARGED SITE - ELECTRICAL PLAN</div></div><div><div>EL101</div><div>LEVEL 1 - LIGHTING PLAN - EAST</div></div><div><div>EL101A</div><div>LEVEL 1 - LIGHTING PLAN - EAST (ADD ALT #3, #4)</div></div><div><div>EL102</div><div>LEVEL 1 - LIGHTING PLAN - CENTER</div></div><div><div>EL102A</div><div>LEVEL 1 - LIGHTING PLAN - CENTER (ADD ALT #3)</div></div><div><div>EL103</div><div>LEVEL 1 - LIGHTING PLAN - WEST</div></div><div><div>EL103A</div><div>LEVEL 1 - LIGHTING PLAN - WEST (ADD ALT #1)</div></div><div><div>EL104</div><div>ROOF AND MECHANICAL PENTHOUSE - LIGHTING PLANS</div></div><div><div>EP101</div><div>LEVEL 1 - POWER PLAN - EAST</div></div><div><div>EP101A</div><div>LEVEL 1 - POWER PLAN - EAST (ADD ALT #3, #4)</div></div><div><div>EP102</div><div>LEVEL 1 - POWER PLAN - CENTER</div></div><div><div>EP102A</div><div>LEVEL 1 - POWER PLAN - CENTER (ADD ALT #3)</div></div><div><div>EP103</div><div>LEVEL 1 - POWER PLAN - WEST</div></div><div><div>EP103A</div><div>LEVEL 1 - POWER PLAN - WEST (ADD ALT #1)</div></div><div><div>EP104</div><div>ROOF AND MECHANICAL PENTHOUSE - POWER PLANS</div></div><div><div>EP104A</div><div>ROOF AND MECHANICAL PENTHOUSE - POWER PLANS (ADD ALT #2)</div></div><div><div>ET101</div><div>LEVEL 1 - SPECIAL SYSTEM PLAN - EAST</div></div><div><div>ET101A</div><div>LEVEL 1 -</div></div></div>							



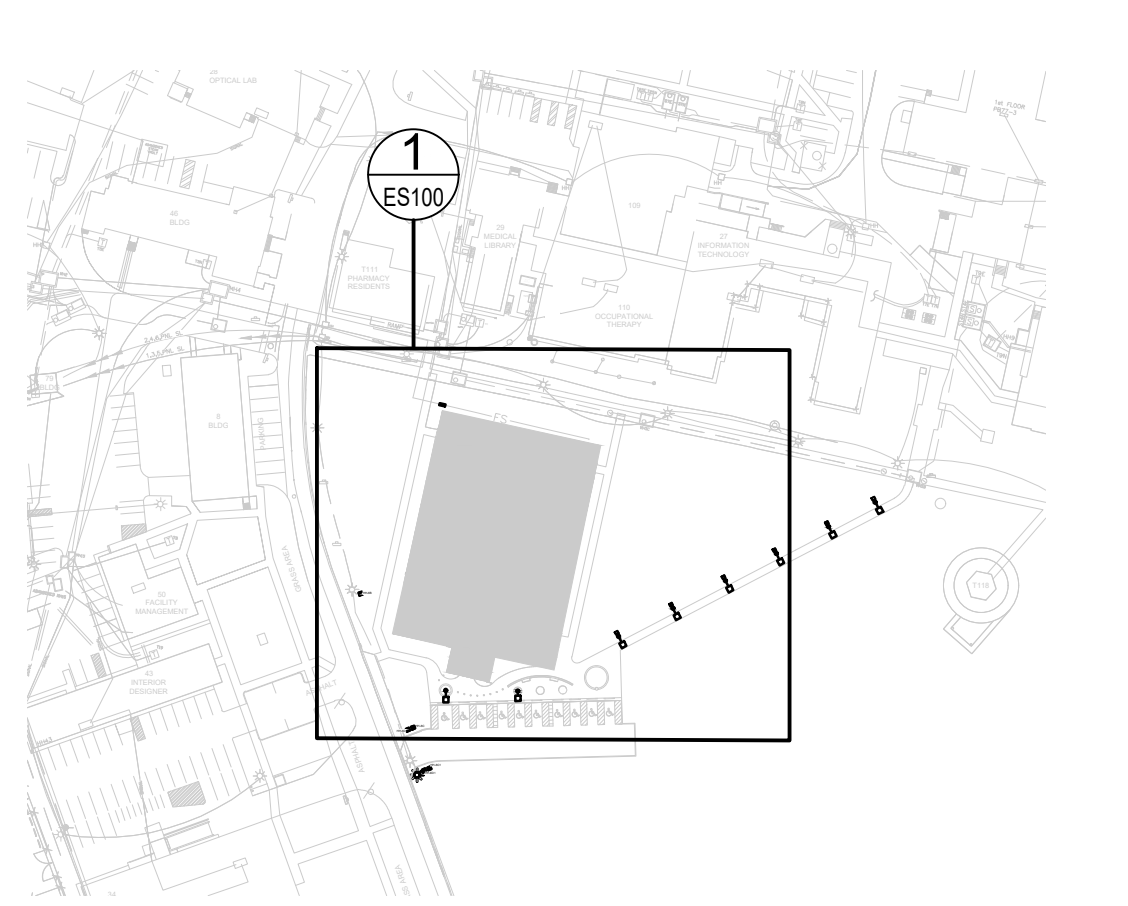
GENERAL SHEET NOTES

1. REFERENCE CONDUIT AND WIRE SCHEDULE ON SHEET E-603.

KEY NOTES (THIS SHEET ONLY)

- 1 EXISTING SWITCH "S2E", VAULT MOUNTED.
- 2 EXISTING SWITCH "S2N", VAULT MOUNTED.
- 3 EXISTING SIGNAL CONDUIT ROUTED THROUGH BUILDING 85 CRAWL SPACE.
- 4 EXISTING CONDUIT TO BE REUSED TO FEED FIBER OPTIC CABLE FROM MAIN SERVER ROOM IN BUILDING 67 TO NEW BUILDING 127. EXISTING CONDUIT ROUTING IS BASED ON SITE INVESTIGATION AND AS-BUILT DRAWINGS. CONTRACTOR SHALL FIELD VERIFY EXACT ROUTING AS REQUIRED.
- 5 EXISTING MAIN SERVER ROOM LOCATED IN BUILDING 67, ROOM G02B-67.
- 6 CONTRACTOR PARKING.
- 7 EXISTING CONDUIT TO BE REUSED TO FEED NEW POWER CABLE FROM EXISTING SWITCH THROUGH VAULT SYSTEM TO NEW BUILDING SERVICE EQUIPMENT.

KEY PLAN



1 OVERALL SITE - ELECTRICAL PLAN
1/32" = 1'-0"

--	--	--	--	--	--	--	--	--	--	--	--	--	--	--	--	--	--	--	--	--	--	--	--	--	--	--	--	--	--	--	--	--	--	--	--	--	--	--	--	--	--	--	--	--	--	--	--	--	--	--	--	--	--	--	--	--	--	--	--	--	--	--	--	--	--	--	--	--	--	--	--	--	--	--	--	--	--	--	--	--	--	--	--	--	--	--	--	--	--	--	--	--	--	--	--	--	--	--	--	--	--	--	--	--	--	--	--	--	--	--	--	--	--	--	--	--	--	--	--	--	--	--	--	--	--	--	--	--	--	--	--	--	--	--	--	--	--	--	--	--	--	--	--	--	--	--	--	--	--	--	--	--	--	--	--	--	--	--	--	--	--	--	--	--	--	--	--	--	--	--	--	--	--	--	--	--	--	--	--	--	--	--	--	--	--	--	--	--	--	--	--	--	--	--	--	--	--	--	--	--	--	--	--	--	--	--	--	--	--	--	--	--	--	--	--	--	--	--	--	--	--	--	--	--	--	--	--	--	--	--	--	--	--	--	--	--	--	--	--	--	--	--	--	--	--	--	--	--	--	--	--	--	--	--	--	--	--	--	--	--	--	--	--	--	--	--	--	--	--	--	--	--	--	--	--	--	--	--	--	--	--	--	--	--	--	--	--	--	--	--	--	--	--	--	--	--	--	--	--	--	--	--	--	--	--	--	--	--	--	--	--	--	--	--	--	--	--	--	--	--	--	--	--	--	--	--	--	--	--	--	--	--	--	--	--	--	--	--	--	--	--	--	--	--	--	--	--	--	--	--	--	--	--	--	--	--	--	--	--	--	--	--	--	--	--	--	--	--	--	--	--	--	--	--	--	--	--	--	--	--	--	--	--	--	--	--	--	--	--	--	--	--	--	--	--	--	--	--	--	--	--	--	--	--	--	--	--	--	--	--	--	--	--	--	--	--	--	--	--	--	--	--	--	--	--	--	--	--	--	--	--	--	--	--	--	--	--	--	--	--	--	--	--	--	--	--	--	--	--	--	--	--	--	--	--	--	--	--	--	--	--	--	--	--	--	--	--	--	--	--	--	--	--	--	--	--	--	--	--	--	--	--	--	--	--	--	--	--	--	--	--	--	--	--	--	--	--	--	--	--	--	--	--	--	--	--	--	--	--	--	--	--	--	--	--	--	--	--	--	--	--	--	--	--	--	--	--	--	--	--	--	--	--	--	--	--	--	--	--	--	--	--	--	--	--	--	--	--	--	--	--	--	--	--	--	--	--	--	--	--	--	--	--	--	--	--	--	--	--	--	--	--	--	--	--	--	--	--	--	--	--	--	--	--	--	--	--	--	--	--	--	--	--	--	--	--	--	--	--	--	--	--	--	--	--	--	--	--	--	--	--	--	--	--	--	--	--	--	--	--	--	--	--	--	--	--	--	--	--	--	--	--	--	--	--	--	--	--	--	--	--	--	--	--	--	--	--	--	--	--	--	--	--	--	--	--	--	--	--	--	--	--	--	--	--	--	--	--	--	--	--	--	--	--	--	--	--	--	--	--	--	--	--	--	--	--	--	--	--	--	--	--	--	--	--	--	--	--	--	--	--	--	--	--	--	--	--	--	--	--	--	--	--	--	--	--	--	--	--	--	--	--	--	--	--	--	--	--	--	--	--	--	--	--	--	--	--	--	--	--	--	--	--	--	--	--	--	--	--	--	--	--	--	--	--	--	--	--	--	--	--	--	--	--	--	--	--	--	--	--	--	--	--	--	--	--	--	--	--	--	--	--	--	--	--	--	--	--	--	--	--	--	--	--	--	--	--	--	--	--	--	--	--	--	--	--	--	--	--	--	--	--	--	--	--	--	--	--	--	--	--	--	--	--	--	--	--	--	--	--	--	--	--	--	--	--	--	--	--	--	--	--	--	--	--	--	--	--	--	--	--	--	--	--	--	--	--	--	--	--	--	--	--	--	--	--	--	--	--	--	--	--	--	--	--	--	--	--	--	--	--	--	--	--	--	--	--	--	--	--	--	--	--	--	--	--	--	--	--	--	--	--	--	--	--	--	--	--	--	--	--	--	--	--	--	--	--	--	--	--	--	--	--	--	--	--	--	--	--	--	--	--	--	--	--	--	--	--	--	--	--	--	--	--	--	--	--	--	--	--	--	--	--	--	--	--	--	--	--	--	--	--	--	--	--	--	--	--	--	--	--	--	--	--	--	--	--	--	--	--	--	--	--	--	--	--	--	--	--	--	--	--	--	--	--	--	--	--	--	--	--	--	--	--	--	--	--	--	--	--	--	--	--	--	--	--	--	--	--	--	--	--	--	--	--	--	--	--	--	--	--	--	--	--	--	--	--	--	--	--	--	--	--	--	--	--	--	--	--	--	--	--	--	--	--	--	--	--	--	--	--	--	--	--	--	--	--	--	--	--	--	--	--	--	--	--	--	--	--	--	--	--	--	--	--	--	--	--	--	--	--	--	--	--	--	--	--	--	--	--	--	--	--	--	--	--	--	--	--	--	--	--	--	--	--	--	--	--	--	--	--	--	--	--	--	--	--	--	--	--	--	--	--	--	--	--	--	--	--	--	--	--	--	--	--	--	--	--	--	--	--	--	--	--	--	--	--	--	--	--	--	--	--	--	--	--	--	--	--	--	--	--	--	--	--	--	--	--	--	--	--	--	--	--	--	--	--	--	--	--	--	--	--	--	--	--	--	--	--	--	--	--	--	--	--	--	--	--	--	--	--	--	--	--	--	--	--	--	--	--	--	--	--	--	--	--	--	--	--	--	--	--	--	--	--	--	--	--	--	--	--	--	--	--	--	--	--	--	--	--	--	--	--	--	--	--	--	--	--	--	--	--	--	--	--	--	--	--	--	--	--	--	--	--	--	--	--	--	--	--	--	--	--	--	--	--	--	--	--	--	--	--	--	--	--	--	--	--	--	--	--	--	--	--	--	--	--	--	--	--	--	--	--	--	--	--	--	--	--	--	--	--	--	--	--	--	--	--	--	--	--	--	--	--	--	--	--	--	--	--	--	--	--	--	--	--	--	--	--	--	--	--	--	--	--	--	--	--	--	--	--	--	--	--	--	--	--	--	--	--	--	--	--	--	--	--	--	--	--	--	--	--	--	--	--	--	--	--	--	--	--	--	--	--	--	--	--	--	--	--	--	--	--	--	--	--	--	--	--	--	--	--	--	--	--	--	--	--	--	--	--	--	--	--	--	--	--	--	--	--	--	--	--	--	--	--	--	--	--	--	--	--	--	--	--	--	--	--	--	--	--	--	--	--	--	--	--	--	--	--	--	--	--	--	--	--	--	--	--	--	--	--	--	--	--	--	--	--	--	--	--	--	--	--	--	--	--	--	--	--	--	--	--	--	--	--	--	--	--	--	--	--	--	--	--	--	--	--	--	--	--	--	--	--	--	--	--	--	--	--	--	--	--	--	--	--	--	--	--	--	--	--	--	--	--	--	--	--	--	--	--	--	--	--	--	--	--	--	--	--	--	--	--	--	--	--	--	--	--	--	--	--	--	--	--	--	--	--	--	--	--	--	--	--	--	--	--	--	--	--	--	--	--	--	--	--	--	--	--	--	--	--	--	--	--	--	--	--	--	--	--	--	--	--	--	--	--	--	--	--	--	--	--	--	--	--	--	--	--	--	--	--	--	--	--	--	--	--	--	--	--	--	--	--	--	--	--	--	--	--	--	--	--	--	--	--	--	--	--	--	--	--	--	--	--	--	--	--	--	--	--	--	--	--	--	--	--	--	--	--	--	--	--	--	--	--	--	--	--

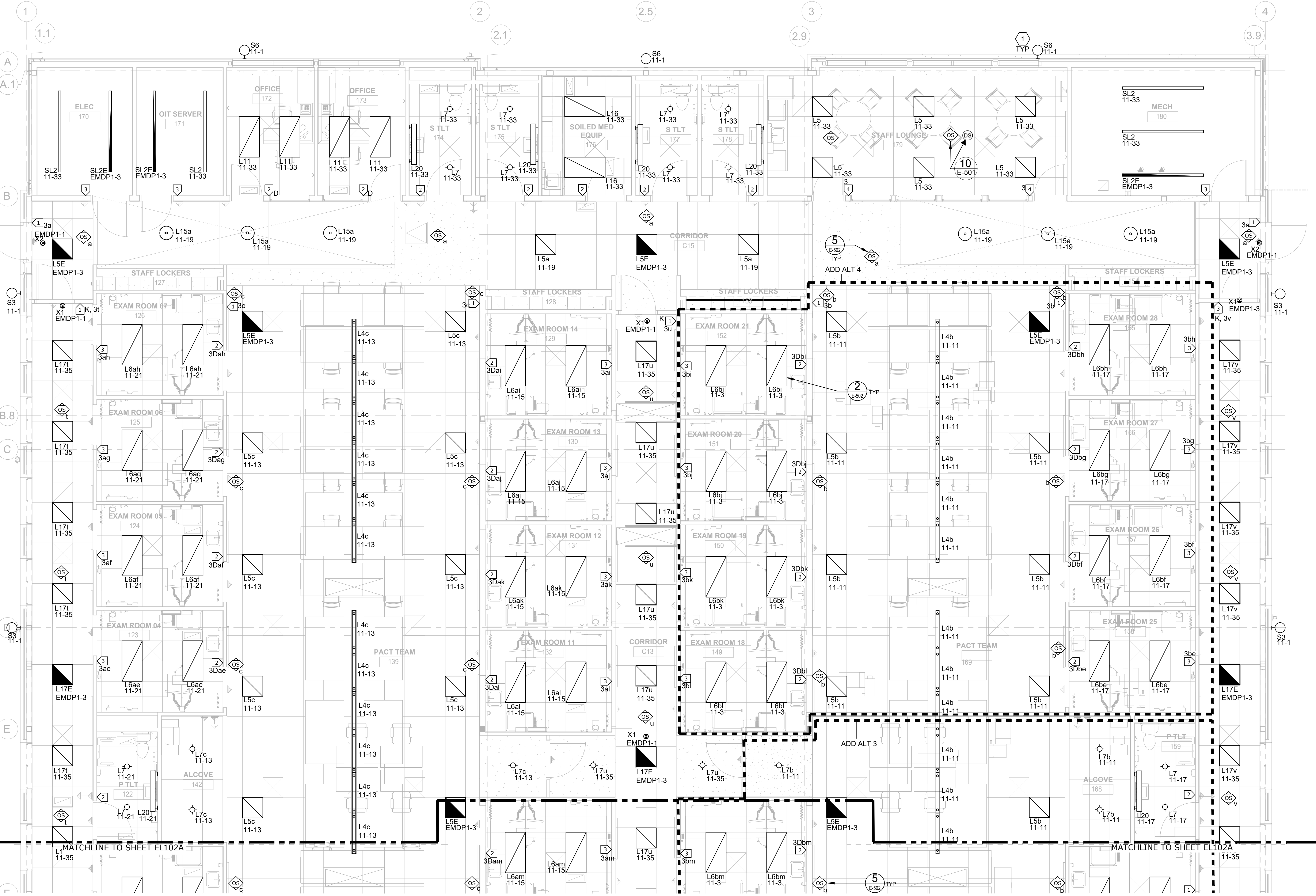
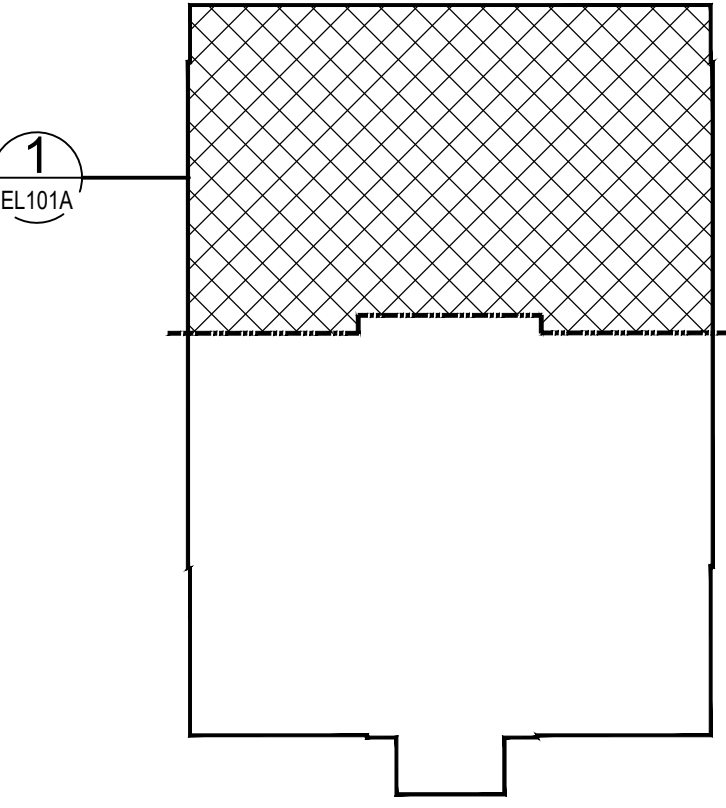
GENERAL SHEET NOTES

- COORDINATE ALL LIGHTING INSTALLATIONS WITH ALL OBSTRUCTIONS AND EQUIPMENT INCLUDING, BUT NOT LIMITED TO, ARCHITECTURAL FEATURES, MECHANICAL EQUIPMENT, AND MEDICAL EQUIPMENT.
- EMERGENCY FIXTURES DENOTED BY 'E' SHALL PROVIDE 24-HR OPERATION AND SHALL HAVE CONSTANT HOT UNSWITCHED CIRCUIT.



KEY NOTES (THIS SHEET ONLY)

- ALL BUILDING MOUNTED EXTERIOR LIGHTING IS CONTROLLED VIA (1) PHOTOCELL MOUNTED ON THE ROOF AND LIGHTING CONTACTOR LOCATED IN ELECTRICAL ROOM. REFERENCE SHEETS EL104 AND E-401A, RESPECTIVELY, FOR ADDITIONAL INFORMATION.

KEY PLAN



1 LEVEL 1 - LIGHTING PLAN - EAST (ADD ALT #3, #4)
1/4" = 1'-0"

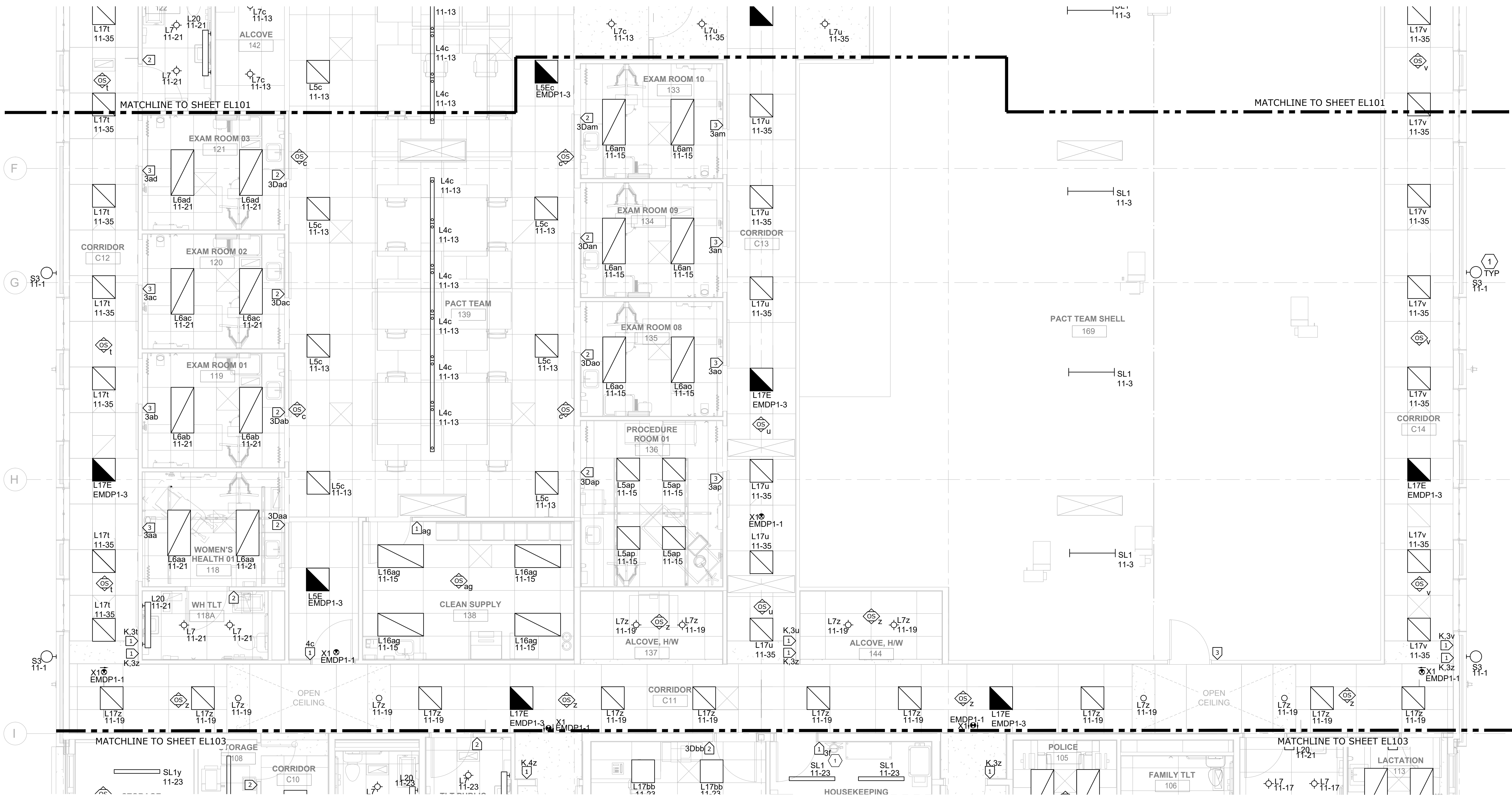
		CONSULTANT	ARCHITECT/ENGINEER OF RECORD A/E: SPEES DESIGN BUILD 625 1ST AVE #301 SEATTLE, WA, 98014 (206) 590 - 2118 RAY SPEES, PRESIDENT	STAMP 	Office of Construction and Facilities Management  U.S. Department of Veterans Affairs	Drawing Title LEVEL 1 - LIGHTING PLAN - EAST (ADD ALT #3, #4)	Phase CONSTRUCTION DOCUMENTS	Project Title CONSTRUCT PRIMARY CARE / MENTAL HEALTH BUILDING	Project Number 531-325					
						Approved: Project Director				Location BOISE VA MEDICAL CENTER - BOISE, ID	Drawing Number EL101A			
						Approved: CHIEF, FACILITY MANAGEMENT SERVICE						Issue Date 07/23/2021	Checked LRL/BJR	Drawn JPS/FEB
Revisions:	Date:								164 OF 206					

GENERAL SHEET NOTES

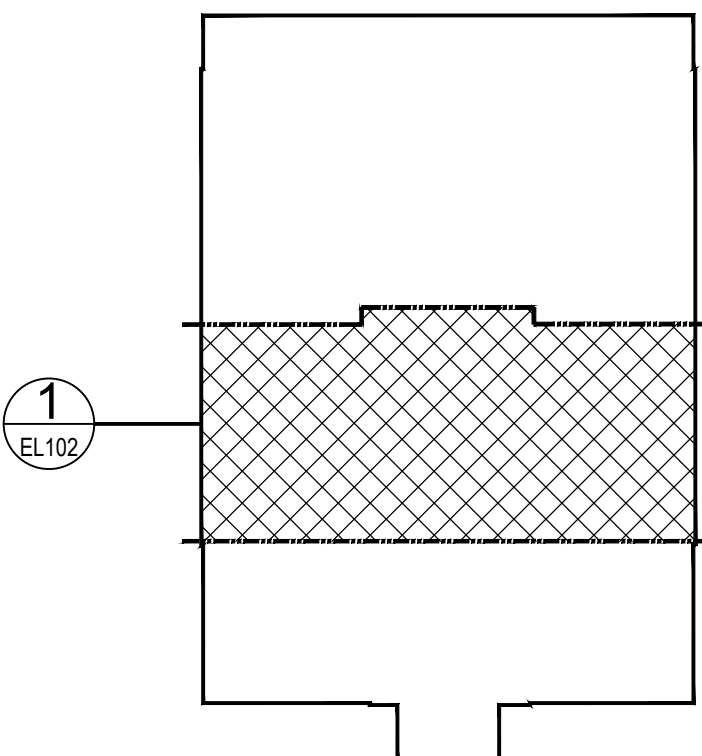
1. COORDINATE ALL LIGHTING INSTALLATIONS WITH ALL OBSTRUCTIONS AND EQUIPMENT INCLUDING, BUT NOT LIMITED TO, ARCHITECTURAL FEATURES, MECHANICAL EQUIPMENT, AND MEDICAL EQUIPMENT.
2. EMERGENCY FIXTURES DENOTED BY 'E' SHALL PROVIDE 24-HR OPERATION AND SHALL HAVE CONSTANT HOT UNSWITCHED CIRCUIT.

KEY NOTES (THIS SHEET ONLY)




- 1 ALL BUILDING MOUNTED EXTERIOR LIGHTING IS CONTROLLED VIA (1) PHOTOCELL MOUNTED ON THE ROOF AND LIGHTING CONTACTOR LOCATED IN ELECTRICAL ROOM. REFERENCE SHEETS EL104 AND E-401, RESPECTIVELY, FOR ADDITIONAL INFORMATION.



KEY PLAN



LEVEL 1 - LIGHTING PLAN - CENTER

		CONSULTANT		ARCHITECT/ENGINEER OF RECORD		STAMP		Office of Construction and Facilities Management		Drawing Title LEVEL 1 - LIGHTING PLAN - CENTER		Phase CONSTRUCTION DOCUMENTS		Project Title CONSTRUCT PRIMARY CARE / MENTAL HEALTH BUILDING		Project Number 531-325	
				A/E: SPEES DESIGN BUILD 625 1ST AVE #301 SEATTLE, WA, 98014 (206) 590 - 2118 RAY SPEES, PRESIDENT						Approved: MEDICAL CENTER DIRECTOR				Location BOISE VA MEDICAL CENTER - BOISE, ID		Building Number 127	
								 U.S. Department of Veterans Affairs		Approved: CHIEF, FACILITY MANAGEMENT SERVICE				Issue Date 07/23/2021		Checked LRL / BJR	
Revisions:		Date:												Drawn JPS / FEB		EL102 165 OF 206	

GENERAL SHEET NOTES

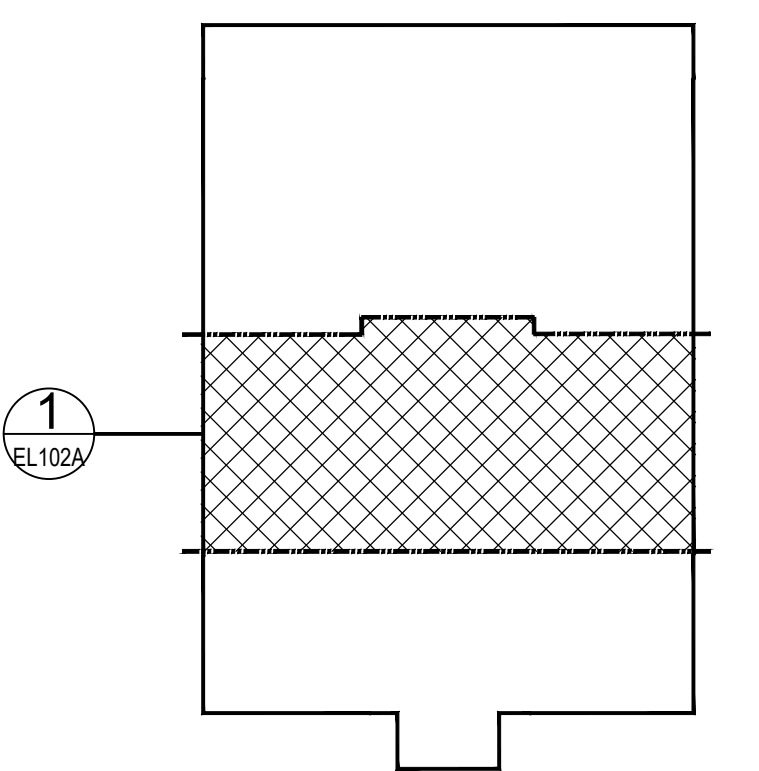
1. COORDINATE ALL LIGHTING INSTALLATIONS WITH ALL OBSTRUCTIONS AND EQUIPMENT INCLUDING, BUT NOT LIMITED TO, ARCHITECTURAL FEATURES, MECHANICAL EQUIPMENT, AND MEDICAL EQUIPMENT.
2. EMERGENCY FIXTURES DENOTED BY 'E' SHALL PROVIDE 24-HR OPERATION AND SHALL HAVE CONSTANT HOT UNSWITCHED CIRCUIT.

KEY NOTES (THIS SHEET ONLY)

- 1 ALL BUILDING MOUNTED EXTERIOR LIGHTING IS CONTROLLED VIA (1) PHOTOCCELL MOUNTED ON THE ROOF AND LIGHTING CONTACTOR LOCATED IN ELECTRICAL ROOM. REFERENCE SHEETS EL104 AND E-401A, RESPECTIVELY, FOR ADDITIONAL INFORMATION.



KEY PLAN



1 LEVEL 1 - LIGHTING PLAN - CENTER (ADD ALT #3)

[illegible]

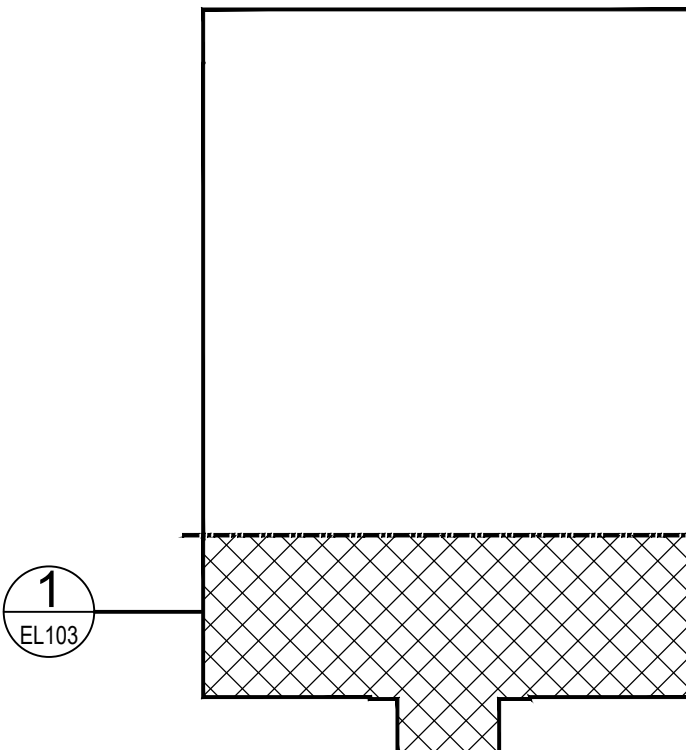
GENERAL SHEET NOTES

- COORDINATE ALL LIGHTING INSTALLATIONS WITH ALL OBSTRUCTIONS AND EQUIPMENT INCLUDING, BUT NOT LIMITED TO, ARCHITECTURAL FEATURES, MECHANICAL EQUIPMENT, AND MEDICAL EQUIPMENT.
- EMERGENCY FIXTURES DENOTED BY AN 'E' SHALL PROVIDE 24-HR OPERATION AND SHALL HAVE CONSTANT HOT UNSWITCHED CIRCUIT.

KEY NOTES (THIS SHEET ONLY)

- 3-WAY SWITCH TIED TO SWITCH AT TOP OF MECHANICAL PENTHOUSE STAIRS.
- CONTRACTOR SHALL VERIFY MOUNTING HEIGHT WITH ARCHITECT.
- ALL BUILDING MOUNTED EXTERIOR LIGHTING IS CONTROLLED VIA (1) PHOTOCELL MOUNTED ON THE ROOF AND LIGHTING CONTACTOR LOCATED IN ELECTRICAL ROOM. REFERENCE SHEETS EL104 AND E-401, RESPECTIVELY, FOR ADDITIONAL INFORMATION.

KEY PLAN



1 LEVEL 1 - LIGHTING PLAN - WEST
1/4" = 1'-0"

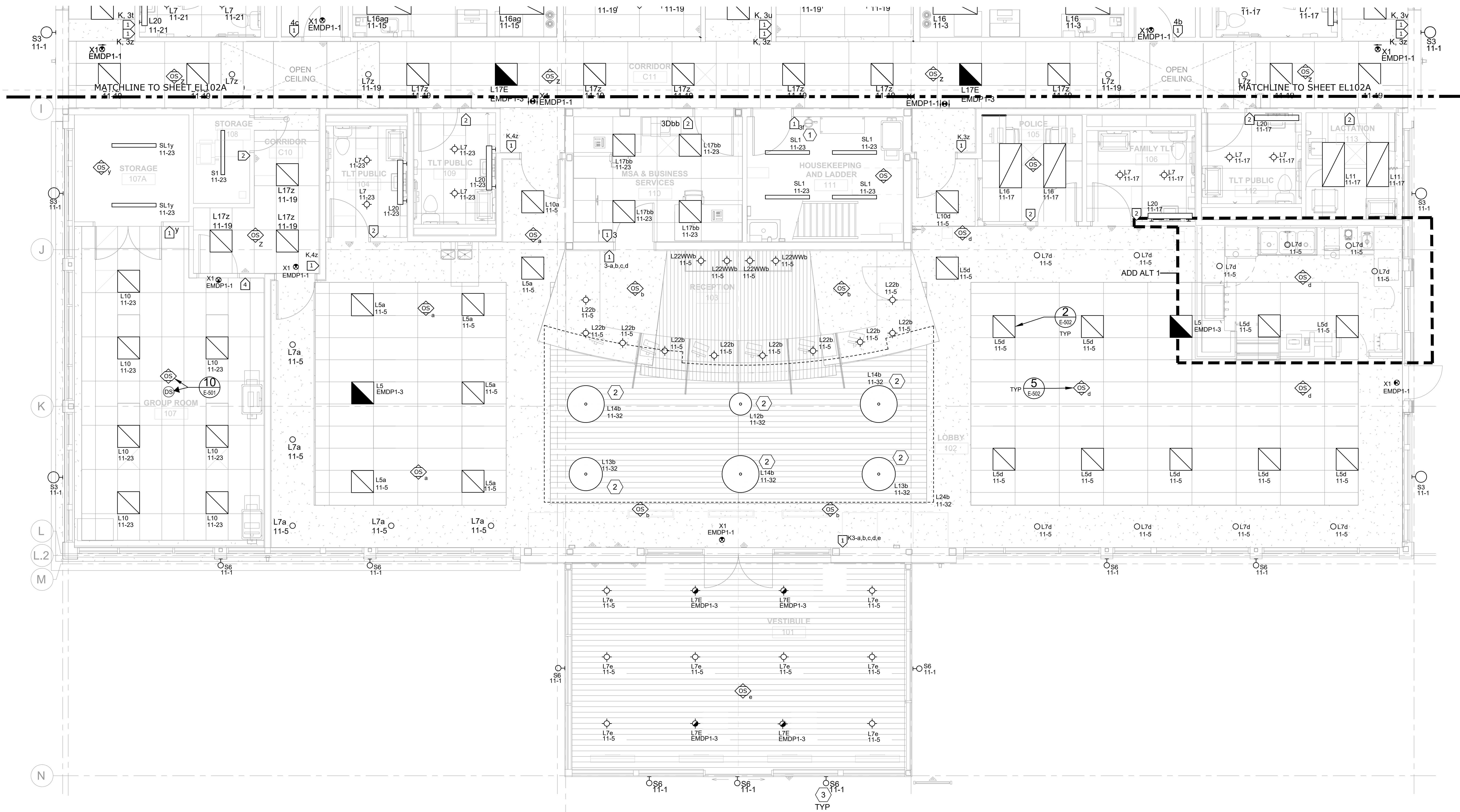
		CONSULTANT	ARCHITECT/ENGINEER OF RECORD	STAMP	Office of Construction and Facilities Management	Drawing Title LEVEL 1 - LIGHTING PLAN - WEST	Phase CONSTRUCTION DOCUMENTS	Project Title CONSTRUCT PRIMARY CARE / MENTAL HEALTH BUILDING	Project Number 531-325
			A/E: SPEES DESIGN BUILD 625 1ST AVE #301 SEATTLE, WA, 98014 (206) 590 - 2118 RAY SPEES, PRESIDENT			Approved: Project Director		Location BOISE VA MEDICAL CENTER - BOISE, ID	Building Number 127
Revisions:						Approved: CHIEF, FACILITY MANAGEMENT SERVICE		Issue Date 07/23/2021	Drawing Number EL103
		Date:						Checked LRL/BJR	167 OF 206
								Drawn JPS/FEB	

GENERAL SHEET NOTES

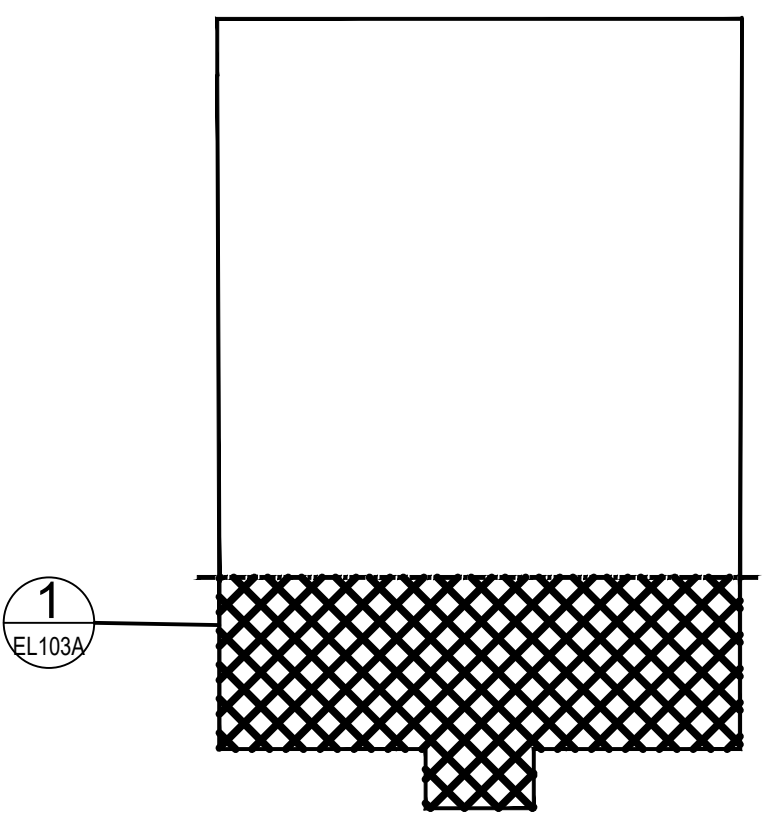
1. COORDINATE ALL LIGHTING INSTALLATIONS WITH ALL OBSTRUCTIONS AND EQUIPMENT INCLUDING, BUT NOT LIMITED TO, ARCHITECTURAL FEATURES, MECHANICAL EQUIPMENT, AND MEDICAL EQUIPMENT.
2. EMERGENCY FIXTURES DENOTED BY AN 'E' SHALL PROVIDE 24-HR OPERATION AND SHALL HAVE CONSTANT HOT UNSWITCHED CIRCUIT.

KEY NOTES (THIS SHEET ONLY)

- 1 3-WAY SWITCH TIED TO SWITCH AT TOP OF MECHANICAL PENTHOUSE STAIRS.
- 2 CONTRACTOR SHALL VERIFY MOUNTING HEIGHT WITH ARCHITECT.
- 3 ALL BUILDING MOUNTED EXTERIOR LIGHTING IS CONTROLLED VIA (1) PHOTOCELL MOUNTED ON THE ROOF AND LIGHTING CONTROL LOCATED IN ELECTRICAL ROOM. REFERENCE SHEETS EL 104 AND E-401A, RESPECTIVELY, FOR ADDITIONAL INFORMATION.



KEY PLAN



1 LEVEL 1 - LIGHTING PLAN - WEST (ADD ALT #1) 1/4" = 1'-0" 0 2' 4' 8' PROJECT NORTH

		CONSULTANT	ARCHITECT/ENGINEER OF RECORD	STAMP	Drawing Title LEVEL 1 - LIGHTING PLAN - WEST (ADD ALT #1)	Phase CONSTRUCTION DOCUMENTS	Project Title CONSTRUCT PRIMARY CARE / MENTAL HEALTH BUILDING	Project Number 531-325
			A/E: SPEES DESIGN BUILD 625 1ST AVE #301 SEATTLE, WA, 98014 (206) 590 - 2118 RAY SPEES, PRESIDENT		Approved: Project Director		Location BOISE VA MEDICAL CENTER - BOISE, ID	Building Number 127
				U.S. Department of Veterans Affairs	Approved: CHIEF, FACILITY MANAGEMENT SERVICE		Issue Date 07/23/2021	Drawing Number EL103A
							Checked LRL/BJR	168 OF 206
Revisions:	Date:						Drawn JPS/FEB	

