

U.S. COAST GUARD  
CIVIL ENGINEERING

[illegible]

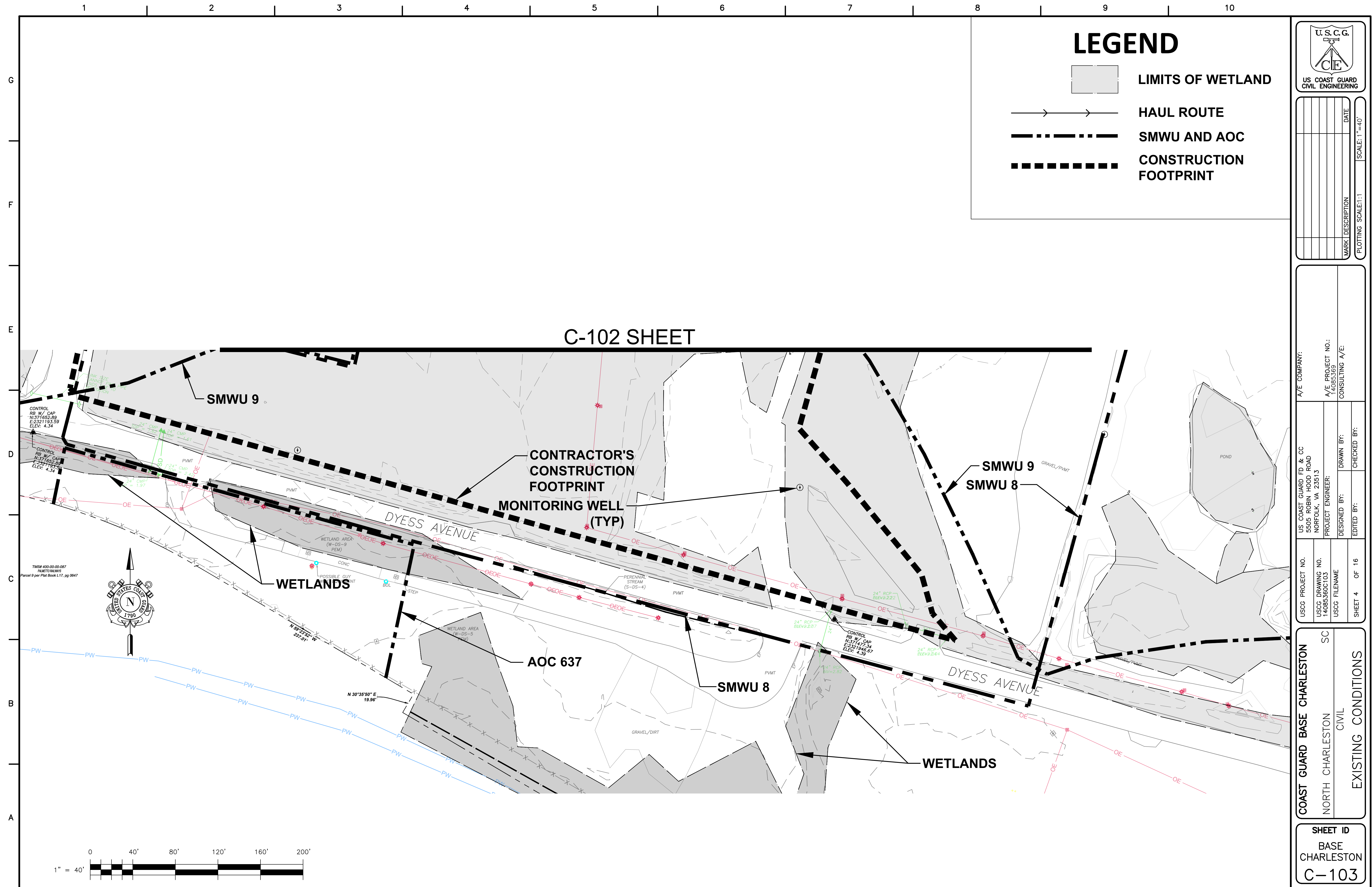
A/E COMPANY:	
A/E PROJECT NO.:	
14085369	
CONSULTING A/E:	

USCG PROJECT NO.	US COAST GUARD HD & CC 5505 ROBIN HOOD ROAD NORFOLK, VA 23513
USCG DRAWING NO.	PROJECT ENGINEER:
14085360C102	
USCG FILENAME	DESIGNED BY:
	DRAWN BY:
	EDITED BY:
	CHECKED BY:
SHEET 3 OF 16	

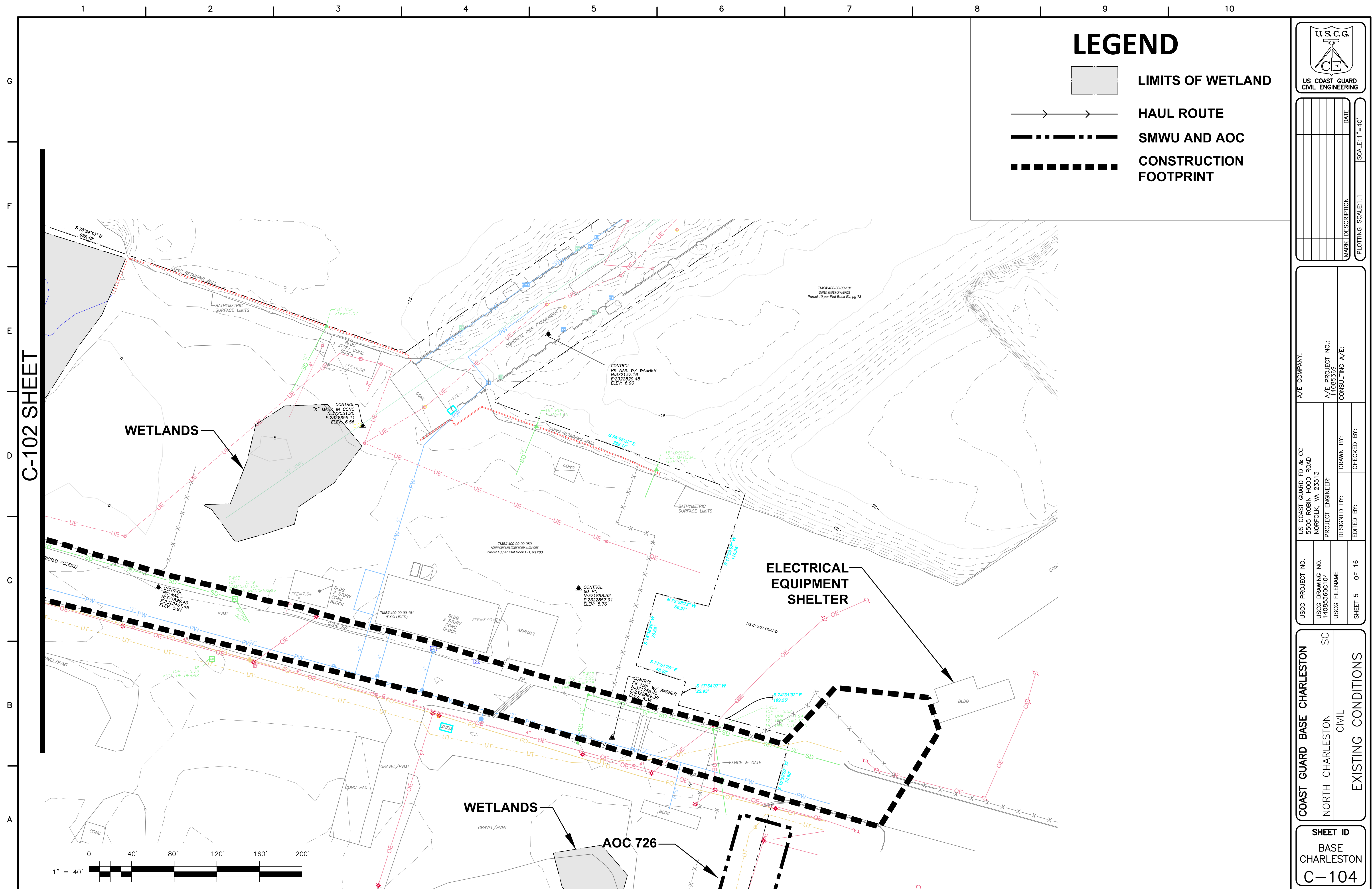
<b>COAST GUARD BASE CHARLESTON</b>	
NORTH CHARLESTON	SC
CIVIL	
EXISTING CONDITIONS	

SHEET ID  
BASE  
CHARLESTON  
C-102





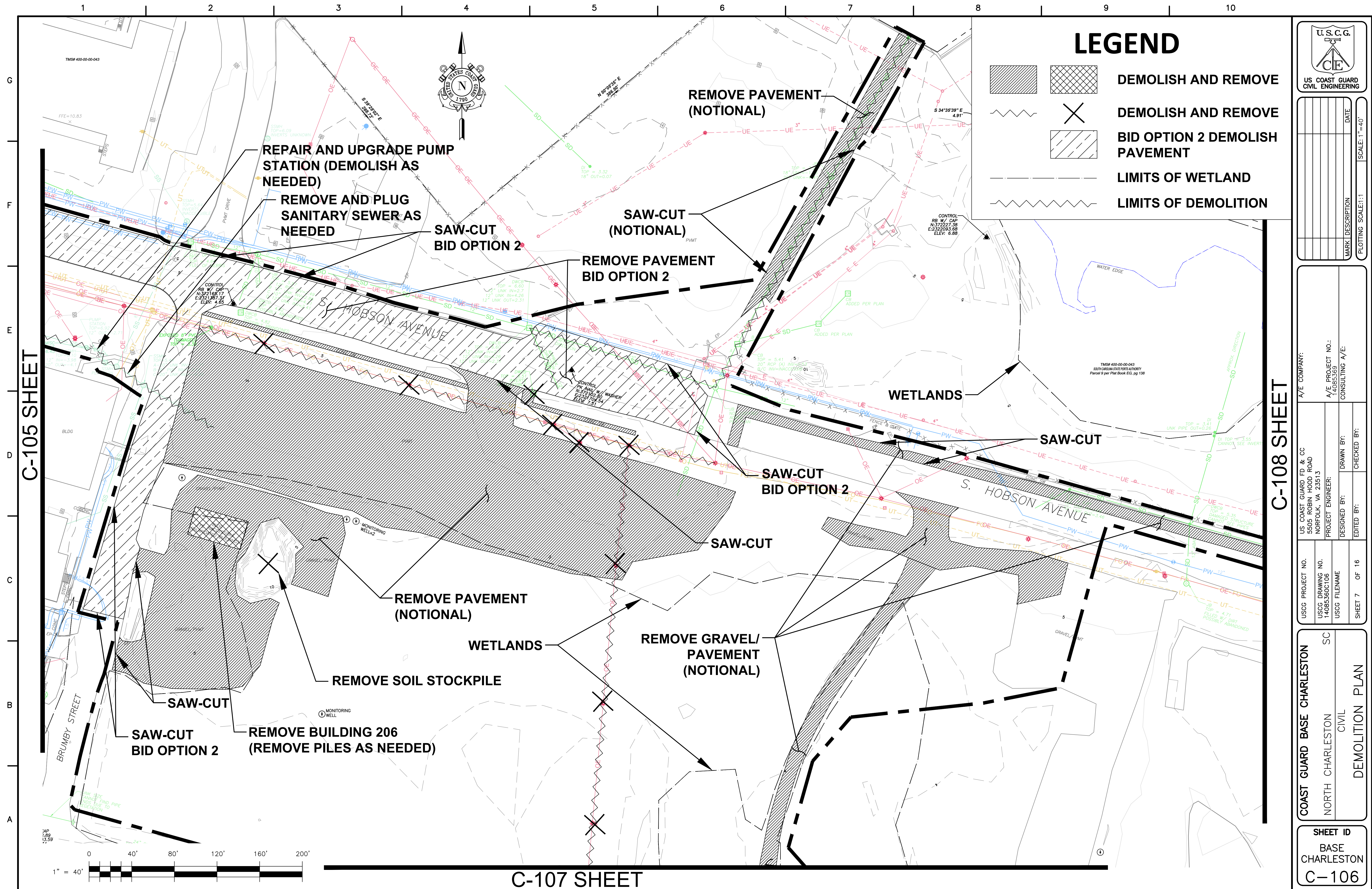




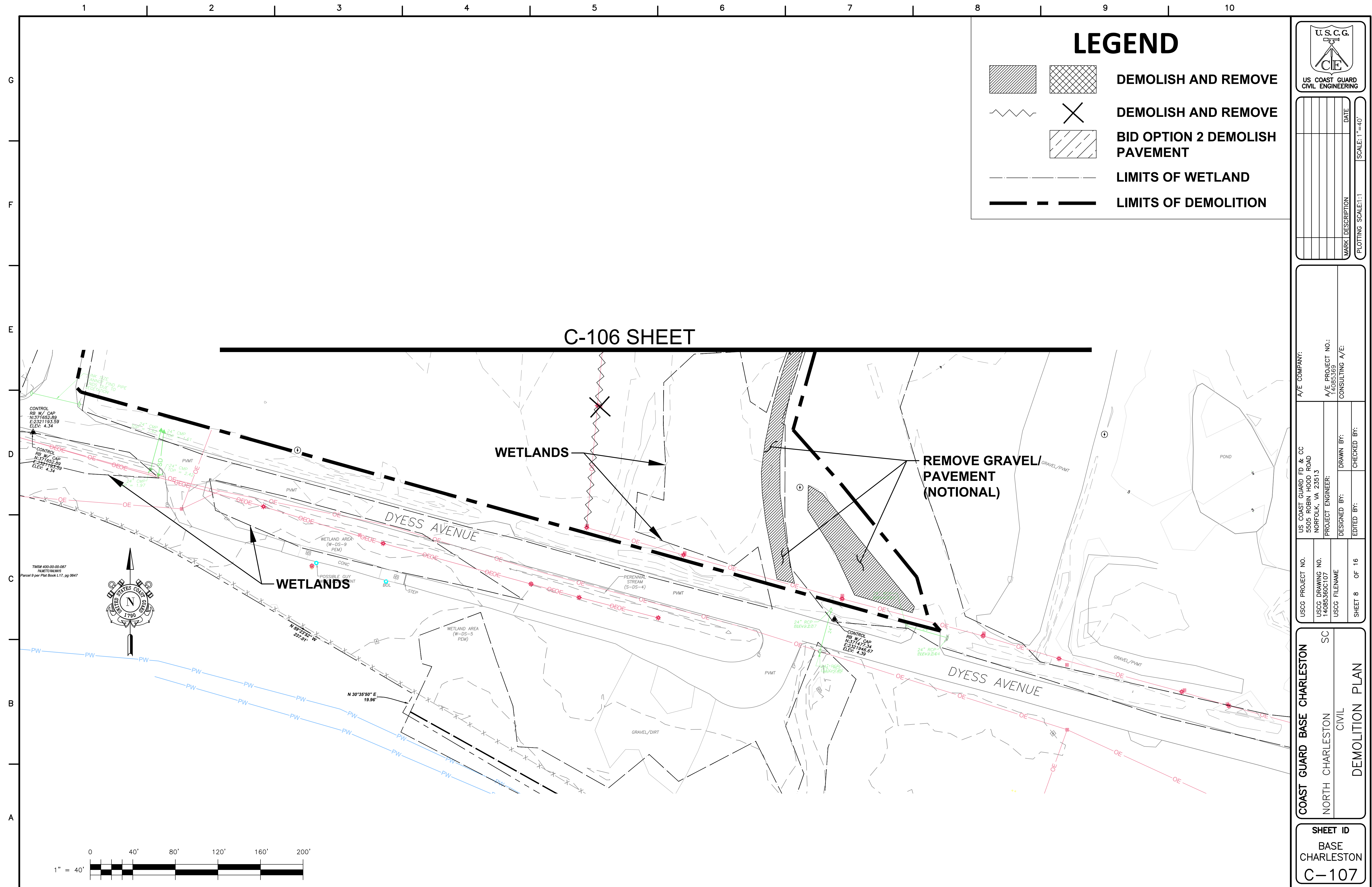




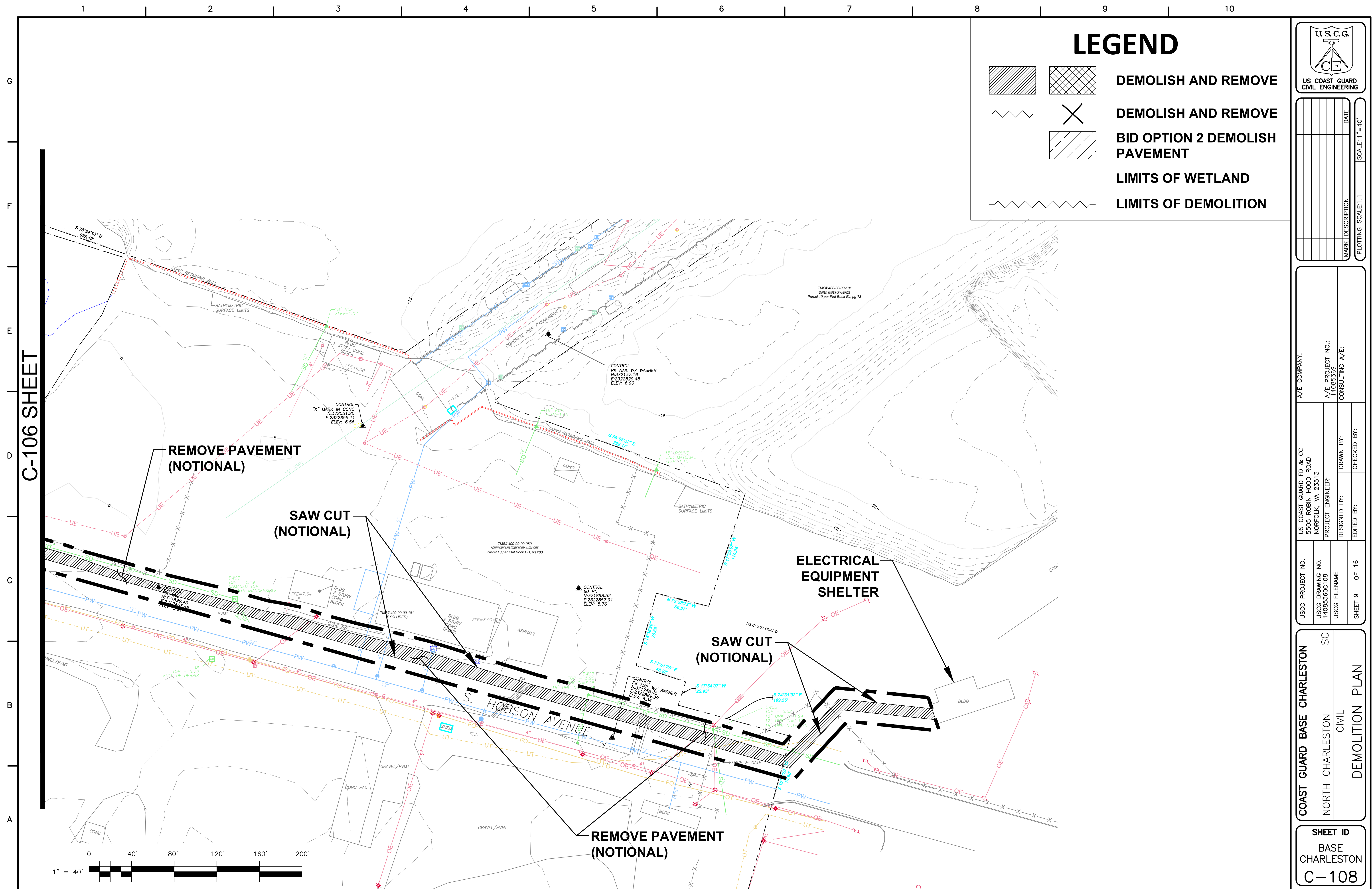




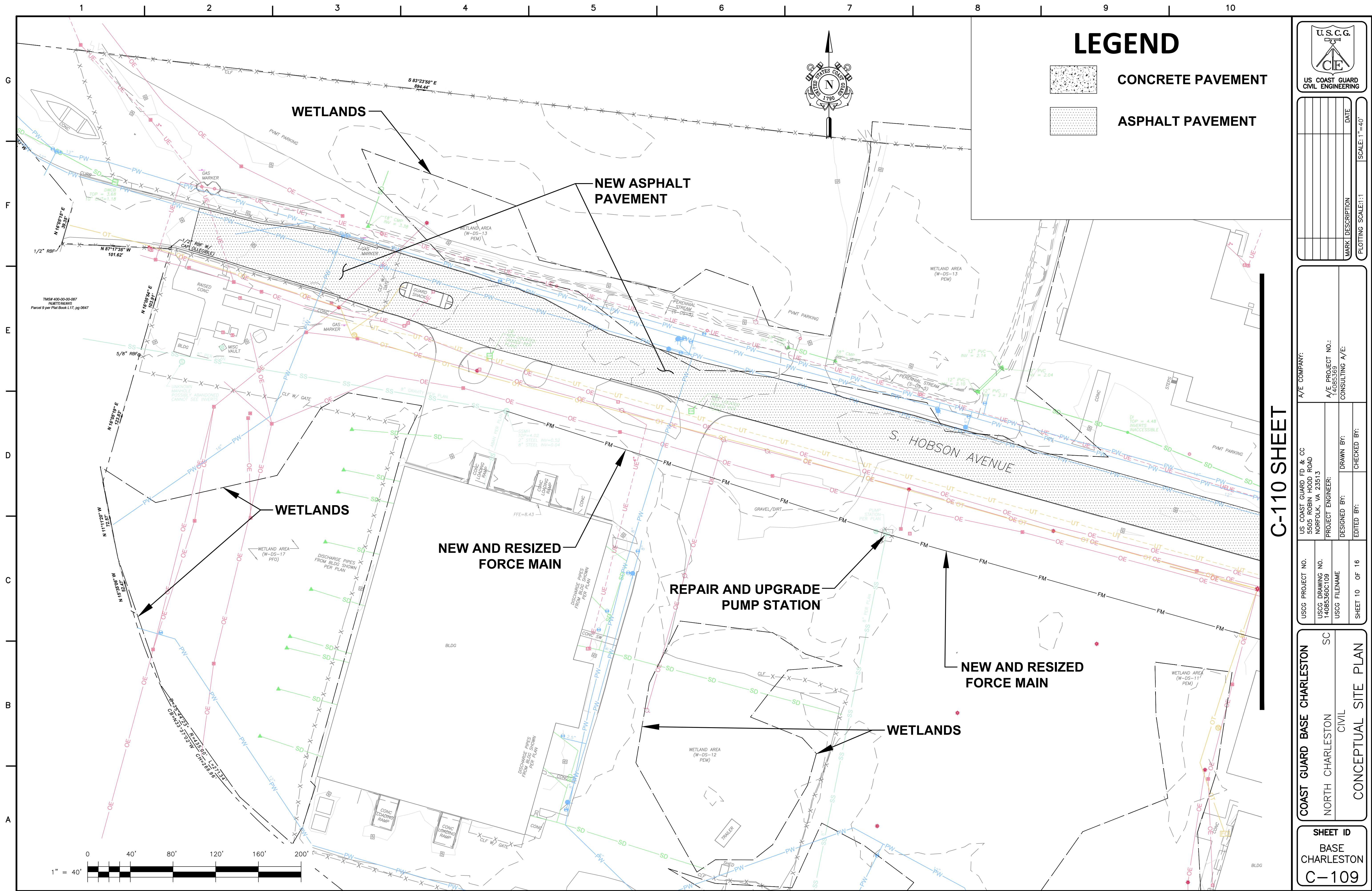


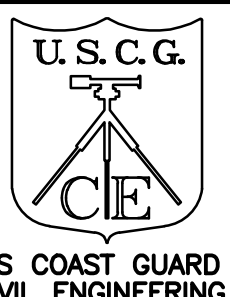












US COAST GUARD  
CIVIL ENGINEERING

DATE	MARK	DESCRIPTION

PLOTTING SCALE: 1"=40'

A/E COMPANY:

US COAST GUARD FD & CC  
5505 ROBIN HOOD ROAD  
NORFOLK, VA 23513

USCG PROJECT NO.

USCG DRAWING NO.

USCG FILENAME

A/E PROJECT NO.:

14085360C109

CONSULTING A/E:

DESIGNED BY:

EDITED BY:

DRAWN BY:

CHECKED BY:

COAST GUARD BASE CHARLESTON

NORTH CHARLESTON

CIVIL

SC

CONCEPTUAL SITE PLAN

SHEET ID

BASE CHARLESTON

C-109







