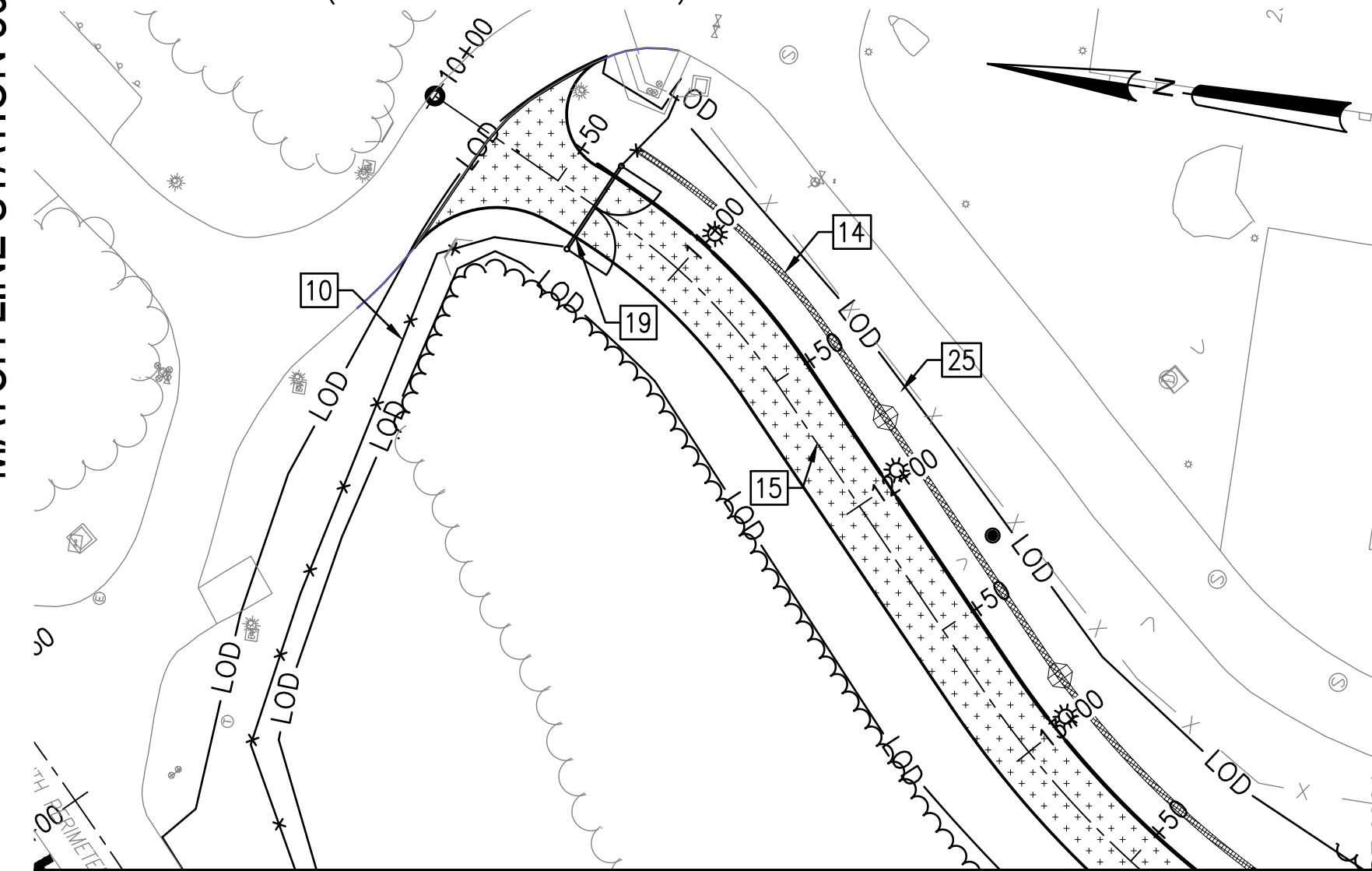


KEY NOTES

- 1 AIRFIELD CONCRETE PAVEMENT (SEE SECTION A1 ON CP-501)
- 2 AIRFIELD ASPHALT PAVEMENT (SEE SECTION A1 ON CP-501)
- 3 TAXIWAY CENTERLINE BASELINE 'A'
- 4 CONCRETE JOINTS (SEE CP-101 TO CP-104)
- 5 DOUBLE BOX FRAME ROLLER GATE (C1 CS-503)
- 6 GATE OPERATOR (C3 CS-503)
- 7 ROLLER GATE FOOTING WITH RAILS (A1 CS-503)
- 8 GRADE CROSSING ACTIVE CONTROL DEVICE (C1 CT-502)
- 9 TWO 20' SWING MOTORIZED GATES (A3 CS-503)
- 10 AIRFIELD PERIMETER FENCE FE-7 WITH DOUBLE CABLE BARRIER (SEE SHEET CS-502, CS-503, & C-504)
- 11 MD SHA ST'D. 645.01 CONCRETE MEDIAN TYPE A-1 (C5 CS-503)
- 12 SOUTH PERIMETER ROAD BASELINE 'B'
- 13 FLASHING BEACON (C4 CT-502)
- 14 BIO-SWALE (A4 CU-505)
- 15 HCP ACCESS ROAD BASELINE 'C'
- 16 HCP ACCESS ROAD BASELINE 'D'
- 17 UNDERGROUND DETENTION SYSTEM (SEE SHEET CU-504)
- 18 BIO-SWALE EARTH BERM (B5 CU-505)
- 19 42-FOOT SWING GATE (SEE SHEET CS-502)
- 20 CONNECT TO EXISTING AIRFIELD SECURITY FENCE
- 21 GATE CONTROLLER (REFER TO ELECTRICAL SHEET E-102)
- 22 AIRFIELD LIGHT (REFER TO ELECTRICAL SHEET E-102)
- 23 ELECTRICAL PANEL (REFER TO ELECTRICAL SHEET E-103)
- 24 ELECTRICAL TRANSFORMER (REFER TO ELECTRICAL SHEET E-103)
- 25 ROADWAY LIGHT (REFER TO ELECTRICAL SHEET E-103)
- 26 NORTH TAXIWAY GATE BASELINE 'G'
- 27 SOUTH TAXIWAY GATE BASELINE 'H'
- 28 GUARDRAIL (REFER TO SHEET CS-505)
- 29 TRAFFIC BARRIER, TYPE C (SEE SHEET CS-505)
- 30 TRAFFIC BARRIER, TYPE K (SEE SHEET CS-505)

LEGEND

- AIRFIELD CONCRETE PAVEMENT (SEE SECTION A1 ON CP-501)
- AIRFIELD ASPHALT PAVEMENT (SEE SECTION A1 ON CP-501)
- ASPHALT ROAD PAVEMENT (SEE SECTIONS CS-301)
- BIOSWALE FILTER MEDIA



GENERAL NOTES:

- 1. REFER TO SHEET GI-003 FOR LEGEND AND GENERAL NOTES.
- 2. REFER TO SHEETS CS-201 TO CS-204 FOR TAXIWAY AND SOUTH PERIMETER ROAD PROFILES.
- 3. REFER TO SHEET CS-205 FOR TAXIWAY GATE PROFILES.
- 4. REFER TO SHEET CS-301 FOR SITE TYPICAL SECTIONS
- 5. REFER TO SHEETS CS-501 TO CS-502 FOR SITE DETAILS

APPROVED	DATE	APPR
FOR COMMANDER NAVFAC	09/15/2023	
ACTIVITY	09/15/2023	
SATISFACTORY TO	09/15/2023	
DES	09/15/2023	
BRANCH MANAGER	09/15/2023	
CHIEF ENGINEER	09/15/2023	
FIRE PROTECTION	09/15/2023	
DEPARTMENT OF THE NAVY	09/15/2023	
NAVAL FACILITIES ENGINEERING COMMAND	09/15/2023	
WASHINGTON NAVY YARD	09/15/2023	
JOINT BASE ANDREWS NAVAL AIR FACILITY	09/15/2023	
CAMP SPRINGS, MD	09/15/2023	
P-3002 RELOCATE HAZARDOUS CARGO	09/15/2023	
PAD AND EOD PROFICIENCY RANGE	09/15/2023	
SITE LAYOUT PLAN	09/15/2023	
SCALE: AS NOTED	09/15/2023	
PROJECT NO.: 1396550	09/15/2023	
CONSTR. CONTR. NO. N40080-22-R-8580	09/15/2023	
NAVFAC DRAWING NO. 13140325	09/15/2023	
SHEET 55 OF 229	09/15/2023	
CS-102	09/15/2023	