

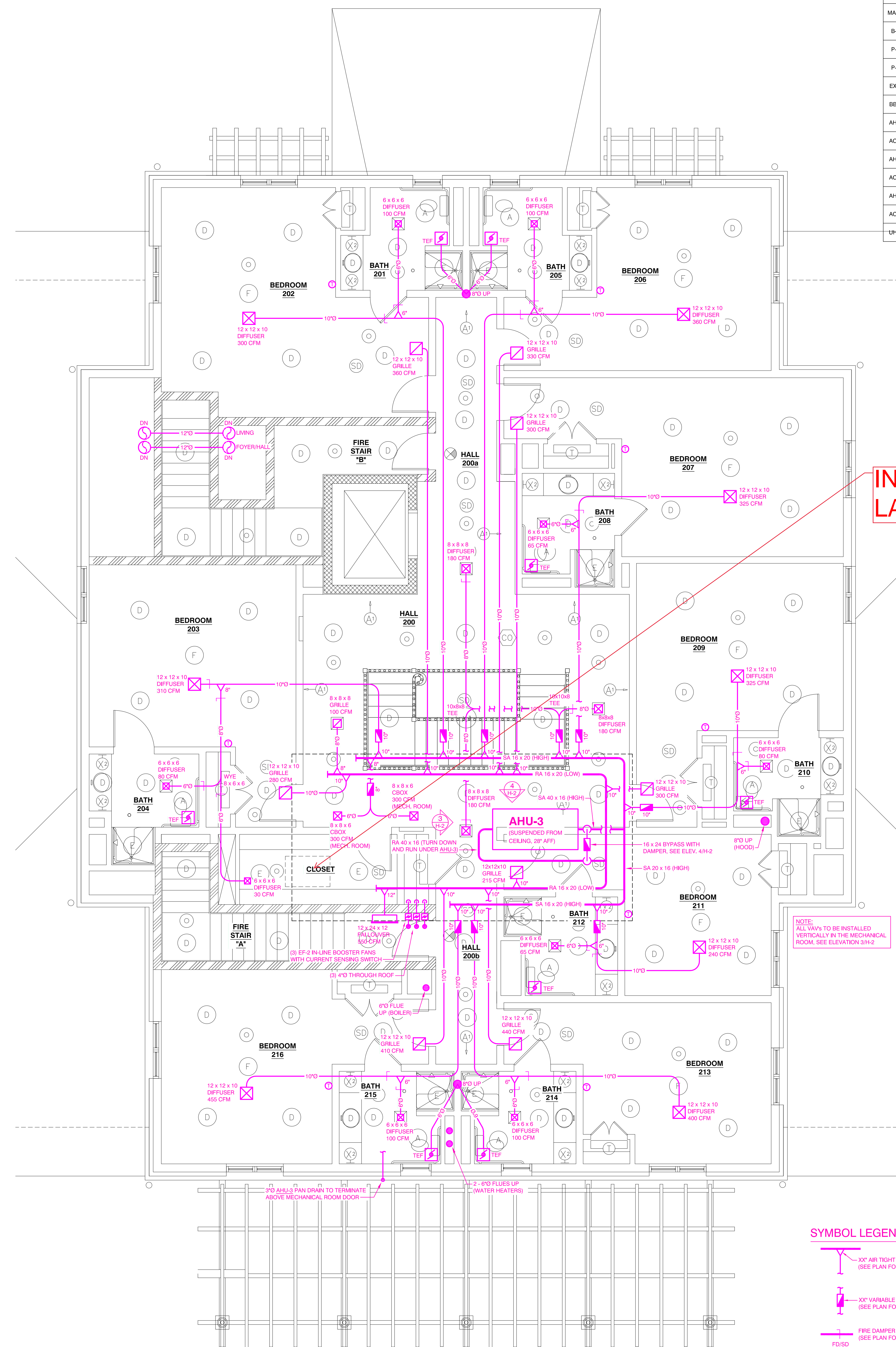
EQUIPMENT SCHEDULE								
MARK	DESCRIPTION	QTY	MANUFACTURER	MODEL NO.	ELECTRICAL			REMARKS
					V	I	Hz	
B-1	VOLUME WATER-HEATER	1	LAARS	MTV200	120	1		
P-1	CIRCULATOR PUMP	1	GRUNDFOS	UPS26-66FC	115	1		1/8 HP
P-2	CIRCULATOR PUMP	1	GRUNDFOS	UPS15-66FC	115	1		1/25 HP
EX-1	VERTICAL EXPANSION TANK	1	TACO	CEB-64-125				BOTTOM SYSTEM CONNECTION
BB-1	BUFFER TANK/HYDRONIC SEPARATOR	1	BOILER BUDDY	BB-30				30 GALLON
AH-1	AIR HANDLER	1	CARRIER	40RUA	208/230	3	60	10 TON
AC-1	CONDENSING COIL	1	CARRIER	38AUD	208/230	3	60	10 TON
AH-2	AIR HANDLER	1	CARRIER	40RUA	208/230	3	60	10 TON
AC-2	CONDENSING COIL	1	CARRIER	38AUD	208/230	3	60	10 TON
AH-3	AIR HANDLER	1	CARRIER	40RUA	208/230	3	60	10 TON
AC-3	CONDENSING COIL	1	CARRIER	38AUD	208/230	3	60	10 TON
UH-1	UNIT HEATER	3	QUIET-ONE 2000	PCU-7	120	1	60	



Fisher House
Foundation, Inc.

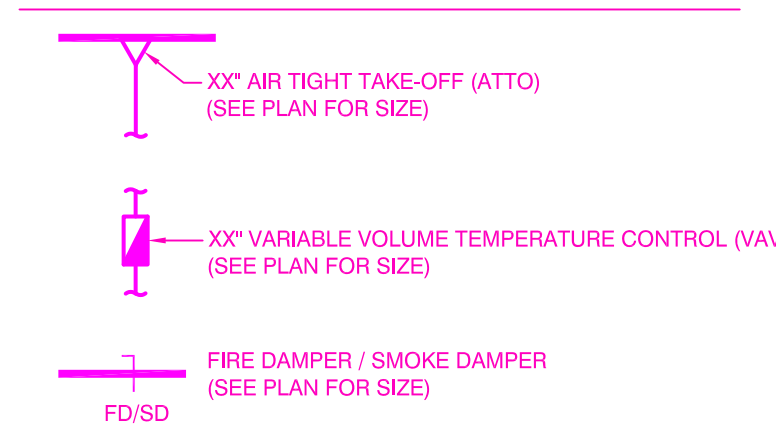
THE METALSMITHS, INC.

7116 220th S.W., Suite 10
Mount Lake Terrace, WA 98043
206-362-3430



INSTALL PERMANENT FOLDING
LADDER TO PENTHOUSE ABOVE

SYMBOL LEGEND




1	02/12/20	AS-BUILT
REVISIONS	DATE	DESCRIPTION

**PROPOSED FISHER HOUSE
VA MEDICAL CENTER
DENVER, CO**

DRAWING

SECOND FLOOR
MECHANICAL PLANS & DETAILS
AS-BUILT

	SCALE	FLOOR	DRAWING No. H-2
	DATE		
	$\frac{1}{4}" = 1'-0"$ 06/10/19		