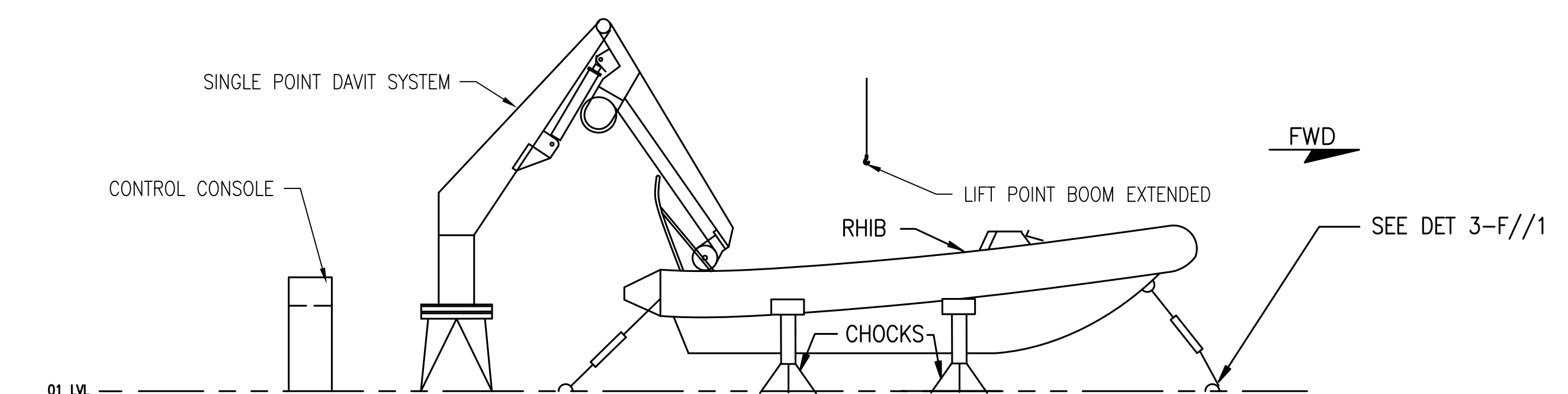
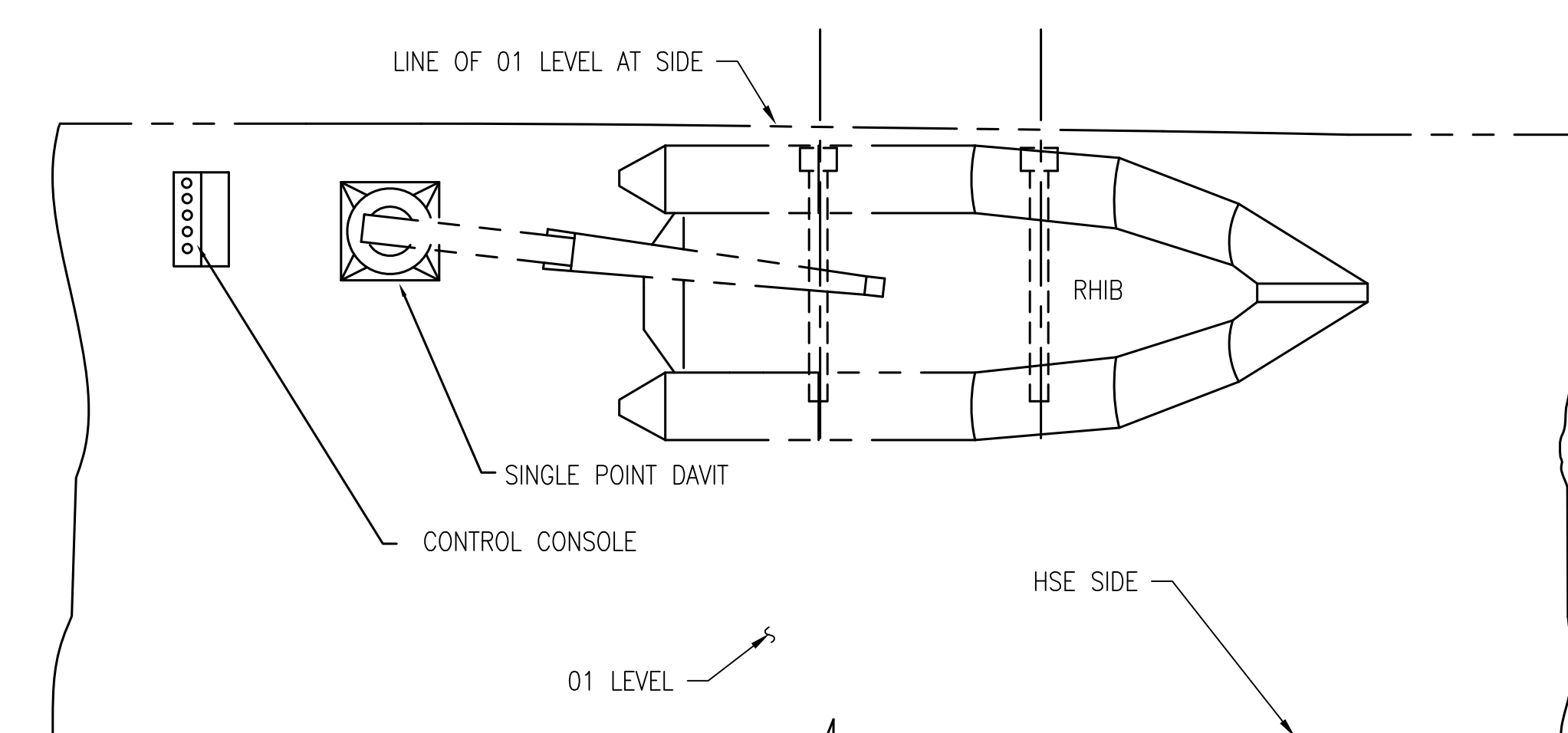


REV	ITEM NO.	P.C. NO.	DESCRIPTION	QUAN.	UNIT	REMARKS
			1 PLATE, 15.3# STL	100	SF	
			2 BAR, FLAT, 3/8"X 4" STL	20	FT	
			3 BAR, TEE, 6"X 3"X 5.9# STL	40	FT	
			4 PLATE, 40.8# STL	20	SF	
			5 BAR, FLAT, 3/8"X 6" STL	20	FT	
			6 BAR, ANGLE, 8"X 4"X 1/2" STL	24	FT	
			7 BAR, ROUND, 5/8" DIA. CRES.	3	FT	
			8 BAR, ANGLE, 6"X 3 1/2"X 1/4" STEEL, ASTM-A36	20	FT	
			9 PLATE, 10.2# STL	2	SF	
B			10 PLATE, 20.4# STL	50	SF	



ELEVATION 10-D

PORT SIDE  
SPD/RHI INSTALLATION  
SCALE: NONE



ELEVATION 10-A 

SPD/RHI ARRANGEMENT

SCALE: NONE

U.S. COAST GUARD HEADQUARTERS		WASHINGTON, D.C. 20593	
OFFICE OF NAVAL ENGINEERING			
282		WMCC	
SPD/RHI INSTALLATION ARRANGEMENT AND DETAILS			
SIZE	FSOM CASE NO	U.S.C.G. DRAWING NO.	REV
H	81340	282WMCC-583-001	B
SCALE	3/8"=1'-0"	3.0 SQ FT	SHEET 2 OF 2



