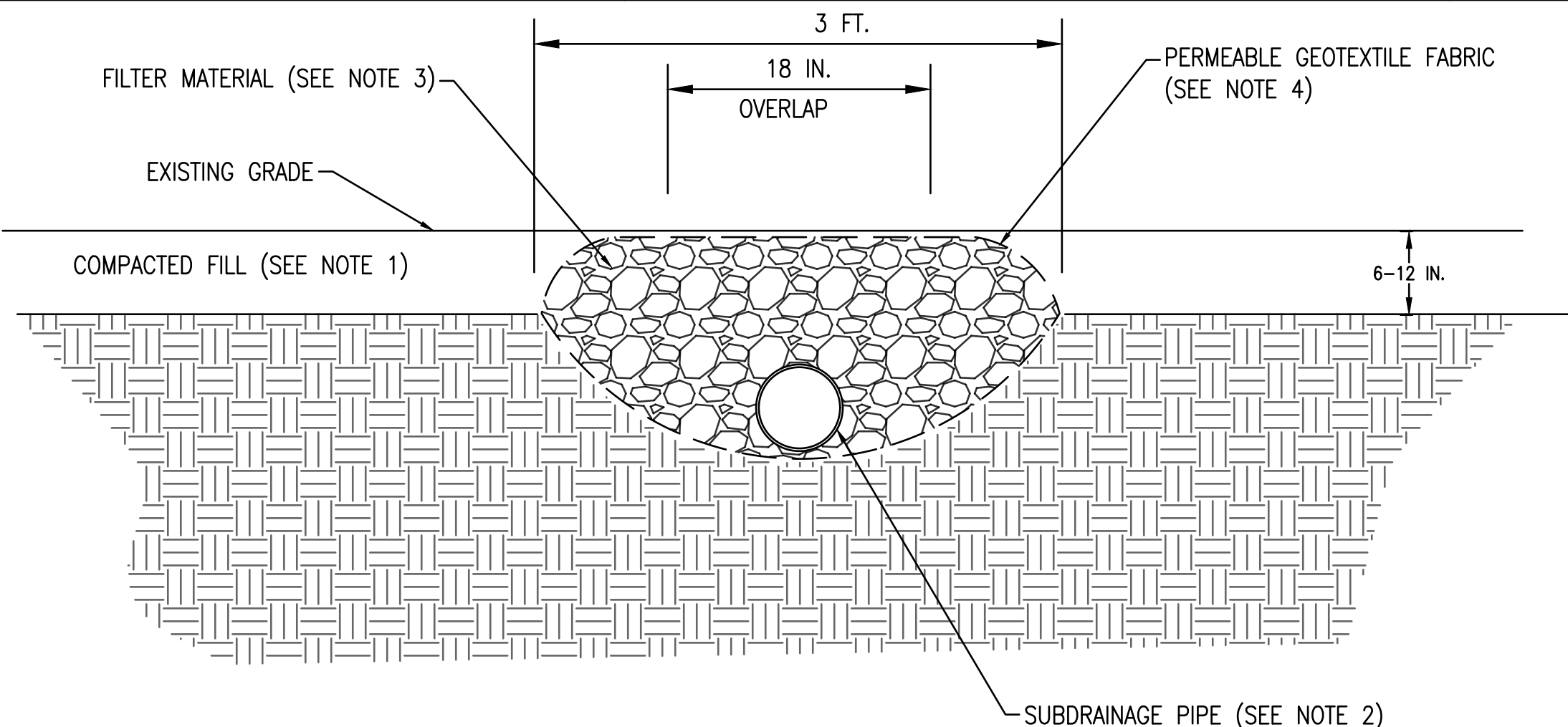


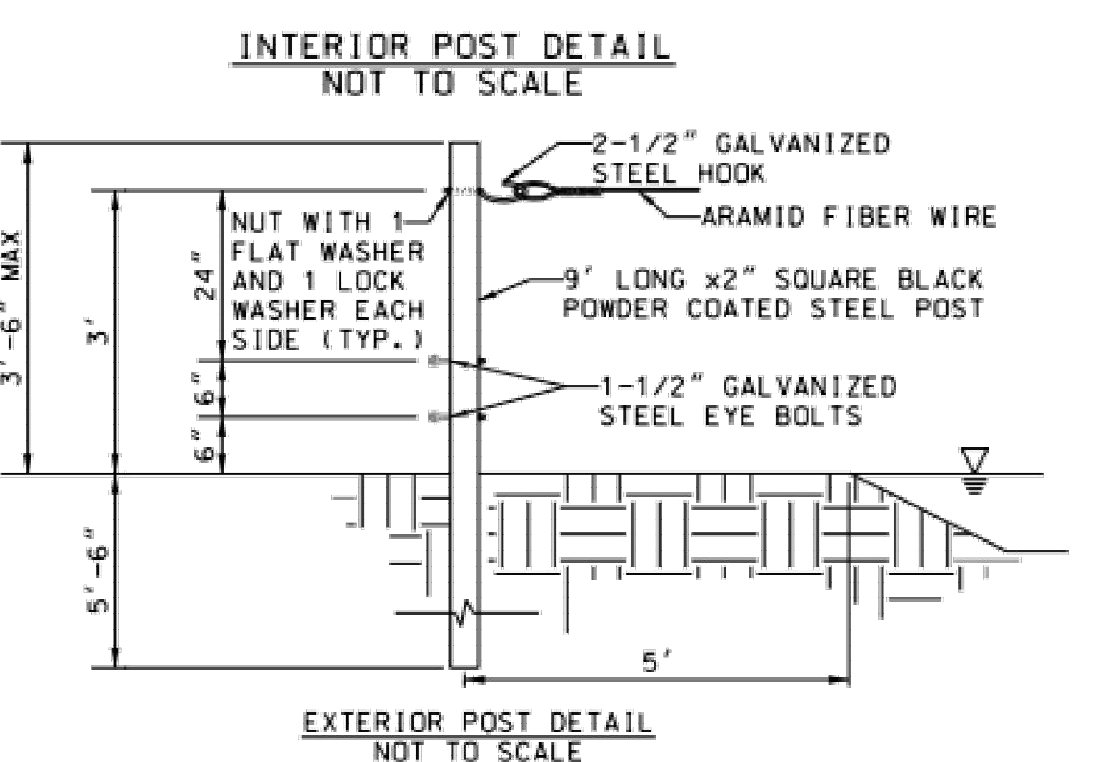
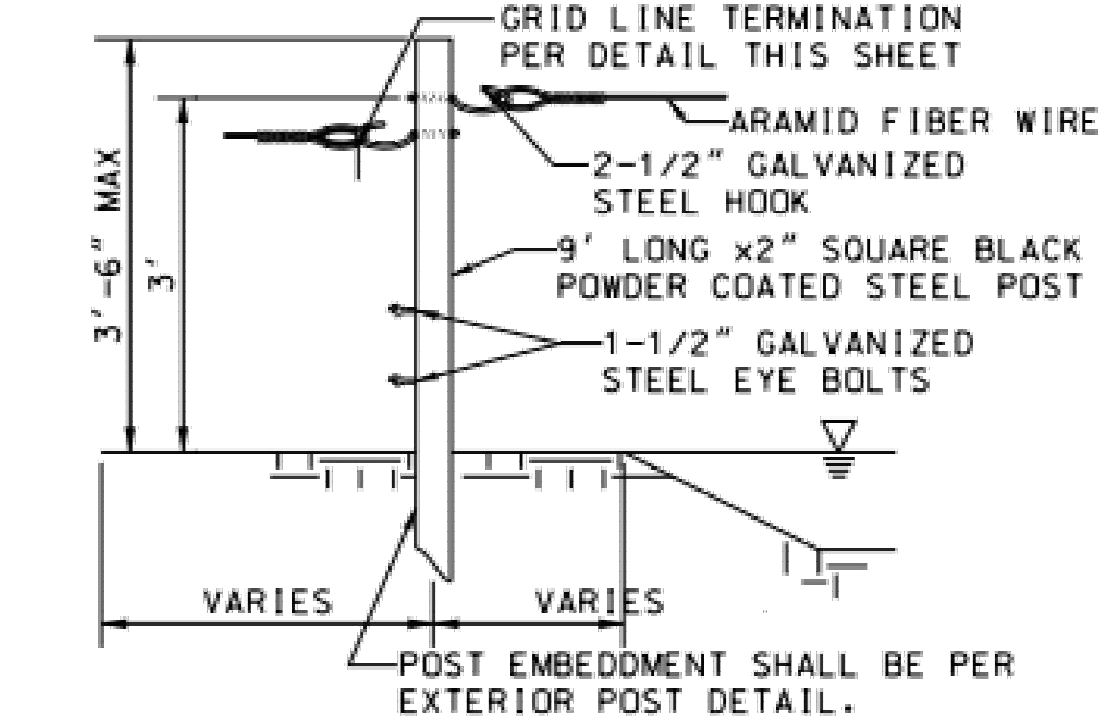
D



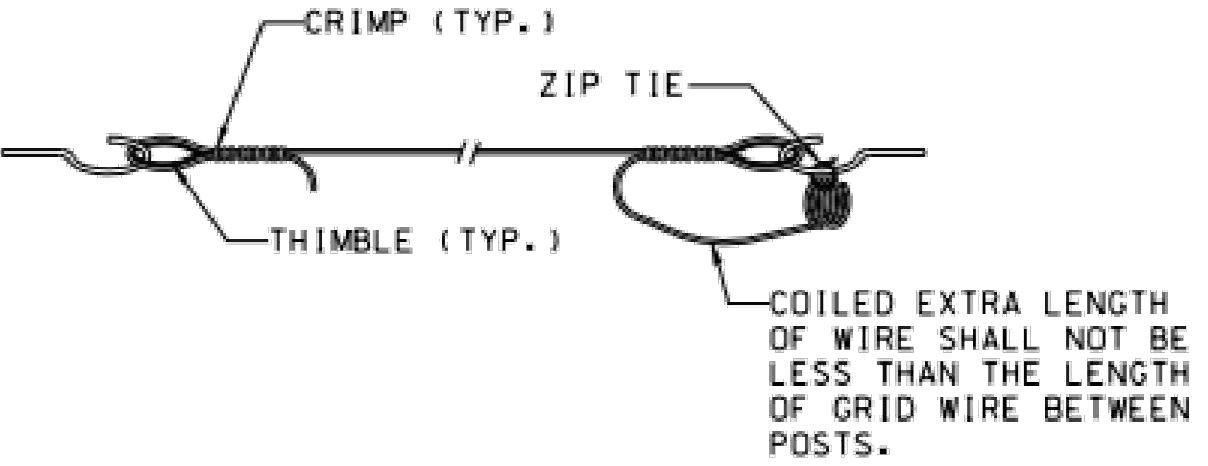
- NOTES:
1. COMPACTED FILL SHOULD CONSIST OF MATERIAL CLASSIFIED SM, SP, SW, CP, OR GW PER ASTM D-2847. THE LIQUID LIMIT AND PLASTICITY INDEX OF THE BACKFILL MATERIAL SHOULD NOT EXCEED 40 AND 15, RESPECTIVELY.
 2. SUBDRAINAGE PIPING SHOULD BE 4 INCH DIAMETER SLOTTED CORRUGATED POLYETHYLENE (PE) TUBING ACCORDING TO ASTM F-405 WITH 1/8 INCH SLOT WIDTH. PIPING SHOULD CONNECT TO A SUITABLE GRAVITY OUTLET.
 3. FILTER MATERIAL SHOULD SATISFY REQUIREMENTS FOR AASHTO NO. 7.
 4. PERMEABLE GEOTEXTILE FABRIC SHOULD HAVE AN EQUIVALENT OPENING SIZE NOT GREATER THAN THE US STANDARD NO. 70 SIEVE.

FRENCH DRAIN DETAIL
CG-503 D2

C

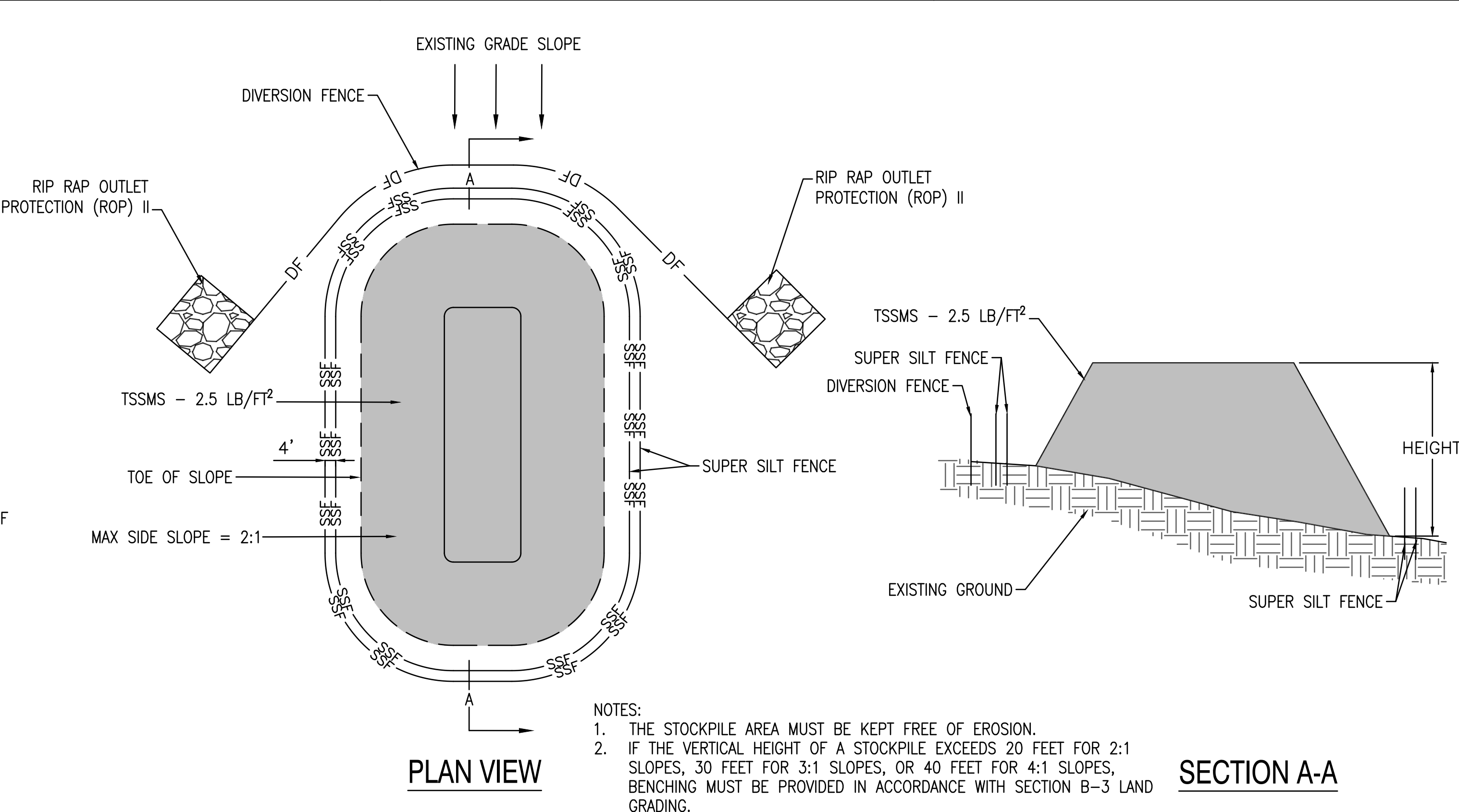


B



BIRD DETERRENT NETTING DETAIL
CG-503 B2

A



- NOTES:
1. THE STOCKPILE AREA MUST BE KEPT FREE OF EROSION.
 2. IF THE VERTICAL HEIGHT OF A STOCKPILE EXCEEDS 20 FEET FOR 2:1 SLOPES, 30 FEET FOR 3:1 SLOPES, OR 40 FEET FOR 4:1 SLOPES, BENCHING MUST BE PROVIDED IN ACCORDANCE WITH SECTION B-3 LAND GRADING.

STOCKPILE TYPICAL DETAIL
CG-503 D4

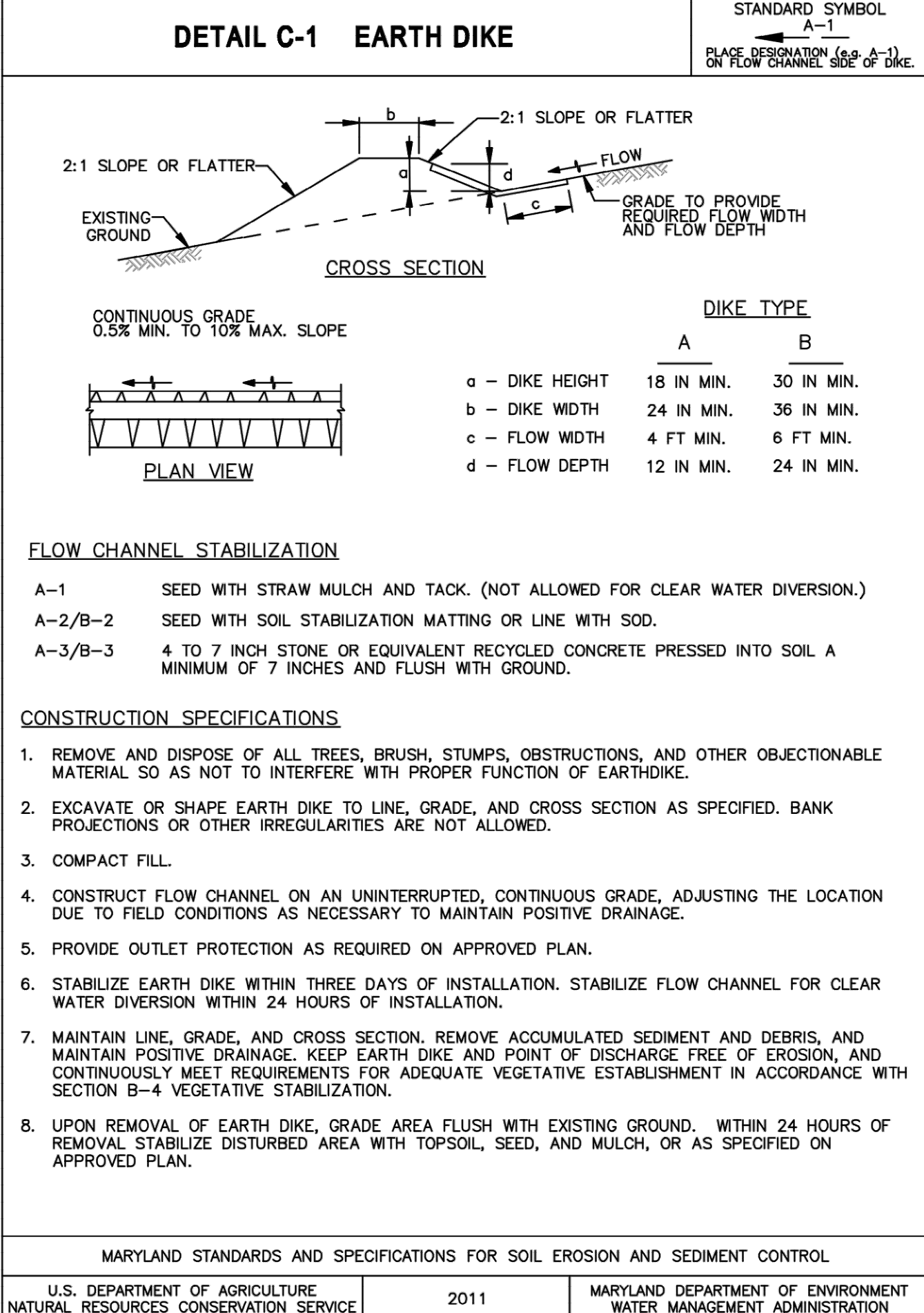
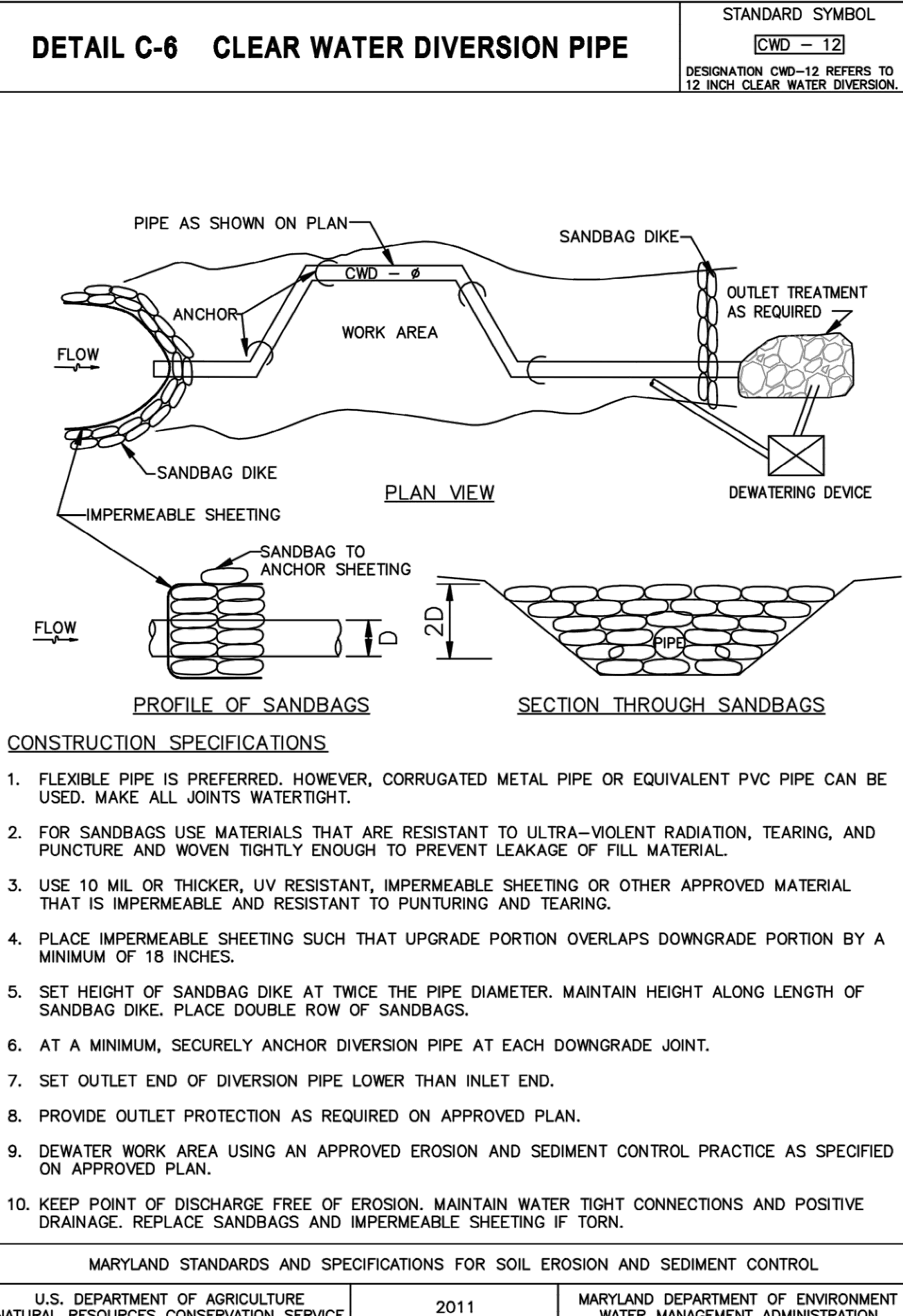
SECTION A-A

D



JOINT VENTURE
Wiley|Wilson
BURNS
MEDONNELL

C



B

DEPARTMENT OF THE NAVY
NAVAL FACILITIES ENGINEERING COMMAND
WASHINGTON NAVY YARD
JOINT BASE ANDREWS NAVAL AIR FACILITY
CAMP SPRINGS, MD
P-3002 RELOCATE HAZARDOUS CARGO
PAD AND EOD PROFICIENCY RANGE
EROSION AND SEDIMENT CONTROL DETAILS

SCALE: AS NOTED
PROJECT NO.: 139650
CONSTR. CONTR. NO.: N40080-22-R-8580
NAVFAC DRAWING NO.: 13140404
SHEET 134 OF 229
CG-503

A