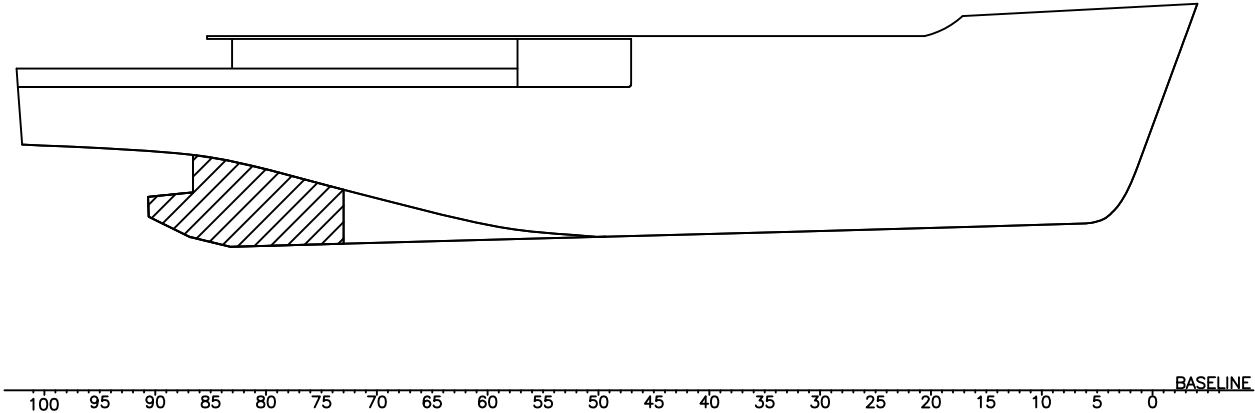


GENERAL NOTES:

1. THE VESSEL SHALL BE CLASSIFIED UNDER ABS MALTESE CROSS A1, CIRCLE E, UNRESTRICTED SERVICE AND ICE CLASS CO.
2. ALL MATERIAL SHALL BE ORDINARY STRENGTH STEEL, GRADE A, UNLESS OTHERWISE NOTED.
3. WORKMANSHIP SHALL BE IN ACCORDANCE WITH THE "NOAA" STATEMENT OF REQUIREMENTS" AND ACCEPTABLE COMMERCIAL MARINE QUALITY.
4. ALL WELDING SHALL BE IN ACCORDANCE WITH REFERENCE NO. 2.
5. END CONNECTION DETAILS SHALL BE IN ACCORDANCE WITH HMI STANDARDS, REFERENCE NO. 1.
6. UNLESS OTHERWISE NOTED, ALL END CONNECTIONS SHALL BE "EC-F".
7. COPEs, SNIPES AND DRAINS SHALL BE IN ACCORDANCE WITH HMI STANDARDS.
8. ALL PLATES AND SHAPES ARE IN IMPERIAL UNITS. ALL DIMENSIONS ARE IN METRIC.
9. FRAME SPACING = 600mm.
10. WHERE STERN TUBE PASSES THROUGH BULKHEADS, A PRELIMINARY OPENING OF Ø24" IS TO BE CUT, THEN FINALIZED AT INSTALLATION.

REVISIONS				
REV	ZONE	DESCRIPTION	DATE	APPROVED
1		1. EXTENDED HULL APPLICABILITY TO INCLUDE HULL 1956. ITEM 1 PER ENGINEERING DEVELOPMENT.	3/18/05 RMW	3/24/05 FH
2		1. SH 1, EXTENDED HULL APPLICABILITY TO INCLUDE HULL 1957. 2. SH 1, ADDED "AS-BUILT" STAMP, APPLICABLE TO M282 ONLY. ITEM 1 & 2 PER ENGINEERING DEVELOPMENT.	7/31/06 MDP	

AS-BUILT



KEY PLAN
SCALE: 1:200

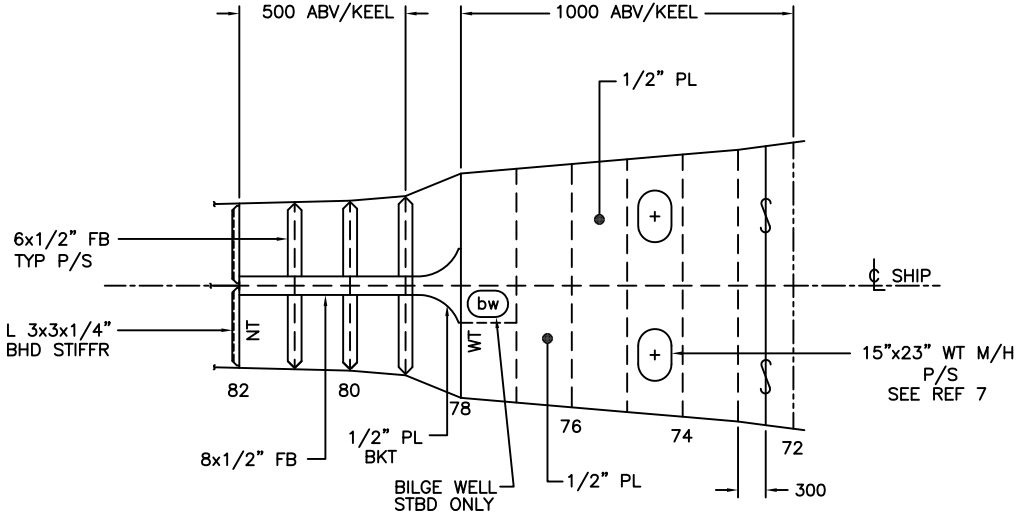
DOCUMENT DISTRIBUTION RECORD																
DATE IN ROOM	9/4/03	9/8/03	9/23/05	7/31/06												
ISSUE DATE	9/8/03	3/24/05														
REV#	0	1	2													
PROJECT ENG	1	1	1													
PROJECT MGR	1	1	1													
ABS	10															
USPH																
USCG																
HMP PC	12	12	12													
PROD DESIGN GROUP	1(3)	1(3)	1(3)													
HULL MGR																
HULL LEAD	(1)	(1)	(1)													
HVAC																
JOINER																
PASCAGOULA PC	3	3	3													
NOISE CONT																
VLL																
ISSUED BY	AE	AE	mp													

RESERVATIONS:

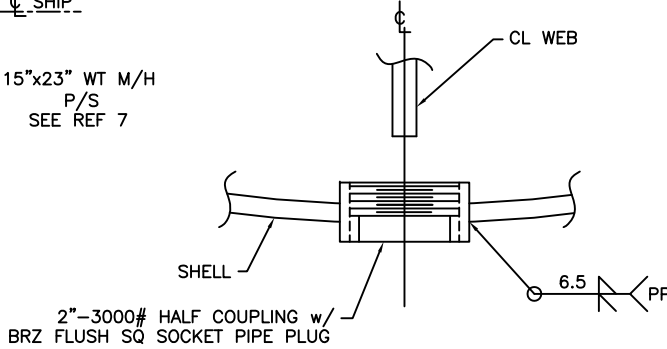
3	SECTIONS
2	PLANS, CL PROFILE & SHELL.
1	TITLE SHEET
SH	DESCRIPTION
DRAWING INDEX	

8	IMPRESSED CURRENT CATHODIC PROTECTION ARRGT & DETAILS	M282-624-FE70
7	STRUCTURAL DOORS, HATCHES & MANHOLES & SCUTTLES	M282-167-FH62
6	SHAFTING LAYOUT AND DETAILS	M282-243-FM01
5	HULL TRANSOM SCANTLING	M282-100-FH05
4	HULL STERNBODY SCANTLING	M282-100-FH04
3	LINES AND OFFSETS	M282-252-FC01
2	WELDING BOOKLET	M282-074-FH90
1	TYPICAL STRUCTURAL DETAILS	M282-100-FH67
NO.	TITLE	DRAWING NUMBER
REFERENCES		

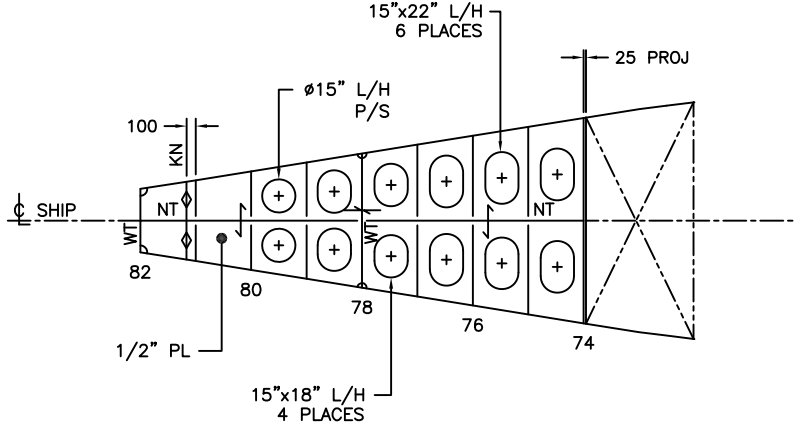
HULL APPLICABILITY			VT Halter Marine, Inc.			VESSEL		
M282 HULL 1953 M283 HULL 1956 M284 HULL 1957			This drawing, design concept and specifications are the property of VT Halter Marine, Inc. and are furnished on a confidential basis with an expressed understanding that they will not be copied in any manner, used for manufacture, sold, transferred, nor used to the detriment of said firm without written permission. The recipient further agrees not to disclose these contents hereof to any other parties except for those specific purposes for which this drawing was issued.			FRV40 CLASS 63m FISHERIES RESEARCH VESSEL		
2			DRAWN BY WH 8/13/03 CHECKED BY AE 8/18/03 APPROVED BY JO 9/7/03			TITLE		
10 9 8 7 6 5 4 3 2 1			CAGE CODE 3B213 SCALE NONE			BOSSING AND STERN FRAME SCANTLINGS		
JOB NO. M282			ITEM 110			DELIVERABLE FH18		
SHEET 001			REV 02			FILE R:\M282\FUNCTIONAL DESIGN\INWORK\HULLDWGS		
SHEET 1			OF 3			PLOT: 1=1		



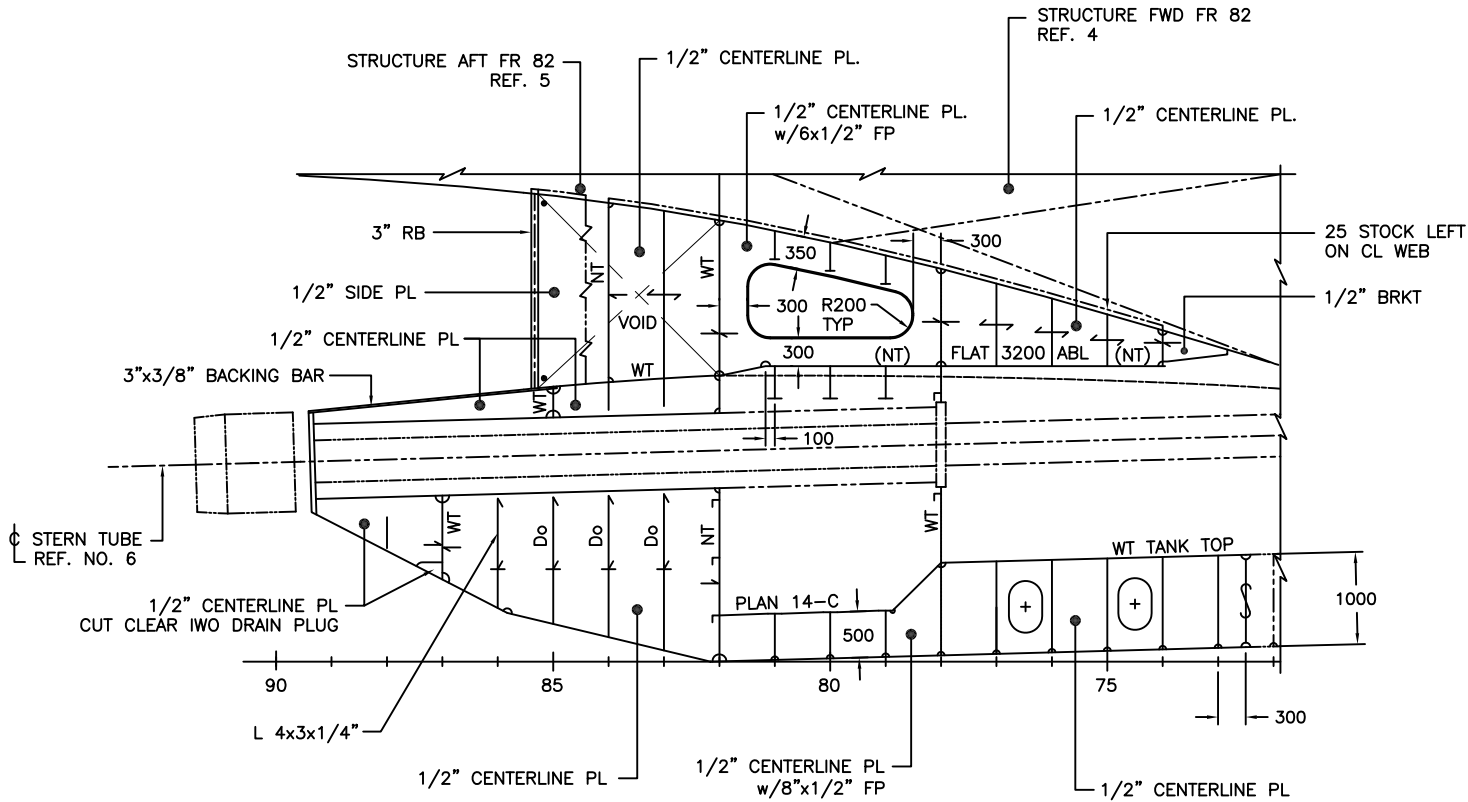
PLAN 14-(
500/1000 ABV KEEP



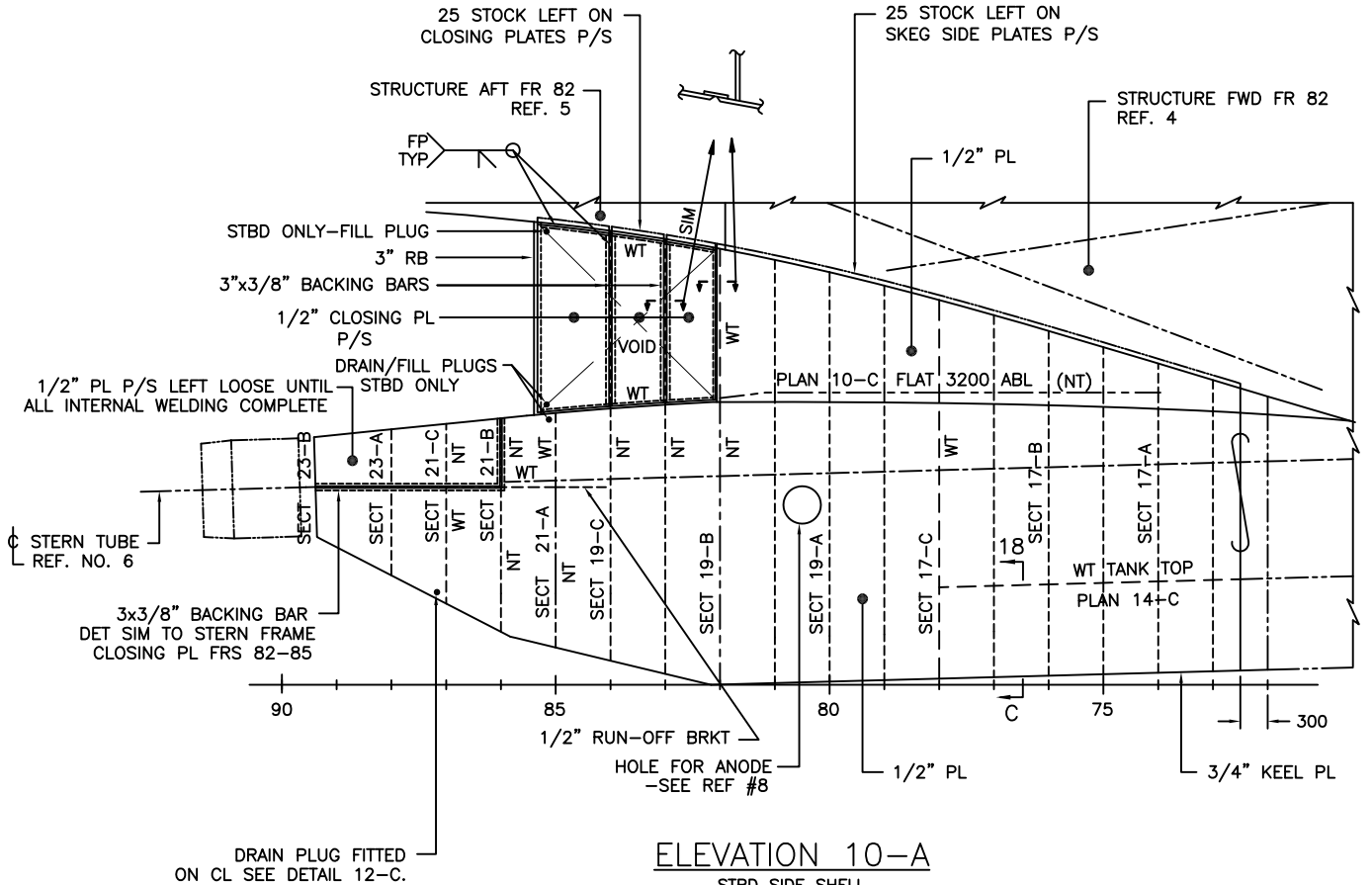
DETAIL 12-0
DRAIN PLUG



PLAN 10-C
3200 FLAT



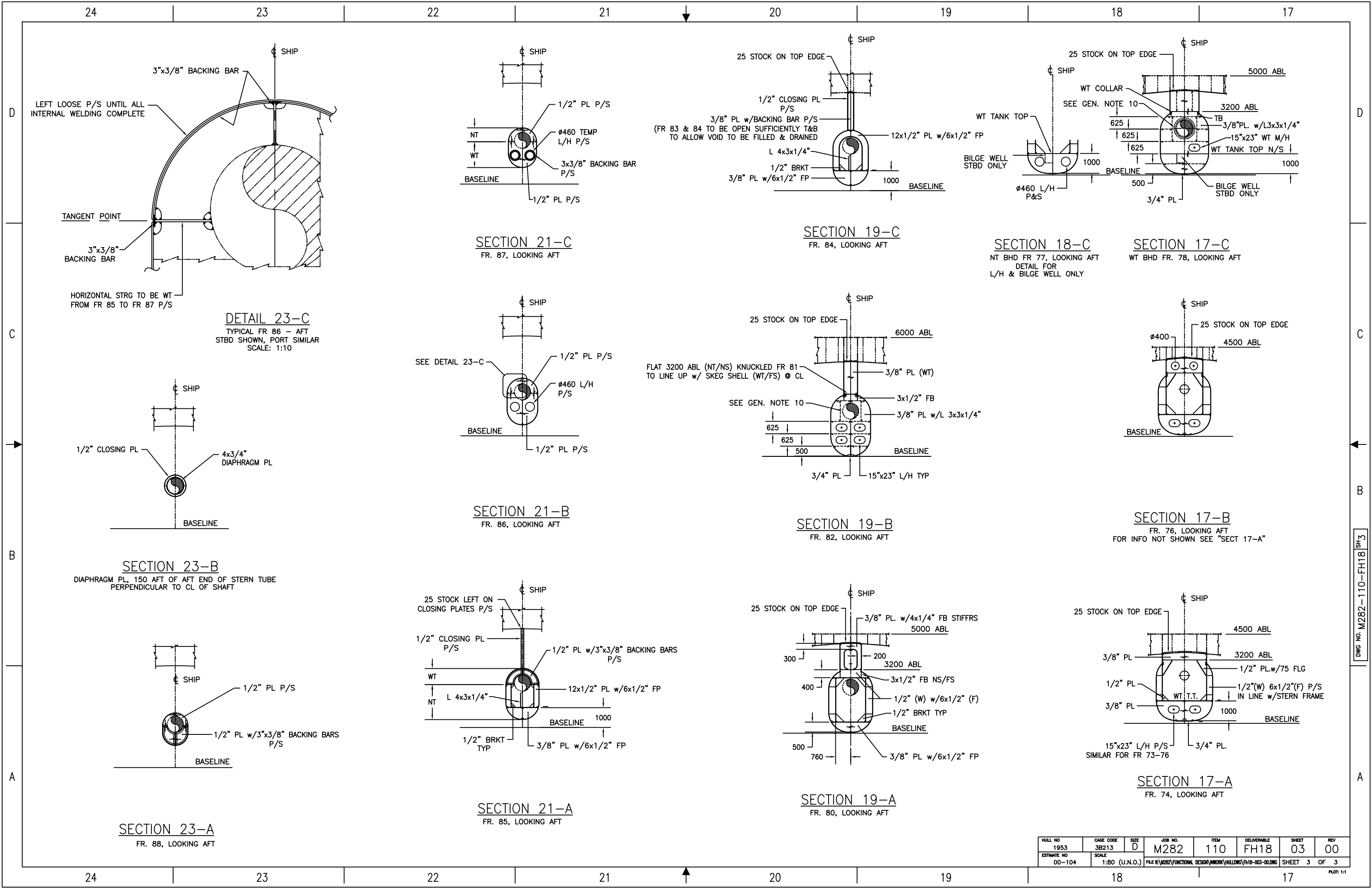
ELEVATION 14-A
CENTERLINE PROFILE



ELEVATION 10-A
STBD SIDE SHELL
PORT SIDE SIM BUT OPP HAN

HULL NO 1953	CAGE CODE 3B213	SIZE D	JOB NO. M282	ITEM 110	DELIVERABLE FH18	SHEET 02	REV 00
ESTIMATE NO 00-104	SCALE 1:40	FILE R\W282\FUNCTIONAL DESIGN\WORK\HULLING\FH18-002-00.DWG			SHEET 2 OF 3		

PLOT: 1:1



HULL NO 1953	CAGE CODE 3B213	SIZE D	JOB NO. M282	ITEM 110	DELIVERABLE FH18	SHEET 03	REV 00
ESTIMATE NO 00-104	SCALE 1:80 (U.N.O.)	FILE R\M282\FUNCTIONAL DESIGN\WORK\HULLS\FH18-003-00.DWG	SHEET 3	OF 3	PLOT: 1:1		

DWG NO. M282-110-FH18 SH 3