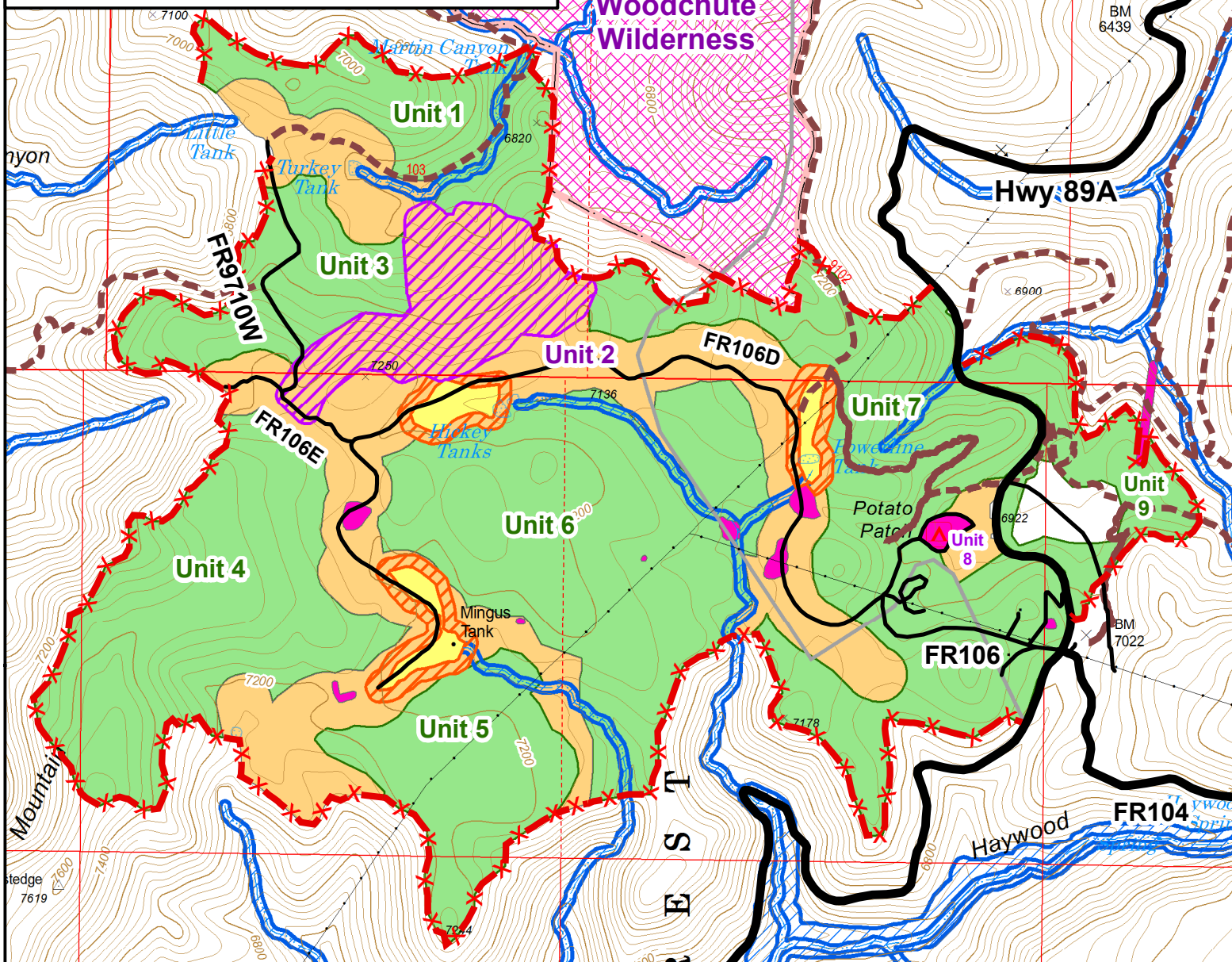


Prescott National Forest Turkey Tank TSI Silvicultural Prescription Map



Legend

*** Timing Restriction: No activity from Mar 1 to Oct 1 - Bark Beetle***

Turkey Tank TSI - No Activity Mar. 1 to Oct. 1

- Hand Thin & Hand Pile Slash- 1,096 acres
- Hand Thin, Lop & Scatter Slash- 343 acres
- Install Hand Line - 2 ft to bare mineral soil - 9.44 mi
- Turkey Roost Habitat
- Meadow Treatment - Lop/Scatter Slash
- Meadow Buffer - Do not cut brush - Lop/Scatter - 2 chains
- Sensitive Areas - Hand Thin, Lop/Scatter - 13.47 ac
- Streamside Management Zone
- Woodchute Wilderness
- Main Roads
- Trails

1:20,000

BR 10.11.2022

0 0.1 0.2 0.3 0.4 0.5 Miles



	Slash	Acres	Hand Line
Unit 1	Hand Pile	86.9 ac	1.33 mi
Unit 2	Lop/Scatter	413.9 ac	0.96 mi
Unit 3	Hand Pile	76.4 ac	0.84 mi
Unit 4	Hand Pile	189.1 ac	1.55 mi
Unit 5	Hand Pile	95.3 ac	0.75 mi
Unit 6	Hand Pile	250.5 ac	0.53 mi
Unit 7	Hand Pile	253.8 ac	2.13 mi
Unit 8	Lop/Scatter	13.2 ac	0 mi
Unit 9	Hand Pile	60.6 ac	1.35 mi
Total		1439.7 ac	9.44 mi