

SIGNOFF / APPROVAL NOTES



Guldmann Inc.
14401 McCormick Drive
Tampa FL, 33626 Unit A
Toll Free: 1(800)-664-8834
Fax: 1(813)-860-9538
Email: info@Guldmann.net

NOTES

- 1. HOIST = 770 LBS, 1100 LBS
ALL BUILD TO 1100 LBS
- 2. FLUSH RECESSED, TYPE G
- 3. CEILING HEIGHT = 8' - 11", 9' - 0", 9' - 6"
AFF TO DECK = 14' - 0"
- 4. ATTACHMENT TYPE = I-BEAM
SPAN = 5' - 0"
- 5. ADJUST END STOPS TO AVOID BOOM

- 1. The facility structure capacity must be able to support the load specified on the installation drawing.
- 2. Electrical power source provided by the facility, position to be verified in the field.
- 3. Guldmann Inc. reserves the right to slightly modify the track layout if necessary without Facility approval.
This includes lowering the system to avoid ceiling objects.
- 4. Guldmann Inc. will not be held responsible for any damages, inconvenience, resulting from hitting any non visible conduits during our installation process of which we have not been advised.
- 5. Modifications of door headers by the facility.
- 6. Signed drawings are required prior to ordering and installation of ceiling lifts.
This signature of each drawing confirms agreement of all the conditions listed above.
- 7. Systems are tested at 1.5 times capacity.
550 lbs. tested at 825 lbs.; 770 lbs. tested at 1155 lbs.; 825 lbs. tested at 1238 lbs.; 1100 lbs. tested at 1650 lbs.

MY SIGNATURE BELOW VERIFIES THAT I HAVE:

Reviewed all 16 pages, with a total quantity of 16 room(s), 17 system(s) for the approbation of layout for each room and the approbation of structure for each room.

CUSTOMER APPROVAL: DATE:

Albany Stratton VAMC
Stratton ED
113 Holland Ave
Albany NY, 12208
PROJECT ID:103177

Revision Schedule			
Date	Issued by	Letter	Description

ACCURATE TO 4" BASED
ON PDF CONVERSION

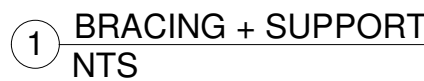
DATE: 07/26/2022DRAWN BY: KCA

APPROVED BY:

PROJECT NAME: Stratton ED

SHEET DESCRIPTION: FACILITY SIGNOFF

SHEET NO: GUL101



RAIL SPAN CHART

Rail Type	Weight (KG/M)	Weight (LBS/FT)	Span (mm)	Span (in)
A-RAIL	2.6	1.75	62	(2 1/2")
B-RAIL	5.0	3.36	96.5	(3 11/16")
C-RAIL	6.0	4.03	125	(5")

3 RAIL SPAN CHART

Fixed rail systems

A Guldmann class I transformer must be used.

electricians and according to IEC/UL 60601-1.

Terminals on transformers Class I

80° C, min. 18AWG (1 mm²))

Transformer DK-13991

In:

Terminal 1 = N

Terminal 2 = 100-115V AC

Terminal 3 = 230V AC

Tern
Tern

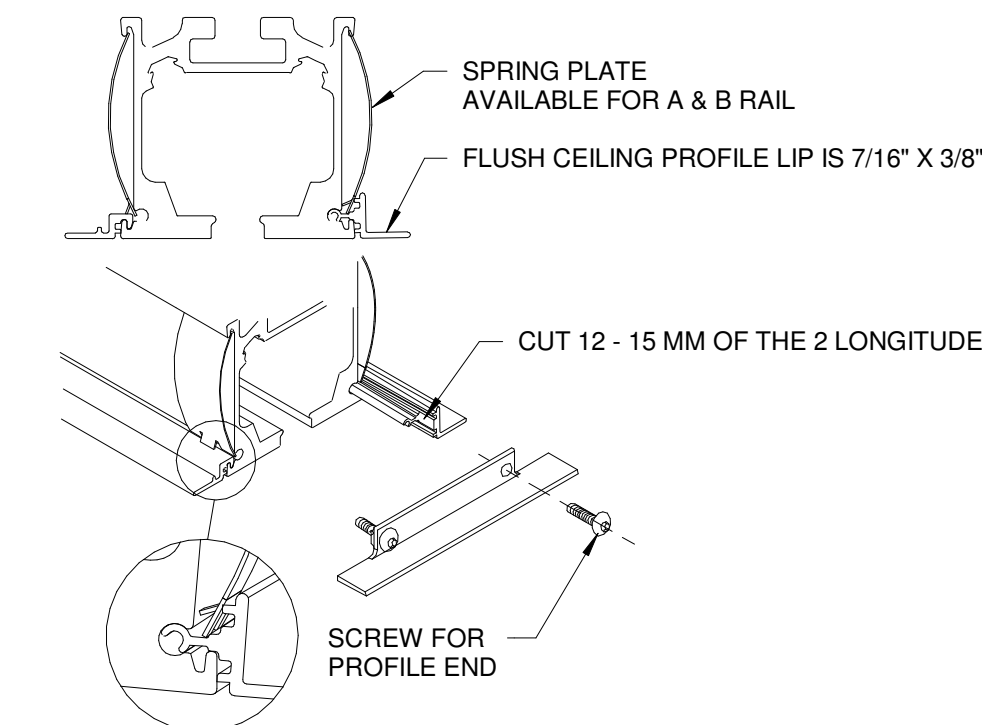
Out:

Out:
Terminal 5 = 33V AC

2 GH3 TRANSFORMER



POWER TO BE WITHIN 15 FT OF END OF FIXED RAIL



5 FLUSH CEILING PROFILE
NTS

Guldmann Inc.

NOTES

1. HOIST = 770 LBS, 1100 LBS
ALL BUILD TO 1100 LBS
2. FLUSH RECESSED, TYPE G
3. CEILING HEIGHT = 8' - 11", 9' - 0", 9' - 6"
AFF TO DECK = 14' - 0"
4. ATTACHMENT TYPE = I-BEAM
SPAN = 5' - 0"
5. ADJUST END STOPS TO AVOID BOOM

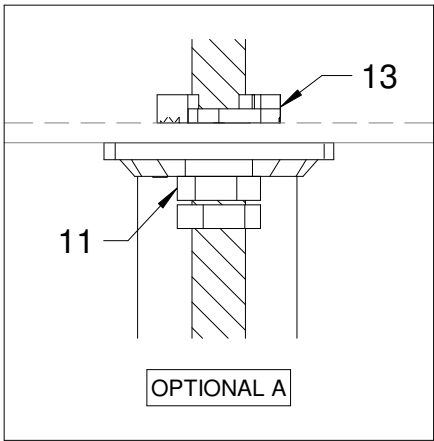
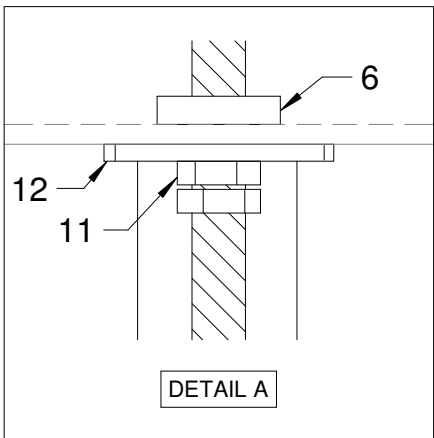
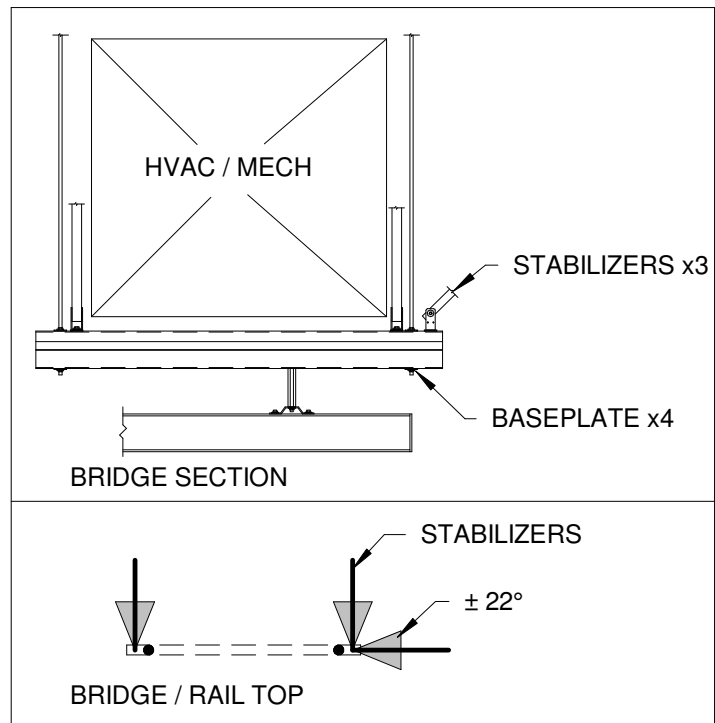
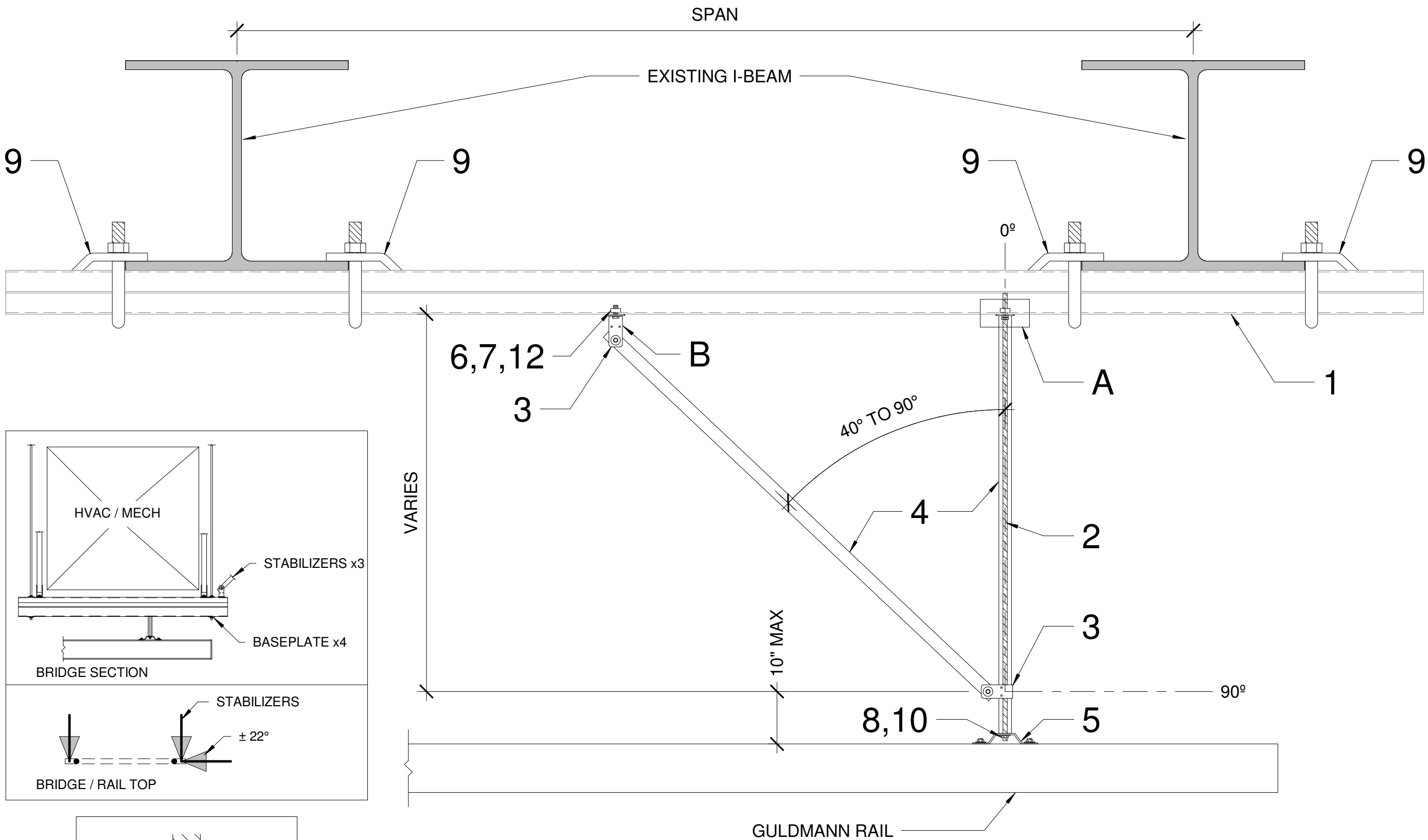
Revision Schedule		
Date	Issued by	Number
DATE: 07/26/2022		DRAWN BY: KCA
APPROVED BY:		
PROJECT NAME: Stratton ED		
SHEET DESCRIPTION: GEN. INFO		
SHEET NO: GUL102		



Guldmann Inc.
14401 McCormick Drive
Tampa FL, 33626 Unit A
Toll Free: 1(800)-664-8834
Fax: 1(813)-880-9556
Email: info@Guldmann.net

NOTES

1. HOIST = 770 LBS, 1100 LBS
ALL BUILD TO 1100 LBS
2. FLUSH RECESSED, TYPE G
3. CEILING HEIGHT = 8' - 11", 9' - 0", 9' - 6"
AFF TO DECK = 14' - 0"
4. ATTACHMENT TYPE = I-BEAM
SPAN = 5' - 0"
5. ADJUST END STOPS TO AVOID BOOM



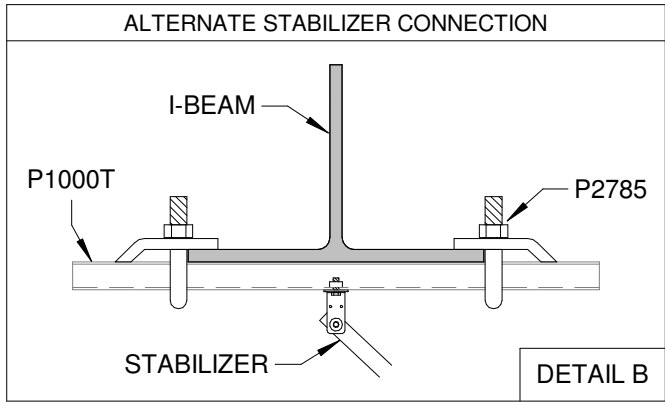
I - BEAM		
TAG	ITEM NUMBER	DESCRIPTION
1	556241	2-7/16" X 10' BACK/BACK PG SOLID
2	HTHR037 12B7	3/8" B7 THREADED ROD
3	550439	STABILIZER BRACKET KIT - GULDMANN
4	550481-US	1" Ø-6013-T6 AL TUBE - GULDMANN
5	550435	CEILING BRACKET KIT - GULDMANN
6	377882	MQM-F WINGNUT 3/8"
7	411764	3/8" X 1-1/4" HEX BOLT
8	11101273	3/8" X 1-1/4" X 1/8" WASHER (THICK)
9	P2787	8-1/4" Beam Clamp
10	113024	3/8" NYLOCK NUT
11	411752	3/8" HEX NUT
12	370632	MQZ-L BASEPLATE 3/8"
13	377885	MQA-F SADDLE NUT 3/8" (OPTIONAL)

DRAWINGS APPROVED FOR THE GULDMANN GH-3 LIFTER SYSTEM STANDARD INSTALLATION OF SUPPORT AND CONNECTION TO I - BEAM.

SYSTEMS INSTALLED FOR 1100 POUNDS WILL BE TESTED AT 1650 POUNDS.

SYSTEMS INSTALLED FOR 770 POUNDS WILL BE TESTED AT 1155 POUNDS.

SYSTEMS INSTALLED FOR 550 POUNDS WILL BE TESTED AT 825 POUNDS.



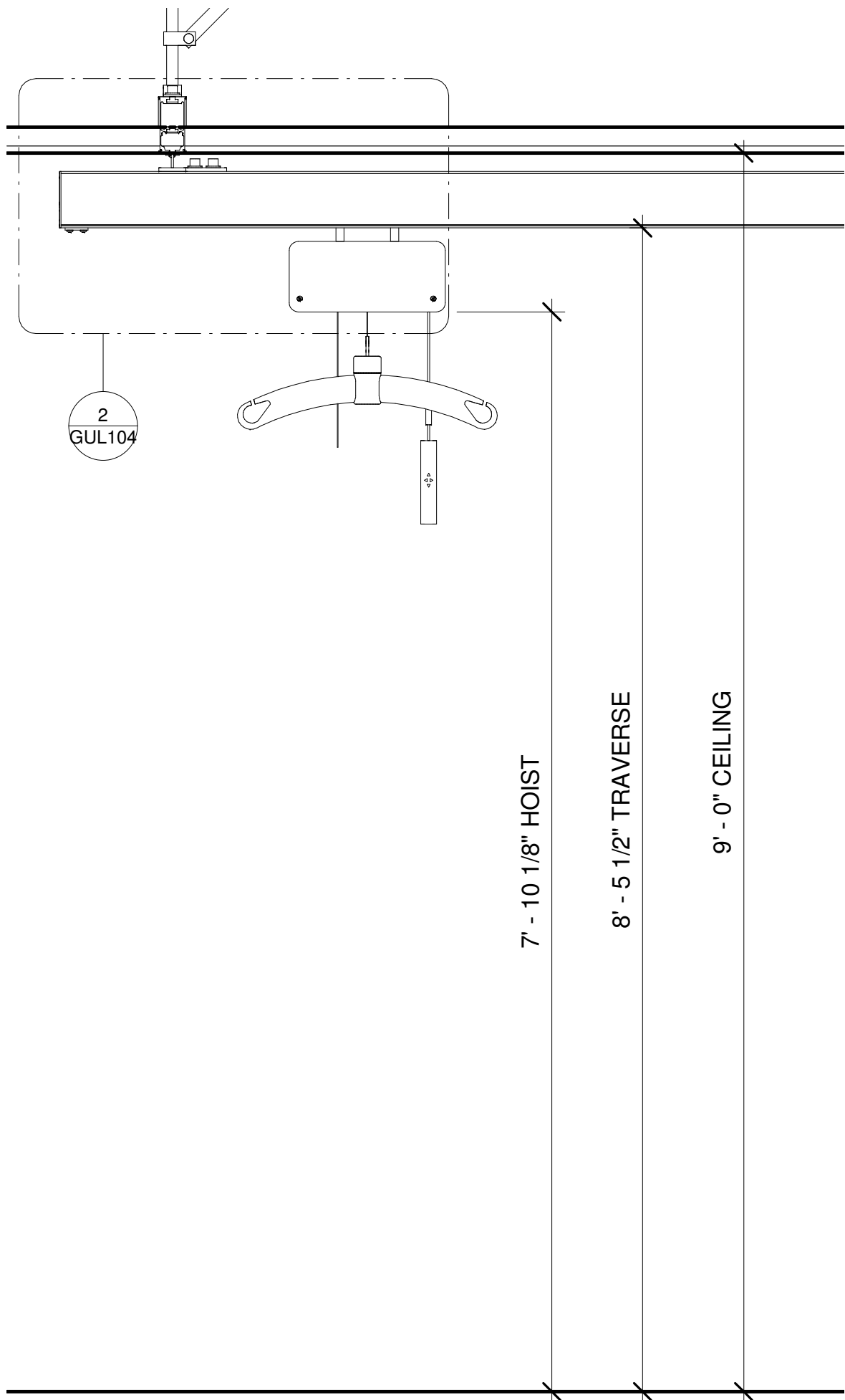
Revision Schedule		
Date	Issued by	Number
DATE:		DRAWN BY:
07/26/2022		KCA
APPROVED BY:		
PROJECT NAME:		
Stratton ED		
SHEET DESCRIPTION:		
ATTACHMENT		
SHEET NO:		
GUL103		



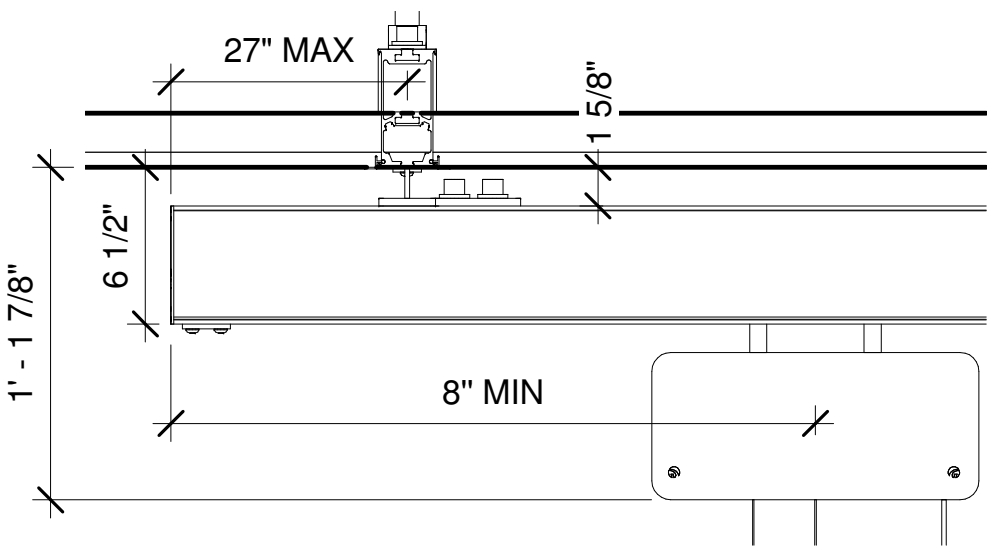
Guldmann Inc.
14401 McCormick Drive
Tampa FL, 33626 Unit A
Toll Free: 1(800)-664-8834
Fax: 1(813)-880-9556
Email: info@Guldmann.net

NOTES

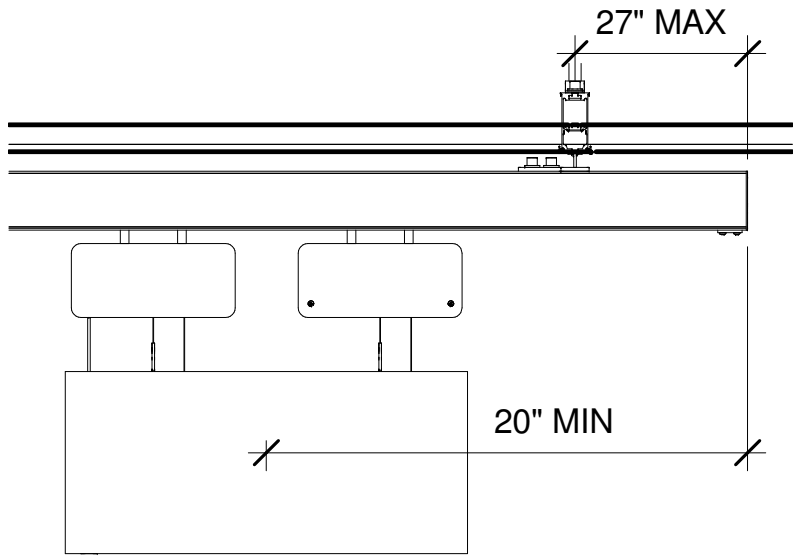
1. HOIST = 770 LBS, 1100 LBS
ALL BUILD TO 1100 LBS
2. FLUSH RECESSED, TYPE G
3. CEILING HEIGHT = 8' - 11", 9' - 0", 9' - 6"
AFF TO DECK = 14' - 0"
4. ATTACHMENT TYPE = I-BEAM
SPAN = 5' - 0"
5. ADJUST END STOPS TO AVOID BOOM



1 ELEVATION - TYPE G
1" = 1'-0"



2 CEILING DETAIL - TYPE G
1 1/2" = 1'-0"



3 CEILING - 1100 LBS TWIN HOIST
3/4" = 1'-0"

Revision Schedule		
Date	Issued by	Number
DATE: 07/26/2022		DRAWN BY: KCA
APPROVED BY:		
PROJECT NAME: Stratton ED		
SHEET DESCRIPTION: PROJECT DETAILS		
SHEET NO: GUL104		

REFERENCE ROOM (2):
E105, E106

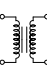
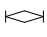





Guldmann Inc.
14401 McCormick Drive
Tampa FL, 33626 Unit A
Toll Free: 1(800)-664-8834
Fax: 1(813)-880-9556
Email: info@Guldmann.net

NOTES

1. HOIST =770 LBS
2. FLUSH RECESSED, TYPE G
3. CEILING HEIGHT = 9' - 0"
4. ATTACHMENT TYPE = I-BEAM
SPAN = 5' - 0"
5. ADJUST END STOPS TO AVOID BOOM

KEY

-  Hoist Transformer
-  Ceiling bracket, Extended
-  Stabilizers
-  B rail
-  Hoist

ACCURATE TO 4" BASED
ON PDF CONVERSION

Revision Schedule

Date	Issued by	Number

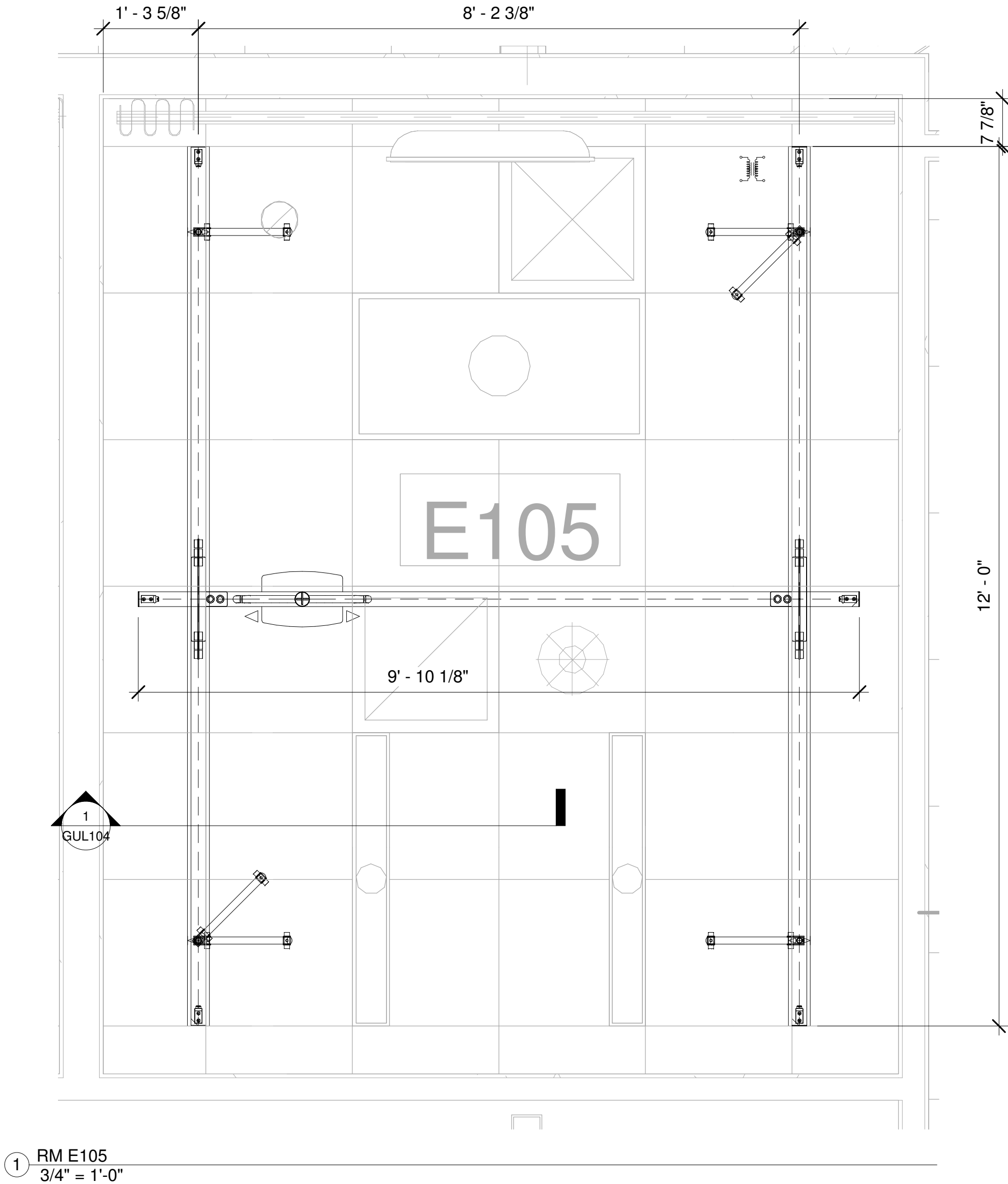
DATE:	DRAWN BY:
07/26/2022	KCA

APPROVED BY:

PROJECT NAME:
Stratton ED

SHEET DESCRIPTION:
RM E105

SHEET NO:
GUL105





Guldmann Inc.
14401 McCormick Drive
Tampa FL, 33626 Unit A
Toll Free: 1(800)-664-8834
Fax: 1(813)-880-9556
Email: info@Guldmann.net

NOTES

- 1. HOIST =770 LBS
- 2. FLUSH RECESSED, TYPE G
- 3. CEILING HEIGHT = 9' - 0"
- 4. ATTACHMENT TYPE = I-BEAM
SPAN = 5' - 0"
- 5. ADJUST END STOPS TO AVOID BOOM

KEY

- Hoist Transformer
- Ceiling bracket, Extended
- Stabilizers
- B rail
- Hoist

ACCURATE TO 4" BASED
ON PDF CONVERSION

Revision Schedule

Date	Issued by	Number

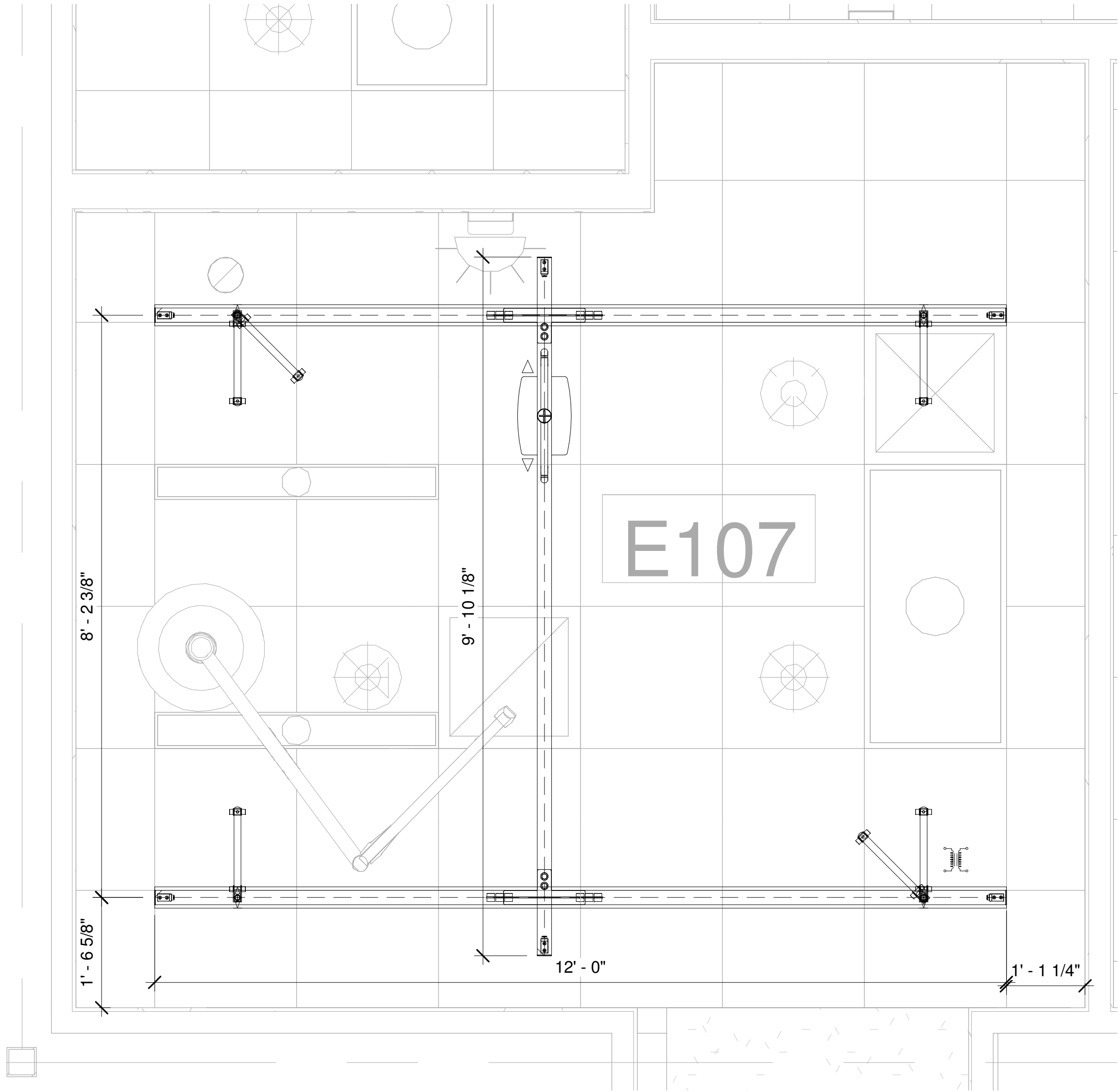
DATE:	DRAWN BY:
07/26/2022	KCA

APPROVED BY:

PROJECT NAME:
Stratton ED

SHEET DESCRIPTION:
RM E107

SHEET NO:
GUL106



1 RM E107
3/4" = 1'-0"

SEE 3/GUL102 FOR RAIL SPANS & ADDITIONAL DIMENSIONS

REFERENCE ROOM (2):
E108, E113

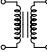
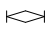


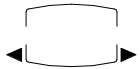


Guldmann Inc.
14401 McCormick Drive
Tampa FL, 33626 Unit A
Toll Free: 1(800)-664-8834
Fax: 1(813)-880-9556
Email: info@Guldmann.net

NOTES

1. HOIST =770 LBS
2. FLUSH RECESSED, TYPE G
3. CEILING HEIGHT = 9' - 0"
4. ATTACHMENT TYPE = I-BEAM
SPAN = 5' - 0"
5. ADJUST END STOPS TO AVOID BOOM

KEY

-  Hoist Transformer
-  Ceiling bracket, Extended
-  Stabilizers
-  B rail
-  Hoist

ACCURATE TO 4" BASED
ON PDF CONVERSION

Revision Schedule

Date	Issued by	Number

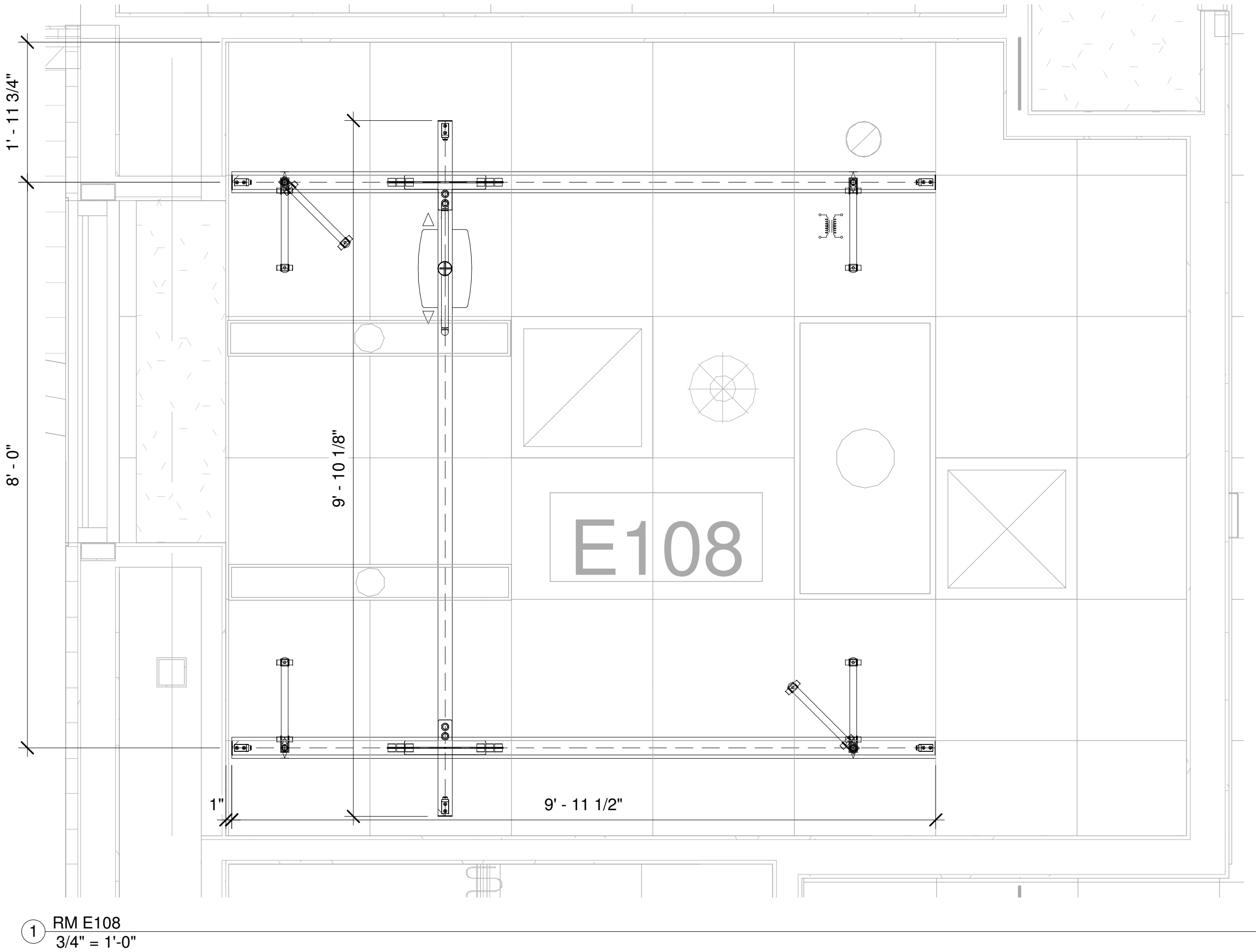
DATE:	DRAWN BY:
07/26/2022	KCA

APPROVED BY:

PROJECT NAME:
Stratton ED

SHEET DESCRIPTION:
RM E108

SHEET NO:
GUL107



1 RM E108
3/4" = 1'-0"

B-RAIL SPAN LIMIT BETWEEN SUPPORTS IS 11' - 5" FOR 1100 LBS



Guldmann Inc.
14401 McCormick Drive
Tampa FL, 33626 Unit A
Toll Free: 1(800)-664-8834
Fax: 1(813)-880-9556
Email: info@Guldmann.net

NOTES

- 1. HOIST = 1100 LBS
- 2. FLUSH RECESSED, TYPE G
- 3. CEILING HEIGHT = 9' - 0"
- 4. ATTACHMENT TYPE = I-BEAM
SPAN = 5' - 0"
- 5. ADJUST END STOPS TO AVOID BOOM

KEY

- Hoist Transformer
- Ceiling bracket, Standard
- Ceiling bracket, Extended
- Stabilizers
- Trolley Cut-Out
- B rail
- Hoist

ACCURATE TO 4" BASED
ON PDF CONVERSION

Revision Schedule

Date	Issued by	Number

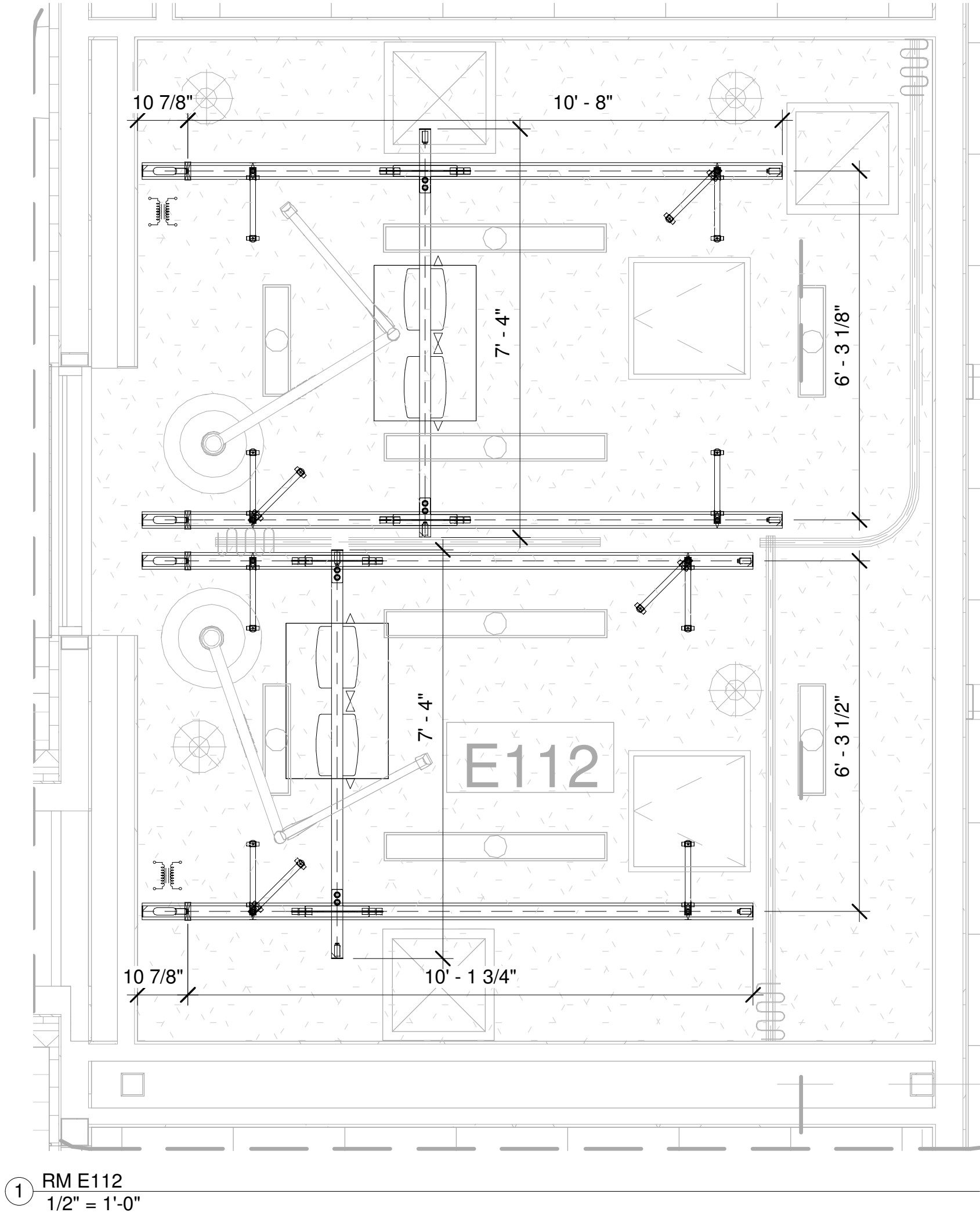
DATE:	DRAWN BY:
07/26/2022	KCA

APPROVED BY:

PROJECT NAME:
Stratton ED

SHEET DESCRIPTION:
RM E112

SHEET NO:
GUL108



① RM E112
1/2" = 1'-0"

B-RAIL SPAN LIMIT BETWEEN SUPPORTS IS 11' - 5" FOR 1100 LBS



Guldmann Inc.
14401 McCormick Drive
Tampa FL, 33626 Unit A
Toll Free: 1(800)-664-8834
Fax: 1(813)-880-9556
Email: info@Guldmann.net

NOTES

- 1. HOIST =1100 LBS
- 2. FLUSH RECESSED, TYPE G
- 3. CEILING HEIGHT = 9' - 0"
- 4. ATTACHMENT TYPE = I-BEAM
SPAN = 5' - 0"
- 5. ADJUST END STOPS TO AVOID BOOM

KEY

- Hoist Transformer
- Ceiling bracket, Extended
- Stabilizers
- B rail
- Hoist

ACCURATE TO 4" BASED
ON PDF CONVERSION

Revision Schedule

Date	Issued by	Number

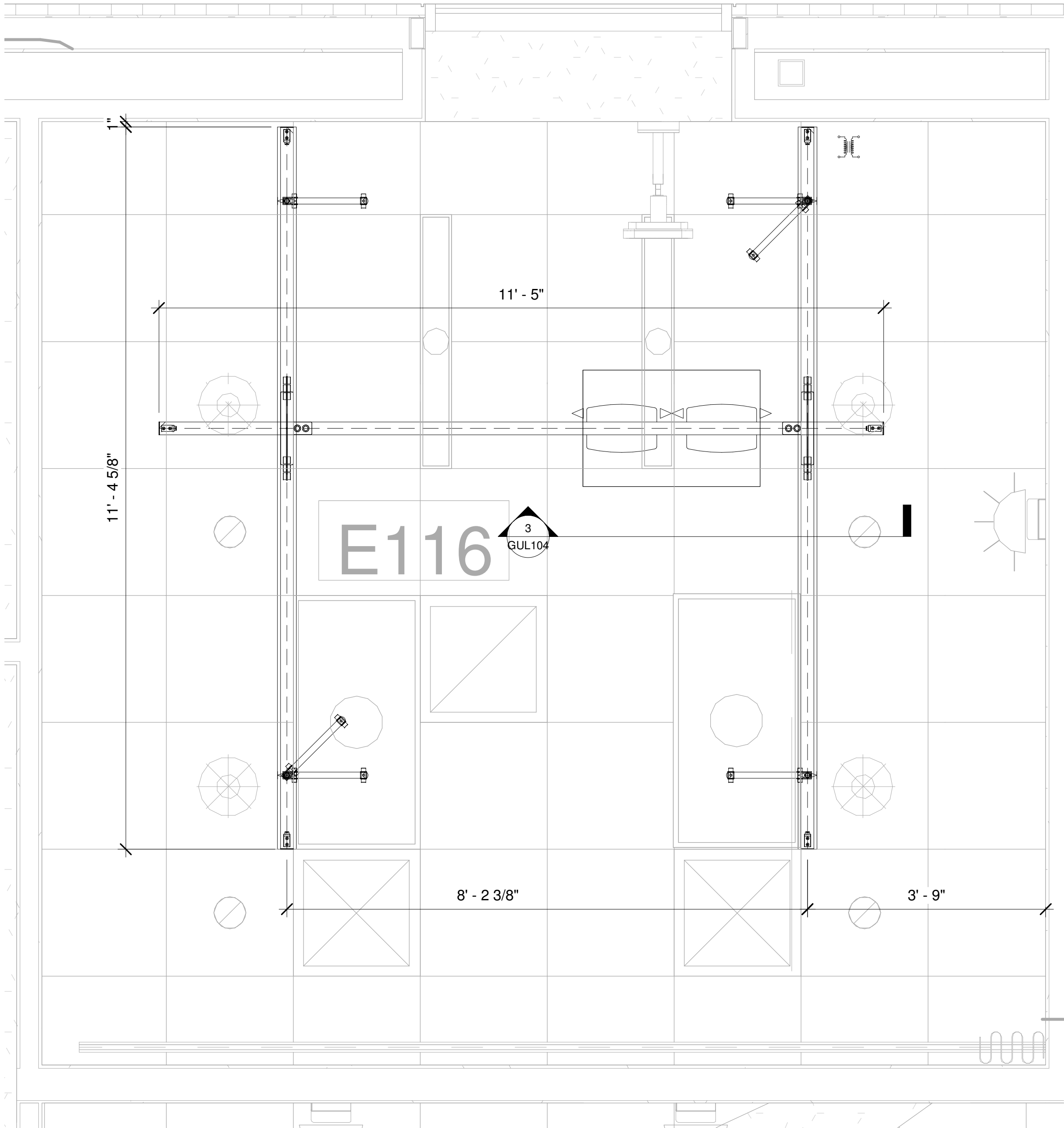
DATE: 07/26/2022
DRAWN BY: KCA

APPROVED BY:

PROJECT NAME: Stratton ED

SHEET DESCRIPTION: RM E116

SHEET NO: GUL109



1 RM E116
3/4" = 1'-0"



Guldmann Inc.
14401 McCormick Drive
Tampa FL, 33626 Unit A
Toll Free: 1(800)-664-8834
Fax: 1(813)-880-9556
Email: info@Guldmann.net

NOTES

- 1. HOIST =770 LBS
- 2. FLUSH RECESSED, TYPE G
- 3. CEILING HEIGHT = 9' - 0"
- 4. ATTACHMENT TYPE = I-BEAM
SPAN = 5' - 0"
- 5. ADJUST END STOPS TO AVOID BOOM

KEY

- Hoist Transformer
- Ceiling bracket, Extended
- Stabilizers
- B rail
- Hoist

ACCURATE TO 4" BASED
ON PDF CONVERSION

Revision Schedule

Date	Issued by	Number

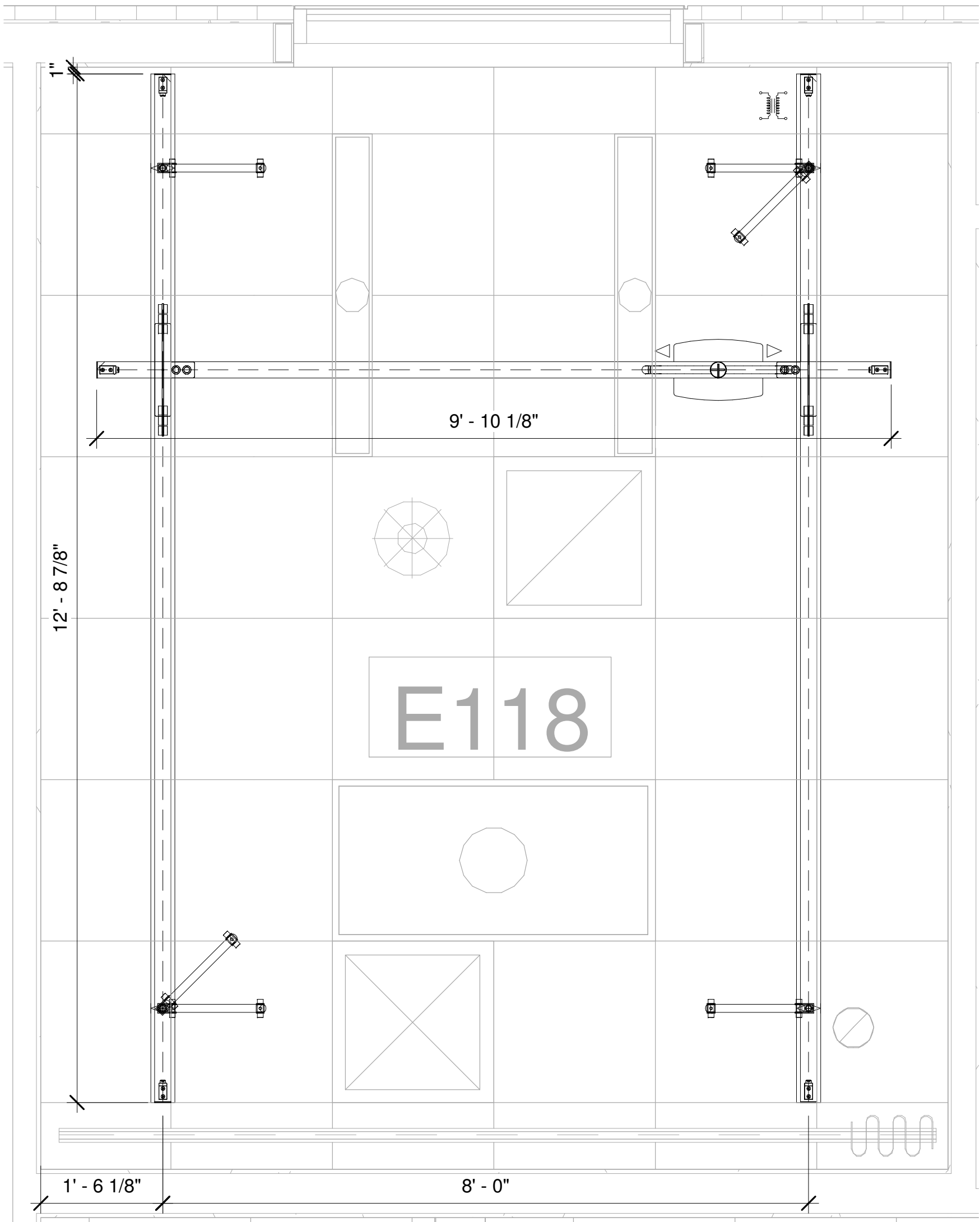
DATE:	DRAWN BY:
07/26/2022	KCA

APPROVED BY:

PROJECT NAME:
Stratton ED

SHEET DESCRIPTION:
RM E118

SHEET NO:
GUL110



① RM E118
3/4" = 1'-0"



Guldmann Inc.
14401 McCormick Drive
Tampa FL, 33626 Unit A
Toll Free: 1(800)-664-8834
Fax: 1(813)-880-9556
Email: info@Guldmann.net

NOTES

- 1. HOIST =770 LBS
- 2. FLUSH RECESSED, TYPE G
- 3. CEILING HEIGHT = 9' - 0"
- 4. ATTACHMENT TYPE = I-BEAM
SPAN = 5' - 0"
- 5. ADJUST END STOPS TO AVOID BOOM

KEY

- Hoist Transformer
- Ceiling bracket, Extended
- Stabilizers
- B rail
- Hoist

ACCURATE TO 4" BASED
ON PDF CONVERSION

Revision Schedule

Date	Issued by	Number

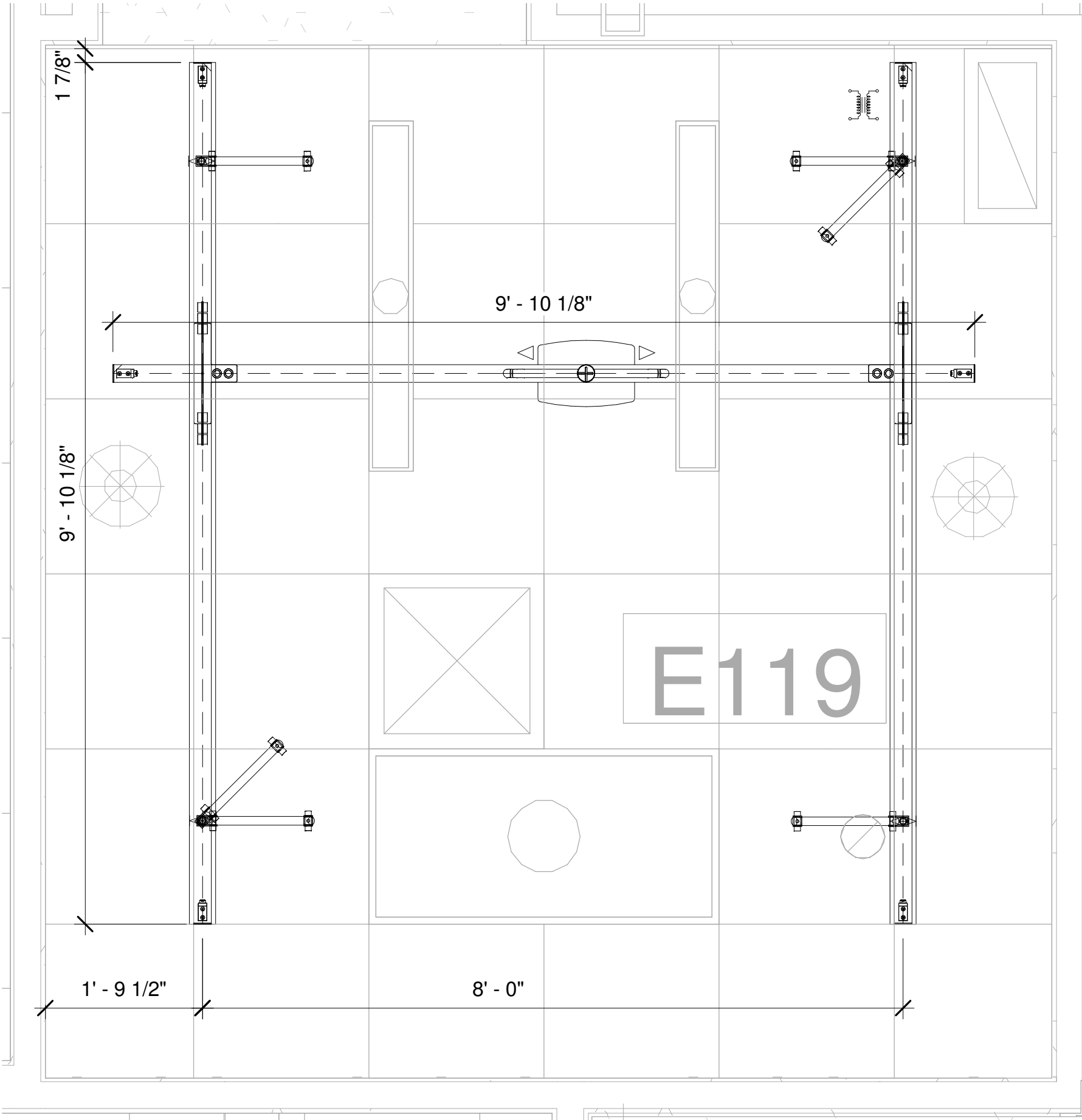
DATE:	DRAWN BY:
07/26/2022	KCA

APPROVED BY:

PROJECT NAME:
Stratton ED

SHEET DESCRIPTION:
RM E119

SHEET NO:
GUL111



1 RM E119
3/4" = 1'-0"

SEE 3/GUL102 FOR RAIL SPANS & ADDITIONAL DIMENSIONS

REFERENCE ROOM (2):
E121 - E122



Guldmann Inc.
14401 McCormick Drive
Tampa FL, 33626 Unit A
Toll Free: 1(800)-664-8834
Fax: 1(813)-880-9556
Email: info@Guldmann.net

NOTES

- 1. HOIST =770 LBS
- 2. FLUSH RECESSED, TYPE G
- 3. CEILING HEIGHT = 9' - 0"
- 4. ATTACHMENT TYPE = I-BEAM
SPAN = 5' - 0"
- 5. ADJUST END STOPS TO AVOID BOOM

KEY

- Hoist Transformer
- Ceiling bracket, Extended
- Stabilizers
- B rail
- Hoist

ACCURATE TO 4" BASED
ON PDF CONVERSION

Revision Schedule

Date	Issued by	Number

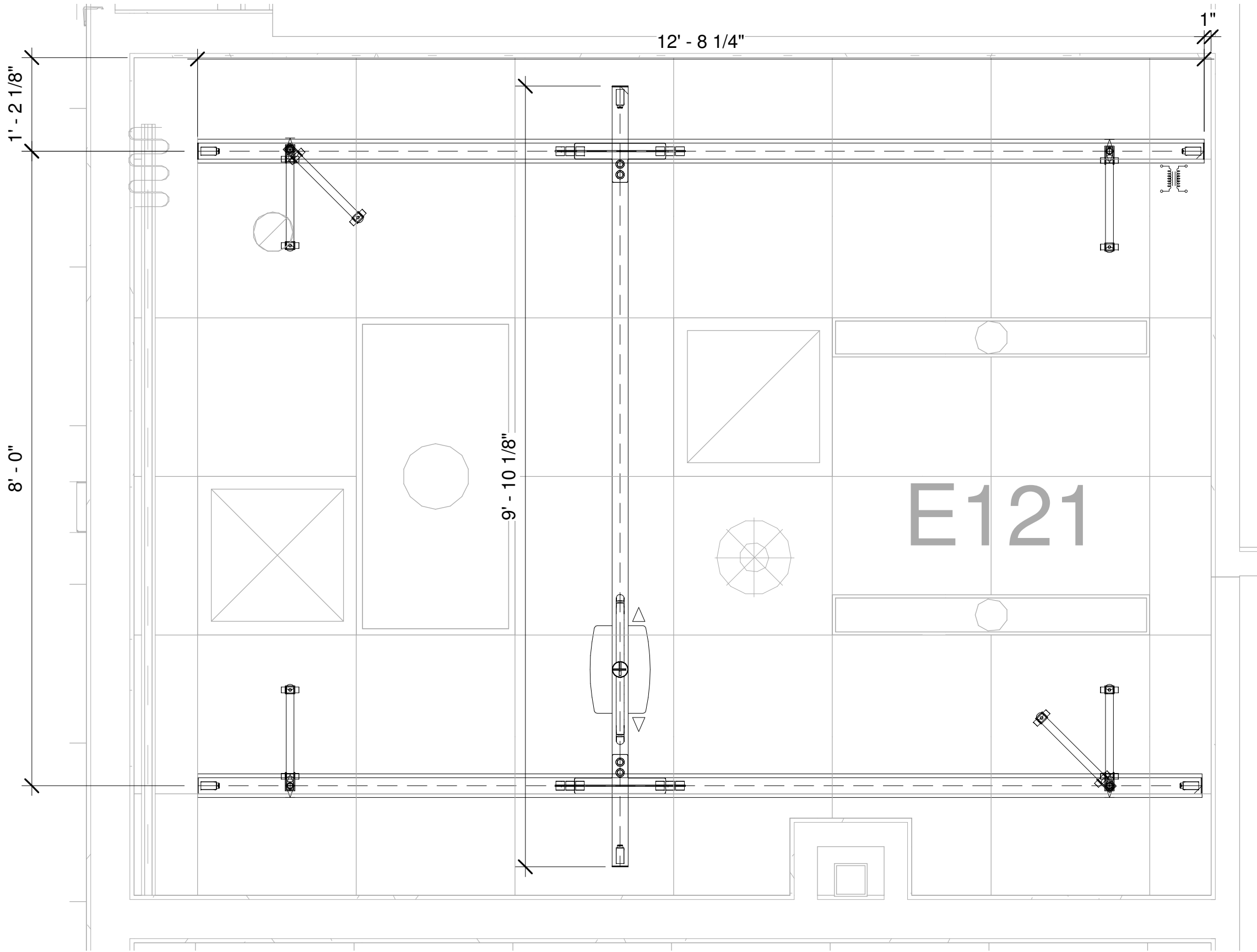
DATE:	DRAWN BY:
07/26/2022	KCA

APPROVED BY:

PROJECT NAME:
Stratton ED

SHEET DESCRIPTION:
RM E121

SHEET NO:
GUL112



1 RM E121
3/4" = 1'-0"

REFERENCE ROOM (2):
E123 - E124



Guldmann Inc.
14401 McCormick Drive
Tampa FL, 33626 Unit A
Toll Free: 1(800)-664-8834
Fax: 1(813)-880-9556
Email: info@Guldmann.net

NOTES

- 1. HOIST =770 LBS
- 2. FLUSH RECESSED, TYPE G
- 3. CEILING HEIGHT = 9' - 6"
- 4. ATTACHMENT TYPE = I-BEAM
SPAN = 5' - 0"
- 5. ADJUST END STOPS TO AVOID BOOM

KEY

- Hoist Transformer
- Ceiling bracket, Extended
- Stabilizers
- B rail
- Hoist

ACCURATE TO 4" BASED
ON PDF CONVERSION

Revision Schedule

Date	Issued by	Number

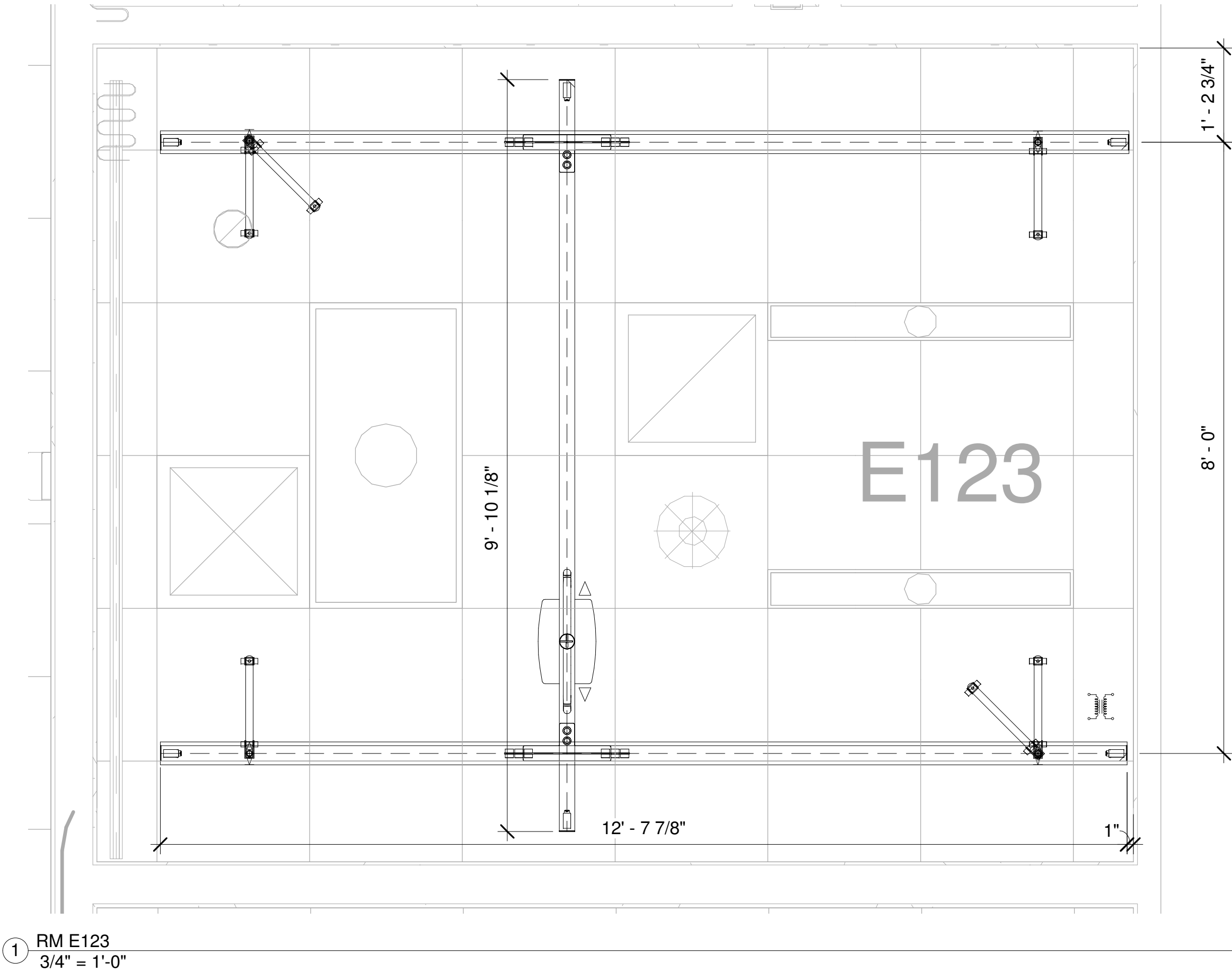
DATE:	DRAWN BY:
07/26/2022	KCA

APPROVED BY:

PROJECT NAME:
Stratton ED

SHEET DESCRIPTION:
RM E123

SHEET NO:
GUL113



SEE 3/GUL102 FOR RAIL SPANS & ADDITIONAL DIMENSIONS



Guldmann Inc.
14401 McCormick Drive
Tampa FL, 33626 Unit A
Toll Free: 1(800)-664-8834
Fax: 1(813)-880-9556
Email: info@Guldmann.net

NOTES

- 1. HOIST =770 LBS
- 2. FLUSH RECESSED, TYPE G
- 3. CEILING HEIGHT = 9' - 0"
- 4. ATTACHMENT TYPE = I-BEAM
SPAN = 5' - 0"
- 5. ADJUST END STOPS TO AVOID BOOM

KEY

- Hoist Transformer
- Ceiling bracket, Extended
- Stabilizers
- B rail
- Hoist

ACCURATE TO 4" BASED
ON PDF CONVERSION

Revision Schedule

Date	Issued by	Number

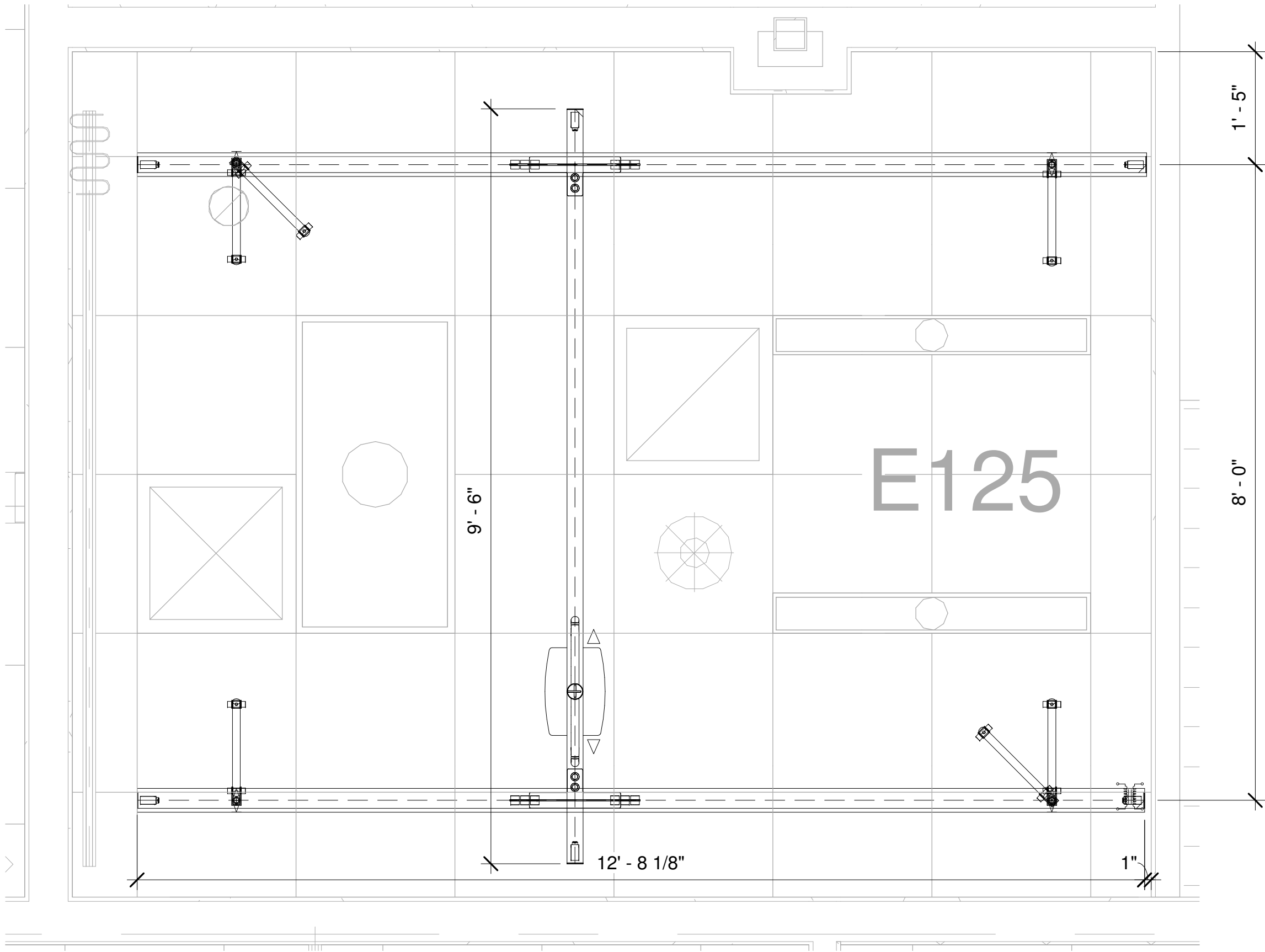
DATE:	DRAWN BY:
07/26/2022	KCA

APPROVED BY:

PROJECT NAME:
Stratton ED

SHEET DESCRIPTION:
RM E125

SHEET NO:
GUL114



1 RM E125
3/4" = 1'-0"



Guldmann Inc.
14401 McCormick Drive
Tampa FL, 33626 Unit A
Toll Free: 1(800)-664-8834
Fax: 1(813)-880-9556
Email: info@Guldmann.net

NOTES

- 1. HOIST =770 LBS
- 2. FLUSH RECESSED, TYPE G
- 3. CEILING HEIGHT = 9' - 6"
- 4. ATTACHMENT TYPE = I-BEAM
SPAN = 5' - 0"
- 5. ADJUST END STOPS TO AVOID BOOM

KEY

- Hoist Transformer
- Ceiling bracket, Extended
- Stabilizers
- B rail
- Hoist

ACCURATE TO 4" BASED
ON PDF CONVERSION

Revision Schedule

Date	Issued by	Number

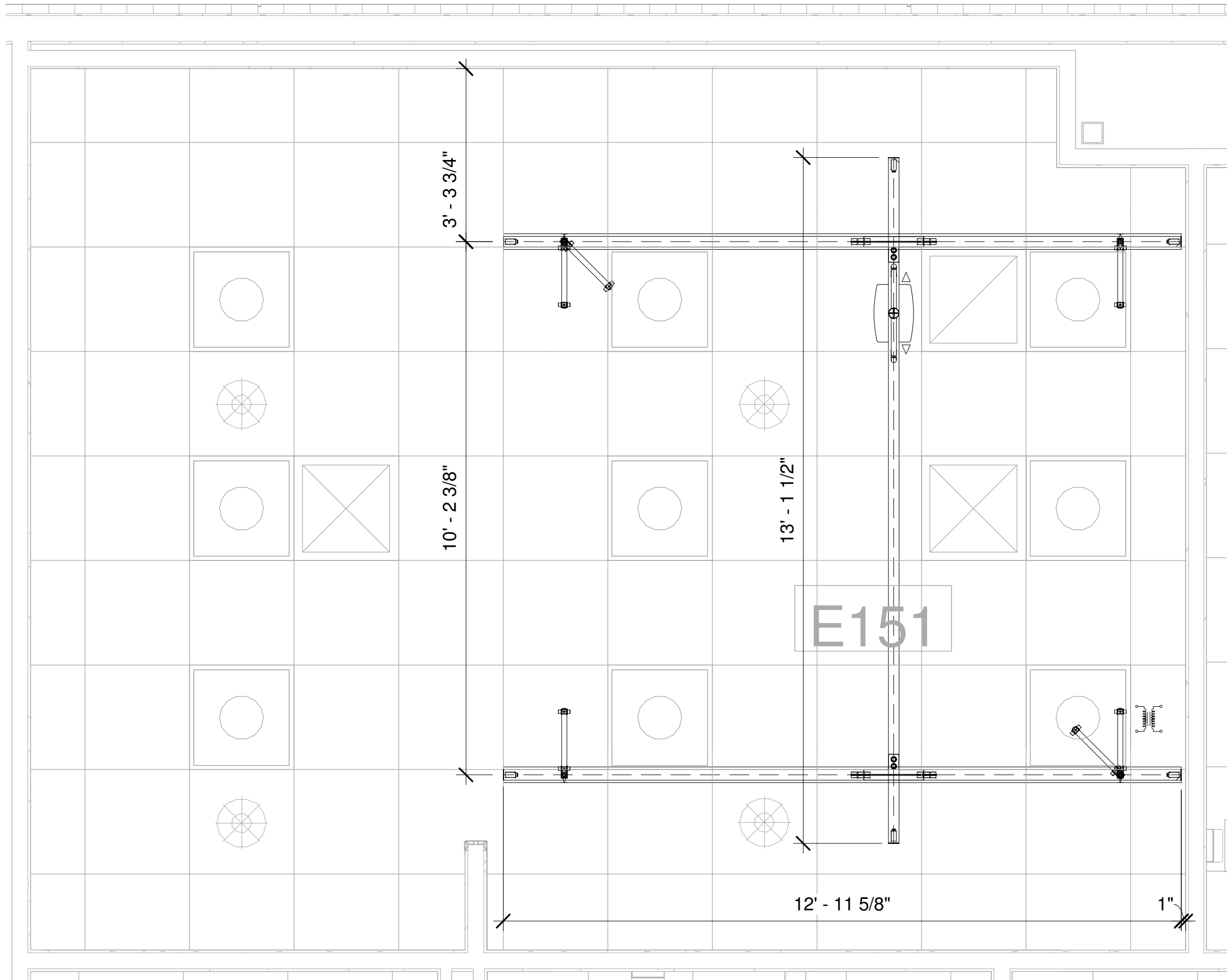
DATE:	DRAWN BY:
07/26/2022	KCA

APPROVED BY:

PROJECT NAME:
Stratton ED

SHEET DESCRIPTION:
RM E151

SHEET NO:
GUL115



1 RM E151
1/2" = 1'-0"

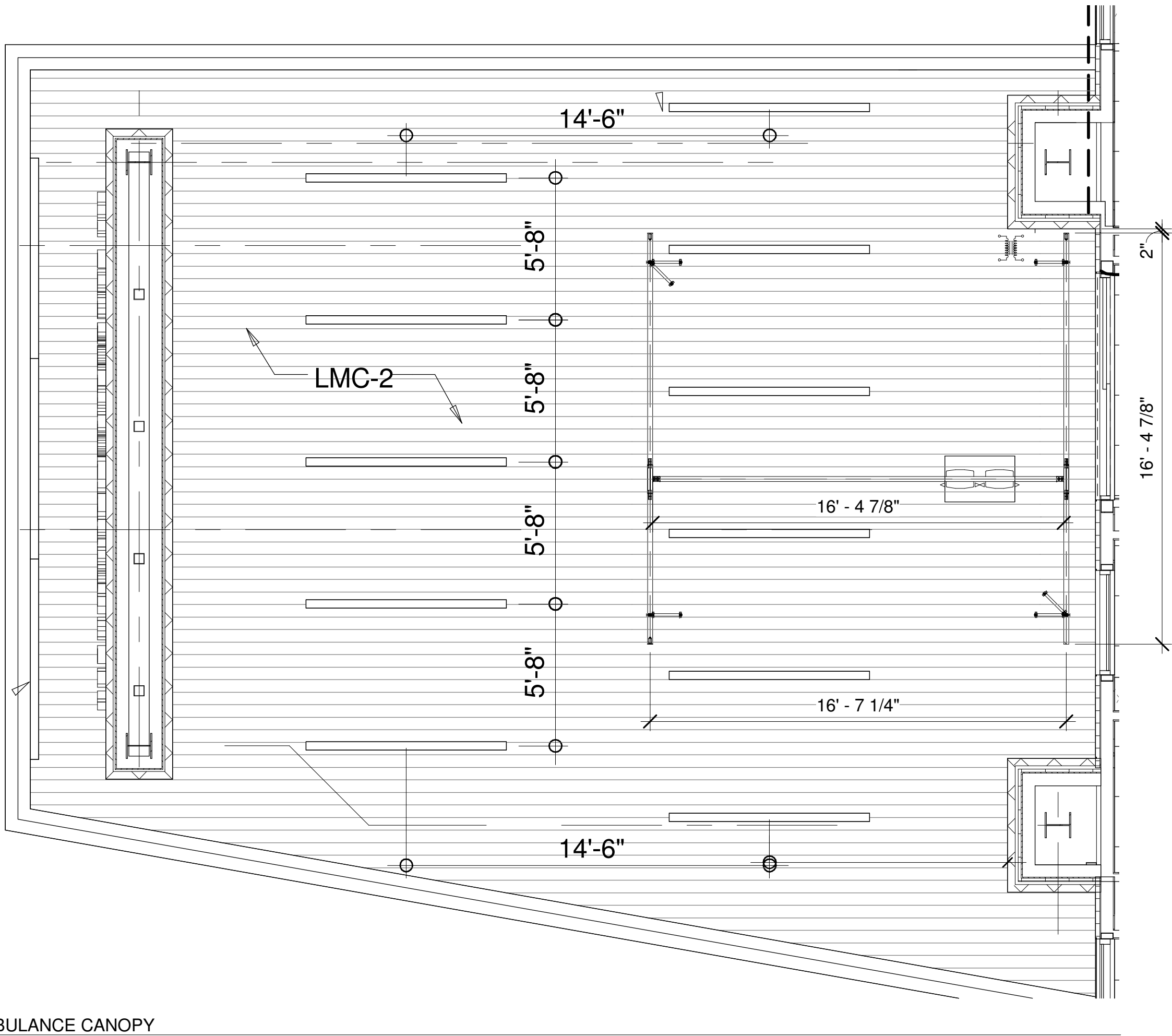
VERIFY SYSTEM SIZE AND LOCATION IN FIELD
VERIFY CEILING AND DECK HEIGHTS



Guldmann Inc.
14401 McCormick Drive
Tampa FL, 33626 Unit A
Toll Free: 1(800)-664-8834
Fax: 1(813)-880-9556
Email: info@Guldmann.net

NOTES

- 1. HOIST = 1100 LBS
- 2. NON-RECESSED, TYPE C
- 3. CEILING HEIGHT = UNKNOWN
AFF TO DECK = UNKNOWN
- 4. ATTACHMENT TYPE = I-BEAM
SPAN = 5' - 0"



KEY

- Hoist Transformer
- Ceiling bracket, Extended
- Stabilizers
- C rail
- Hoist

ACCURATE TO 4" BASED
ON PDF CONVERSION

Revision Schedule

Date	Issued by	Number

DATE:	DRAWN BY:
07/26/2022	KCA

APPROVED BY:

PROJECT NAME:
Stratton ED

SHEET DESCRIPTION:
AMBULANCE CANOPY

SHEET NO:
GUL116