

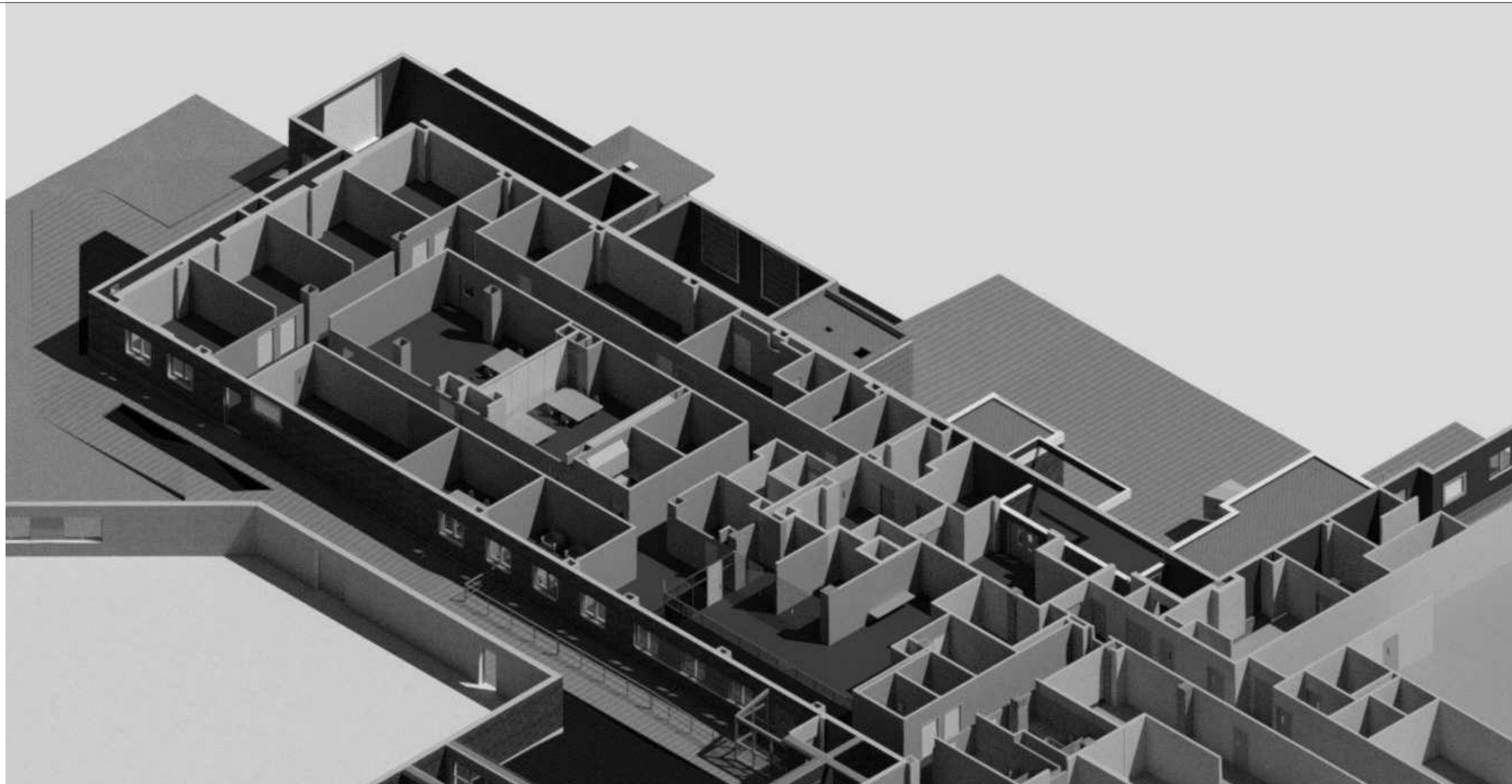
PHASE 2 - EDUCATION BUILDING RENOVATION

FORT HARRISON VA MEDICAL CENTER

3687 VETERANS DRIVE FORT HARRISON, MT 59636

VAMC PROJECT #436-114

INTERIOR PERSPECTIVE

A detailed 3D perspective rendering of a building's interior layout. The view is from an elevated angle, looking down into the structure. The building is composed of numerous interconnected rooms of varying sizes, some with internal partitions. Corridors and service areas are visible, connecting the different functional spaces. The rendering uses a grayscale color scheme, emphasizing the geometric forms and spatial organization of the architecture. The walls, floors, and ceiling are represented by different shades of gray, creating a sense of depth and volume. The overall impression is one of a complex, multi-functional interior space designed for a specific purpose.

SHEET NUMBER	SHEET NAME
GI001-P2	PHASE 2 COVER SHEET
GI006-P2	LIFE SAFETY CODE ANALYSIS
G-101-P2	LIFE SAFETY FIRST FLOOR PLAN
S-501-P2	OPERABLE WALL SUPPORT PLANS AND DETAILS
AD101-P2	DEMOLITION PLAN
A-102-P2	FIRST FLOOR ARCHITECTURAL PLAN
A-103-P2	FIRST FLOOR REFLECTED CEILING PLAN
A-104-P2	FIRST FLOOR FINISH PLAN
A-201-P2	INTERIOR DOOR AND WINDOW TYPES AND FRAMES
A-202-P2	INTERIOR ELEVATIONS
A-203-P2	INTERIOR ELEVATIONS
A-401-P2	ENLARGED PLANS
A-602-P2	DOOR SCHEDULE
A-603-P2	FINISH LEGEND AND SCHEDULE
FP101-P2	FIRST FLOOR FIRE SPRINKLER
FP102-P2	FIRST FLOOR FIRE ALARM
PD101-P2	PLUMBING DEMOLITION PLAN - FIRST FLOOR WEST
PD102-P2	PLUMBING DEMOLITION PLAN - FIRST FLOOR EAST
PP101-P2	PLUMBING PLAN - FIRST FLOOR WEST
PP102-P2	PLUMBING PLAN - FIRST FLOOR EAST
MD101-P2	MECHANICAL DEMOLITION PLAN - FIRST FLOOR WEST
MD102-P2	MECHANICAL DEMOLITION PLAN - FIRST FLOOR EAST
MH101-P2	MECHANICAL HVAC PLAN - FIRST FLOOR WEST
MH102-P2	MECHANICAL HVAC PLAN - FIRST FLOOR EAST
MP101-P2	MECHANICAL PIPING PLAN - FIRST FLOOR WEST

[illegible][illegible]C:\Revit 2018\164091_A18_VAFH-Arch_cridenour\SFA4N.rvt

Page 1 of 5

VEG 4.11

OCCUPANT LOAD	
CONFERENCE/CLASSROOM	101
SMALL CONFERENCE/ SMALL CLASSROOM	79
BUSINESS	29
COMPUTER LAB/ SIMULATION LAB	26
SUPPORT (BOH)	10
WAITING	12
TOTAL	257

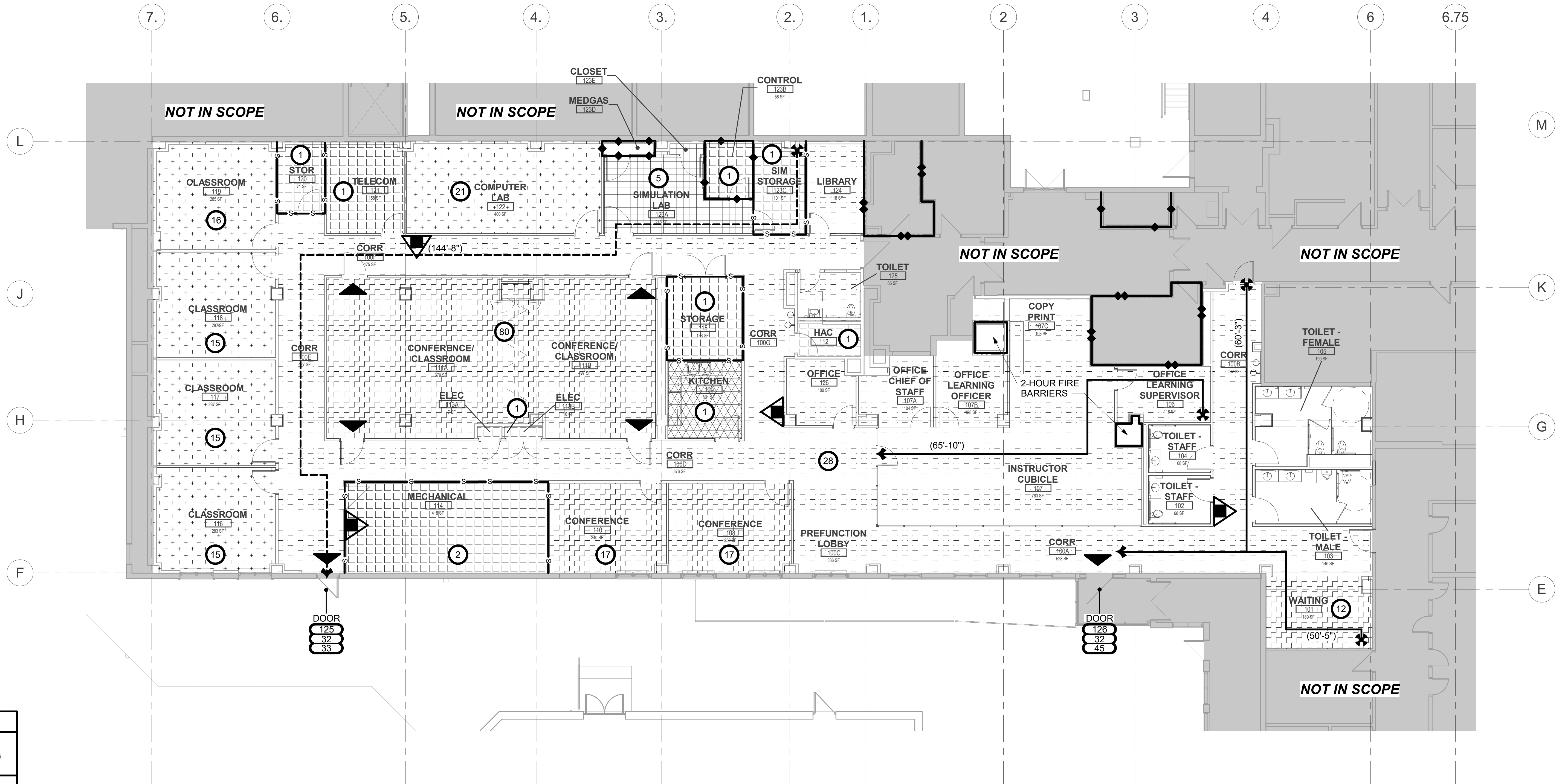
FLOOR AREA USE LEGEND		
USE	SYMBOL	OCCUPANT LOAD FACTOR (FT ² /PERSON)
ASSEMBLY TABLES & CHAIRS		15
BUSINESS		150
CLASSROOM		20
MECHANICAL / ELECTRICAL / STORAGE		300
TRAINING		50

LIFE SAFETY LEGEND	
	EGRESS DOOR WITH EXIT SIGN
	EXIT DOORS SWING IN THE DIRECTION OF EGRESS AND HAVE EXIT SIGN WITH PANIC HARDWARE
	DIRECTION OF EGRESS WITH POPULATION
	TRAVEL DISTANCE
	COMMON PATH OF TRAVEL
	INDICATES NUMBER OF OCCUPANTS
	FIRE EXTINGUISHER, MINIMUM 2A:10B:C EXTINGUISHER
	DOORS OR STAIRS
	NUMBER OF OCCUPANTS
	REQUIRED WIDTH (INCHES)
	AVAILABLE WIDTH (INCHES)

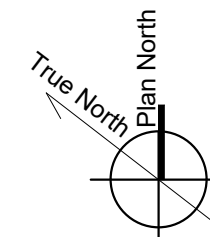
WALL TYPE LEGEND				
WALL TYPE	FIRE RATING (HOUR)	OPENING FIRE RATING (HOUR)	DAMPERS F = FIRE S = SMOKE	WALL PENETRATION RATING (HOUR)
	0	SELF-CLOSING TIGHT FITTING	S IN AIR TRANSFER WALL OPENINGS	0 WITH TIGHT INSTALLATION
	1	3/4	WALLS: F IN DUCTED AND UNDUCTED OPENINGS.	1
	2	1 1/2	WALLS & SHAFTS: F IN DUCTED AND UNDUCTED OPENINGS.	2

GENERAL NOTE:

1. CONFERENCE/CLASSROOMS 111A AND 109 ARE DEFINED AS AN ASSEMBLY SPACE AND MAKE UP 15% OF THE RENOVATED AREA. IT IS ASSUMED THAT THE ASSEMBLY SPACES ON THE ENTIRE FLOOR REMAIN BELOW THE 10% THRESHOLD ALLOWED FOR ACCESSORY OCCUPANCIES. EXISTING PLANS FOR THE ENTIRE STORY NEED TO BE EVALUATED TO CONFIRM THAT THE ASSEMBLY AREA FOR THIS STORY IS WITHIN THE ACCESSORY OCCUPANCY LIMITS.



0 4' 8' 16'
SCALE: 1/8" = 1'-0"



CONSULTANTS:



ARCHITECT/ENGINEER OF RECORD:



750 W HAMPDEN AVE
SUITE 300
ENGLEWOOD, CO 80110
(720) 550-6307
WWW.VALHALLAENGINEERING.COM

STAMP:



Drawing Title

LIFE SAFETY FIRST FLOOR PLAN

Approved: Project Director

Phase

100% CONSTRUCTION DOCUMENTS

Project Title

OUTPATIENT MENTAL HEALTH / EDUCATION ADDITION

Location

3687 Veterans Drive, Fort Harrison, MT 59636

Issue Date

08/05/2020

Checked

CTA

Drawn

FSC

Project Number

436-114

Building Number

154

Drawing Number

G-101-P2