

1

2

3

4

5

6

7

8

9

10

G

F

E

D

C

B

A

GENERAL ELECTRONIC SECURITY SYSTEM NOTES

GENERAL SPECIAL SYSTEMS

THE GENERAL CONTRACTOR SHALL PROVIDE A COMPLETION SCHEDULE, BROKEN DOWN BY VARIOUS CONSTRUCTION PHASES. THE CONTRACTOR SHALL COORDINATE TURNOVER WITH VENDORS, AND SHALL TURNOVER AREAS WITH ADEQUATE TIME FOR VENDOR FINISH WORK. THE CONTRACTOR SHALL BE RESPONSIBLE FOR ANY EXTRA VENDOR COST RESULTING FROM INCORRECT SYSTEMS ROUGH-IN.

THE GENERAL CONTRACTOR SHALL PROVIDE IN-WALL REINFORCEMENT AS NECESSARY FOR ALL SYSTEMS CABINETS, SHELVES, BRACKETS, FURNITURE MOUNTS, ETC.. AND SHALL MOUNT CABINETS, SHELVES, BRACKETS, AND FURNITURE MOUNTS IN ACCORDANCE WITH DRAWINGS, VENDOR SUBMITTALS, AND ALL APPLICABLE CODES.

THE CONTRACTOR SHALL COORDINATE AND PROVIDE ALL REQUIRED RACEWAY SYSTEMS FOR ALL ELECTRONIC SECURITY SYSTEMS INCLUDING CONDUIT WITH PULL STRING, JUNCTION BOXES, GROUNDING, BACKBOARDS, POWER CONNECTIONS, ETC. THE CONTRACTOR SHALL COORDINATE ALL ROUGH-IN, BOX SIZES AND CONFIGURATIONS, CONDUIT SIZES AND ROUTING WITH THE OWNER'S SECURITY VENDOR PRIOR TO INSTALLATION OF THE RACEWAY SYSTEM.

CAA BOUNDARY PENETRATION NOTE:

METALLIC CONDUIT: PROVIDE A DIELECTRIC UNION INSIDE THE CAA BOUNDARY ADJACENT TO THE PENETRATION OR GROUND THE CONDUIT WITHIN 6 INCH OF THE PERIMETER PENETRATION USING A NO. 4 COPPER WIRE CONNECTED TO THE BUILDING GROUND.

METALLIC PLUMBING PIPE: PROVIDE A DIELECTRIC UNION INSIDE THE CAA BOUNDARY ADJACENT TO THE PENETRATION. IF DIELECTRIC UNIONS ARE NOT ALLOWED DUE TO LOCAL CODES, GROUND THE CONDUIT WITHIN 6 INCH OF THE PERIMETER PENETRATION USING A NO. 4 COPPER WIRE CONNECTED TO THE BUILDING GROUND.

METALLIC SPRINKLER (FIRE SUPPRESSION) PIPE: PROVIDE A UL LISTED DIELECTRIC UNION INSIDE THE CAA BOUNDARY ADJACENT TO THE PENETRATION OR GROUND THE PIPE WITHIN 6 INCH OF THE PERIMETER PENETRATION USING A NO. 4 COPPER WIRE CONNECTED TO THE BUILDING GROUND.

COPPER REFRIGERANT (HVAC) LINE: GROUND THE LINE WITHIN 6 INCH OF THE PERIMETER PENETRATION USING A NO. 4 COPPER WIRE CONNECTED TO THE BUILDING GROUND. MAINTAIN INTEGRITY OF REFRIGERANT LINE INSULATION.

LEGEND & ABBREVIATIONS

ACCESS CONTROL SYSTEM (RACEWAY INFRASTRUCTURE ONLY)

ACS

CR

EH

DC

ML

J

RTE

ACCESS CONTROL SYSTEM CONTROL PANEL

CARD READER

ELECTRIFIED HARDWARE

DOOR CONTACT

MAGNETIC LOCK

JUNCTION BOX

REQUEST TO EXIT

SEE TYPICAL SECURITY DOOR CONFIGURATION DETAIL ON SHEET TY501

----- CONTROLLED ACCESS AREA (CAA) BOUNDARY

INTRUSION DETECTION SYSTEM (RACEWAY INFRASTRUCTURE ONLY)

IDS

K

M

INTRUSION DETECTION SYSTEM CONTROL PANEL

ARM/DISARM KEYPAD

MOTION SENSOR, 360° PASSIVE INFRARED CEILING MOUNTED.

CCTV SYSTEM (RACEWAY INFRASTRUCTURE ONLY)

CCTV

CCTV DOME CAMERA

CLOSED CIRCUIT TELEVISION SYSTEM CONTROL PANEL

ABBREVIATIONS

AFF

AFG

ARA

BEP

BFG

C

CAA

EF

ETR

EXIST

FMCP

GND

IDS

MDF

MMFO

NEC

OSP

PNL

REQ'D

SMFO

TELE

TR

UON

WP

ABOVE FINISHED FLOOR

ABOVE FINISHED GRADE

AREA OF REFUGE ASSISTANCE

BUILDING ENTRANCE PROTECTOR

BELOW FINISHED GRADE

CONDUIT

CONTROLLED ACCESS AREA

ENTRANCE FACILITY

EXISTING TO REMAIN

EXISTING

FIRE ALARM/MASS NOTIFICATION CONTROL PANEL

GROUND

INTRUSION DETECTION SYSTEM

MAIN DISTRIBUTION FRAME

MULTIMODE FIBER OPTIC

NATIONAL ELECTRICAL CODE

OUTSIDE PLANT

PANEL

REQUIRED

SINGLE MODE FIBER OPTIC

TELEPHONE

TELECOMMUNICATIONS ROOM

UNLESS OTHERWISE NOTED

WEATHERPROOF

US Army Corps of Engineers®

ISSUE DATE: 08/15/2019

DESIGNED BY: CRW

DRAWN BY: MUF

CHECKED BY: MUF

SUBMITTED BY: CMT

SIZE: ANSI 'D'

SOLICITATION NO.: MURJ173000

PROJECT NO.: W91238-17-D-0001

U.S. ARMY CORPS OF ENGINEERS
NORFOLK DISTRICT
NORFOLK, VA

WSP
277 BENDIX ROAD
SUITE 300
VIRGINIA BEACH, VA 23462

HELMS AVE. JBLE
CYBER OPS FACILITY

LEGEND, NOTES AND ABBREVIATIONS

SHEET ID
TY001

Pace

COLLABORATIVE

TECHNICAL ELECTRICAL ENGINEERS

WWW.PACE-ENGINEERING.COM

COMMONWEALTH OF VIRGINIA

Martin H. Ford

MARTIN H. FORD

Lic. No. 048072

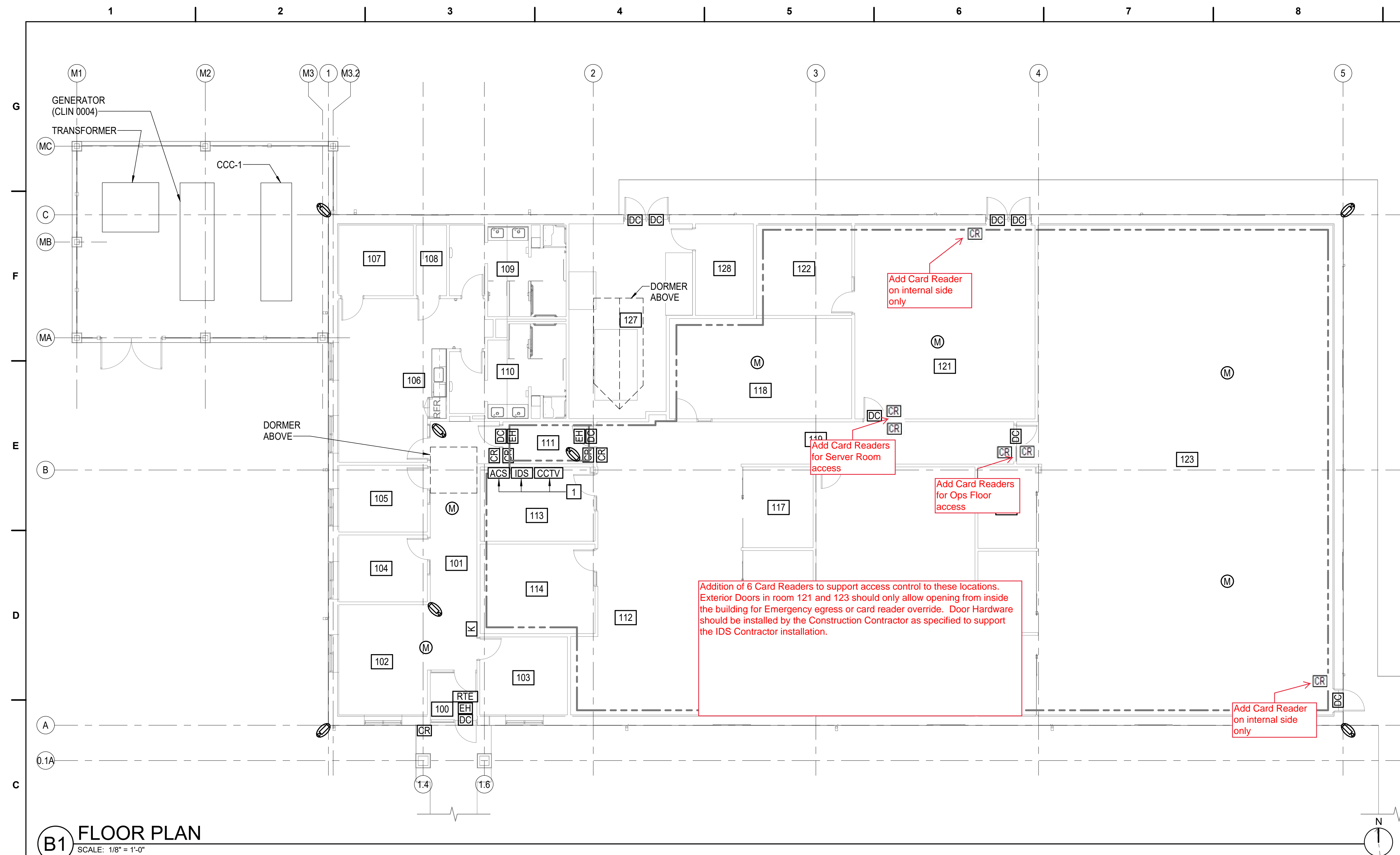
08/15/2019

PROFESSIONAL ENGINEER

DATE & TIME STAMP:
8/14/2019 1:56:01 PM

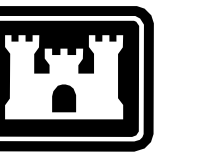
UNCLASSIFIED\\FOR OFFICIAL USE ONLY

RTA SUBMITTAL



ROOM SCHEDULE

100	VEST
101	CORRIDOR
102	CSS
103	COMMANDER
104	FIRST SERGEANT
105	SUPER
106	BREAK
107	COMM
108	JAN
109	WOMEN
110	MEN
111	MANTRAP
112	OPEN OFFICE
113	OSS
114	STDS AND EVAL
115	OFFICE
116	OFFICE
117	OFFICE
118	CONFERENCE
119	CORRIDOR
120	TRAINING
121	SERVER
122	CYBER SYSTEM MAINTENANCE
123	OPS FLOOR
124	MEETING
125	MEETING
126	OFFICE
127	MECH
128	ELEC
129	MECHANICAL YARD



**US Army Corps
of Engineers ®**

[illegible]

CRW	08/15/2019
DRAWN BY:	SOLICITATION NO.:
MUHJT79000	MUHJT79000
CHECKED BY:	PROJECT NO.:
MHE	W91236-17-D-0001
SUBMITTED BY:	
CMT	
SIZE:	
ANSI 'D'	
WSP 277 BENK ROAD SUITE 300 VIRGINIA BEACH, VA 23452	

FLOOR PLAN - SECURITY

SHEET ID

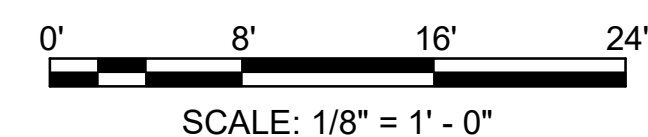
TY101

BIDDERS NOTE - CLIN 0003:

THE ELECTRONIC SECURITY SYSTEM (ACS, IDS & CCTV) EQUIPMENT, CABLING, INSTALLATION, TERMINATION AND TESTING WILL BE PROVIDED BY THE OWNERS SECURITY VENDOR UNDER CLIN 0003.

UNCLASSIFIED//FOR OFFICIAL USE ONLY

DATE & TIME STAMP:
8/14/2019 1:56:04 PM



RTA SUBMITTAL

