

9/24/2020 6:01:19 AM c:\bms\wsp-pb-us-pw-02\wsp_anthony.odonnell\d0219312\or-01802H16.dgn

Checked by:

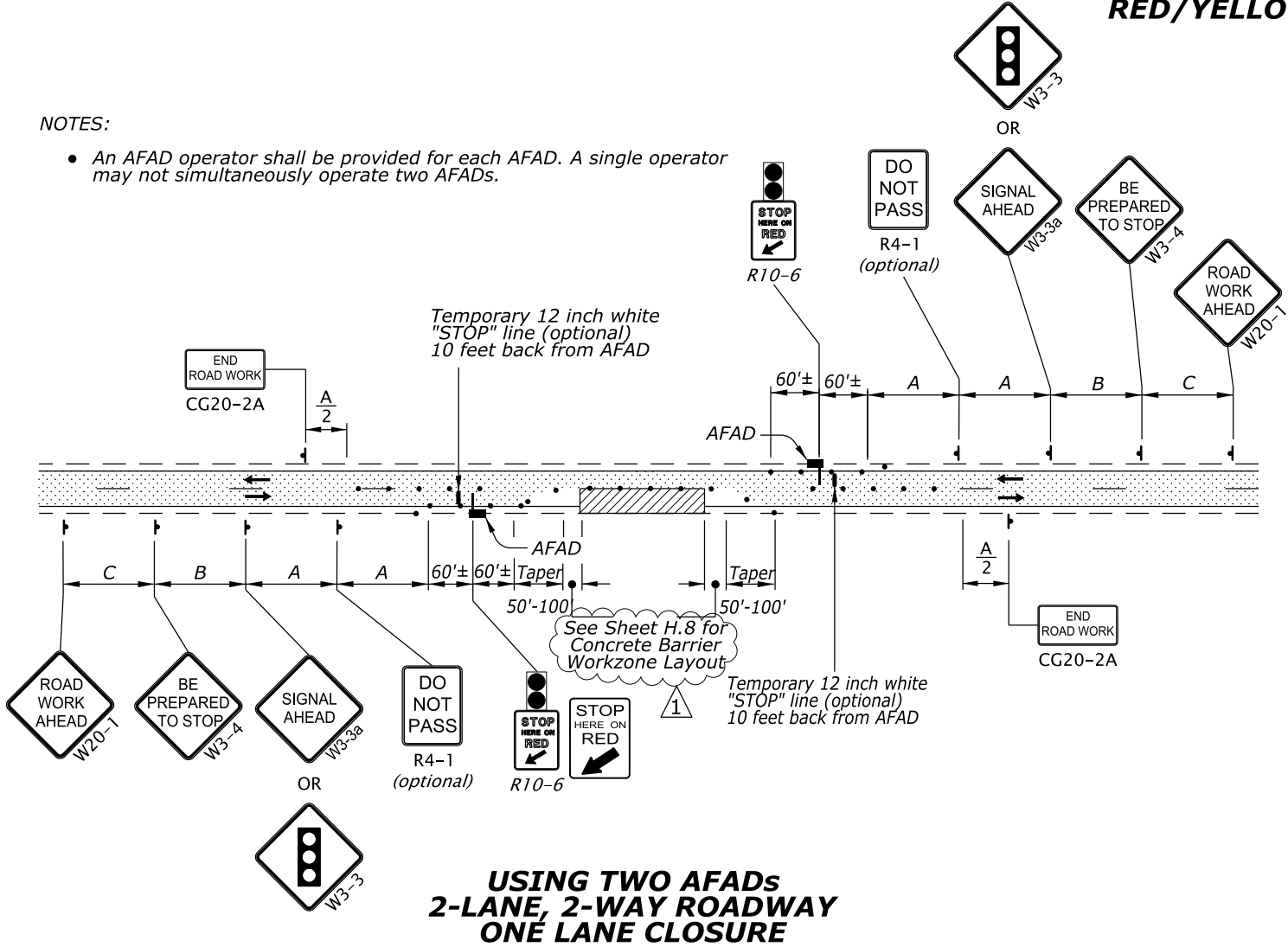
Designed by:

AUTOMATED FLAGGER ASSISTANCE DEVICE (AFAD)
RED/YELLOW LENS AFAD

STATE	PROJECT	SHEET NUMBER
OR	DOT 18(2)	H.16

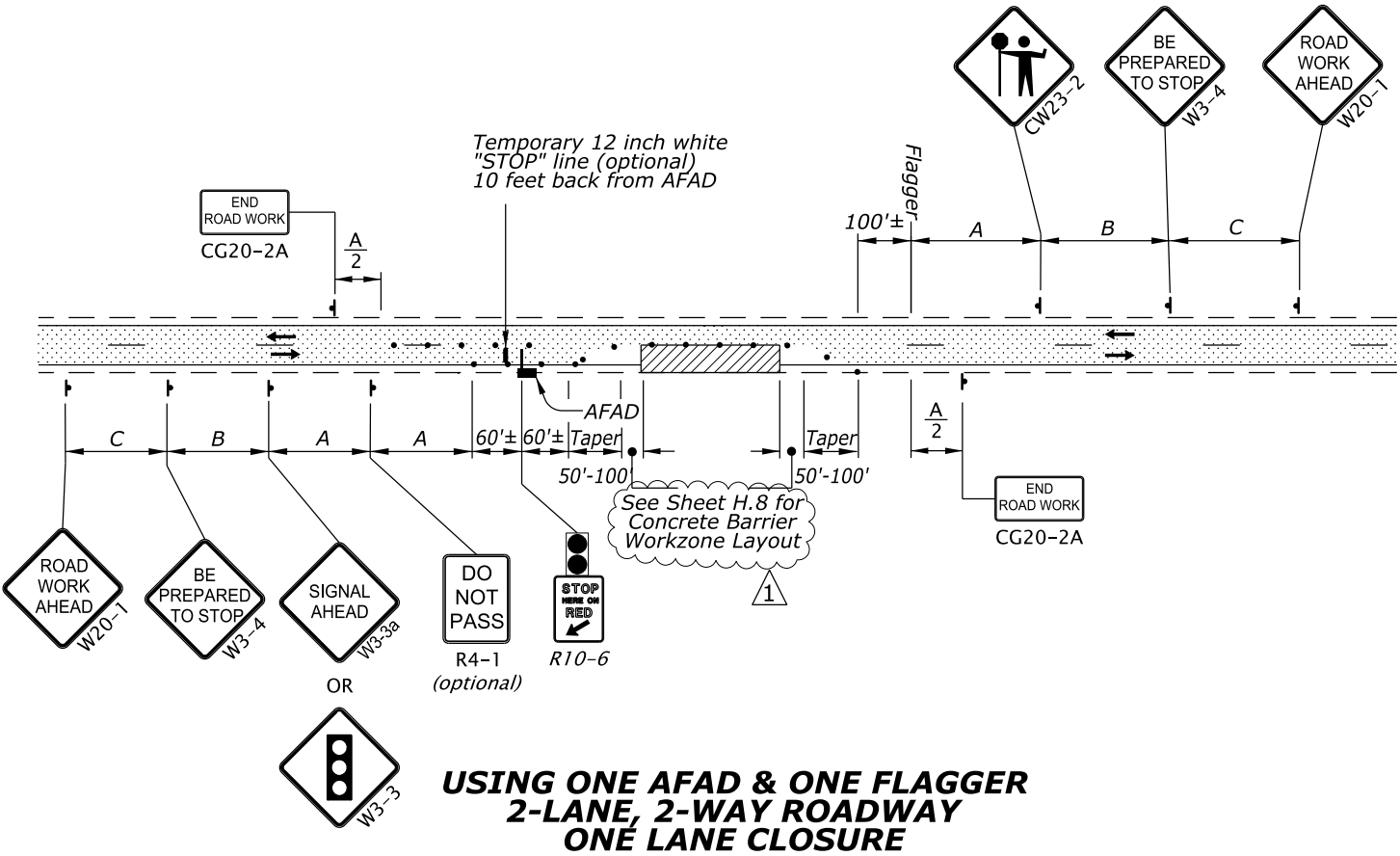
NOTES:

- An AFAD operator shall be provided for each AFAD. A single operator may not simultaneously operate two AFADs.



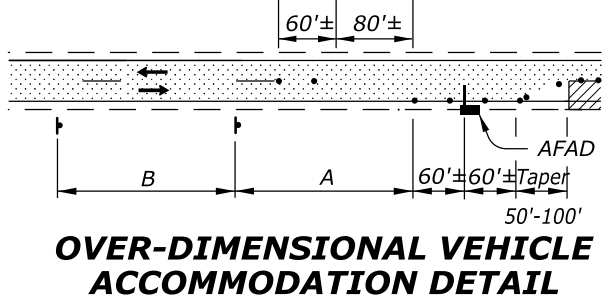
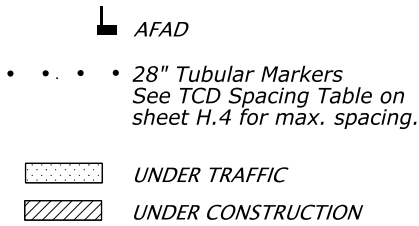
NOTES:

- The AFAD operator shall not flag traffic and operate an AFAD at the same time.



GENERAL NOTES FOR ALL DETAILS:

- Flagger station shall be delineated according to "FLAGGER STATION" detail shown on sheet H.4.
- Bottom of lens housing shall be a minimum of 7 ft. above surface when mounted on shoulder and at least 17 ft. above any portion of the travel lane.
- The gate arm shall cover at least one half of the approaching vehicle travel lane.
- Signing and other TCD installed in conjunction with the work area, shall move with the work area.
- Use 1/3 "L" taper for shoulder closure, where necessary.
- For Taper Length ("L") and Buffer Length ("B") shown on this sheet, use the "MINIMUM LENGTHS TABLE" shown on sheet H.4.
- The AFAD operator shall be a certified flagger who has been trained in the operation of the AFAD in use.
- Operator shall operate AFAD from a designated area. Designated area should maintain visual presence of the AFAD and should be at least 50' away from the AFAD and have an escape route available for the operator.
- Remove existing striping and install temporary striping as required.
- See "TRAFFIC CONTROL DEVICES (TCD) SPACING TABLE" on sheet H.4 for sign spacing A, B, and C.
- Cover existing passing lane signing (as directed by the CO)
- When extended traffic queues develop during AFAD operations, protect traffic by providing advance flaggers(s) and signing according to the "Extended Traffic Queues Detail" shown on sheet H.11.
- When AFAD is not in use for less than one work shift, turn off AFAD, or switch YELLOW lens to flashing mode, and cover or remove all accompanying signing.
- When AFAD is not in use for longer than one work shift, remove AFAD and all accompanying signing from the roadway.
- Do not use the AFAD to control more than one lane of approaching traffic.
- Use temporary pavement markings or a white portable rumble strip for temporary stop line. Remove temporary stop line when AFAD is no longer in use.
- Tubular markers along centerline placed in advance of AFAD to first sign are optional, unless the DO NOT PASS sign is used.



DRAWING BASED ON OREGON
STANDARD DETAIL DET4700

AUTOMATED FLAGGER ASSISTANCE
DEVICE (AFAD) DETAILS

1 Revised by Amendment A002