

LEGEND
(EXISTING DEPTHS)

Red	0 - 40.99
Green	41.00 - 41.99
White	>= 42.00

- NOTES:
- SEE SHEET C-001 FOR GENERAL INFORMATION.
 - SEE SHEET C-401 FOR PALMYRA COVE DISPOSAL AREA PLAN.
 - SEE SHEET C-301 AND C-302 FOR CHANNEL SECTIONS.

US Army Corps of Engineers
PHILADELPHIA DISTRICT

ISSUED BY: JMD	DESIGNED BY: JMD	ISSUED DATE: 11 APR 2023	CONTRACT NUMBER: W9120220003
DRAWN BY: DAN	CHECKED BY: DAN	DATE: 11 APR 2023	DESCRIPTION: CHANGED UNLABLED ACCEPTANCE SECTIONS

U.S. ARMY CORPS OF ENGINEERS
PHILADELPHIA DISTRICT

DELAWARE RIVER
PENNSYLVANIA TO TRENTON, NEW JERSEY
MAINTENANCE DREDGING
PLAN - STA. 65+822 TO STA. 73+093

SHEET NUMBER

C-109

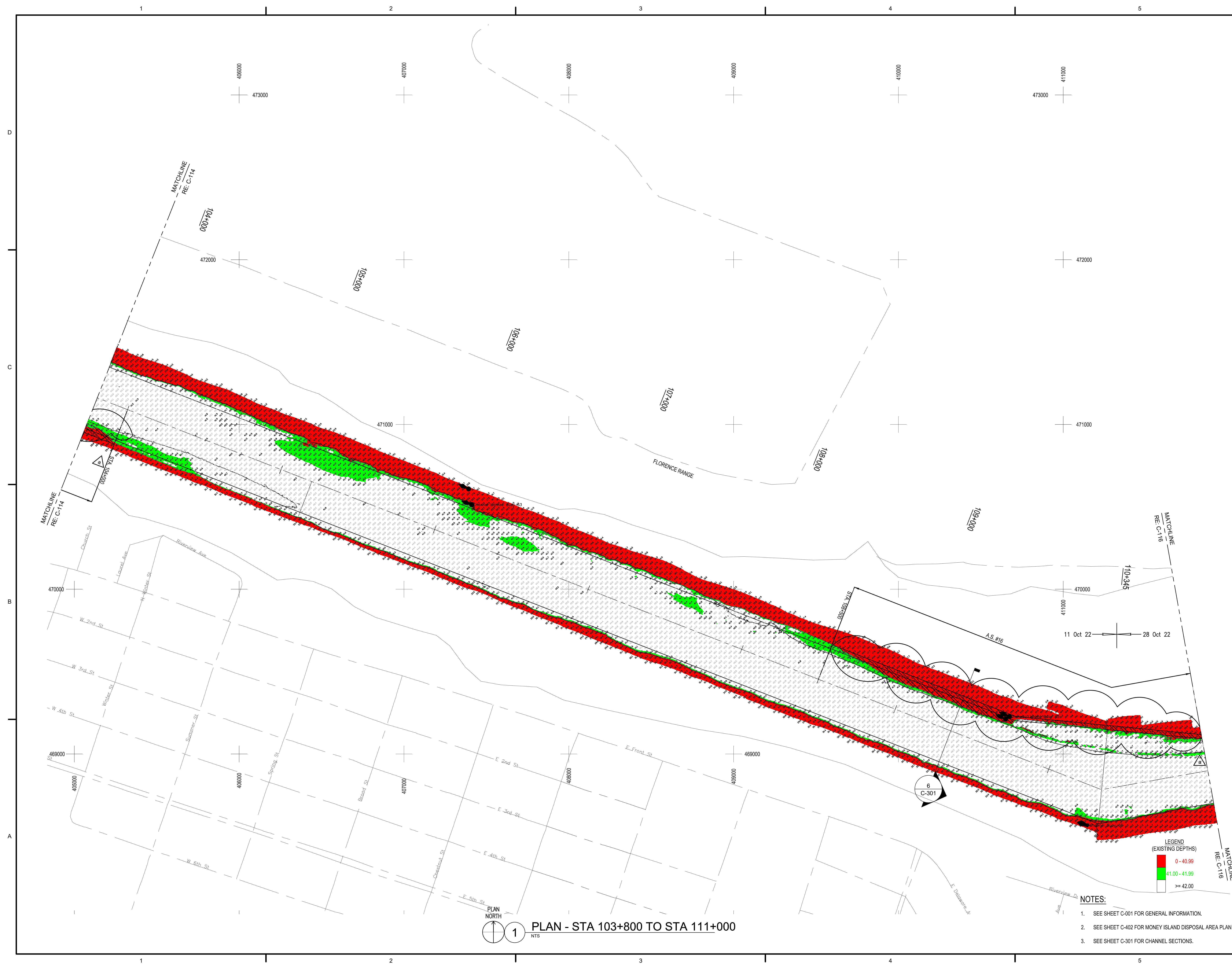
[illegible]

U.S. ARMY CORPS OF ENGINEERS PHILADELPHIA DISTRICT	DOWN BY: _____ DES BY: _____ ISSUED SUBMITTAL DATE: _____ REVIEWED BY: _____ QOC BY: _____ DAN _____ DATE: 09/18/02	CONTRACT NUMBER: _____ *
	PLOT SCALE: _____ FILE NAME: _____ DWG. SIZE: 30"X42" C-15 PLAN - STA. 10+480 TO STA. 11+000 (Ramp)	

DELAWARE RIVER
PHILADELPHIA, PENNSYLVANIA TO TRENTON, NEW JERSEY
MAINTENANCE DREDGING
PLAN - STA. 103+800 TO STA. 111+000

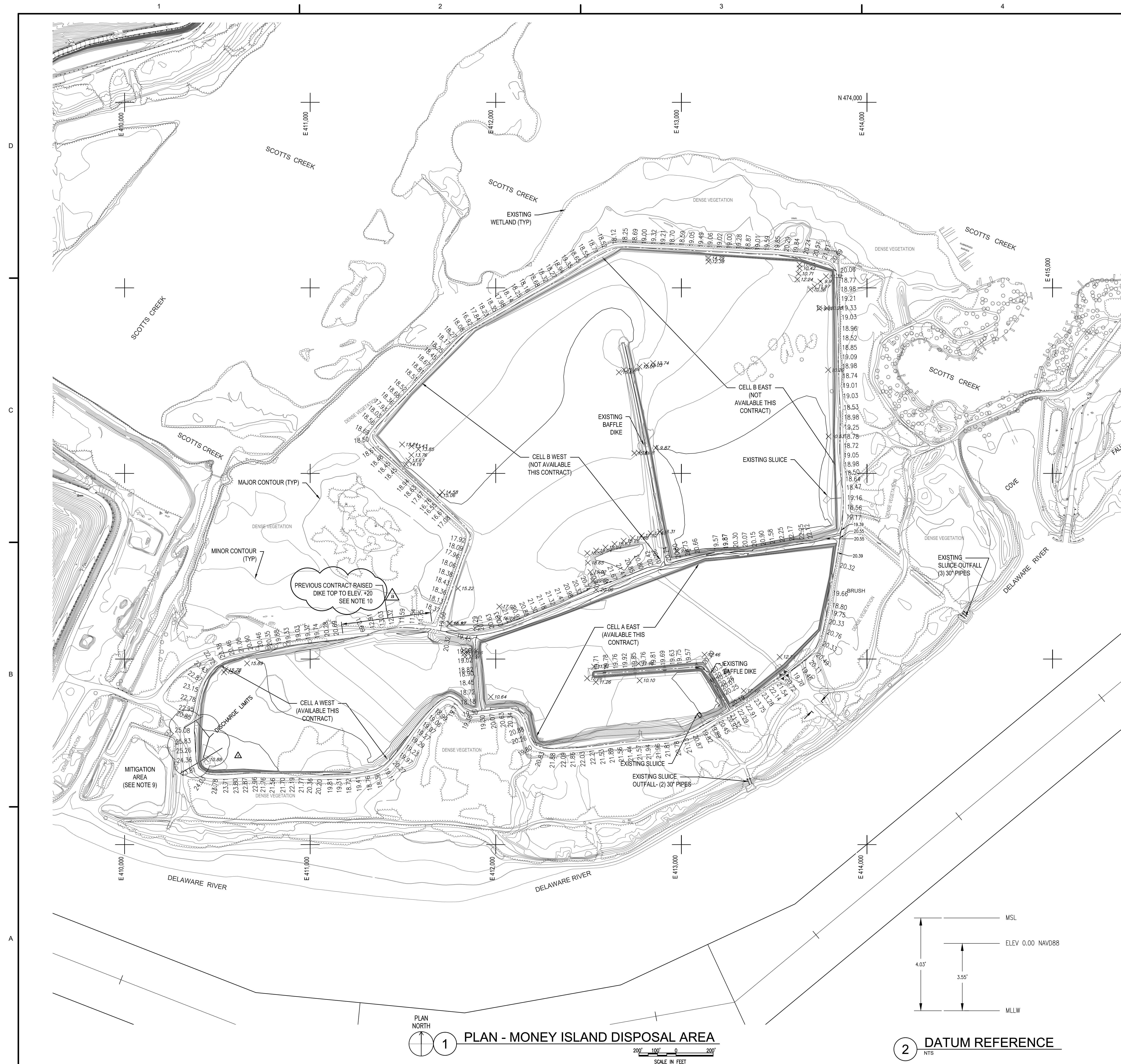
SHEET NUMBER

C-115



NOTES:

1. SEE SHEET C-001 FOR GENERAL INFORMATION.
2. SEE SHEET C-402 FOR MONEY ISLAND DISPOSAL AREA PLAN
3. SEE SHEET C-301 FOR CHANNEL SECTIONS.



1. VERTICAL DATUM FOR LAND SURVEYS IS BASED ON NATIONAL GEODETIC SURVEY MEAN SEA LEVEL.
2. TOPOGRAPHY SHOWN WAS GENERATED USING PHOTOGRAMMETRIC METHODS BASED ON AERIAL PHOTOGRAPHY DATED DECEMBER 19, 2018, AND UPDATED WITH A TOP OF DIKE SURVEY DATED 6 APRIL 2020. CONTOURS (2 FOOT INTERVAL) AND SPOT ELEVATIONS SHOWN CAN ONLY BE CONSIDERED REPRESENTATIVE OF THE SITE CONDITIONS AS THEY EXISTED AT THE DATES INDICATED. EARTHWORK ACTIVITIES HAVE TAKEN PLACE SINCE THE TOPOGRAPHY WAS GENERATED. CONTRACTORS ARE STRONGLY ENCOURAGED TO VISIT THE SITE WHERE WORK IS TO BE PERFORMED TO ACQUAINT THEMSELVES WITH EXISTING CONDITIONS THAT COULD AFFECT THE PROJECT COST.
3. THE END OF ALL DISCHARGE PIPES SHALL BE LOCATED INSIDE THE DISPOSAL AREA LIMITS AS SPECIFIED IN THE CONTRACT SPECIFICATIONS SECTION 35 20 23. PIPE SHALL BE LOCATED SUCH THAT THE DISCHARGE DOES NOT SCOUR THE SLOPE FACE OR THE TOE-OF-SLOPE OF THE DISPOSAL AREA DIKE IN THE VICINITY OF THE DISCHARGE AREA. DREDGED MATERIAL HAS BEEN RECENTLY PLACED IN CELL A EAST AND HENCE CONTRACTOR MUST EXERCISE CAUTION USING ONLY LOW GROUND PRESSURE EQUIPMENT WHEN LAYING DISCHARGE LINE TO CELL B EAST.
4. WHERE THE DREDGE PIPE LINE CROSSES EXISTING ACCESS ROADS, A RAMP SHALL BE CONSTRUCTED OVER THE PIPE THE FULL WIDTH OF THE ACCESS ROAD, AS SHOWN IN DETAIL 2/C-401.
5. BORROW FOR DIKING MATERIAL SHALL BE OBTAINED FROM WITHIN DISPOSAL AREA CELL B WEST, BUT NOT CLOSER THAN 50 FEET FROM THE INSIDE TOE OF THE DIKE SECTIONS.
6. SHOULD THE CONTRACTOR DESIRE TO MODIFY THE DISCHARGE LIMITS SHOWN, APPROVAL MUST BE GRANTED BY CONTRACTING OFFICER PRIOR TO MODIFICATION OF LIMITS.
7. THE SITE IS GENERALLY CLEAR WITH PASSABLE ACCESS ROADS, BUT SOME MINOR CLEARING OF VEGETATION MAY BE REQUIRED IN ISOLATED LOCATIONS TO GAIN ACCESS.
8. THE CONTRACTOR SHALL COORDINATE INGRESS, EGRESS AND ALL CONSTRUCTION ACTIVITIES AT THIS SITE WITH MR. BOB JONES, WASTE MANAGEMENT INC. SITE MANAGER AT MONEY ISLAND, AT (215) 768-4041 PRIOR TO WORK COMMENCEMENT.
9. ~~THE CONTRACTOR SHALL NOT ENTER THE MITIGATION AREA.~~
10. BREACH PREVIOUSLY REPAIRED BY OTHERS.

[illegible]

U.S. ARMY CORPS OF ENGINEERS PHILADELPHIA DISTRICT	DES BY:	DES BY:	RESP/ SUBMITTAL DATE:
	CND BY:	CND BY:	RESP/ SUBMITTAL DATE:
	REV BY:	REV BY:	SOLICITATION NUMBER:
	DAN	GAG	W15128298003
	CONTRACT NUMBER:		*
	PLOT SCALE:		
	DWG. SIZE:	FILE NAME:	
	30"x42"	C-402 PLAN - MONEY ISLAND CELL A DISPOSAL	

DELAWARE RIVER
PHILADELPHIA, PENNSYLVANIA TO TRENTON, NEW JERSEY
MAINTENANCE DREDGING
PLAN - MONEY ISLAND CELL A DISPOSAL AREA

SHEET NUMBER

C-402