

8

7

6

5

4

3

2

1

NOTES: UNLESS OTHERWISE SPECIFIED.

1. APPLICABLE STANDARDS AND SPECIFICATIONS:
2002/95/EC RoHS
ASME Y14.5–2004, DIMENSION AND TOLERANCES
ASME Y14.38, ANSI Y14.38M, ABBREVIATIONS

2. ALL DIMENSIONS SHOWN ARE FOR FABRICATION AND INSPECTION PURPOSES.
GEOMETRY IS CONTROLLED AND MAINTAINED BY CAD FILE.

3. CUT TEST LEAD GATOR PAIRS ITEM NO. 3 IN THE CENTER AND USE 1/2
OF ONE FOR EACH GATOR WIRE. YELLOW = PIN 8 & 21, BLUE = PIN 10
& 23, SEE SHEET 3. REMAINING RED AND GREEN GATOR CLIPS CAN BE
USED ON 2101002.

REVISIONS

REV	DESCRIPTION	DATE	APPROVED
–	INITIAL RELEASE	21/12/20	M. STALEY

Parts List				
Item	Qty	Part No.	Mfr.	Description
1	1	1757824-8	TE Conn	P1, CONN D-SUB HD RCPT 26POS CRIMP
2	1	8655MH1511LF	AMP/FCI	P1 CONN BACKSHELL 15POS 180DEG SHLD
3	1	1008	Adafruit	TEST LEAD GATOR TO GATOR 15", 12 LEADS, MULTI-COLORS
4	1	L60D-G5-W-ND	VCC	LED1, 5 Volt LED INDICATOR, GREEN
5	1	L60D-R5-W-ND	VCC	LED2, 5 Volt LED INDICATOR, RED

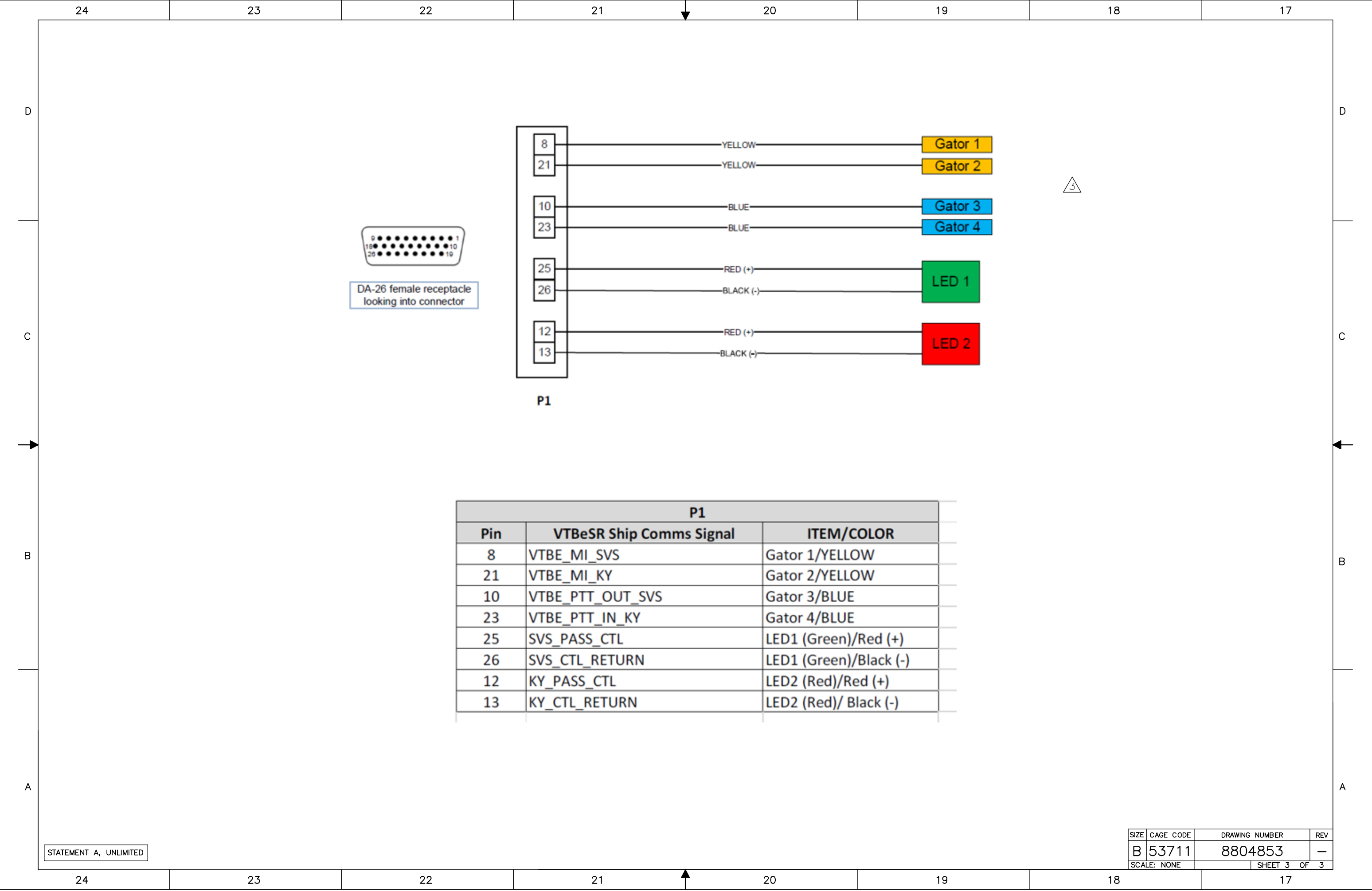
DISTRIBUTION STATEMENT A: APPROVED FOR PUBLIC RELEASE; DISTRIBUTION IS UNLIMITED.

DESTRUCTION NOTICE: FOR CLASSIFIED DOCUMENTS, FOLLOW PROCEDURES IN DoD 5220–22.M, INDUSTRIAL SECURITY MANUAL, CHAPTER 5, SECTION PARAGRAPHS 700 THROUGH 711 OR DoD 5200.1–R, INFORMATION SECURITY PROGRAM REGULATION, CHAPTER IX. FOR UNCLASSIFIED, LIMITED DOCUMENTS, DESTROY BY ANY METHOD THAT WILL PREVENT DISCLOSURE OF CONTENTS OR RECONSTRUCTION OF THE DOCUMENTS.

CLASSIFICATION

THIS DRAWING IS UNCLASSIFIED

UNLESS OTHERWISE SPECIFIED DIMENSIONS ARE IN INCHES		CONTRACT NO.		DEPARTMENT OF THE NAVY NAVAL SEA SYSTEMS COMMAND WASHINGTON, D.C. 20376	
TOLERANCES		APPROVALS		DATE	
DECIMALS	ANGULAR	DRAWN	S. BRETT	21/12/20	
.X ± .1	∠ ± 0°30'	CHECKED	A. FEINBERG	21/12/20	
.XX ± .03		DESIGNED	N/A	N/A	
.XXX ± .010		PRODUCTION	N/A	N/A	
FRACTIONS ± 1/32		APPROVED	M. STALEY	21/12/20	
SURFACE ROUGHNESS: REMOVE BURRS AND BREAK SHARP EDGES .015 MAX. DO NOT SCALE DRAWING		CAGE CODE: 1MYP5 GLOBAL TECHNICAL SYSTEMS 421 S. BIRDNECK RD. VIRGINIA BEACH, VA 23451		SIZE	CAGE CODE
MATERIAL:				B	53711
NEXT ASSY USED ON APPLICATION		FINISH:		DRAWING NUMBER	
				8804853	
				SCALE: NONE	SHEET 1 OF 3



DA-26 female receptacle
looking into connector



P1

P1		
Pin	VTBeSR Ship Comms Signal	ITEM/COLOR
8	VTBE_MI_SVS	Gator 1/YELLOW
21	VTBE_MI_KY	Gator 2/YELLOW
10	VTBE_PTT_OUT_SVS	Gator 3/BLUE
23	VTBE_PTT_IN_KY	Gator 4/BLUE
25	SVS_PASS_CTL	LED1 (Green)/Red (+)
26	SVS_CTL_RETURN	LED1 (Green)/Black (-)
12	KY_PASS_CTL	LED2 (Red)/Red (+)
13	KY_CTL_RETURN	LED2 (Red)/ Black (-)