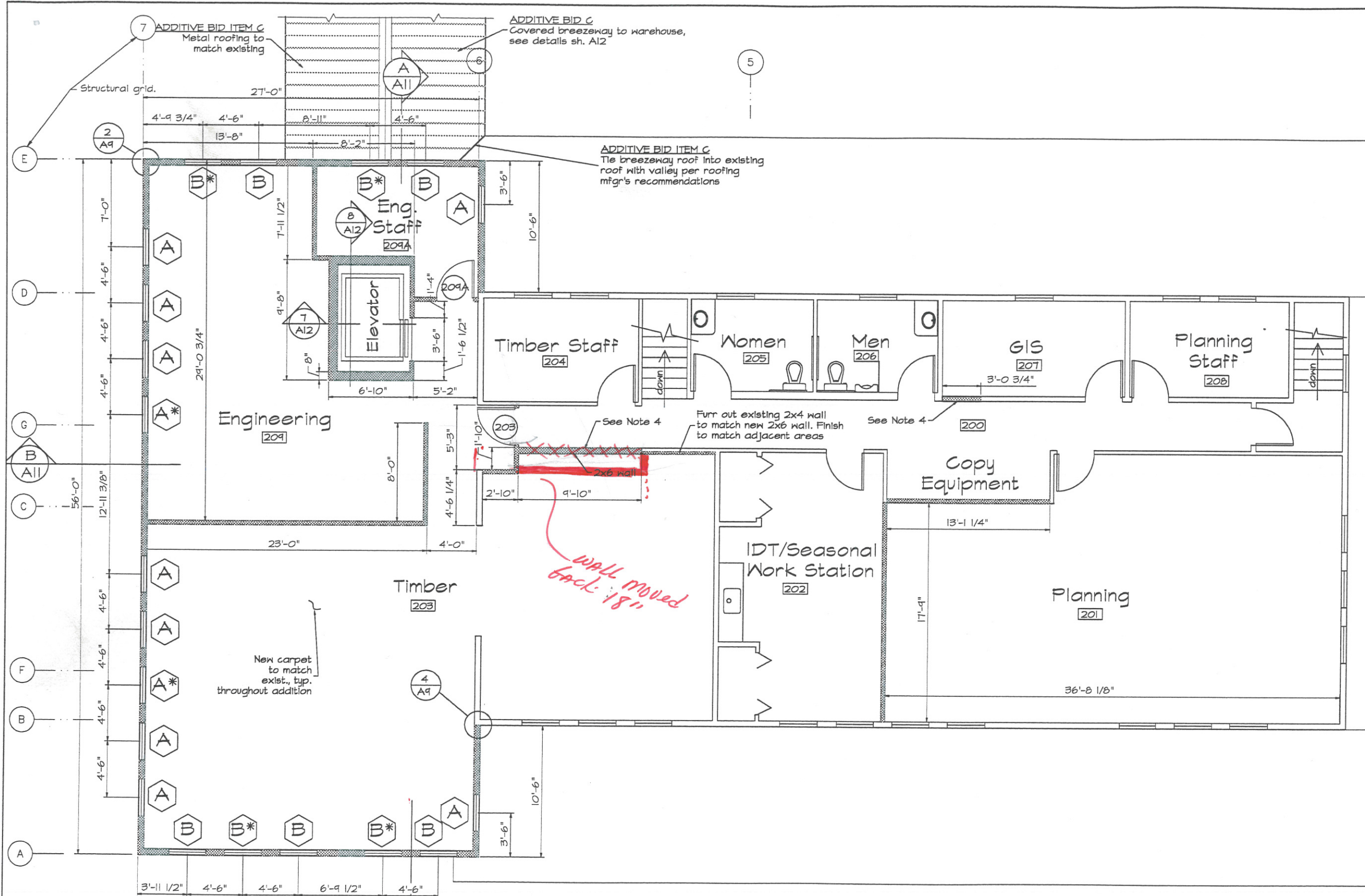
 <p>WRANGELL RANGER DISTRICT OFFICE EXPANSION <b>FIRST FLOOR PLAN (ADDITION)</b></p>	<p>drawing number</p> <p><b>QPI701</b></p>	<p>approved</p> <p>_____</p>
	<p>ADMINISTRATIVE FACILITIES U.S. Department of Agriculture Forest Service — Region 10</p>	<p>sheet number</p> <p><b><u>A4 OF 13</u></b> of <b><u>39</u></b></p>

Wrangell\_firplns.dwg 6-20-00 9:30:09 am EST



Note:

1. All interior dimensions are to face of existing finished surface in existing construction and to face of stud in new construction.
2. All interior walls are 2x4 studs, 16"o.c. unless otherwise noted.
3. All exterior walls are 2x6 studs, 16"o.c. unless otherwise noted.
4. Reinstall salvaged wainscoting on new hallway walls as directed by C.O.
5. Finish new walls in addition to match existing office walls.

### LEGEND

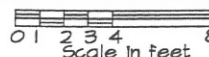
 New walls

(100) Door number, see schedule sh. AIO

 Window type, see sh. A10

$A^*$  Denotes ADDITIVE BID ITEM A windows

## Second Floor Plan Addition



WRANGELL RANGER DISTRICT  
OFFICE EXPANSION  
SECOND FLOOR PLAN (ADDITION)

drawing  
number  
QP1701

approved

sheet  
number  
**A5 OF 13**  
of  
39



ADMINISTRATIVE FACILITIES  
U.S. Department of Agriculture  
Forest Service - Region 10