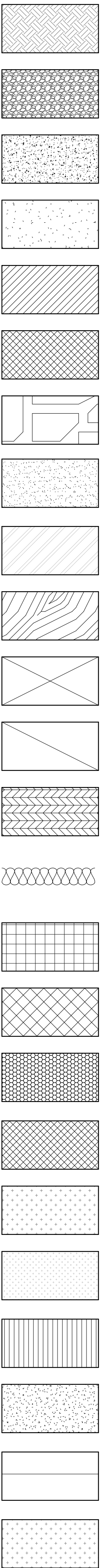


MATERIALS LEGEND:



ABBREVIATIONS:

A	A/C	AIR CONDITIONING
A	A/V	AUDIO/ VISUAL
A	ACOUST	ACOUSTICAL
A	ACP	ACOUSTICAL CEILING PANEL
A	ACT	ACOUSTICAL CEILING TILE
A	AD	AREA DRAIN
A	ADD	ADDENDUM
A	ADJ	ADJUSTABLE/ ADJACENT
A	AFF	ABOVE FINISH FLOOR
A	AHU	AIR HANDLING UNIT
A	ALUM	ALUMINUM
A	ALT	ALTERNATE
A	ANOD	ANODIZED
A	AP	ACCESS PANEL
A	APC	ARCH/PRECAST CONCRETE
A	APPROX	APPROXIMATE
A	ARCH	ARCHITECT/ ARCHITECTURAL
A	ATTEN	ATTENUATION
A	AUTO	AUTOMATIC
A	AVG	AVERAGE
A	AWP	ACOUSTICAL WALL PANEL
B	BD	BOARD
B	BIT	BITUMINOUS
B	BLDG	BUILDING
B	BLK	BLOCK
B	BLKG	BLOCKING
B	BM	BENCH MARK/ BEAM
B	BOC	BACK OF CURB
B	BOT	BOTTOM
B	BO	BOTTOM OF
B	BRG	BEARING
B	BRK	BRICK
B	BRKT	BRACKET
B	BMSMT	BASEMENT
B	BTWN	BETWEEN
B	BVL	BEVELED
B	BW	BOTH WAYS
C	C	COURSE
C	CAB	CABINET
C	CAP	CAPACITY
C	CB	CATCH BASIN
C	CCTV	CLOSED CIRCUIT TV
C	CF	CUBIC FEET
C	CFM	CUBIC FEET PER MINUTE
C	CG	CORNER GUARD
C	CI	CAST IRON
C	CIP	CAST-IN-PLACE
C	CJ	CONTROL JOINT
C	CL	CENTER LINE
C	CLG	CEILING
C	CLOS	CLOSET
C	CLR	CLEAR/ CLEARANCE
C	CM	CENTIMETER
C	CMP	CORRUGATED METAL PIPE
C	CMT	CERAMIC MOSAIC TILE
C	CMU	CONCRETE MASONRY UNIT (S)
C	CO	CLEAN OUT
C	COL	COLUMN
C	COMB	COMBINATION
C	CONC	CONCRETE
C	CONN	CONNECTION
C	CONST	CONSTRUCT/ CONSTRUCTION
C	CONT	CONTINUOUS
C	CONTR	CONTRACTOR
C	COORD	COORDINATE
C	COR	CONTRACTING OFFICER'S REPRESENTATIVE
C	CORR	CORRIDOR/ CORRUGATED CONCRETE PIPE
C	CP	CARPET
C	CS	COUNTERSINK
C	CSMT	CASEMENT
C	CT	CERAMIC TILE
C	CTR	COUNTER
C	CW	CUBIC
C	CU	COLD WATER
D	DBL	DOUBLE
D	DEMO	DEMOLISH/ DEMOLITION
D	DEPT	DEPARTMENT
D	DF	DRINKING FOUNTAIN
D	DH	DOUBLE HUNG
D	DIAG	DIAGONAL
D	DIA.	DIAMETER
D	DIM	DIMENSION
D	DISP.	DISPENSER
D	DMT	DEMOUNTABLE
D	DN	DOWN
D	DR	DOOR
D	DS	DOWNSPOUT
D	DTL	DETAIL
D	DWG	DRAWING
E	E	EAST
E	EA	EACH
E	EF	EXHAUST FAN
E	EJ	EXPANSION JOINT
E	EL	ELEVATION
E	ELAST	ELASTOMERIC
E	ELEC	ELECTRICAL
E	ELEV	ELEVATOR
E	EMERG	EMERGENCY
E	EP	ELECTRICAL PANELBOARD
E	EQ	EQUAL
E	EQUIP	EQUIPMENT
E	ESC	ESCALATOR
E	EST	ESTIMATE
E	ETR	EXISTING TO REMAIN
E	EW	ELECTRIC WATER COOLER
E	EXH	EXHAUST
E	EXIST	EXISTING
E	EXP	EXPANSION/ EXPANDED
E	EXT	EXTERIOR

F	FA	FIRE ALARM
F	FAB	FABRICATE
F	FB	FACE BRICK
F	FBO	FURNISHED BY OWNER
F	FCT	STATIC DISSIPATIVE TILE
F	FD	FLOOR DRAIN
F	FDN	FOUNDATION
F	FDV	FIRE DEPARTMENT VALVE
F	FE	FIRE EXTINGUISHER & BRACKET
F	FEF	FIRE EXTINGUISHER CABINET
F	FF	FINISH FLOOR
F	FF&E	FIXTURES / FURNITURE / EQUIPMENT
F	FFX	FIXTURE
F	FFE	FINISH FLOOR ELEVATION
F	FH	FIRE HYDRANT
F	FHC	FIRE HOSE CABINET
F	FIN	FINISH/ FINISHED
F	FLG	FLASHING
F	FLR	FLOOR
F	FLUOR	FLUORESCENT
F	FOC	FACE OF CONCRETE
F	FOF	FACE OF FINISH
F	FOG	FACE OF GYPSUM BOARD/ WALL
F	FOM	FACE OF MASONRY
F	FOS	FACE OF STUDS
F	FR(FRM)	FRAME (D), (ING)
F	FS	FLOOR SINK
F	FT	FOOT/ FEET
F	FTG	FOOTING
F	FUR	FURNISHING
F	FUT	FUTURE
F	FV	FIELD VERIFY
F	FVC	FIRE VALVE CABINET
G	GA	GAUGE
G	GALV	GALVANIZED
G	GB	GRAB BAR
G	GC	GENERAL CONTRACTOR
G	GFR	GLASS FIBER REINF. CONC.
G	GL	GLASS/ GLAZING
G	GOVT	GOVERNMENT
G	GPM	GALLON PER MINUTE
G	GYP	GYPSUM
H	HB	HOSE BIBB
H	HC	HOLLOW CORE
H	HD	HEAD
H	HDBD	HARDBOARD
H	HDR	HEADER
H	HDW	HARDWARE
H	HDWD	HARDWOOD
H	HK	HOOK
H	HM	HOLLOW METAL
H	HORIZ	HORIZONTAL
H	HPT	HIGH POINT
H	HR	HOUR
H	HS	HIGH STRENGTH
H	HT	HEIGHT
H	HTG	HEATING
H	HTR	HEATER
H	HVAC	HEATING/ VENTILATING/ AIR CONDITIONING
H	HW	HOT WATER
H	HHW	HOT WATER HEATER
I	ID	INSIDE DIAMETER
I	IN	INCH
I	INCAND	INCANDESCENT
I	INCL	INCLUDE (D), (ING)
I	INFO	INFORMATION
I	INST	INSTALL/ INSTALLATION
I	INSUL	INSULATE/ INSULATION
I	INT	INTERIOR
I	INV	INVERT
J	JAN	JANITOR
J	JB	JUNCTION BOX
J	JC	JANITOR CLOSET
J	JST	JOIST
J	JT	JOINT
K	KIT	KITCHEN
K	KP	KICK PLATE
L	L	LONG/ LENGTH
L	LAB	LABORATORY
L	LAM	LAMINATE (D)
L	LAV	LAVATORY
L	LBS	POUNDS
L	LF	LINEAR FOOT (FEET)
L	LH	LEFT HAND
L	LLH	LONG LEG HORIZONTAL
L	LLV	LONG LEG VERTICAL
L	LPT	LOW POINT
L	LRG	LARGE
L	LT(G)	LIGHT/ LIGHTING
L	LVR	LOUVER
L	LWC	LIGHTWEIGHT CONCRETE

M	M	METER (S)
M	MAS	MASONRY
M	MAX	MAXIMUM
M	MBR	MEMBER
M	MECH	MECHANICAL
M	MED	MEDIUM
M	MEMB	MEMBRANE
M	MFG	MANUFACTURING
M	MFR	MANUFACTURER
M	MH	MANHOLE
M	MIN	MINIMUM
M	MISC	MISCELLANEOUS
M	MM	MILLIMETER
M	MO	MASONRY OPENING
M	MOD	MODULAR
M	MTD	MOUNTED
M	MTG	MOUNTING
M	MTL	METAL
M	MULL	MULLION
N	N	NORTH
N	N/A	NOT APPLICABLE
N	NIC	NOT IN CONTRACT
N	NO	NUMBER
N	NOM	NOMINAL
N	NRC	NOISE REDUCTION COEFFICIENT
N	NTS	NOT TO SCALE
O	OC	ON CENTER
O	OD	OUTSIDE DIAMETER
O	OH	OVERHEAD/ OPPOSITE HAND
O	OPNG	OPENING
O	OPP	OPPOSITE
O	ORD	OVERFLOW ROOF DRAIN
O	OZ	OUNCE
P	PA	PUBLIC ADDRESS
P	PB	PANEL BOARD
P	PC	PRECAST CONCRETE
P	PERF	PERFORATE (D)
P	PERM	PERMANENT
P	PERP	PERPENDICULAR
P	PL	PLATE/ PROPERTY LINE
P	PLAM	PLASTIC LAMINATE
P	PLAS	PLASTER
P	PLUMB	PLUMBING
P	PLYWD	PLYWOOD
P	PNL	PANEL
P	POLY	POLYETHYLENE
P	PREFAB	PREFABRICATE (D)
P	PREFIN	PREFINISHED
P	PRELIM	PRELIMINARY
P	PREP	PREPARE (D)
P	PROJ	PROJECT
P	PSF	POUNDS PER SQUARE FOOT
P	PSI	POUNDS PER SQUARE INCH
P	PT	POINT
P	PTD	PAINTED
P	PVC	POLYVINYL CHLORIDE
P	PVMT	PAVEMENT
Q	QTY	QUANTITY
R	R	RISER/ RADIUS/ REVERSED
R	RA	RETURN AIR
R	RB	RESILIENT BASE
R	RCP	REFLECTED CEILING PLAN
R	RD	ROOF DRAIN
R	RE	REFERENCE/ REFER TO
R	REC (D)	RECEIVE (D)
R	REF	REFRIGERATOR
R	REINF	REINFORCE (D), (ING)
R	REQD	REQUIRED
R	REOMT	REQUIREMENT
R	REV	REVISED/ REVISION
R	RFG	ROOFING
R	RH	RIGHT HAND
R	RM	ROOM
R	RO	ROUGH OPENING
R	RR	RESTROOM
R	RTU	ROOF TOP UNIT
R	R/W	RIGHT OF WAY
S	S	SOUTH
S	SAN	SANITARY SEWER
S	SC	SOLID CORE
S	SCH	SCHEDULE
S	SCN	SCREEN
S	SECT	SECTION
S	SF	SQUARE FOOT (SQ.FT.)
S	SHM	SECURITY HOLLOW METAL
S	SHT	SHEET
S	SIM	SIMILAR
S	SO	SPRAY-ON FIREPROOFING
S	SOG	SLAB ON GRADE
S	SPEC	SPECIFICATION (S)
S	SPKR	SPEAKER
S	SP.HD.	SPRINKLER HEAD
S	SQ	SQUARE
S	SS	STAINLESS STEEL
S	STC	SOUND TRANSM. COEFFICIENT
S	STD	STANDARD
S	STG	SEATING
S	STL	STEEL
S	STOR	STORAGE
S	STRUCT	STRUCTURE/ STRUCTURAL
S	SUBFLR	SUBFLOOR
S	SUSP	SUSPENDED
S	SWGR	SWITCH GEAR
S	S.Y.	SQUARE YARD (SQ.YD.)
S	SYM	SYMMETRICAL
S	SYS	SYSTEM

T	T	TREAD
T	T&B	TOP & BOTTOM
T	T&G	TONGUE & GROOVE
T	TEL	TELEPHONE
T	TEMP	TEMPORARY/ TEMPERED
T	THK	THICK (NESS)
T	THRU	THROUGH
T	TGBD	TACK BOARD
T	TOC	TOP OF CURB/ CONCRETE
T	TOD	TOP OF DECK
T	TOM	TOP OF MASONRY
T	TOP	TOP OF PARAPET
T	TOR	TOP OF ROOF
T	TOS	TOP OF STEEL
T	TOW	TOP OF WALL
T	TRANSF	TRANSFORMER
T	TRANSM	TRANSMISSION
T	TV	TELEVISION
T	TYP	TYPICAL
T	TZ	TERRAZZO
U	UH	UNIT HEATER
U	UNFIN	UNFINISHED
U	UNO	UNLESS NOTED OTHERWISE
V	VB	VAPOR BARRIER (VPR.BR.)
V	VCT	VINYL COMPOSITION TILE
V	VERT	VERTICAL
V	VEST	VESTIBULE
V	VIF	VERIFY IN FIELD
V	VT	VINYL TILE
V	VTR	VENT THROUGH ROOF
V	VWC	VINYL WALLCOVERING
W	W	WEST, WIDTH, WIDE, WATER
W	W/	WITH
W	W/W	WITHIN
W	W/O	WITHOUT
W	WB	WOOD BASE
W	WC	WATER CLOSET
W	WD	WOOD
W	WH	WALL HYDRANT
W	WNDW	WINDOW
W	WP	WATERPROOFING/ WORKING POINT
W	WR	WATER RESISTANT
W	WT	WEIGHT
W	X,Y,Z.	MISCELLANEOUS
YD	YD	YARD
@	@	AT
&	&	AND

SYMBOLS:

DISCIPLINE DESIGNATORS:

GI	GENERAL INFORMATION	PD	PLUMBING DEMOLITION
C	CIVIL GENERAL	PP	PLUMBING PLAN
CD	CIVIL DEMOLITION	M	MECHANICAL NOTES / DETAILS / SCH'S
CS	CIVIL SITE	MD	MECHANICAL DEMOLITION
CG	CIVIL GRADING	MH	MECHANICAL HVAC PLAN
CU	CIVIL UTILITIES	MP	MECHANICAL PIPING PLAN
L	LANDSCAPE	E	ELECTRICAL NOTES / DETAILS / SCH'S
S	STRUCTURAL	ES	ELECTRICAL SITE
AD	ARCHITECTURAL DEMOLITION	ED	POWER DEMOLITION PLAN
A	ARCHITECTURAL	EL	LIGHTING PLAN
FP	FIRE PROTECTION	EP	POWER PLAN
P	PLUMBING NOTES / DETAILS / SCH'S	ET	TELCO/INSTR PLAN

SHEET NUMBER:

DISCIPLINE  
SERIES  
SHEET IN SERIES  
PHASE

ROOM NAME/NUMBER:

OFFICE  
ROOM NAME  
SUB ROOM NUMBER (06A)  
ROOM NUMBER (06)  
FLOOR LEVEL (2)  
AREA (B) IF USED

REFERENCE MARK:

DRAWING OR DETAIL NUMBER  
SHEET NUMBER  
RE: A6/ A1.21

SYMBOLS:

NORTH ARROW SYMBOL  
BREAK LINE  
STRUCTURAL GRID BUBBLE  
EXISTING STRUCTURAL GRID BUBBLE  
ELEVATION MARK  
FIRE HYDRANT  
FIRE EXTINGUISHER  
FIRE EXTINGUISHER & CABINET  
FLOOR DRAIN  
ROOF DRAIN  
OVERFLOW ROOF DRAIN  
WALL FINISH TYPE  
MATERIAL KEYNOTE

NOTE TAGS:

SHEET NOTE NUMBER  
DEMOLITION NOTE NUMBER  
FIXTURE ACCESSORY NUMBER

DETAILS:

DRAWING NUMBER  
SHEET NUMBER

DOOR SYMBOLS:

DOOR NO.  
DOOR NO.  
DOOR NO.  
NEW DOOR  
EXISTING DOOR  
EXISTING DOOR TO BE REMOVED

WALL SYMBOLS:

NEW WALL  
EXISTING WALL

SYMBOLS - WINDOW TYPES/ DOOR & FRAME TYPES/ LOUVER TYPES:

DOOR FRAME NUMBER SYMBOL (F1, F2, F3, ETC...)  
WINDOW NUMBER SYMBOL (A-Z, AA, AB - AZ, BA, BB - BZ...)  
LOUVER NUMBER SYMBOL (L1, L2, L3, ...)  
GLASS TYPES

GENERAL NOTES:

- ALL CONTRACTORS AND THEIR SUPERVISORY PERSONNEL MUST REVIEW THE GENERAL AND SUPPLEMENTARY CONDITIONS TO THE CONTRACT.
- ALL WORK MUST CONFORM WITH PROJECT SPECIFICATIONS.
- CONTRACTOR MUST BECOME FULLY ACQUAINTED WITH CONDITIONS RELATED TO THE WORK.
- CONTRACTOR MUST BE SOLELY RESPONSIBLE FOR THE MEANS, METHODS AND SEQUENCES OF CONSTRUCTION AND THE SAFETY OF ALL CONSTRUCTION PERSONNEL AND VISITORS.
- DRAWINGS CONTAINED IN THIS SET MUST NOT BE REPRODUCED FOR SHOP DRAWINGS. COPIES OF THESE DRAWINGS SUBMITTED AS SHOP DRAWINGS WILL BE REJECTED AND RETURNED TO THE CONTRACTOR.
- EACH SUBCONTRACTOR MUST EXAMINE SUBSTRATE AND/OR CONDITIONS UNDER WHICH THE WORK WILL BE INSTALLED AND REPORT TO THE CONTRACTOR IN WRITING ANY CONDITIONS DETRIMENTAL TO THE PROPER AND TIMELY EXECUTION OF THAT INSTALLER'S WORK. DO NOT PROCEED UNTIL UNSATISFACTORY CONDITIONS ARE CORRECTED. COMMENCING WITH INSTALLATION WILL CONSTITUTE ACCEPTANCE OF THE SUBSTRATE AND/OR CONDITIONS.
- DO NOT SCALE DRAWINGS. FOLLOW WRITTEN DIMENSIONS AND NOTES. CONTACT VHA COR FOR CLARIFICATIONS, IF REQUIRED.
- DIMENSIONS SHOWN ON THE FLOOR PLAN ARE TO THE FACE OF GYP. BOARD/ WALL (FOG), FACE OF MASONRY (FOM), FACE OF CONCRETE WALLS (FOC) AND COLUMN GRID LINES, UNLESS OTHERWISE NOTED OR INDICATED.
- WALL THICKNESS: REFER TO WALL TYPE SCHEDULE AND DETAILS FOR SPECIFIC INFORMATION UNLESS NOTED OTHERWISE.
- "TYPICAL", AS USED IN THESE DOCUMENTS, MEANS THAT THE CONDITION OR DIMENSION IS REPRESENTATIVE OF, OR THE SAME, FOR SIMILAR CONDITIONS THROUGHOUT.
- IF THERE IS A DISCREPANCY BETWEEN SMALL SCALE AND LARGE SCALE DRAWINGS, (PLAN, SECTION & DETAIL DRAWINGS, ETC.), CONTACT VHA COR FOR CLARIFICATION. FOR BIDDING PURPOSES: SEE SPECIFICATIONS.
- IF THERE ARE ANY DISCREPANCIES BETWEEN THE DRAWINGS AND SPECIFICATIONS, CONTACT VHA COR FOR CLARIFICATION. FOR BIDDING PURPOSES: THE SPECIFICATIONS GOVERN.
- ANY DISCREPANCIES BETWEEN THE DRAWINGS AND ACTUAL CONDITIONS MUST BE REPORTED TO THE VHA COR IN WRITING FOR RESOLUTION, PRIOR TO PROCEEDING WITH THE WORK.
- ANY AND ALL DISCREPANCIES MUST BE REPORTED TO THE VHA COR IN WRITING FOR RESOLUTION, PRIOR TO PROCEEDING WITH THE WORK. IN THESE INSTANCES, NO CHANGE ORDERS OR EXTENSIONS OF TIME WILL BE ALLOWED OR ACCEPTED FOR PROCEEDING WITH THE WORK WITHOUT THE VHA CONTRACTING OFFICER'S WRITTEN DIRECTION AND APPROVAL. ALSO, CONTRACTOR MUST REPAIR AND/OR REPLACE ANY UNAUTHORIZED WORK, AS INDICATED BY THE VHA CONTRACTING OFFICER. AT NO ADDITIONAL COST TO THE VHA.
- ALL DISSIMILAR METAL MATERIALS MUST BE ISOLATED WITH AN APPROVED NONMETAL ISOLATION MATERIAL, RE SPECIFICATIONS.
- OPEN EXTERIOR JOINTS AROUND WINDOW AND DOOR FRAMES, BETWEEN WALLS AND FOUNDATIONS, BETWEEN WALL PANELS AND AT PENETRATIONS OF UTILITIES THROUGH THE BUILDING ENVELOPE, ETC. MUST BE SEALED, CAULKED, FLASHED OR WEATHER-STRIPPED AS REQUIRED FOR COMPATIBILITY WITH ADJACENT MATERIALS AND TO ELIMINATE AIR LEAKAGE AND WATER ENTRY, RE SPECIFICATIONS.
- PROVIDE SEALANT AND/OR CAULKING BETWEEN DISSIMILAR ADJOINING INTERIOR MATERIALS PER SPECIFICATIONS. (I.E. WINDOW SILLS TO GYP. BD., ACT. CEILINGS TO MASONRY WALLS, ETC.)
- DOOR OPENINGS NOT LOCATED BY DIMENSION MUST BE CENTERED IN WALL SHOWN OR LOCATED 2 INCHES FROM FINISH WALL TO FINISH JAMB, ALWAYS ALLOWING A MINIMUM OF 18" FROM THE PULL SIDE OF THE DOOR TO THE INTERSECTING WALL.
- CONTRACTOR MUST VERIFY THE LOCATIONS OF ALL EXISTING UNDERGROUND UTILITIES AND THEIR SERVICE CONNECTIONS WITH THE VHA COR.
- CONTRACTOR MUST COORDINATE SIZE, LOCATIONS AND NUMBER OF ALL ROOF OPENINGS AND ROOF ACCESSORIES WITH ALL OTHER TRADES. REFER TO THE ARCHITECTURAL, STRUCTURAL, PLUMBING, MECHANICAL AND ELECTRICAL DRAWINGS.
- LOCATIONS AND SIZES OF ALL CONCRETE MECHANICAL AND ELECTRICAL PADS MUST BE COORDINATED BY THE MECHANICAL AND ELECTRICAL CONTRACTORS, WITH THE SELECTED EQUIPMENT MANUFACTURER/SUPPLIER AND ARE TO BE APPROVED BY THE VHA COR PRIOR TO PROCEEDING WITH THE WORK.
- EXCEPT AT FIRE-RATED PARTITIONS, ALL WALL AND COLUMN GYPSUM BOARD FACING MUST BE HELD AT 5/8 INCH BELOW STRUCTURE, UNLESS DETAILED OR NOTED OTHERWISE.
- AT ALL TELECOMMUNICATION ROOMS: PROVIDE 3/4" X 8'-0" HIGH FIRE-RETARDANT TREATED WOOD SHEATHING OR PROVIDE PLYWOOD OVER NON-COMBUSTIBLE SHEATHING, BOTTOM TO BE LOCATED AT 4" AFT. VERIFY LENGTHS AND LOCATIONS WITH ELECTRICAL DRAWINGS, RE SPECIFICATION SECTION 27 05 11.
- GLASS DOORS, ADJACENT PANELS AND ALL GLAZED OPENINGS WITHIN 1'-6" OF THE FLOOR, AND WITHIN A 24-INCH ARC OF EITHER VERTICAL EDGE OF A DOOR, ETC., MUST BE SAFETY GLAZING IN ACCORDANCE WITH SPECIFICATION SECTION 08 44 13.
- ALL CEILING HEIGHTS AS SHOWN ON PLANS AND DETAILS ARE FROM SLAB OR TILE FLOOR (FINISHED FLOOR) TO FINISH CEILING.
- PROVIDE INDEPENDENT FRAMING AND ATTACHMENTS TO THE STRUCTURE, ADEQUATE TO SUPPORT THE CEILING SYSTEM, LIGHT FIXTURES, DUCTS, DIFFUSERS, SPRINKLER PIPING AND BUS DUCTS.
- ALL CLOSETS AND ALCOVES WITHOUT A SPACE IDENTIFICATION NUMBER MUST HAVE THE SAME FINISHES AS ADJOINING SPACES.
- CONTRACTOR TO INSTALL WOOD BLOCKING AND PLYWOOD, AS REQUIRED, FOR THE MOUNTING OF ALL TOILET ACCESSORIES, MILLWORK/ CASEWORK, AV EQUIPMENT, MEP ITEMS AND RADIOLOGY EQUIPMENT, ETC., RE SPECIFICATIONS.
- REFER TO SPECIFICATIONS FOR ALL REQUIRED TESTING AND INSPECTIONS.
- ANY/ ALL PROPRIETARY PRODUCTS DESCRIBED AND/OR DRAWN IN THE DOCUMENTS (BUT NOT SPECIFIED) ARE TO MEET THE MANUFACTURER'S STANDARD CRITERIA WHICH IS NOT LIMITED TO THE FOLLOWING: PERFORMANCE REQUIREMENTS, QUALITY ASSURANCE REQUIREMENTS, APPLICABLE CODES AND INDUSTRY STANDARDS, FABRICATION, ASSEMBLY, HANDLING, DELIVERY, STORAGE, INSTALLATION, OPERATION, ADJUSTMENTS, ETC. PROVIDE THE MANUFACTURER'S STANDARD WARRANTY AND STANDARD FINISH WARRANTY. PROVIDE PRODUCT DATA, SHOP DRAWINGS, SAMPLES AND MAINTENANCE DATA AS REQUIRED. REFER TO DIVISION 01 SPEC. SECTIONS WHICH ALSO APPLY, SUCH AS SUBSTITUTION PROCEDURES, SUBMITTAL PROCEDURES, QUALITY REQUIREMENTS, REFERENCES, EXECUTION AND CLOSEOUT PROCEDURES. NOTE: ANY SUBSTITUTIONS MUST MEET THE DESIGN INTENT, AS WELL AS THE CRITERIA DESCRIBED ABOVE.
- ALL EXTERIOR EXPOSED STEEL MUST BE PAINTED PER APPLICABLE SECTIONS OF SPECIFICATION DIVISION 05.

CASEWORK SYMBOLS:

DEPTH  
0'-0" - 1'-0"  
B10  
BASE CABINET DEPTH  
BASE CABINET TYPE

DEPTH  
0'-0" - 1'-0"  
W10  
WALL CABINET DEPTH  
WALL CABINET TYPE

(WALL CABINETS, TALL CABINETS, ADJUSTABLE SHELVES, LOCKERS, ETC.)

WALL TYPE INDICATOR:

A4  
WALL TYPE DESIGNATION

ELEVATION SYMBOLS:

SHEET NUMBER  
DIRECTION  
DRAWING NUMBER

EXTERIOR

SHEET NUMBER  
DIRECTION  
DRAWING NUMBER

INTERIOR

WALL SECTION AND DETAIL SYMBOLS:

DRAWING NUMBER  
SHEET NUMBER  
DIRECTION

BUILDING SECTIONS:

BUILDING SECTION NUMBER  
SHEET NUMBER  
DIRECTION

REVISION MARK/ CLOUD:

1  
REVISION NUMBER

BUILDING ADDITION NOTATION:

NEW  
EXISTING

MATCH LINE:

AREA A  
AREA B

KEY PLAN SYMBOL:

D  
A  
C  
B  
HATCHED AREA IS AREA PLAN AS SHOWN ON SHEET

REFLECTED CEILING PLAN SYMBOLS:

9'-0"  
CEILING HEIGHT

SUPPLY

RETURN / EXHAUST

2' x 4' LIGHT FIXTURE

1' x 4' LIGHT FIXTURE

2' x 2' LIGHT FIXTURE

4' x 4' LIGHT FIXTURE

LINEAR PENDANT LIGHT FIXTURE

INDUSTRIAL STRIP LIGHT

CAN LIGHT

ACCESS PANEL

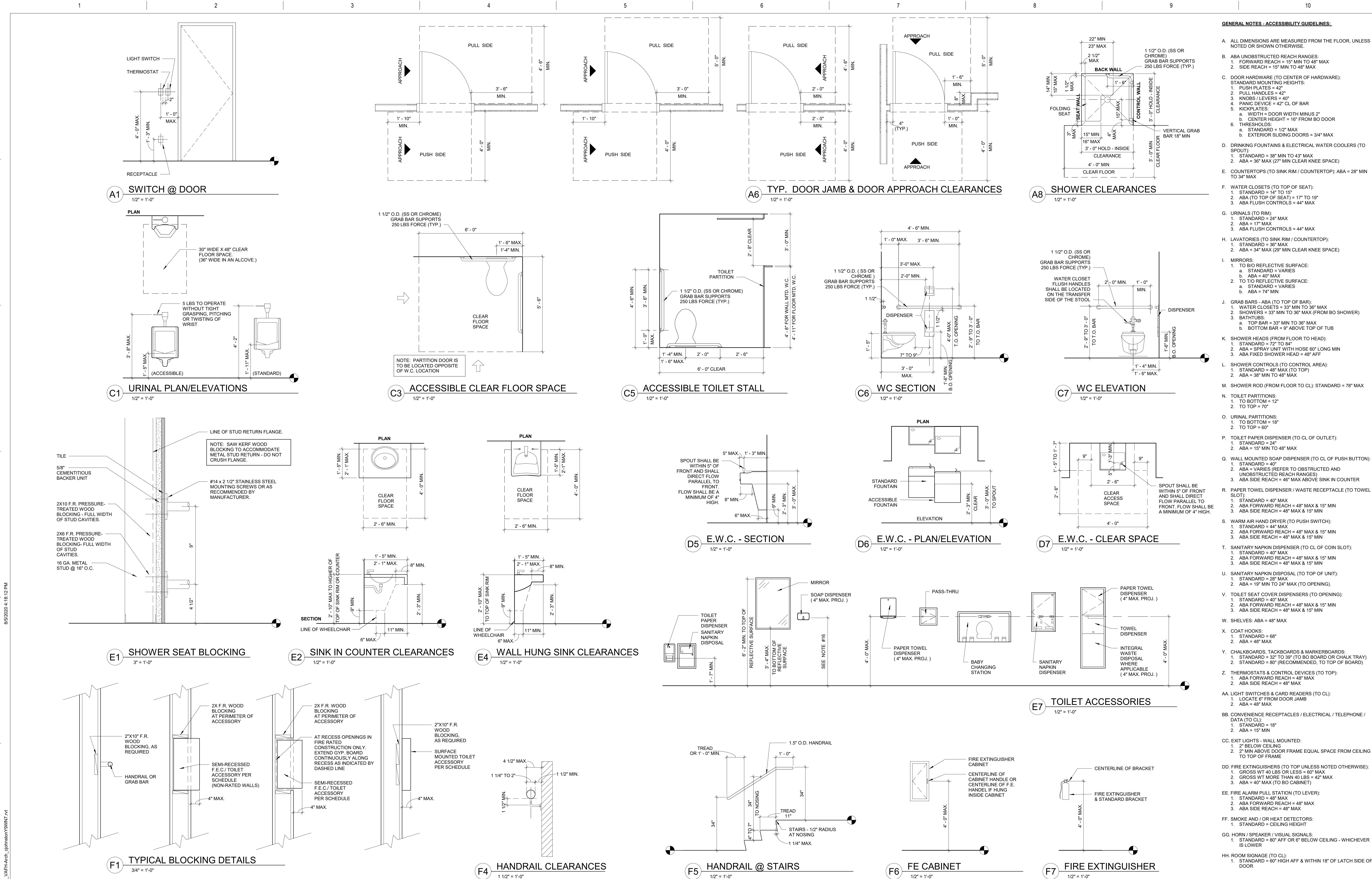
OCCUPANCY SENSOR

FIRE EXIT SIGN

SPRINKLER HEAD

CONSULTANT:		ARCHITECT/ENGINEER OF RECORD:		STAMP:		Drawing Title		Phase		Project Title		Project Number	
HOEFER WYSOCKI		VALHALLA ENGINEERING GROUP, LLC		STATE OF COLORADO MICHAEL P. WANDER P.L.L.C. REGISTERED ARCHITECT 08/05/2020		GENERAL INFORMATION		100% CONSTRUCTION DOCUMENTS		OUTPATIENT MENTAL HEALTH / EDUCATION ADDITION			





CONSULTANT:		ARCHITECT/ENGINEER OF RECORD:		STAMP:		Drawing Title		Phase		Project Title		Project Number	
HOEFER WYSOCKI		VALHALLA ENGINEERING GROUP, LLC		STATE OF COLORADO MICHAEL P. WANDER FLOOR ARCHITECT 08/05/2020		ACCESSIBILITY GUIDELINES		100% CONSTRUCTION DOCUMENTS		OUTPATIENT MENTAL HEALTH / EDUCATION ADDITION		436-114	
Protection Engineering		JIRSA HEDRICK		U.S. Department of Veterans Affairs		Approved: Project Director				Location 3687 Veterans Drive, Fort Harrison, MT 59636		Building Number 173/154	
Issue Date 08/05/2020		Checked MVP		Drawn SB						Drawing Number G1003			