

4 NOT USED

ALL BACKBONE CABLING ROUTES ARE
DIAGRAMMATICAL; CONTRACTOR SHALL ENSURE
A-SIDE AND B-SIDE ROUTING IS AS DIVERSE AS
PRACTICAL. REFERENCE COMMUNICATIONS
DRAWINGS FOR ALL REQUIRED FIBER-OPTIC
CABLING.

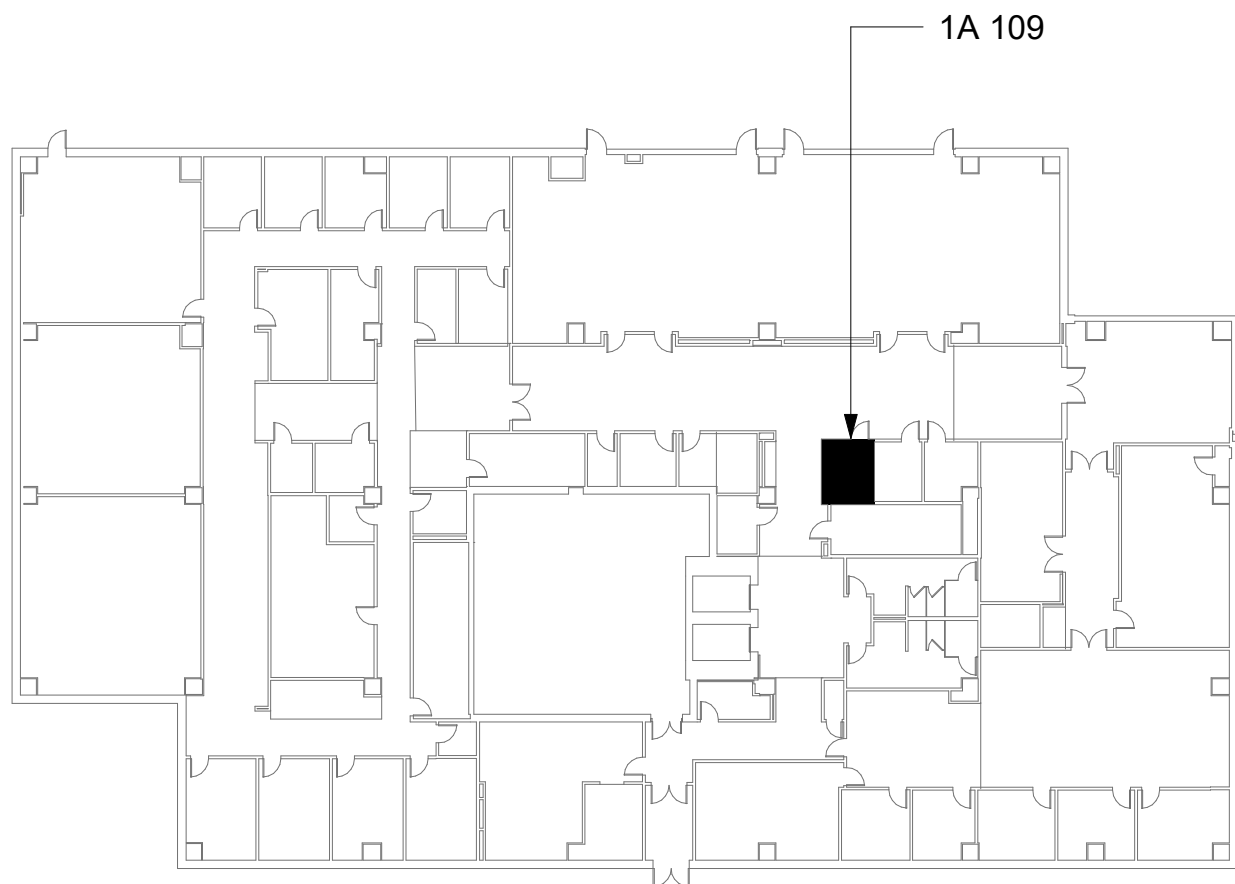
GENERAL NOTES

- ALL EXISTING EQUIPMENT MAY NOT BE SHOWN FOR CLARITY. CONTRACTOR SHALL FIELD VERIFY ALL POWER AND SIGNAL DEVICES AND ASSOCIATED CIRCUITRY AS REQUIRED. ALL RACEWAYS AND CONDUCTORS ASSOCIATED WITH EQUIPMENT TO BE DEMOLISHED SHALL BE DEMOLISHED BACK TO THEIR SOURCE, UNLESS OTHERWISE NOTED.
- PROTECT ALL EXISTING WORK FROM DAMAGE DURING CONSTRUCTION. ANY DAMAGED MATERIALS, SYSTEMS, COMPONENTS, FINISHES BE LIKE, SHALL BE REPAIRED OR REPLACED AT THE EXPENSE OF THE CONTRACTOR TO THE ACCEPTANCE OF THE OWNER.
- SEAL ALL INTERIOR WALL AND CEILING PENETRATIONS TO MATCH EXISTING FIRE RATING OR NEW FIRE RATING, IF REQUIRED. COORDINATE WITH ARCHITECTURAL DRAWINGS AS REQUIRED.
- ALL TELECOMMUNICATIONS CABLING CATEGORY 6 AND BELOW SHALL BE UPGRADED WITH CAT6A PORTS AND CABLE QUANTITIES INDICATED, UNLESS NOTED OTHERWISE.
- TELECOMMUNICATIONS CABLES SHALL BE ROUTED IN EXISTING PATHWAY VACATED BY EXISTING CABLING. PROVIDE RACEWAYS TO EXTEND TO ASSOCIATED TR.
- A TELECOMMUNICATIONS OUTLET UPGRADE SHALL INCLUDE, BUT IS NOT LIMITED TO REMOVING AND DISPOSING EXISTING DEVICES AND CABLES; PROVIDING ALL LABOR, MATERIALS, TOOLS, TEST INSTRUMENTS, AND CONSUMABLES REQUIRED FOR THE INSTALLATION, TERMINATION, TESTING, LABELING, AND CERTIFICATION OF A FULLY FUNCTIONAL CATEGORY 6A OUTLET WITH THE PORT QUANTITY INDICATED.
- CONTRACTOR SHALL PROVIDE, INSTALL, AND TERMINATE HORIZONTAL CAT 6A CABLING FROM EACH WAO (WORK AREA OUTLET) TO ITS RESPECTIVE TR.
- PROVIDE PULL BOXES SIZED PER ANSI/TIA-569 AT 100-FT INTERVALS IN STRAIGHT CONDUIT RUNS, OR CONDUIT CONTAINING BENDS TOTALING MORE THAN 180 DEGREES.
- PROVIDE CONDUITS AND SLEEVES AS REQUIRED FOR ROUTING AND INSTALLATION OF HORIZONTAL AND BACKBONE CABLING. PROVIDE FIRE-STOP MATERIALS TO SEAL IN AND AROUND CONDUIT PER CODE. REFER TO ARCHITECTURAL DRAWINGS FOR PARTITION TYPES AND WALL HEIGHTS.
- OUTLET LOCATIONS ARE APPROXIMATE. DETERMINE EXACT LOCATIONS IN FIELD; DOCUMENT VARIANCES ON AS-BUILT DRAWINGS.
- CONTRACTOR SHALL BE RESPONSIBLE FOR RELOCATING FURNITURE, INCLUDING TRANSPORTATION. FOR ALL WORK TO DESIRED VA STORAGE LOCATION. COORDINATE WITH VA AS REQUIRED.
- ALL DATA CABLING SHALL BE SEGREGATED FROM OTHER SPECIAL SYSTEMS INCLUDING, BUT NOT LIMITED TO, SECURITY, FIRE ALARM, AND NURSE CALL SYSTEMS. WHEN ROUTED THROUGH CONDUIT, DATA CABLING SHALL HAVE ITS OWN RACEWAY. WHEN DATA CABLING IS ROUTED THROUGH A COMMON SPECIAL SYSTEMS CABLE TRAY, CABLING SHALL BE BUNDLED WITH LIKE SYSTEMS. ADDITIONALLY, CABLE TRAYS SHALL BE PROVIDED WITH TRAY DIVIDERS AS REQUIRED TO SEGREGATE SYSTEMS FROM ONE ANOTHER.
- ALL TELECOMMUNICATION ROOMS SHALL BE PROVIDED WITH FIRE-RATED PLYWOOD BACKBOARDS. REFERENCE EXACT PLACEMENTS WITH ARCHITECTURE DRAWINGS AS REQUIRED.
- FIBER-OPTIC CABLING ROUTES AND ASSOCIATED RACEWAYS/ CABLE TRAY ARE DIAGRAMMATICAL. COORDINATE EXACT ROUTING WITH EXISTING CONDITIONS, ARCHITECTURAL FEATURES, MECHANICAL DUCTWORK, PIPING, EQUIPMENT, AND ANY OTHER OBSTRUCTIONS PRIOR TO INSTALLATION.

KEY NOTES

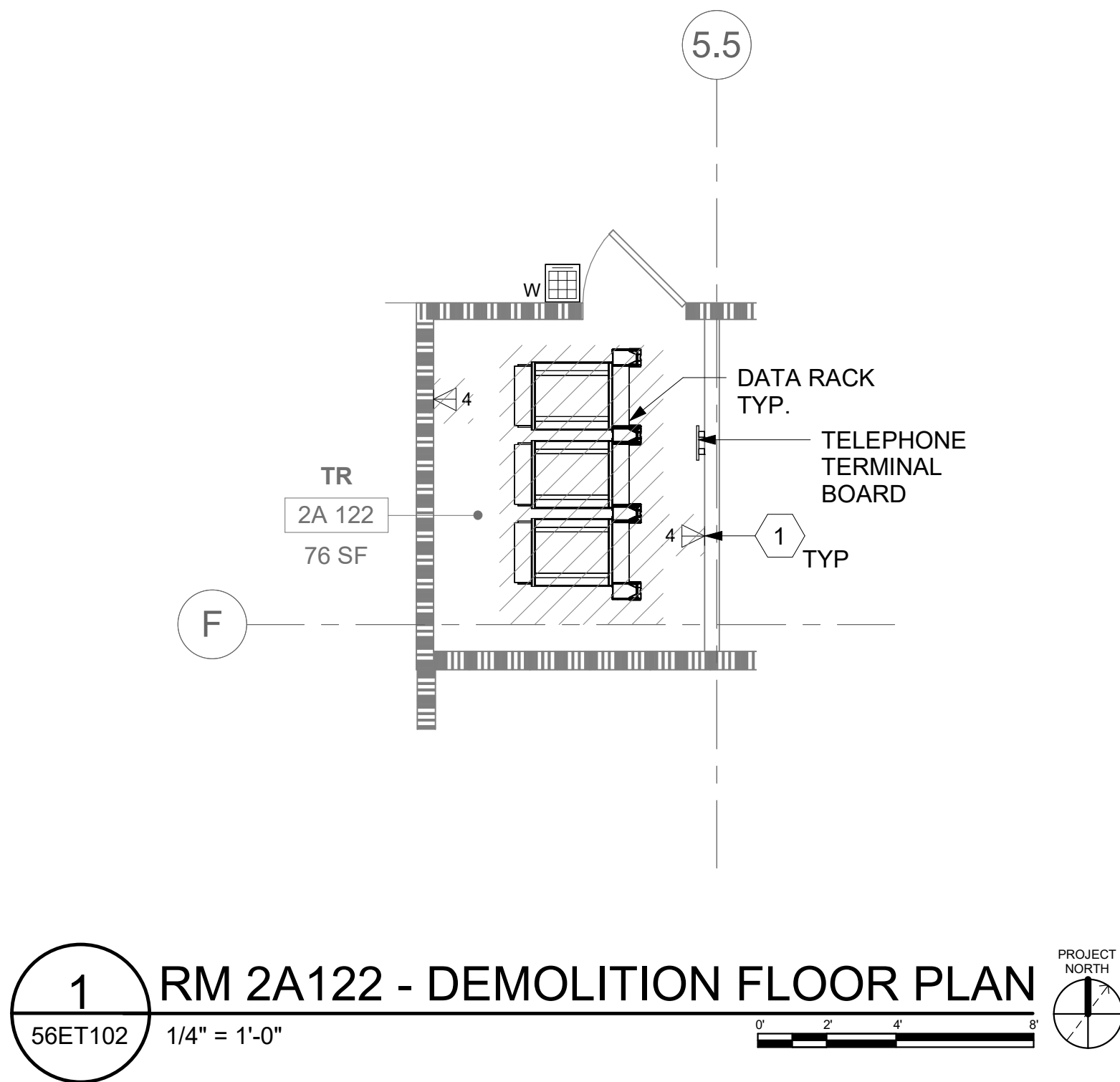
- EXISTING EQUIPMENT TO BE DEMOLISHED. ASSOCIATED RACEWAYS AND CABLING SHALL BE DEMOLISHED BACK TO SOURCE.
- PROVIDE RIGID CONDUIT SLEEVES WITH FIRE PROOFING AS REQUIRED. SLEEVES SHALL BE HILTI QUICK RELEASE SLEEVES, OR REVIEWED EQUAL. REFERENCE DETAIL '2' ON SHEET ET503 FOR ADDITIONAL INFORMATION.

KEY PLAN

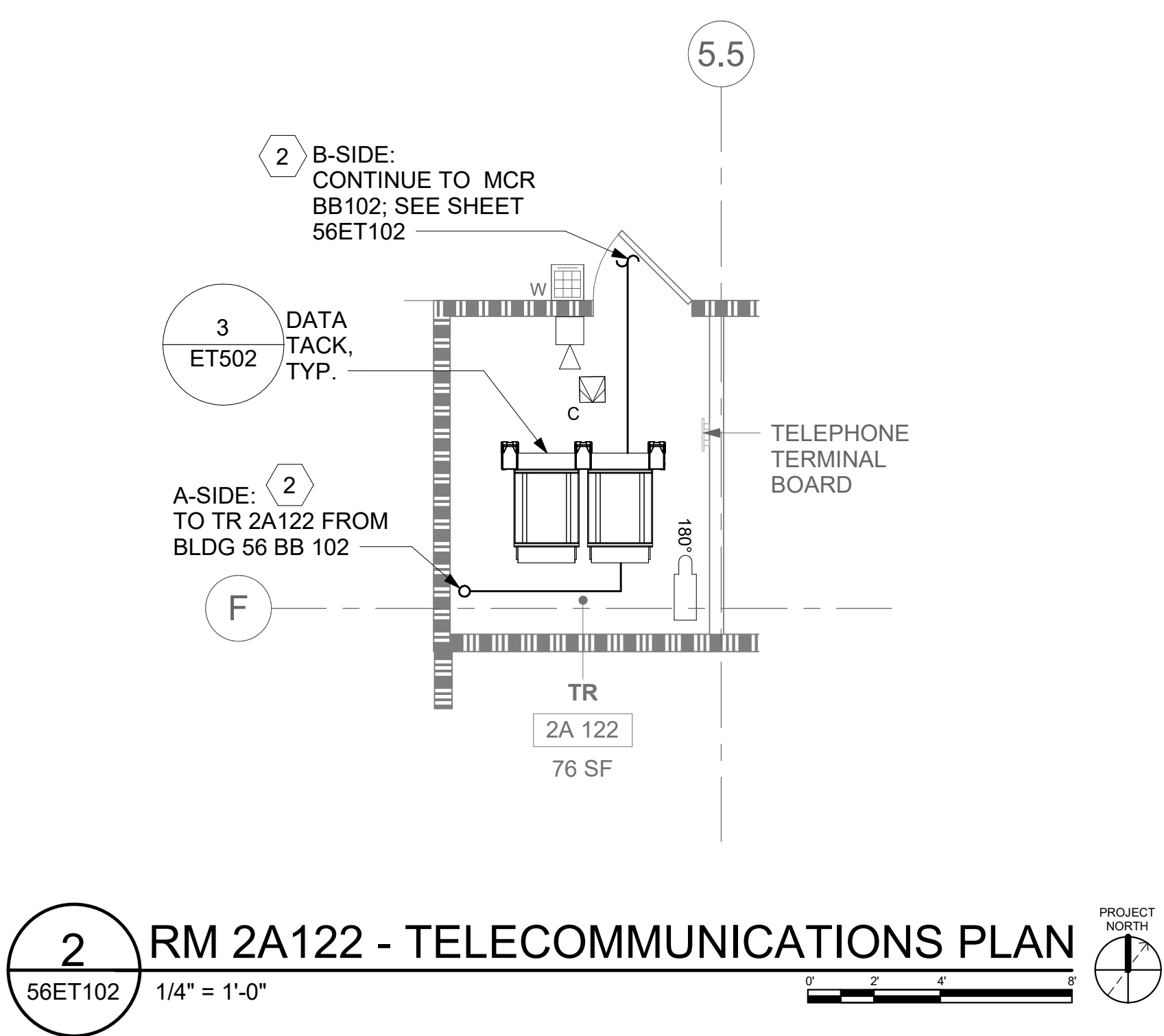


AREA OF WORK

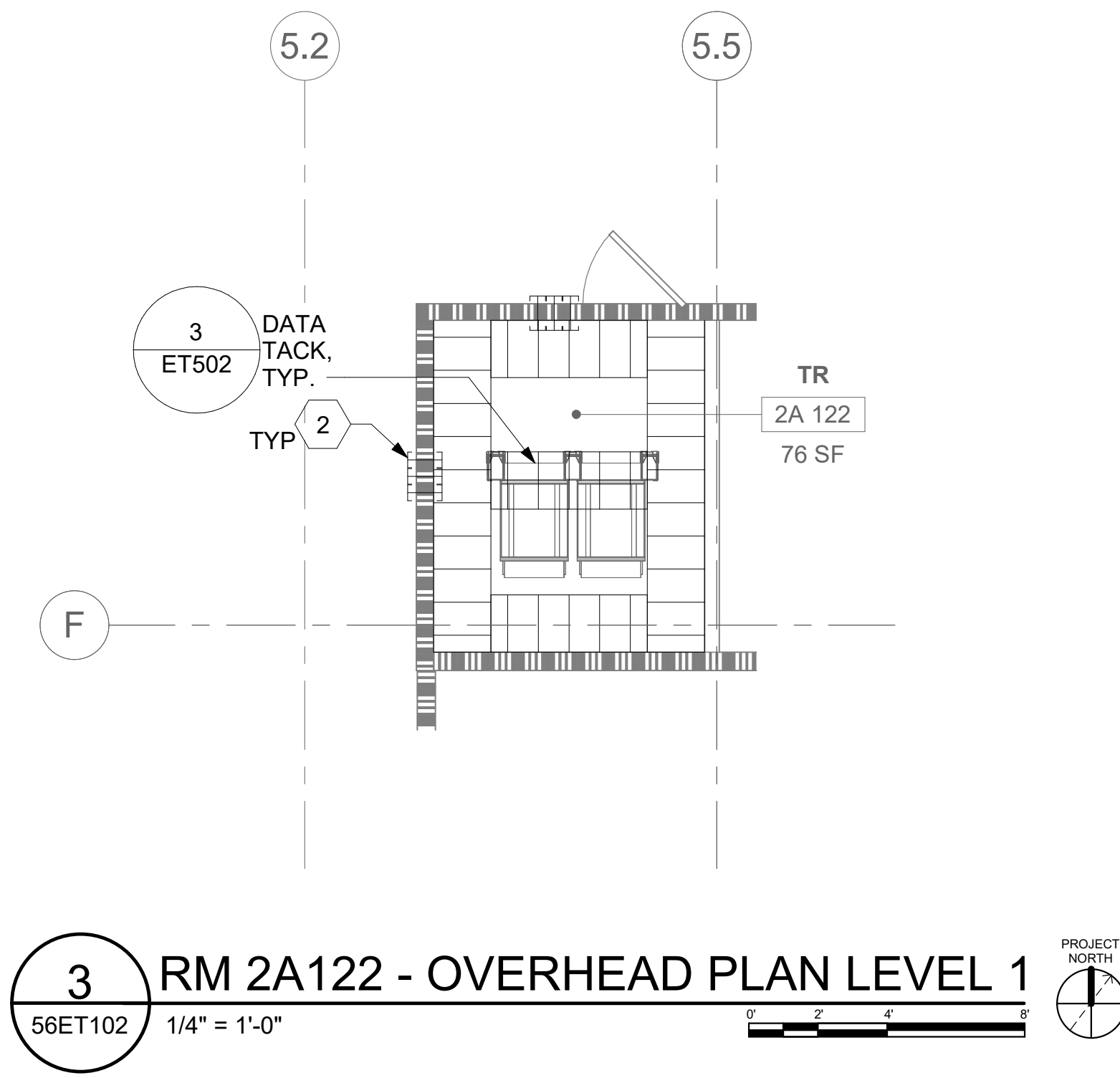
		CONSULTANT	ARCHITECT/ENGINEER OF RECORD	STAMP	Office of Construction and Facilities Management	Drawing Title	Project Title	Phase	CONSTRUCTION DOCUMENTS	Project Title	EHRM INFRASTRUCTURE UPGRADES	Project Number	657-21-701JB		
														Building Number	56
						Approved:		Location		Drawing Number					
								FULLY SPRINKLERED		ST. LOUIS VA MEDICAL CENTER - JEFFERSON BARRACKS, MO		56ET401			
										Issue Date		Checked		Drawn	
										03/31/2022		LRL/WM		JGE/JBB	
Revisions:														419 OF 435	
Date:															



1 RM 2A122 - DEMOLITION FLOOR PLAN
56ET102 1/4" = 1'-0"



2 RM 2A122 - TELECOMMUNICATIONS PLAN
56ET102 1/4" = 1'-0"



3 RM 2A122 - OVERHEAD PLAN LEVEL 1
56ET102 1/4" = 1'-0"

4 NOT USED
-

ALL BACKBONE CABLING ROUTES ARE DIAGRAMMATICAL; CONTRACTOR SHALL ENSURE A-SIDE AND B-SIDE ROUTING IS AS DIVERSE AS PRACTICAL. REFERENCE COMMUNICATIONS DRAWINGS FOR ALL REQUIRED FIBER-OPTIC CABLING.

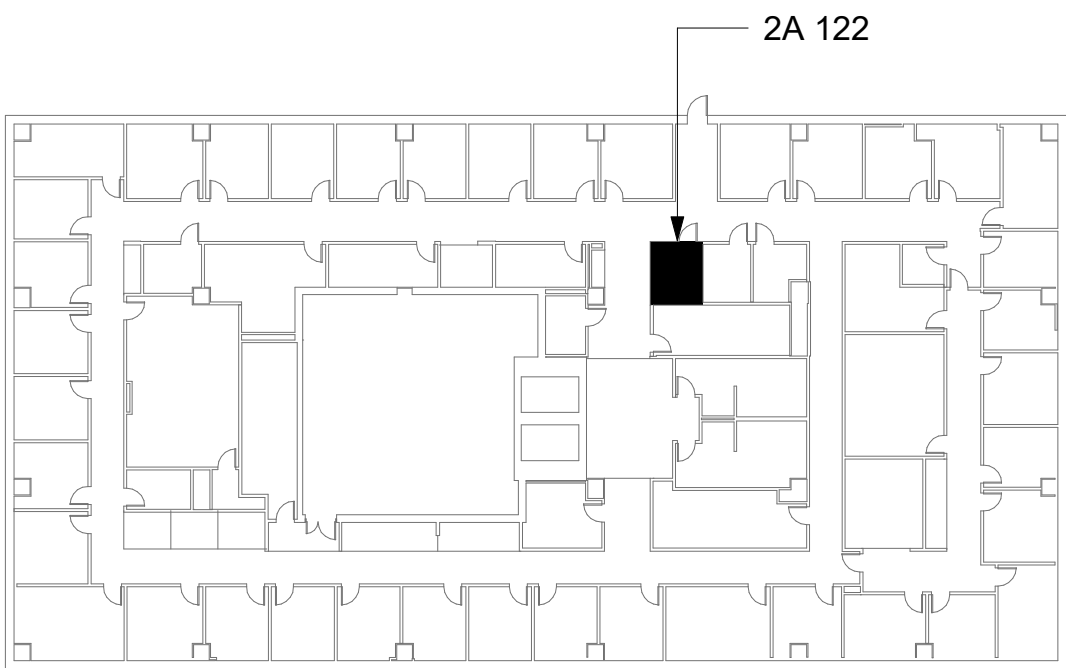
GENERAL NOTES

- ALL EXISTING EQUIPMENT MAY NOT BE SHOWN FOR CLARITY. CONTRACTOR SHALL FIELD VERIFY ALL POWER AND SIGNAL DEVICES AND ASSOCIATED CIRCUITRY AS REQUIRED. ALL RACEWAYS AND CONDUCTORS ASSOCIATED WITH EQUIPMENT TO BE DEMOLISHED SHALL BE DEMOLISHED BACK TO THEIR SOURCE, UNLESS OTHERWISE NOTED.
- PROTECT ALL EXISTING WORK FROM DAMAGE DURING CONSTRUCTION. ANY DAMAGED MATERIALS, SYSTEMS, COMPONENTS, FINISHES BE LIKE, SHALL BE REPAIRED OR REPLACED AT THE EXPENSE OF THE CONTRACTOR TO THE ACCEPTANCE OF THE OWNER.
- SEAL ALL INTERIOR WALL AND CEILING PENETRATIONS TO MATCH EXISTING FIRE RATING OR NEW FIRE RATING, IF REQUIRED. COORDINATE WITH ARCHITECTURAL DRAWINGS AS REQUIRED.
- ALL TELECOMMUNICATIONS CABLING CATEGORY 6 AND BELOW SHALL BE UPGRADED WITH CAT6A PORTS AND CABLE QUANTITIES INDICATED, UNLESS NOTED OTHERWISE.
- TELECOMMUNICATIONS CABLES SHALL BE ROUTED IN EXISTING PATHWAY VACATED BY EXISTING CABLING. PROVIDE RACEWAYS TO EXTEND TO ASSOCIATED TR.
- A TELECOMMUNICATIONS OUTLET UPGRADE SHALL INCLUDE, BUT IS NOT LIMITED TO REMOVING AND DISPOSING EXISTING DEVICES AND CABLES; PROVIDING ALL LABOR, MATERIALS, TOOLS, TEST INSTRUMENTS, AND CONSUMABLES REQUIRED FOR THE INSTALLATION, TERMINATION, TESTING, LABELING, AND CERTIFICATION OF A FULLY FUNCTIONAL CATEGORY 6A OUTLET WITH THE PORT QUANTITY INDICATED.
- CONTRACTOR SHALL PROVIDE, INSTALL, AND TERMINATE HORIZONTAL CAT 6A CABLING FROM EACH WAO (WORK AREA OUTLET) TO ITS RESPECTIVE TR.
- PROVIDE PULL BOXES SIZED PER ANSI/TIA-569 AT 100-FT INTERVALS IN STRAIGHT CONDUIT RUNS, OR CONDUIT CONTAINING BENDS TOTALING MORE THAN 180 DEGREES.
- PROVIDE CONDUITS AND SLEEVES AS REQUIRED FOR ROUTING AND INSTALLATION OF HORIZONTAL AND BACKBONE CABLING. PROVIDE FIRE-STOP MATERIALS TO SEAL IN AND AROUND CONDUIT PER CODE. REFER TO ARCHITECTURAL DRAWINGS FOR PARTITION TYPES AND WALL HEIGHTS.
- OUTLET LOCATIONS ARE APPROXIMATE. DETERMINE EXACT LOCATIONS IN FIELD; DOCUMENT VARIANCES ON AS-BUILT DRAWINGS.
- CONTRACTOR SHALL BE RESPONSIBLE FOR RELOCATING FURNITURE, INCLUDING TRANSPORTATION, FOR ALL WORK TO DESIRED VA STORAGE LOCATION. COORDINATE WITH VA AS REQUIRED.
- ALL DATA CABLING SHALL BE SEGREGATED FROM OTHER SPECIAL SYSTEMS INCLUDING, BUT NOT LIMITED TO, SECURITY, FIRE ALARM, AND NURSE CALL SYSTEMS. WHEN ROUTED THROUGH CONDUIT, DATA CABLING SHALL HAVE ITS OWN RACEWAY. WHEN DATA CABLING IS ROUTED THROUGH A COMMON SPECIAL SYSTEMS CABLE TRAY, CABLING SHALL BE BUNDLED WITH LIKE SYSTEMS. ADDITIONALLY, CABLE TRAYS SHALL BE PROVIDED WITH TRAY DIVIDERS AS REQUIRED TO SEGREGATE SYSTEMS FROM ONE ANOTHER.
- ALL TELECOMMUNICATION ROOMS SHALL BE PROVIDED WITH FIRE-RATED PLYWOOD BACKBOARDS. REFERENCE EXACT PLACEMENTS WITH ARCHITECTURE DRAWINGS AS REQUIRED.
- FIBER-OPTIC CABLING ROUTES AND ASSOCIATED RACEWAYS/ CABLE TRAY ARE DIAGRAMMATICAL. COORDINATE EXACT ROUTING WITH EXISTING CONDITIONS, ARCHITECTURAL FEATURES, MECHANICAL DUCTWORK, PIPING, EQUIPMENT, AND ANY OTHER OBSTRUCTIONS PRIOR TO INSTALLATION.

KEY NOTES

- EXISTING EQUIPMENT TO BE DEMOLISHED. ASSOCIATED RACEWAYS AND CABLING SHALL BE DEMOLISHED BACK TO SOURCE.
- PROVIDE RIGID CONDUIT SLEEVES WITH FIRE PROOFING AS REQUIRED. SLEEVES SHALL BE HILTI QUICK RELEASE SLEEVES, OR REVIEWED EQUAL. REFERENCE DETAIL '2' ON SHEET ET503 FOR ADDITIONAL INFORMATION.

KEY PLAN



AREA OF WORK

--	--	--	--	--	--	--	--	--	--	--	--	--	--	--	--	--	--	--	--	--	--	--	--	--	--	--	--	--	--	--	--	--	--	--	--	--	--	--	--	--	--	--	--	--	--	--	--	--	--	--	--	--	--	--	--	--	--	--	--	--	--	--	--	--	--	--	--	--	--	--	--	--	--	--	--	--	--	--	--	--	--	--	--	--	--	--	--	--	--	--	--	--	--	--	--	--	--	--	--	--	--	--	--	--	--	--	--	--	--	--	--	--	--	--	--	--	--	--	--	--	--	--	--	--	--	--	--	--	--	--	--	--	--	--	--	--	--	--	--	--	--	--	--	--	--	--	--	--	--	--	--	--	--	--	--	--	--	--	--	--	--	--	--	--	--	--	--	--	--	--	--	--	--	--	--	--	--	--	--	--	--	--	--	--	--	--	--	--	--	--	--	--	--	--	--	--	--	--	--	--	--	--	--	--	--	--	--	--	--	--	--	--	--	--	--	--	--	--	--	--	--	--	--	--	--	--	--	--	--	--	--	--	--	--	--	--	--	--	--	--	--	--	--	--	--	--	--	--	--	--	--	--	--	--	--	--	--	--	--	--	--	--	--	--	--	--	--	--	--	--	--	--	--	--	--	--	--	--	--	--	--	--	--	--	--	--	--	--	--	--	--	--	--	--	--	--	--	--	--	--	--	--	--	--	--	--	--	--	--	--	--	--	--	--	--	--	--	--	--	--	--	--	--	--	--	--	--	--	--	--	--	--	--	--	--	--	--	--	--	--	--	--	--	--	--	--	--	--	--	--	--	--	--	--	--	--	--	--	--	--	--	--	--	--	--	--	--	--	--	--	--	--	--	--	--	--	--	--	--	--	--	--	--	--	--	--	--	--	--	--	--	--	--	--	--	--	--	--	--	--	--	--	--	--	--	--	--	--	--	--	--	--	--	--	--	--	--	--	--	--	--	--	--	--	--	--	--	--	--	--	--	--	--	--	--	--	--	--	--	--	--	--	--	--	--	--	--	--	--	--	--	--	--	--	--	--	--	--	--	--	--	--	--	--	--	--	--	--	--	--	--	--	--	--	--	--	--	--	--	--	--	--	--	--	--	--	--	--	--	--	--	--	--	--	--	--	--	--	--	--	--	--	--	--	--	--	--	--	--	--	--	--	--	--	--	--	--	--	--	--	--	--	--	--	--	--	--	--	--	--	--	--	--	--	--	--	--	--	--	--	--	--	--	--	--	--	--	--	--	--	--	--	--	--	--	--	--	--	--	--	--	--	--	--	--	--	--	--	--	--	--	--	--	--	--	--	--	--	--	--	--	--	--	--	--	--	--	--	--	--	--	--	--	--	--	--	--	--	--	--	--	--	--	--	--	--	--	--	--	--	--	--	--	--	--	--	--	--	--	--	--	--	--	--	--	--	--	--	--	--	--	--	--	--	--	--	--	--	--	--	--	--	--	--	--	--	--	--	--	--	--	--	--	--	--	--	--	--	--	--	--	--	--	--	--	--	--	--	--	--	--	--	--	--	--	--	--	--	--	--	--	--	--	--	--	--	--	--	--	--	--	--	--	--	--	--	--	--	--	--	--	--	--	--	--	--	--	--	--	--	--	--	--	--	--	--	--	--	--	--	--	--	--	--	--	--	--	--	--	--	--	--	--	--	--	--	--	--	--	--	--	--	--	--	--	--	--	--	--	--	--	--	--	--	--	--	--	--	--	--	--	--	--	--	--	--	--	--	--	--	--	--	--	--	--	--	--	--	--	--	--	--	--	--	--	--	--	--	--	--	--	--	--	--	--	--	--	--	--	--	--	--	--	--	--	--	--	--	--	--	--	--	--	--	--	--	--	--	--	--	--	--	--	--	--	--	--	--	--	--	--	--	--	--	--	--	--	--	--	--	--	--	--	--	--	--	--	--	--	--	--	--	--	--	--	--	--	--	--	--	--	--	--	--	--	--	--	--	--	--	--	--	--	--	--	--	--	--	--	--	--	--	--	--	--	--	--	--	--	--	--	--	--	--	--	--	--	--	--	--	--	--	--	--	--	--	--	--	--	--	--	--	--	--	--	--	--	--	--	--	--	--	--	--	--	--	--	--	--	--	--	--	--	--	--	--	--	--	--	--	--	--	--	--	--	--	--	--	--	--	--	--	--	--	--	--	--	--	--	--	--	--	--	--	--	--	--	--	--	--	--	--	--	--	--	--	--	--	--	--	--	--	--	--	--	--	--	--	--	--	--	--	--	--	--	--	--	--	--	--	--	--	--	--	--	--	--	--	--	--	--	--	--	--	--	--	--	--	--	--	--	--	--	--	--	--	--	--	--	--	--	--	--	--	--	--	--	--	--	--	--	--	--	--	--	--	--	--	--	--	--	--	--	--	--	--	--	--	--	--	--	--	--	--	--	--	--	--	--	--	--	--	--	--	--	--	--	--	--	--	--	--	--	--	--	--	--	--	--	--	--	--	--	--	--	--	--	--	--	--	--	--	--	--	--	--	--	--	--	--	--	--	--	--	--	--	--	--	--	--	--	--	--	--	--	--	--	--	--	--	--	--	--	--	--	--	--	--	--	--	--	--	--	--	--	--	--	--	--	--	--	--	--	--	--	--	--	--	--	--	--	--	--	--	--	--	--	--	--	--	--	--	--	--	--	--	--	--	--	--	--	--	--	--	--	--	--	--	--	--	--	--	--	--	--	--	--	--	--	--	--	--	--	--	--	--	--	--	--	--	--	--	--	--	--	--	--	--	--	--	--	--	--	--	--	--	--	--	--	--	--	--	--	--	--	--	--	--	--	--	--	--	--	--	--	--	--	--	--	--	--	--	--	--	--	--	--	--	--	--	--	--	--	--	--	--	--	--	--	--	--	--	--	--	--	--	--	--	--	--	--	--	--	--	--	--	--	--	--	--	--	--	--	--	--	--	--	--	--	--	--	--	--	--	--	--	--	--	--	--	--	--	--	--	--	--	--	--	--	--	--	--	--	--	--	--	--	--	--	--	--	--	--	--	--	--	--	--	--	--	--	--	--	--	--	--	--	--	--	--	--	--	--	--	--	--	--	--	--	--	--	--	--	--	--	--

ENT MAY NOT BE SHOWN FOR CLARI

- | | |
|---|---|
| 1 | EXISTING EQUIPMENT TO BE DEMOLISHED. ASSOCIATED RACEWAYS AND CAB SHALL BE DEMOLISHED BACK TO SOURCE. |
| 2 | PROVIDE RIGID CONDUIT SLEEVES WITH FIRE PROOFING AS REQUIRED. SLEEVE SHALL BE HILTI QUICK RELEASE SLEEVES, OR REVIEWED EQUAL. REFERENCE DETAIL '2' ON SHEET ET503 FOR ADDITIONAL INFORMATION. |

BE DEMOLISHED. ASSO

- 2 PROVIDE RIGID CONDUIT SLEEVES WITH FIRE PROOFING AS REQUIRED. SLEEVES SHALL BE HILTI QUICK RELEASE SLEEVES, OR REVIEWED EQUAL. REFERENCE DETAIL '2' ON SHEET ET503 FOR ADDITIONAL INFORMATION.



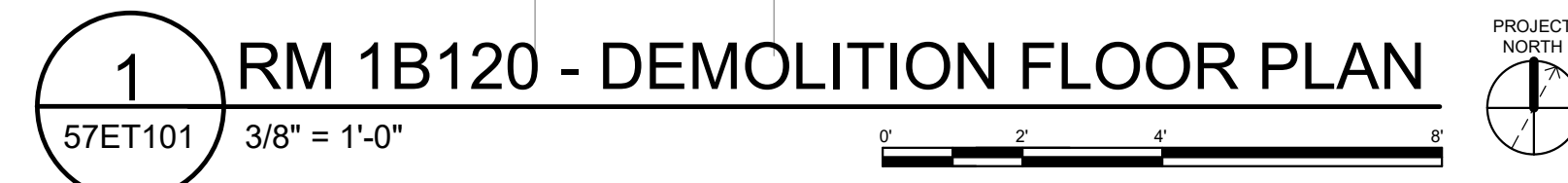
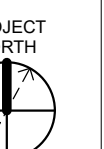
4 NOT USED

VA FORM 08 - 6231									
1	2	3	4	5	6	7	8	9	10

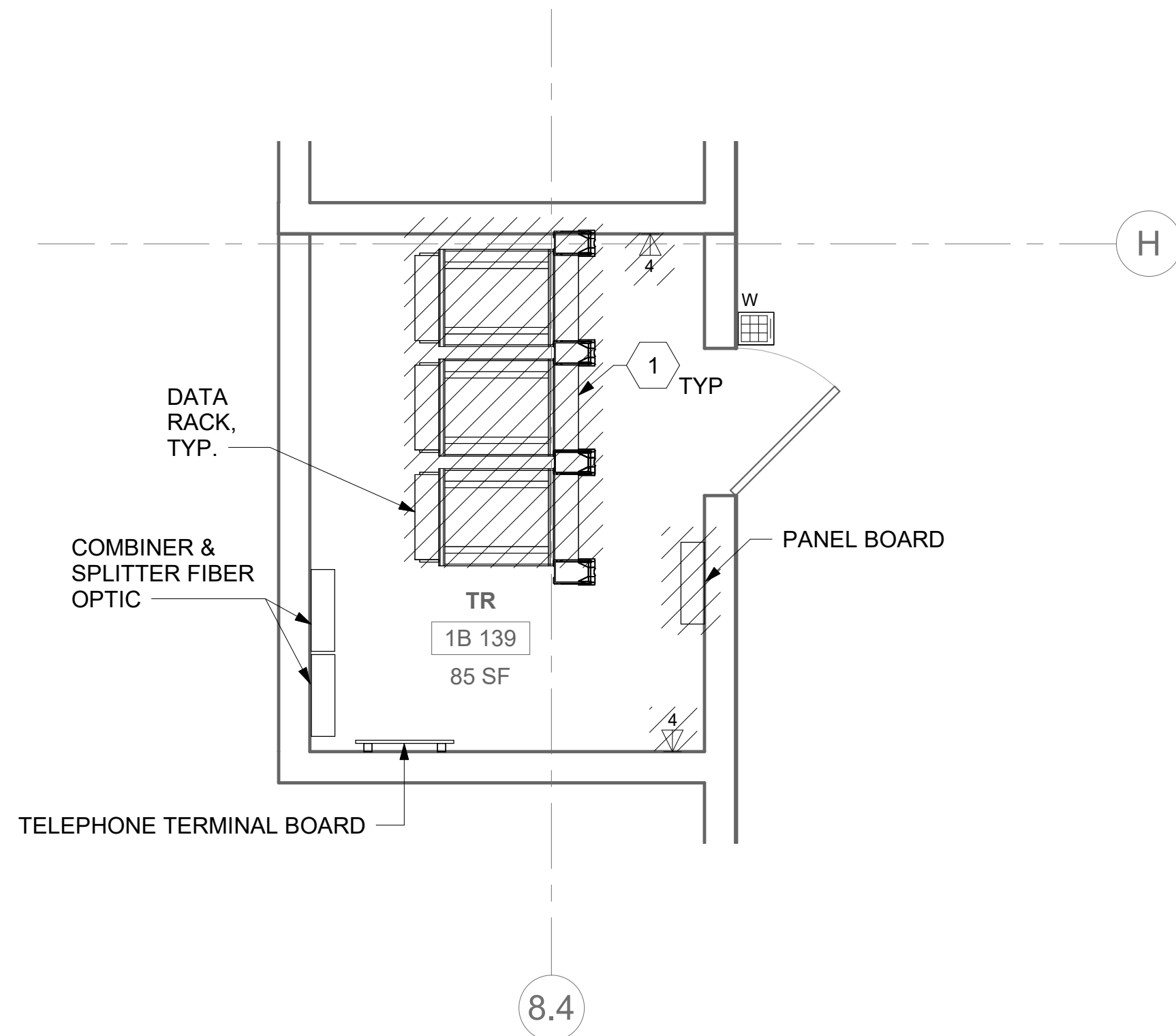
KEY NOTES

- | | |
|---|--|
| 1 | EXISTING EQUIPMENT TO BE DEMOLISHED. ASSOCIATED RACEWAYS AND CABLING SHALL BE DEMOLISHED BACK TO SOURCE. |
| 2 | PROVIDE RIGID CONDUIT SLEEVES WITH FIRE PROOFING AS REQUIRED. SLEEVES SHALL BE HILTI QUICK RELEASE SLEEVES, OR REVIEWED EQUAL. REFERENCE DETAIL '2' ON SHEET ET503 FOR ADDITIONAL INFORMATION. |

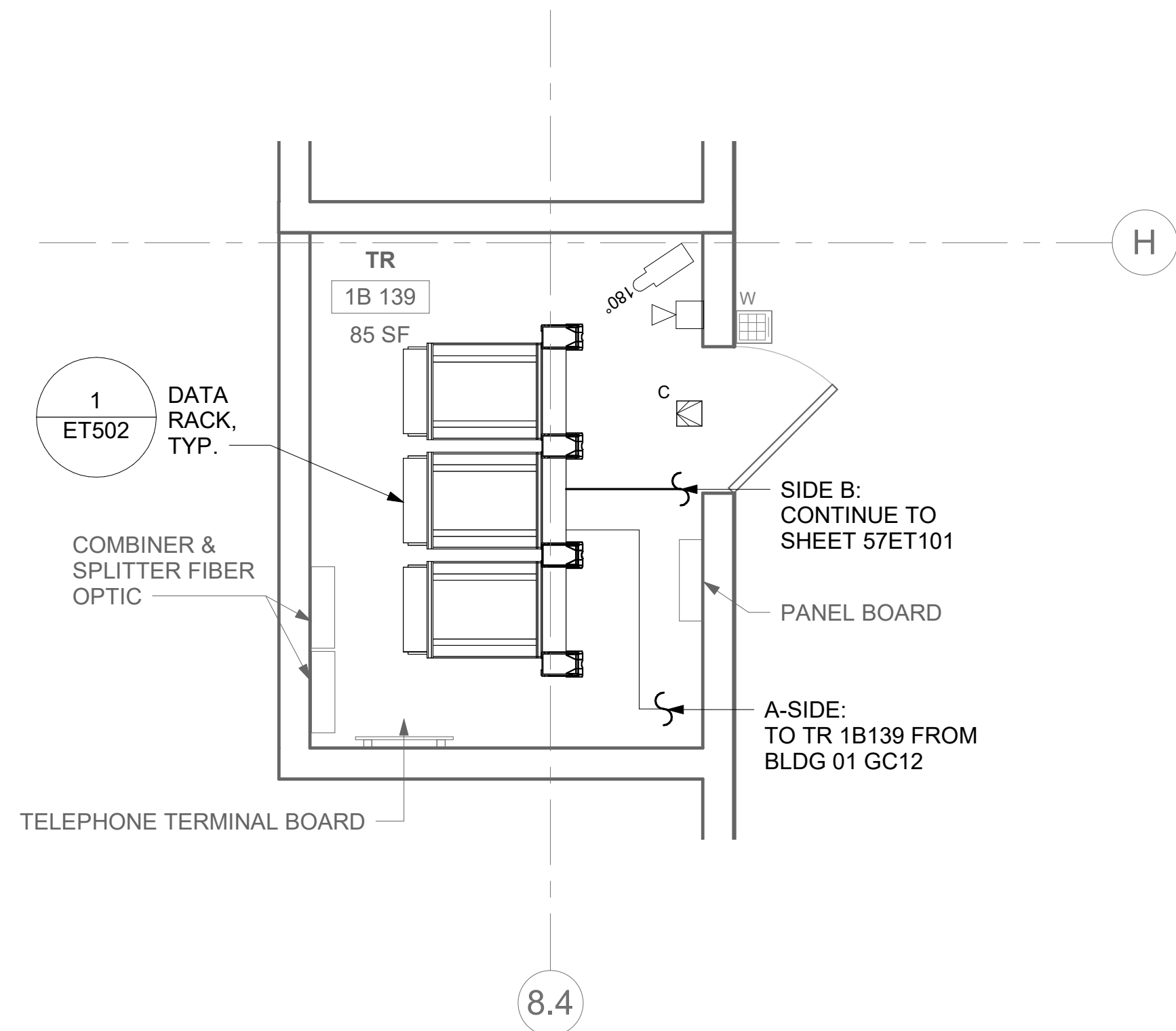
KEY PLAN



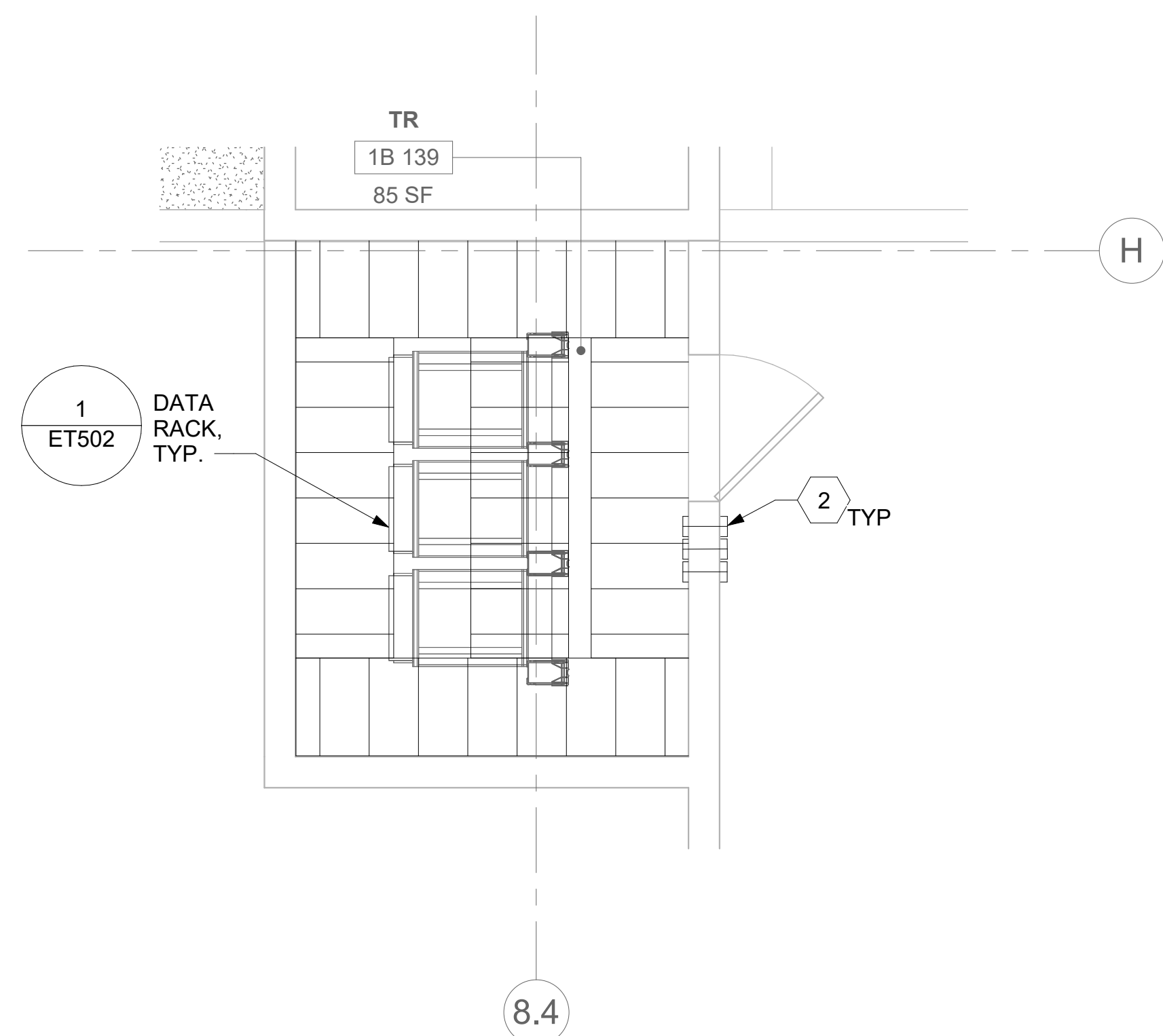
4 NOT USED



1 RM 1B139 - DEMOLITION FLOOR PLAN
57ET101 3/8" = 1'-0"



2 RM 1B139 - TELECOMMUNICATIONS PLAN
57ET101 3/8" = 1'-0"



3 RM 1B139 - OVERHEAD PLAN LEVEL 1
57ET101 3/8" = 1'-0"

ALL BACKBONE CABLING ROUTES ARE
DIAGRAMMATICAL; CONTRACTOR SHALL
ENSURE A-SIDE AND B-SIDE ROUTING IS
AS DIVERSE AS PRACTICAL. REFERENCE
COMMUNICATIONS DRAWINGS FOR ALL
REQUIRED FIBER-OPTIC CABLING.

4 NOT USED

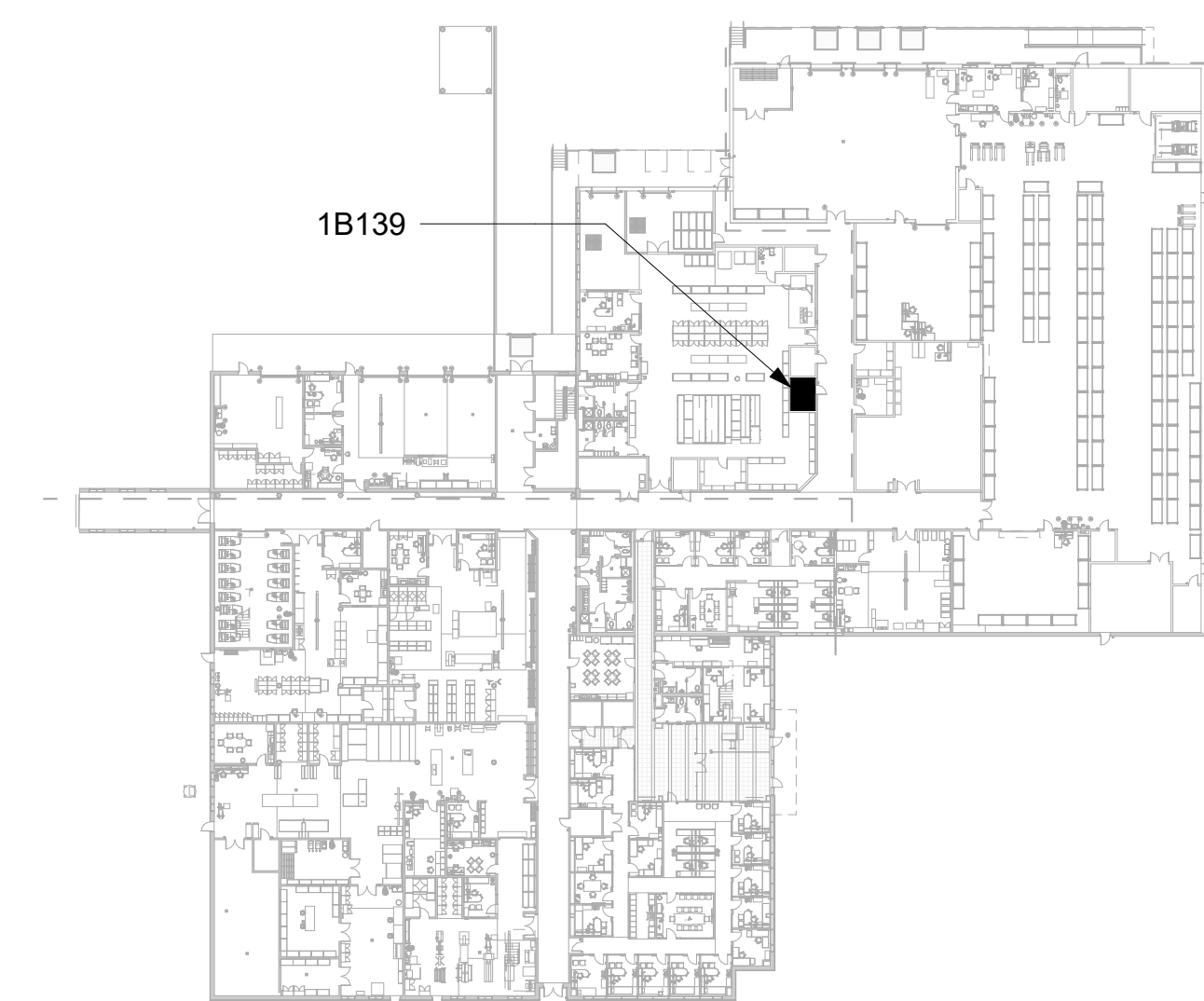
GENERAL NOTES

- ALL EXISTING EQUIPMENT MAY NOT BE SHOWN FOR CLARITY. CONTRACTOR SHALL FIELD VERIFY ALL POWER AND SIGNAL DEVICES AND ASSOCIATED CIRCUITRY AS REQUIRED. ALL RACEWAYS AND CONDUCTORS ASSOCIATED WITH EQUIPMENT TO BE DEMOLISHED SHALL BE DEMOLISHED BACK TO THEIR SOURCE, UNLESS OTHERWISE NOTED.
- PROTECT ALL EXISTING WORK FROM DAMAGE DURING CONSTRUCTION. ANY DAMAGED MATERIALS, SYSTEMS, COMPONENTS, FINISHES BE LIKE, SHALL BE REPAIRED OR REPLACED AT THE EXPENSE OF THE CONTRACTOR TO THE ACCEPTANCE OF THE OWNER.
- SEAL ALL INTERIOR WALL AND CEILING PENETRATIONS TO MATCH EXISTING FIRE RATING OR NEW FIRE RATING, IF REQUIRED. COORDINATE WITH ARCHITECTURAL DRAWINGS AS REQUIRED.
- ALL TELECOMMUNICATIONS CABLING CATEGORY 5E AND BELOW SHALL BE UPGRADED WITH CAT6A PORTS AND CABLE QUANTITIES INDICATED, UNLESS NOTED OTHERWISE.
- TELECOMMUNICATIONS CABLES SHALL BE ROUTED IN EXISTING PATHWAY VACATED BY EXISTING CABLING. PROVIDE RACEWAYS TO EXTEND TO ASSOCIATED TR.
- A TELECOMMUNICATIONS OUTLET UPGRADE SHALL INCLUDE, BUT IS NOT LIMITED TO REMOVING AND DISPOSING EXISTING DEVICES AND CABLES, PROVIDING ALL LABOR, MATERIALS, TOOLS, TEST INSTRUMENTS, AND CONSUMABLES REQUIRED FOR THE INSTALLATION, TERMINATION, TESTING, LABELING, AND CERTIFICATION OF A FULLY FUNCTIONAL CATEGORY 6A OUTLET WITH THE PORT QUANTITY INDICATED.
- PROVIDE 1" CONDUIT FROM NEW BACKBOX TO ACCESSIBLE CEILING SPACE FOR ALL OUTLETS IDENTIFIED AS NEW.
- PROVIDE PULL BOXES SIZED PER ANSI/TIA-569 AT 100-FT INTERVALS IN STRAIGHT CONDUIT RUNS, OR CONDUIT CONTAINING BENDS TOTALING MORE THAN 180 DEGREES.
- PROVIDE CONDUITS AND SLEEVES AS REQUIRED FOR ROUTING AND INSTALLATION OF HORIZONTAL AND BACKBONE CABLING. PROVIDE FIRE-STOP MATERIALS TO SEAL IN AND AROUND CONDUIT PER CODE. REFER TO ARCHITECTURAL DRAWINGS FOR PARTITION TYPES AND WALL HEIGHTS.
- OUTLET LOCATIONS ARE APPROXIMATE. DETERMINE EXACT LOCATIONS IF FIELD; DOCUMENT VARIANCES ON AS-BUILT DRAWINGS.
- CONTRACTOR SHALL BE RESPONSIBLE FOR RELOCATING FURNITURE, INCLUDING TRANSPORTATION, FOR ALL WORK TO DESIRED VA STORAGE LOCATION. COORDINATE WITH VA AS REQUIRED.
- ALL DATA CABLING SHALL BE SEGREGATED FROM OTHER SPECIAL SYSTEMS INCLUDING, BUT NOT LIMITED TO, SECURITY, FIRE ALARM, AND NURSE CALL SYSTEMS. WHEN ROUTED THROUGH CONDUIT, DATA CABLING SHALL HAVE ITS OWN RACEWAY. WHEN DATA CABLING IS ROUTED THROUGH A COMMON SPECIAL SYSTEMS CABLE TRAY, CABLING SHALL BE BUNDLED WITH LIKE SYSTEMS. ADDITIONALLY, CABLE TRAYS SHALL BE PROVIDED WITH TRAY DIVIDERS AS REQUIRED TO SEGREGATE SYSTEMS FROM ONE ANOTHER.
- ALL TELECOMMUNICATION ROOMS SHALL BE PROVIDED WITH FIRE-RATED PLYWOOD BACKBOARDS. REFERENCE EXACT PLACEMENTS WITH ARCHITECTURE DRAWINGS AS REQUIRED.
- FIBER-OPTIC CABLING ROUTES AND ASSOCIATED RACEWAYS/ CABLE TRAY ARE DIAGRAMMATICAL. COORDINATE EXACT ROUTING WITH EXISTING CONDITIONS, ARCHITECTURAL FEATURES, MECHANICAL DUCTWORK, PIPING, EQUIPMENT, AND ANY OTHER OBSTRUCTIONS PRIOR TO INSTALLATION.

KEY NOTES

- EXISTING EQUIPMENT TO BE DEMOLISHED. ASSOCIATED RACEWAYS AND CABLING SHALL BE DEMOLISHED BACK TO SOURCE.
- PROVIDE RIGID CONDUIT SLEEVES WITH FIRE PROOFING AS REQUIRED. SLEEVES SHALL BE HILTI QUICK RELEASE SLEEVES, OR REVIEWED EQUAL. REFERENCE DETAIL '2' ON SHEET ET503 FOR ADDITIONAL INFORMATION.

KEY PLAN



AREA OF WORK

--	--	--	--	--	--	--	--	--	--	--	--	--	--	--	--	--	--	--	--	--	--	--	--	--	--	--	--	--	--	--	--	--	--	--	--	--	--	--	--	--	--	--	--	--	--	--	--	--	--	--	--	--	--	--	--	--	--	--	--	--	--	--	--	--	--	--	--	--	--	--	--	--	--	--	--	--	--	--	--	--	--	--	--	--	--	--	--	--	--	--	--	--	--	--	--	--	--	--	--	--	--	--	--	--	--	--	--	--	--	--	--	--	--	--	--	--	--	--	--	--	--	--	--	--	--	--	--	--	--	--	--	--	--	--	--	--	--	--	--	--	--	--	--	--	--	--	--	--	--	--	--	--	--	--	--	--	--	--	--	--	--	--	--	--	--	--	--	--	--	--	--	--	--	--	--	--	--	--	--	--	--	--	--	--	--	--	--	--	--	--	--	--	--	--	--	--	--	--	--	--	--	--	--	--	--	--	--	--	--	--	--	--	--	--	--	--	--	--	--	--	--	--	--	--	--	--	--	--	--	--	--	--	--	--	--	--	--	--	--	--	--	--	--	--	--	--	--	--	--	--	--	--	--	--	--	--	--	--	--	--	--	--	--	--	--	--	--	--	--	--	--	--	--	--	--	--	--	--	--	--	--	--	--	--	--	--	--	--	--	--	--	--	--	--	--	--	--	--	--	--	--	--	--	--	--	--	--	--	--	--	--	--	--	--	--	--	--	--	--	--	--	--	--	--	--	--	--	--	--	--	--	--	--	--	--	--	--	--	--	--	--	--	--	--	--	--	--	--	--	--	--	--	--	--	--	--	--	--	--	--	--	--	--	--	--	--	--	--	--	--	--	--	--	--	--	--	--	--	--	--	--	--	--	--	--	--	--	--	--	--	--	--	--	--	--	--	--	--	--	--	--	--	--	--	--	--	--	--	--	--	--	--	--	--	--	--	--	--	--	--	--	--	--	--	--	--	--	--	--	--	--	--	--	--	--	--	--	--	--	--	--	--	--	--	--	--	--	--	--	--	--	--	--	--	--	--	--	--	--	--	--	--	--	--	--	--	--	--	--	--	--	--	--	--	--	--	--	--	--	--	--	--	--	--	--	--	--	--	--	--	--	--	--	--	--	--	--	--	--	--	--	--	--	--	--	--	--	--	--	--	--	--	--	--	--	--	--	--	--	--	--	--	--	--	--	--	--	--	--	--	--	--	--	--	--	--	--	--	--	--	--	--	--	--	--	--	--	--	--	--	--	--	--	--	--	--	--	--	--	--	--	--	--	--	--	--	--	--	--	--	--	--	--	--	--	--	--	--	--	--	--	--	--	--	--	--	--	--	--	--	--	--	--	--	--	--	--	--	--	--	--	--	--	--	--	--	--	--	--	--	--	--	--	--	--	--	--	--	--	--	--	--	--	--	--	--	--	--	--	--	--	--	--	--	--	--	--	--	--	--	--	--	--	--	--	--	--	--	--	--	--	--	--	--	--	--	--	--	--	--	--	--	--	--	--	--	--	--	--	--	--	--	--	--	--	--	--	--	--	--	--	--	--	--	--	--	--	--	--	--	--	--	--	--	--	--	--	--	--	--	--	--	--	--	--	--	--	--	--	--	--	--	--	--	--	--	--	--	--	--	--	--	--	--	--	--	--	--	--	--	--	--	--	--	--	--	--	--	--	--	--	--	--	--	--	--	--	--	--	--	--	--	--	--	--	--	--	--	--	--	--	--	--	--	--	--	--	--	--	--	--	--	--	--	--	--	--	--	--	--	--	--	--	--	--	--	--	--	--	--	--	--	--	--	--	--	--	--	--	--	--	--	--	--	--	--	--	--	--	--	--	--	--	--	--	--	--	--	--	--	--	--	--	--	--	--	--	--	--	--	--	--	--	--	--	--	--	--	--	--	--	--	--	--	--	--	--	--	--	--	--	--	--	--	--	--	--	--	--	--	--	--	--	--	--	--	--	--	--	--	--	--	--	--	--	--	--	--	--	--	--	--	--	--	--	--	--	--	--	--	--	--	--	--	--	--	--	--	--	--	--	--	--	--	--	--	--	--	--	--	--	--	--	--	--	--	--	--	--	--	--	--	--	--	--	--	--	--	--	--	--	--	--	--	--	--	--	--	--	--	--	--	--	--	--	--	--	--	--	--	--	--	--	--	--	--	--	--	--	--	--	--	--	--	--	--	--	--	--	--	--	--	--	--	--	--	--	--	--	--	--	--	--	--	--	--	--	--	--	--	--	--	--	--	--	--	--	--	--	--	--	--	--	--	--	--	--	--	--	--	--	--	--	--	--	--	--	--	--	--	--	--	--	--	--	--	--	--	--	--	--	--	--	--	--	--	--	--	--	--	--	--	--	--	--	--	--	--	--	--	--	--	--	--	--	--	--	--	--	--	--	--	--	--	--	--	--	--	--	--	--	--	--	--	--	--	--	--	--	--	--	--	--	--	--	--	--	--	--	--	--	--	--	--	--	--	--	--	--	--	--	--	--	--	--	--	--	--	--	--	--	--	--	--	--	--	--	--	--	--	--	--	--	--	--	--	--	--	--	--	--	--	--	--	--	--	--	--	--	--	--	--	--	--	--	--	--	--	--	--	--	--	--	--	--	--	--	--	--	--	--	--	--	--	--	--	--	--	--



4 NOT USED

1. ALL EXISTING EQUIPMENT MAY NOT BE SHOWN FOR CLARITY. CONTRACTOR SHALL FIELD VERIFY ALL POWER AND SIGNAL DEVICES AND ASSOCIATED CIRCUITRY AS REQUIRED. ALL RACEWAYS AND CONDUCTORS ASSOCIATED WITH EQUIPMENT TO BE DEMOLISHED SHALL BE DEMOLISHED BACK TO THEIR SOURCE, UNLESS OTHERWISE NOTED.
2. PROTECT ALL EXISTING WORK FROM DAMAGE DURING CONSTRUCTION. ANY DAMAGED MATERIALS, SYSTEMS, COMPONENTS, FINISHES BE LIKE, SHALL BE REPAIRED OR REPLACED AT THE EXPENSE OF THE CONTRACTOR TO THE ACCEPTANCE OF THE OWNER.
3. SEAL ALL INTERIOR WALL AND CEILING PENETRATIONS TO MATCH EXISTING FIRE RATING OR NEW FIRE RATING, IF REQUIRED. COORDINATE WITH ARCHITECTURAL DRAWINGS AS REQUIRED.
4. ALL TELECOMMUNICATIONS CABLING CATEGORY 6 AND BELOW SHALL BE UPGRADED WITH CAT6A PORTS AND CABLE QUANTITIES INDICATED, UNLESS NOTED OTHERWISE.
5. TELECOMMUNICATIONS CABLES SHALL BE ROUTED IN EXISTING PATHWAY VACATED BY EXISTING CABLING. PROVIDE RACEWAYS TO EXTEND TO ASSOCIATED TR.
6. A TELECOMMUNICATIONS OUTLET UPGRADE SHALL INCLUDE, BUT IS NOT LIMITED TO REMOVING AND DISPOSING EXISTING DEVICES AND CABLES; PROVIDING ALL LABOR, MATERIALS, TOOLS, TEST INSTRUMENTS, AND CONSUMABLES REQUIRED FOR THE INSTALLATION, TERMINATION, TESTING, LABELING, AND CERTIFICATION OF A FULLY FUNCTIONAL CATEGORY 6A OUTLET WITH THE PORT QUANTITY INDICATED.
7. CONTRACTOR SHALL PROVIDE, INSTALL, AND TERMINATE HORIZONTAL CAT 6A CABLING FROM EACH WAO (WORK AREA OUTLET) TO ITS RESPECTIVE TR.
8. PROVIDE PULL BOXES SIZED PER ANSI/TIA-568 AT 100-FT INTERVALS IN STRAIGHT CONDUIT RUNS, OR CONDUIT CONTAINING BENDS TOTALING MORE THAN 180 DEGREES.
9. PROVIDE CONDUITS AND SLEEVES AS REQUIRED FOR ROUTING AND INSTALLATION OF HORIZONTAL AND BACKBONE CABLING. PROVIDE FIRE-STOP MATERIALS TO SEAL IN AND AROUND CONDUIT PER CODE. REFER TO ARCHITECTURAL DRAWINGS FOR PARTITION TYPES AND WALL HEIGHTS.
10. OUTLET LOCATIONS ARE APPROXIMATE. DETERMINE EXACT LOCATIONS IN FIELD; DOCUMENT VARIANCES ON AS-BUILT DRAWINGS.
11. CONTRACTOR SHALL BE RESPONSIBLE FOR RELOCATING FURNITURE, INCLUDING TRANSPORTATION, FOR ALL WORK TO DESIRED VA STORAGE LOCATION. COORDINATE WITH VA AS REQUIRED.
12. ALL DATA CABLING SHALL BE SEGREGATED FROM OTHER SPECIAL SYSTEMS INCLUDING, BUT NOT LIMITED TO, SECURITY, FIRE ALARM, AND NURSE CALL SYSTEMS. WHEN ROUTED THROUGH CONDUIT, DATA CABLING SHALL HAVE ITS OWN RACEWAY. WHEN DATA CABLING IS ROUTED THROUGH A COMMON SPECIAL SYSTEMS CABLE TRAY, CABLING SHALL BE BUNDLED WITH LIKE SYSTEMS; ADDITIONALLY, CABLE TRAYS SHALL BE PROVIDED WITH TRAY DIVIDERS AS REQUIRED TO SEGREGATE SYSTEMS FROM ONE ANOTHER.
13. ALL TELECOMMUNICATION ROOMS SHALL BE PROVIDED WITH FIRE-RATED PLYWOOD BACKBOARDS. REFERENCE EXACT PLACEMENTS WITH ARCHITECTURE DRAWINGS AS REQUIRED.
14. FIBER-OPTIC CABLING ROUTES AND ASSOCIATED RACEWAYS/ CABLE TRAY ARE DIAGRAMMATICAL. COORDINATE EXACT ROUTING WITH EXISTING CONDITIONS, ARCHITECTURAL FEATURES, MECHANICAL DUCTWORK, PIPING, EQUIPMENT, AND ANY OTHER OBSTRUCTIONS PRIOR TO INSTALLATION.

1	EXISTING EQUIPMENT TO BE DEMOLISHED. ASSOCIATED RACEWAYS AND CABLING SHALL BE DEMOLISHED BACK TO SOURCE.
2	PROVIDE RIGID CONDUIT SLEEVES WITH FIRE PROOFING AS REQUIRED. SLEEVES SHALL BE HILTI QUIK RELEASE SLEEVES, OR REVIEWED EQUAL. REFERENCE DETAIL '2' ON SHEET ET503 FOR ADDITIONAL INFORMATION.

 - AREA OF WORK

VA FORM 08 - 6231									
1	2	3	4	5	6	7	8	9	10

1 EXISTING EQUIPMENT TO BE DEMOLISHED. ASSOCIATED RACEWAYS AND CABLING SHALL BE DEMOLISHED BACK TO SOURCE.

RM 149

PROJECT NORTH

■ - AREA OF WORK

2 RM 149 - TELECOMMUNICATIONS PLAN

58ET101 1/2" = 1'-0"

0' 1' 2' 4'

PROJECT NORTH

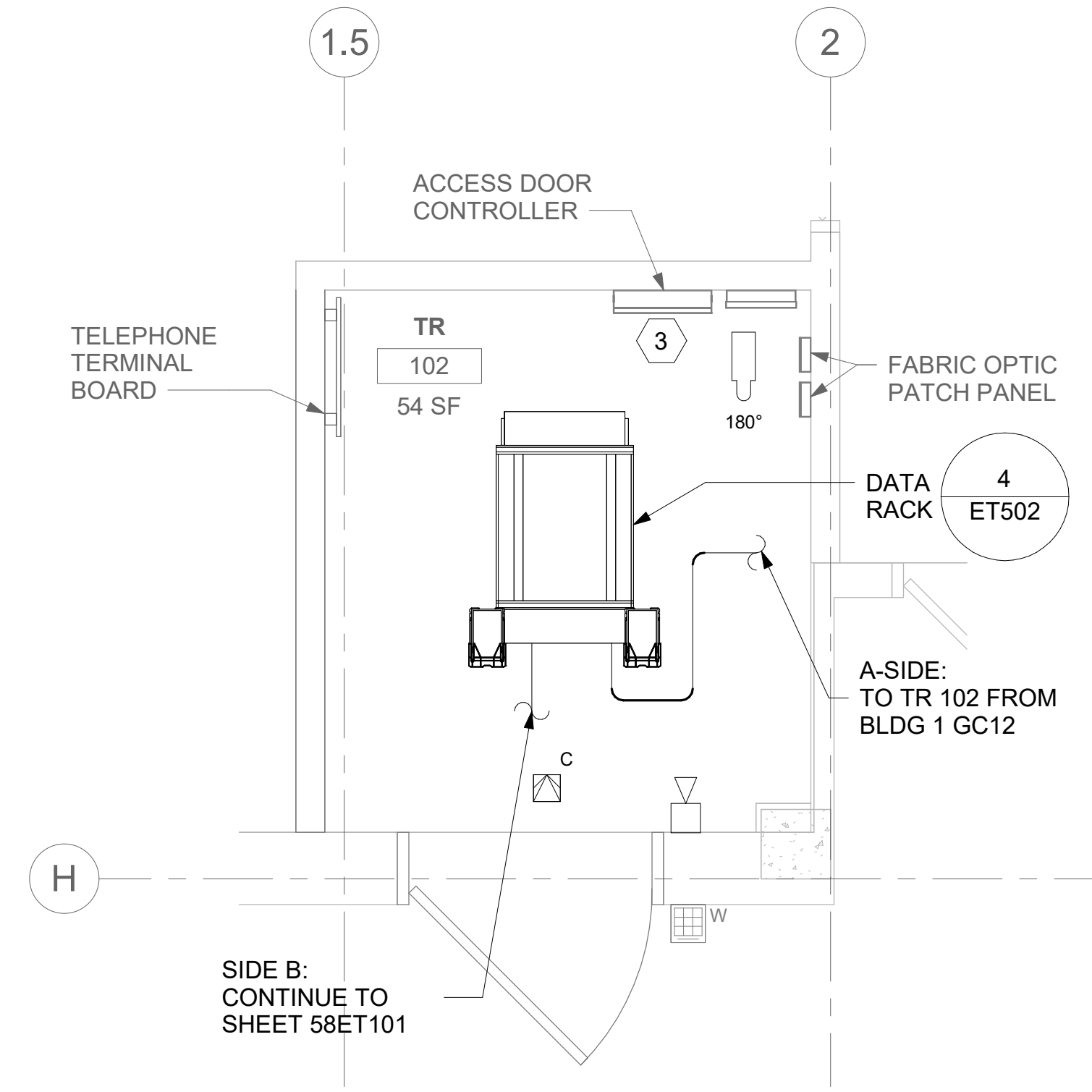
[illegible]

- 1 EXISTING EQUIPMENT TO BE DEMOLISHED ASSOCIATED RACEWAYS AND CABLING SHALL BE DEMOLISHED BACK TO SOURCE.
- 2 PROVIDE RIGID CONDUIT SLEEVES WITH FIRE PROOFING AS REQUIRED. SLEEVES SHALL BE ILTI KITE RELEASEE SLEEVES, OR REVIEWED EQUAL. REFERENCE DETAIL '2' ON SHEET ET503 FOR ADDITIONAL INFORMATION.
- 3 UTILIZE EXISTING PACS SECURITY HEAD END LOCATION FOR NEW OR RELOCATED PACS SECURITY TR EQUIPMENT. UPGRADE OR MODIFY EXISTING HEAD END LOCATION AS REQUIRED TO PROVIDE A COMPLETE AND FULLY FUNCTIONAL TR PACS SECURITY SYSTEM. PROVIDE EQUIPMENT, RACEWAYS, AND CABLING AS REQUIRED. COORDINATE WITH VA PRIOR TO CONSTRUCTION. CONTRACTOR SHALL VERIFY EXACT HEAD END LOCATION AS REQUIRED.

101A

102

PROJECT NORTH

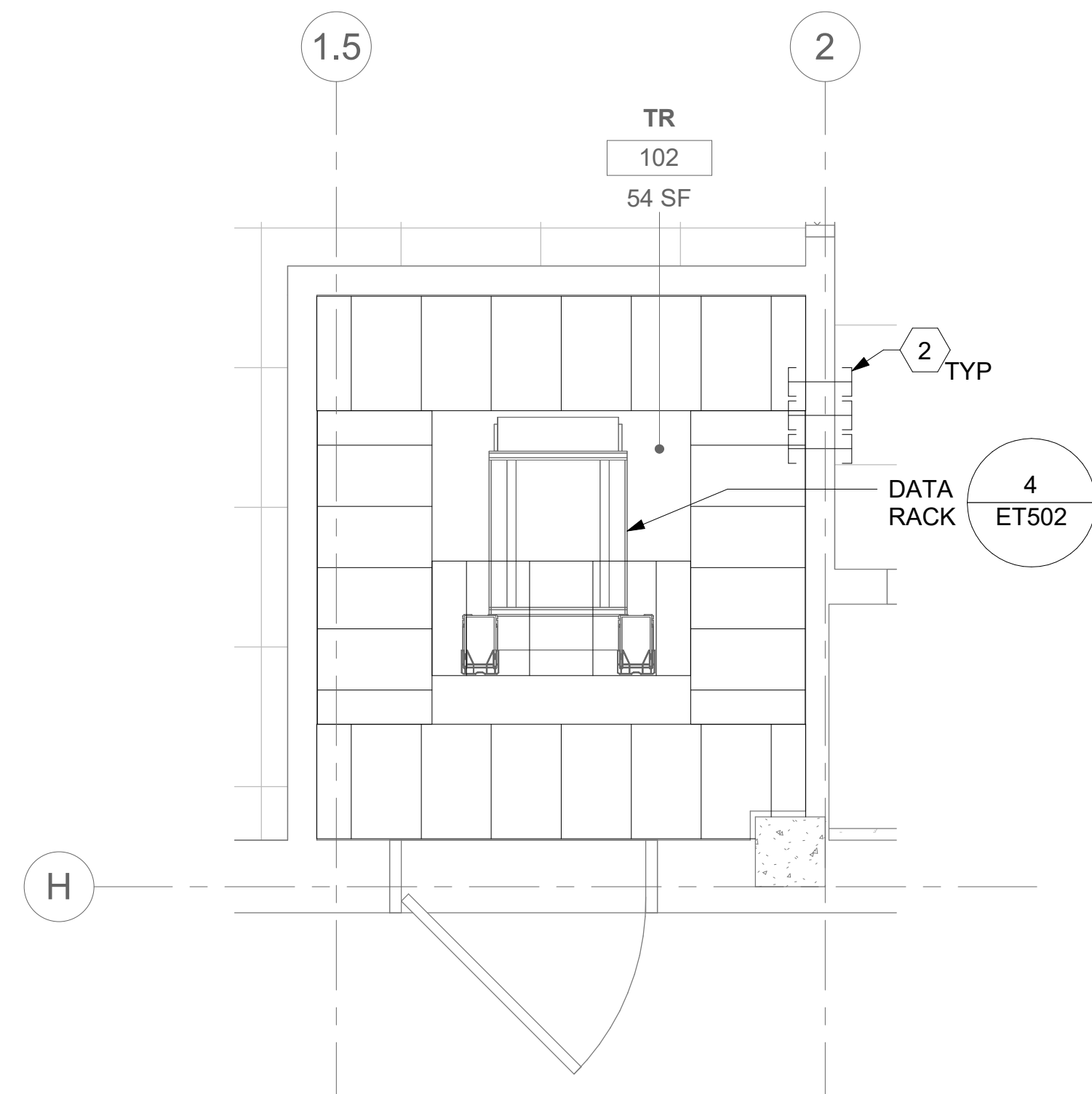


3 RM 102 - TELECOMMUNICATION PLAN

60ET101 1/2" = 1'-0"

0' 1' 2' 4'

PROJECT NORTH



4 RM 102 - OVERHEAD PLAN LEVEL 1
60ET101 1/2" = 1'-0" PROJECT NORTH

ALL BACKBONE CABLING ROUTES ARE DIAGRAMMATICAL; CONTRACTOR SHALL ENSURE A-SIDE AND B-SIDE ROUTING IS AS DIVERSE AS PRACTICAL. REFERENCE COMMUNICATIONS DRAWINGS FOR ALL REQUIRED FIBER-OPTIC CABLING.

5 NOT USED

[illegible]

- 1 PROVIDE TELECOMMUNICATIONS OUTLET WITH PORT QUANTITY SHOWN TO REPLACE EXISTING TELECOMMUNICATIONS OUTLET; EXISTING OUTLET CONDUIT SHALL REMAIN AND BE UTILIZED TO FEED NEW CABLEING; REFERENCE SHEET DETAIL "1" ON SHEET ET503 AND THE GENERAL NOTES ON THIS SHEET FOR ADDITIONAL INFORMATION. COORDINATE WITH VA FOR EXACT OUTLET PLACEMENT.
- 2 PROVIDE RIGID CONDUIT SLEEVES WITH FIRE PROOFING AS REQUIRED. SLEEVES SHALL BE HILTI QUICK RELEASE SLEEVES, OR REVIEWED EQUAL. REFERENCE DETAIL "2" ON SHEET ET503 FOR ADDITIONAL INFORMATION.
- 3 REPLACE EXISTING FIBER DISTRIBUTION CABINET WITH NEW FIBER DISTRIBUTION CABINET AND CASSETTES AS REQUIRED. LEVITON ANGLED OPT-X UHDX WITH HDX ENTERPRISES MTP CASSETTES, OR EQUAL.
- 4 UTILIZE EXISTING PACS SECURITY HEAD END LOCATION FOR NEW OR RELOCATED PACS SECURITY TR SYSTEM. UPGRADE OR REPLACE EXISTING HEAD END LOCATION AS REQUIRED TO PROVIDE A COMPLETE AND FULLY FUNCTIONAL TR PACS SECURITY SYSTEM. PROVIDE EQUIPMENT, RACEWAYS, AND CABLEING AS REQUIRED. COORDINATE WITH VA PRIOR TO CONSTRUCTION. CONTRACTOR SHALL VERIFY EXACT HEAD END LOCATION AS REQUIRED.

108

- AREA OF WORK

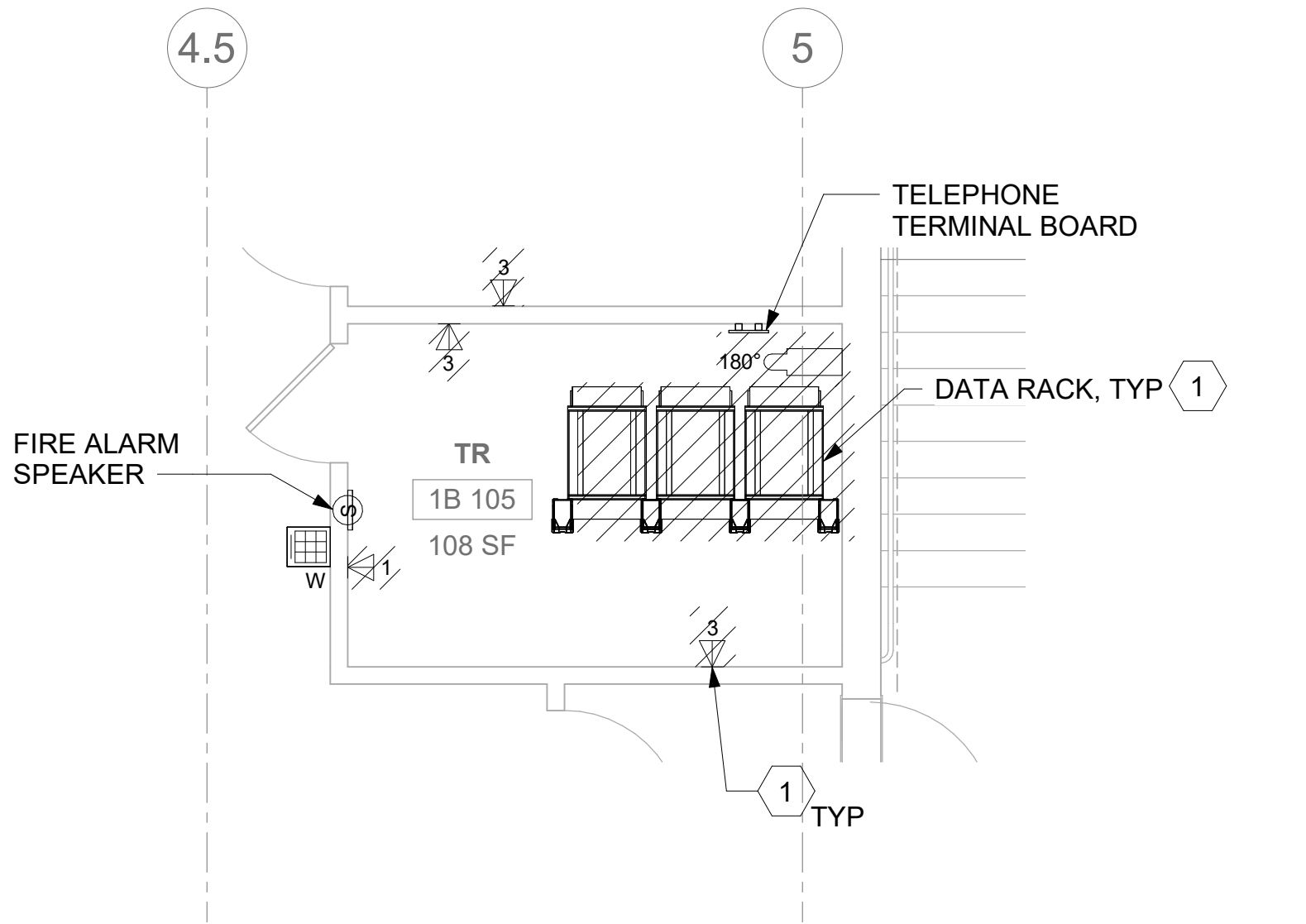
PROJECT NORTH



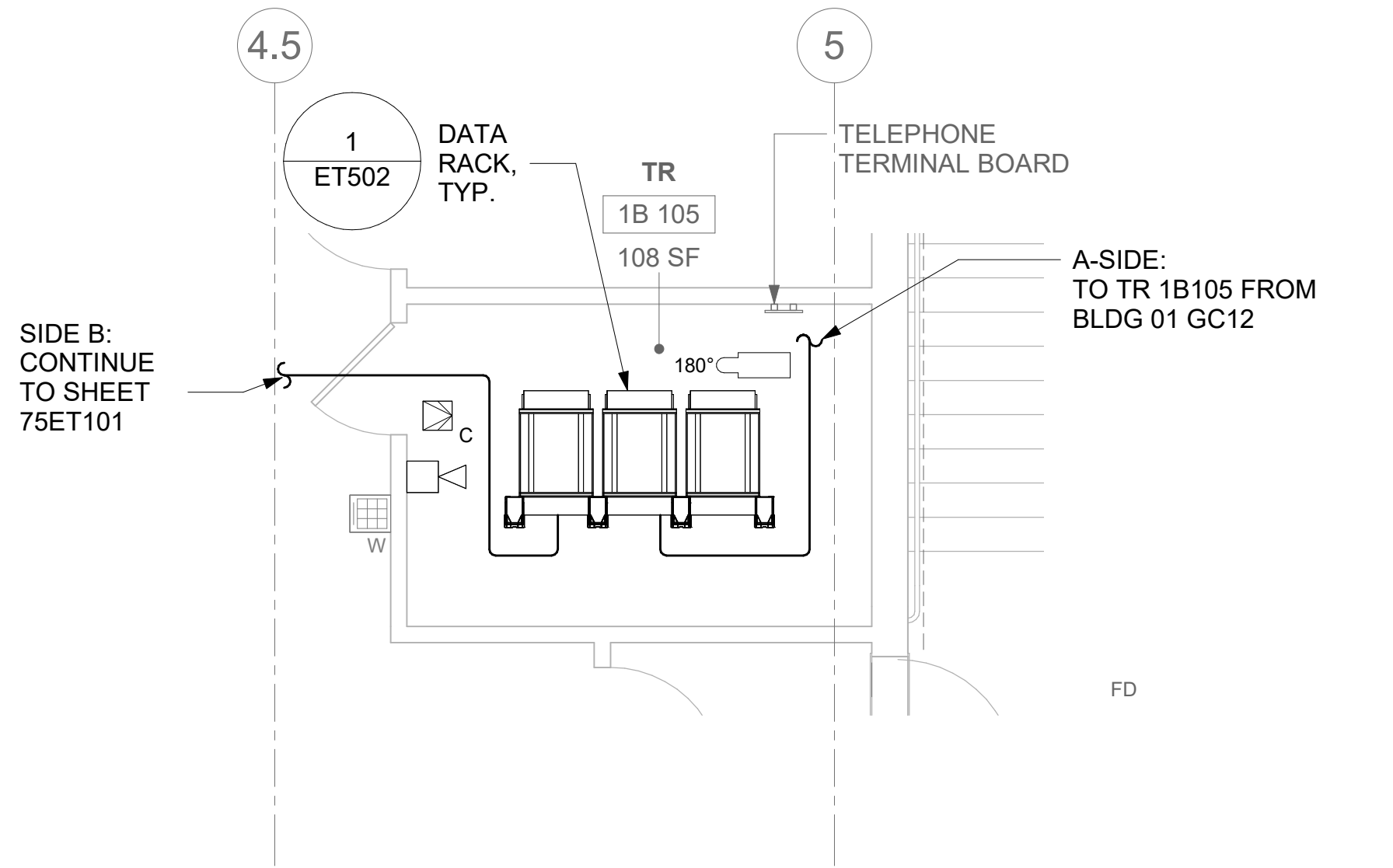
ALL BACKBONE CABLING ROUTES ARE DIAGRAMMATICAL; CONTRACTOR SHALL ENSURE A-SIDE AND B-SIDE ROUTING IS AS DIVERSE AS PRACTICAL. REFERENCE COMMUNICATIONS DRAWINGS FOR ALL REQUIRED FIBER-OPTIC CABLING.

4 NOT USED

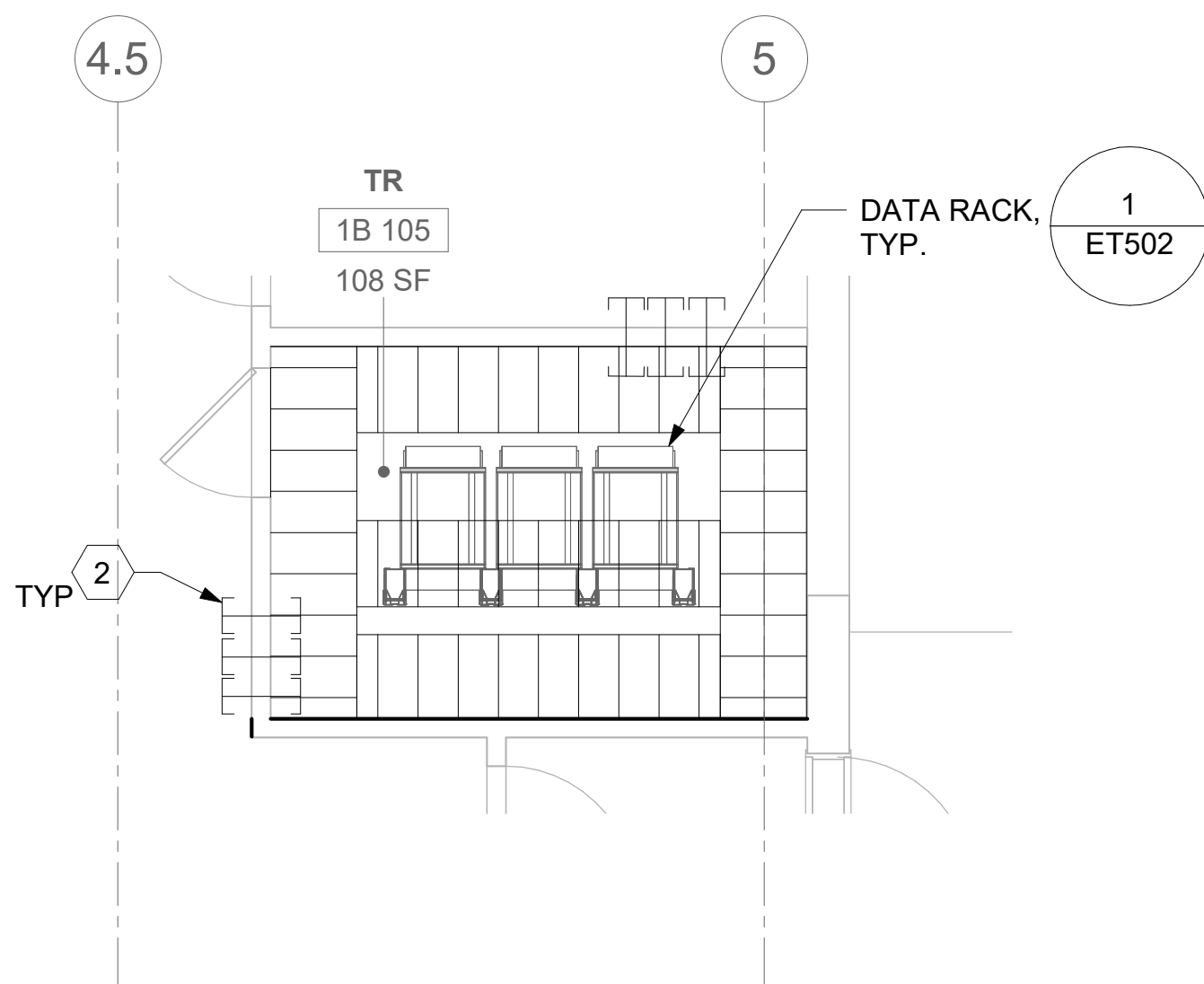
[illegible]



1 RM 1B105 - DEMOLITION FLOOR PLAN
75ET101 1/4" = 1'-0"



2 RM 1B105 - TELECOMMUNICATIONS PLAN
75ET101 1/4" = 1'-0"



3 RM 1B105 -OVERHEAD PLAN LEVEL 1
75ET101 1/4" = 1'-0"

4 NOT USED

ALL BACKBONE CABLING ROUTES ARE
DIAGRAMMATICAL; CONTRACTOR SHALL
ENSURE A-SIDE AND B-SIDE ROUTING IS
AS DIVERSE AS PRACTICAL. REFERENCE
COMMUNICATIONS DRAWINGS FOR ALL
REQUIRED FIBER-OPTIC CABLING.

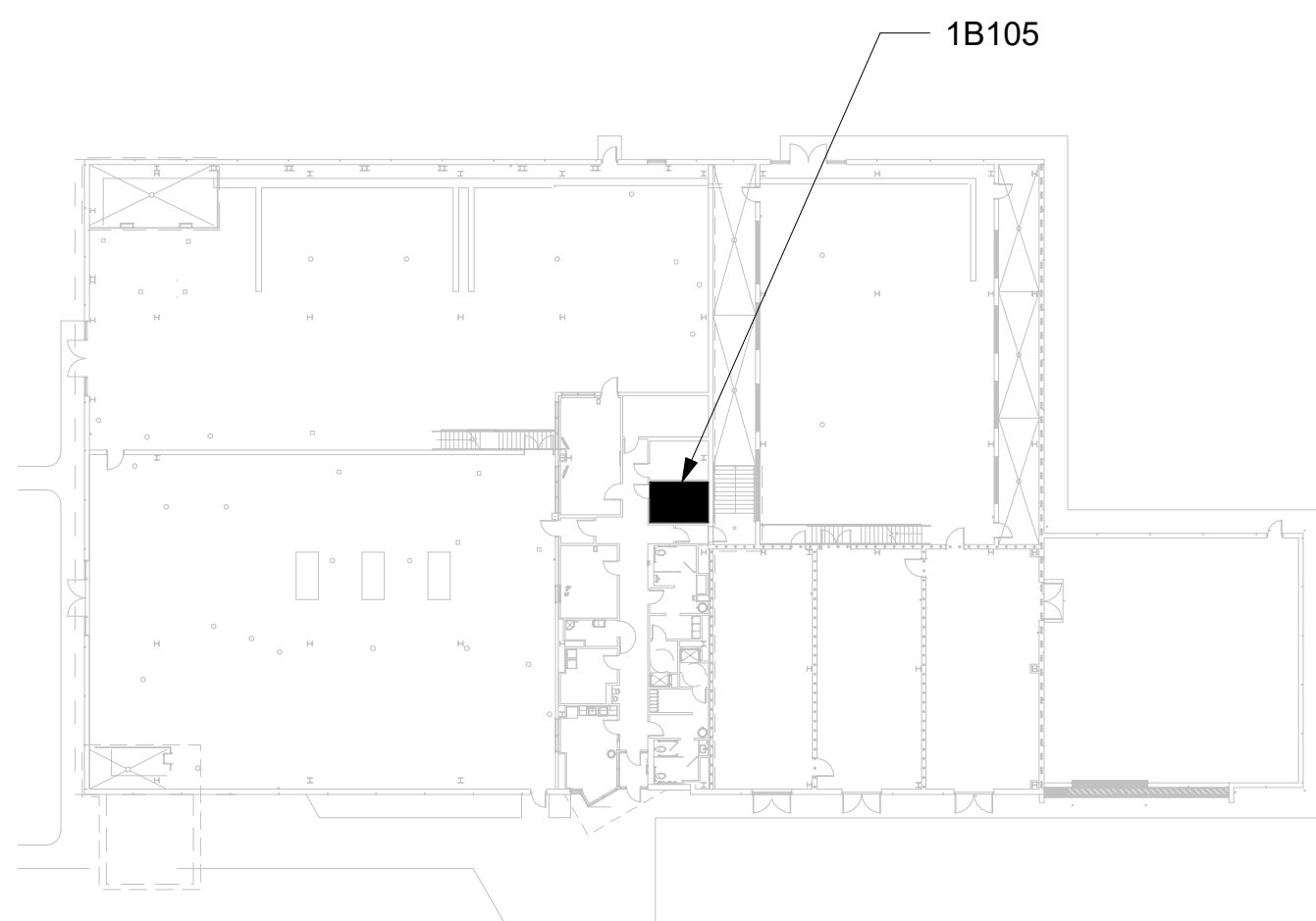
GENERAL NOTES

- ALL EXISTING EQUIPMENT MAY NOT BE SHOWN FOR CLARITY. CONTRACTOR SHALL FIELD VERIFY ALL POWER AND SIGNAL DEVICES AND ASSOCIATED CIRCUITRY AS REQUIRED. ALL RACEWAYS AND CONDUCTORS ASSOCIATED WITH EQUIPMENT TO BE DEMOLISHED SHALL BE DEMOLISHED BACK TO THEIR SOURCE, UNLESS OTHERWISE NOTED.
- PROTECT ALL EXISTING WORK FROM DAMAGE DURING CONSTRUCTION. ANY DAMAGED MATERIALS, SYSTEMS, COMPONENTS, FINISHES BE LIKE, SHALL BE REPAIRED OR REPLACED AT THE EXPENSE OF THE CONTRACTOR TO THE ACCEPTANCE OF THE OWNER.
- SEAL ALL INTERIOR WALL AND CEILING PENETRATIONS TO MATCH EXISTING FIRE RATING OR NEW FIRE RATING, IF REQUIRED. COORDINATE WITH ARCHITECTURAL DRAWINGS AS REQUIRED.
- ALL TELECOMMUNICATIONS CABLING CATEGORY 5E AND BELOW SHALL BE UPGRADED WITH CAT6A PORTS AND CABLE QUANTITIES INDICATED, UNLESS NOTED OTHERWISE.
- TELECOMMUNICATIONS CABLES SHALL BE ROUTED IN EXISTING PATHWAY VACATED BY EXISTING CABLING AS CONDUIT FILL ALLOWS. PROVIDE ADDITIONAL RACEWAYS TO EXTEND TO ASSOCIATED TR AS REQUIRED.
- A TELECOMMUNICATIONS OUTLET UPGRADE SHALL INCLUDE, BUT IS NOT LIMITED TO REMOVING AND DISPOSING EXISTING DEVICES AND CABLES; PROVIDING ALL LABOR, MATERIALS, TOOLS, TEST INSTRUMENTS, AND CONSUMABLES REQUIRED FOR THE INSTALLATION, TERMINATION, TESTING, LABELING, AND CERTIFICATION OF A FULLY FUNCTIONAL CATEGORY 6A OUTLET WITH THE PORT QUANTITY INDICATED.
- PROVIDE 1" CONDUIT FROM NEW BACKBOX TO ACCESSIBLE CEILING SPACE FOR ALL OUTLETS IDENTIFIED AS NEW.
- PROVIDE PULL BOXES SIZED PER ANSI/TIA-569 AT 100-FT INTERVALS IN STRAIGHT CONDUIT RUNS, OR CONDUIT CONTAINING BENDS TOTALING MORE THAN 180 DEGREES.
- PROVIDE CONDUITS AND SLEEVES AS REQUIRED FOR ROUTING AND INSTALLATION OF HORIZONTAL AND BACKBONE CABLING. PROVIDE FIRE-STOP MATERIALS TO SEAL IN AND AROUND CONDUIT PER CODE. REFER TO ARCHITECTURAL DRAWINGS FOR PARTITION TYPES AND WALL HEIGHTS.
- OUTLET LOCATIONS ARE APPROXIMATE. DETERMINE EXACT LOCATIONS IF FIELD; DOCUMENT VARIANCES ON AS-BUILT DRAWINGS.
- CONTRACTOR SHALL BE RESPONSIBLE FOR RELOCATING FURNITURE, INCLUDING TRANSPORTATION, FOR ALL WORK TO DESIRED VA STORAGE LOCATION. COORDINATE WITH VA AS REQUIRED.
- ALL DATA CABLING SHALL BE SEGREGATED FROM OTHER SPECIAL SYSTEMS INCLUDING, BUT NOT LIMITED TO, SECURITY, FIRE ALARM, AND NURSE CALL SYSTEMS. WHEN ROUTED THROUGH CONDUIT, DATA CABLING SHALL HAVE ITS OWN RACEWAY. WHEN DATA CABLING IS ROUTED THROUGH A COMMON SPECIAL SYSTEMS CABLE TRAY, CABLING SHALL BE BUNDLED WITH LIKE SYSTEMS; ADDITIONALLY, CABLE TRAYS SHALL BE PROVIDED WITH TRAY DIVIDERS AS REQUIRED TO SEGREGATE SYSTEMS FROM ONE ANOTHER.
- ALL TELECOMMUNICATION ROOMS SHALL BE PROVIDED WITH FIRE-RATED PLYWOOD BACKBOARDS. REFERENCE EXACT PLACEMENTS WITH ARCHITECTURE DRAWINGS AS REQUIRED.
- FIBER-OPTIC CABLING ROUTES AND ASSOCIATED RACEWAYS/CABLE TRAY ARE DIAGRAMMATICAL. COORDINATE EXACT ROUTING WITH EXISTING CONDITIONS, ARCHITECTURAL FEATURES, MECHANICAL DUCTWORK, PIPING, EQUIPMENT, AND ANY OTHER OBSTRUCTIONS PRIOR TO INSTALLATION.

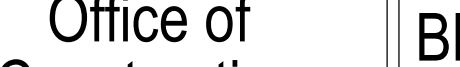

KEY NOTES

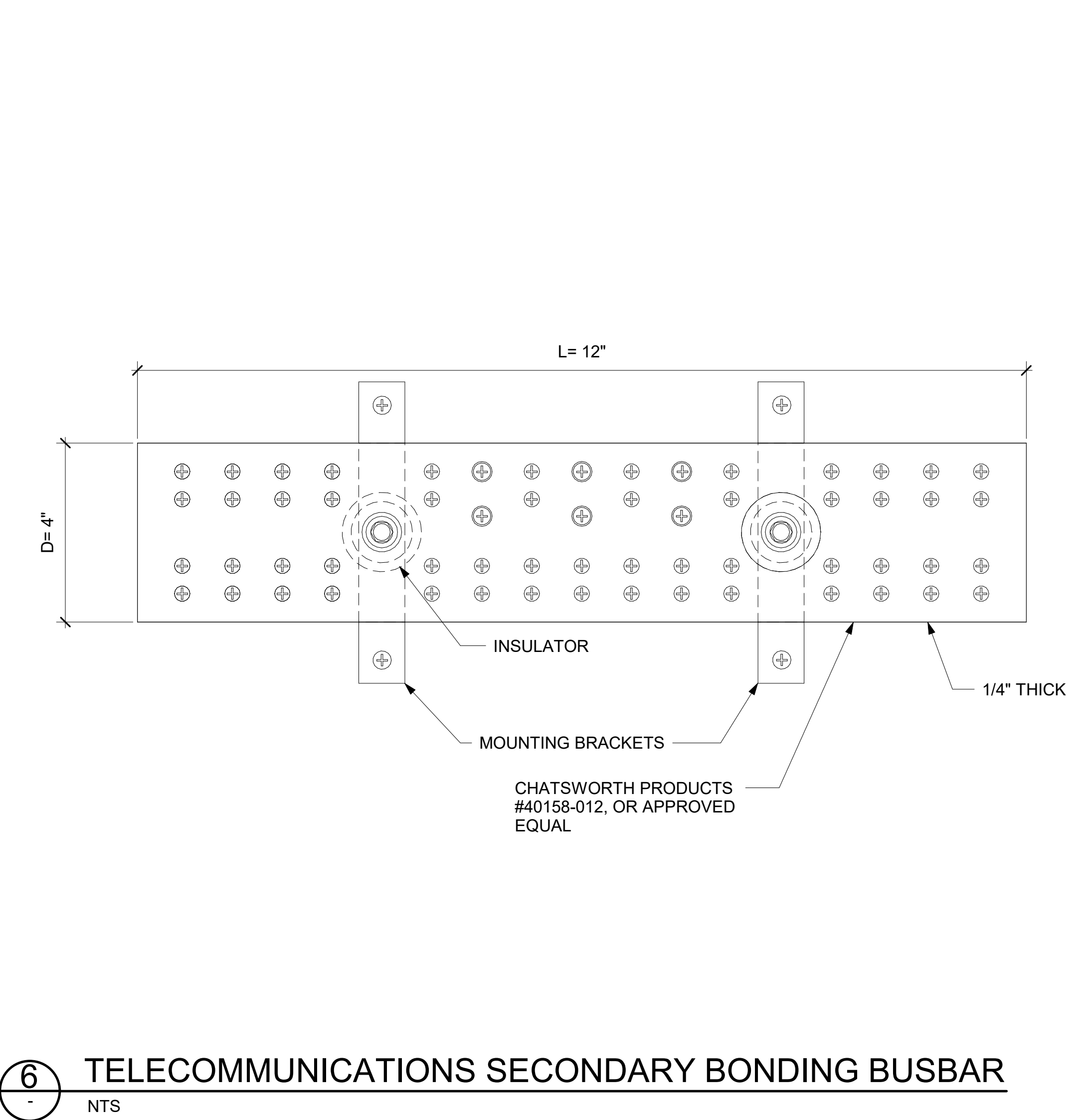
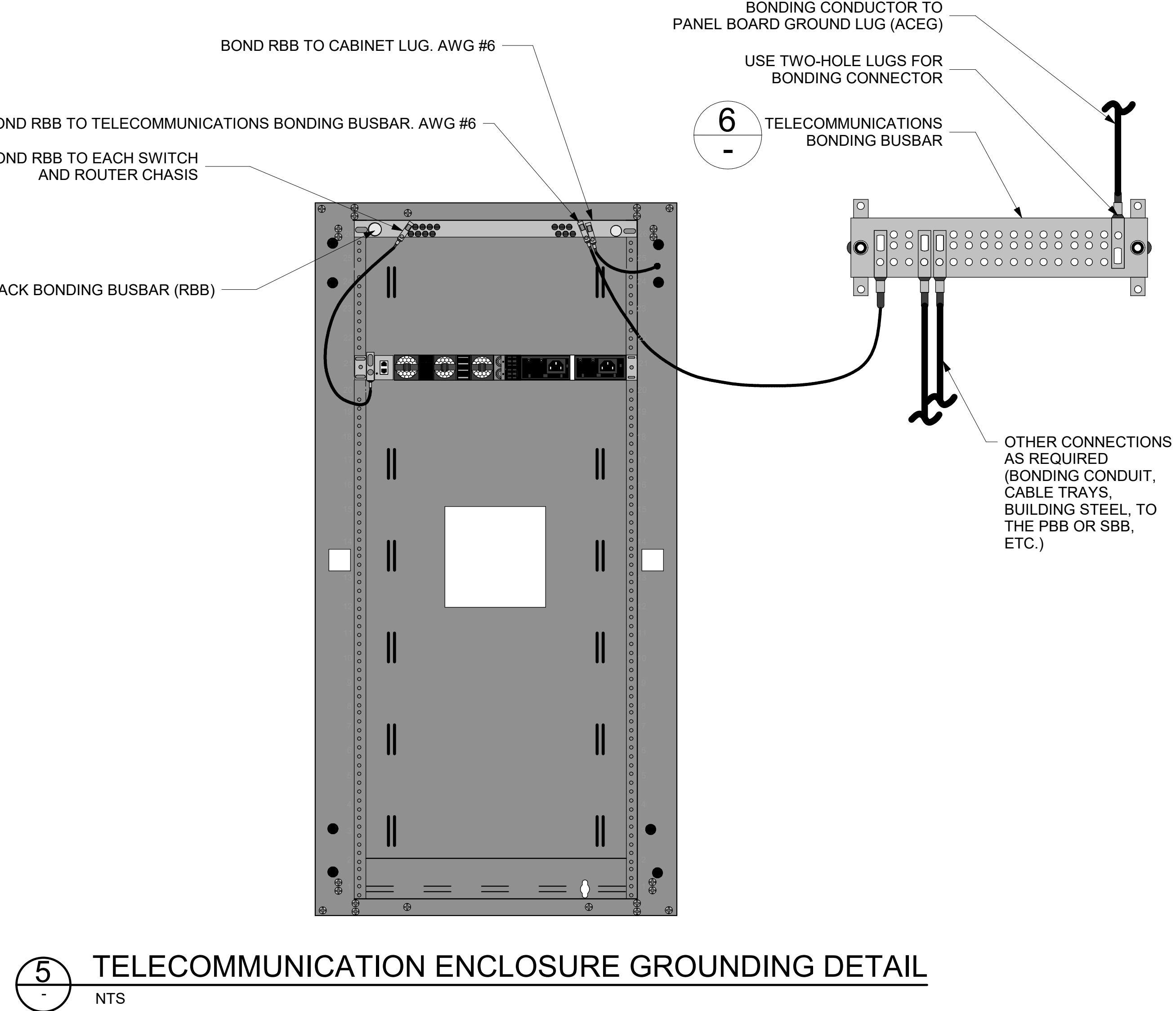
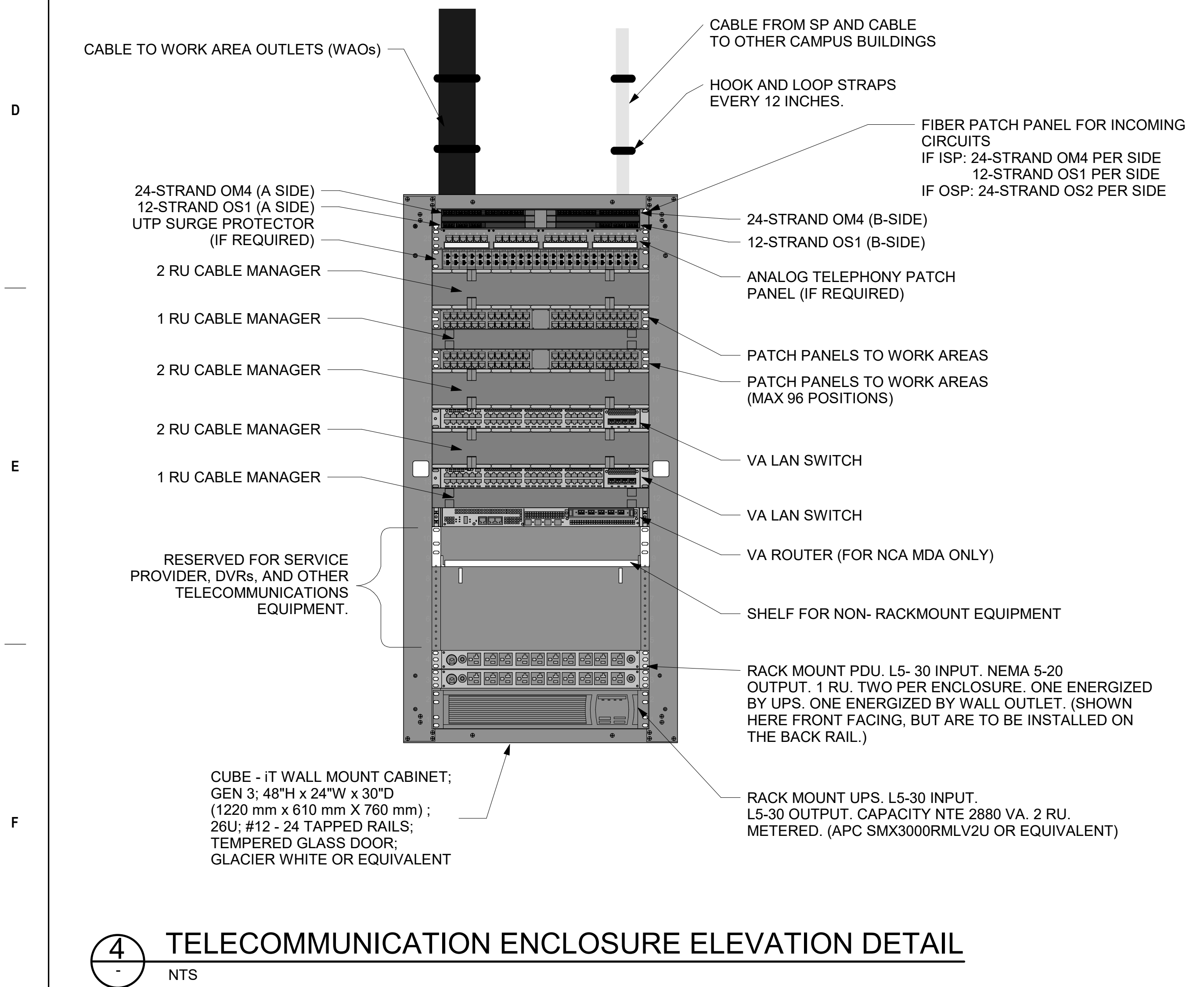
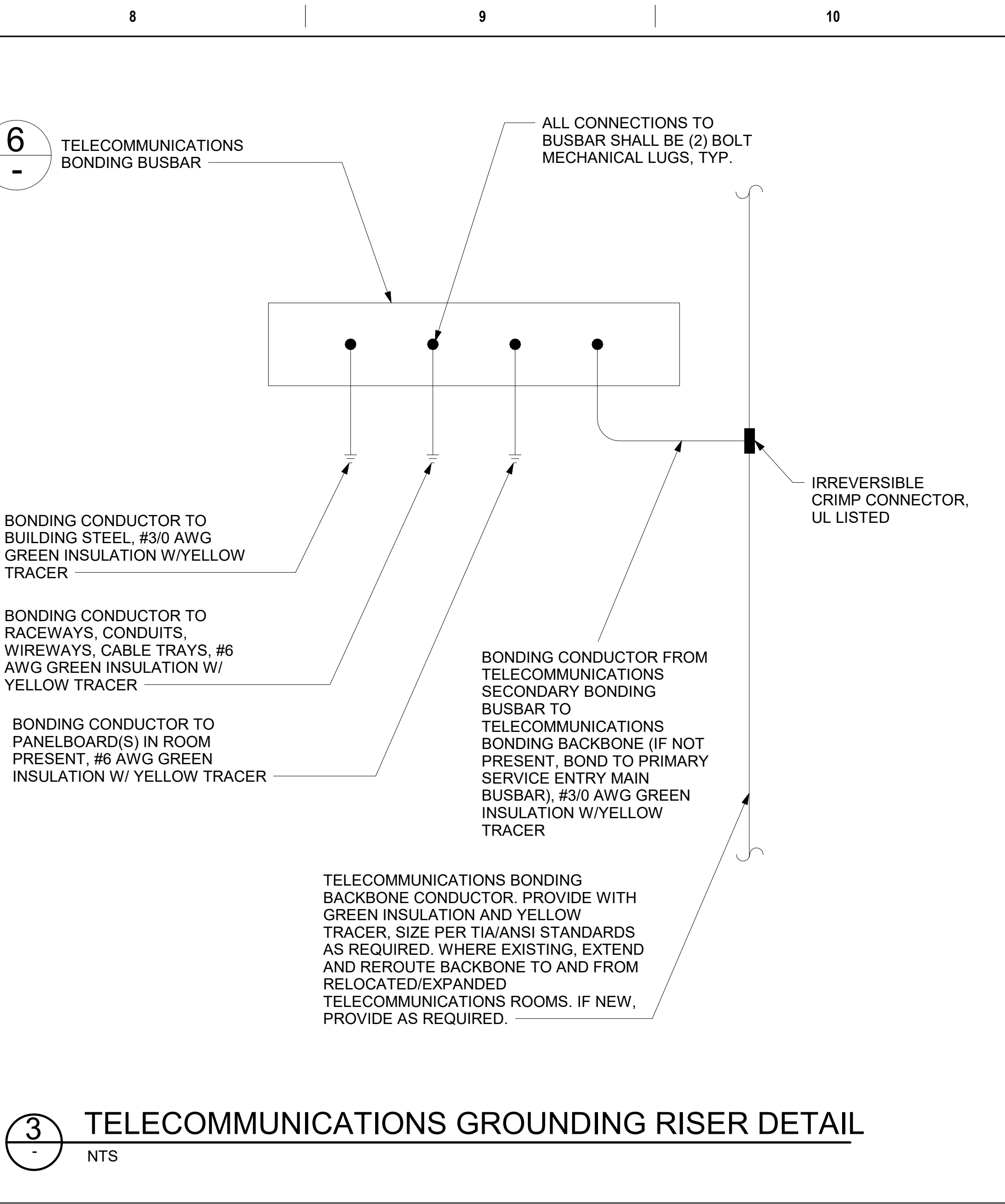
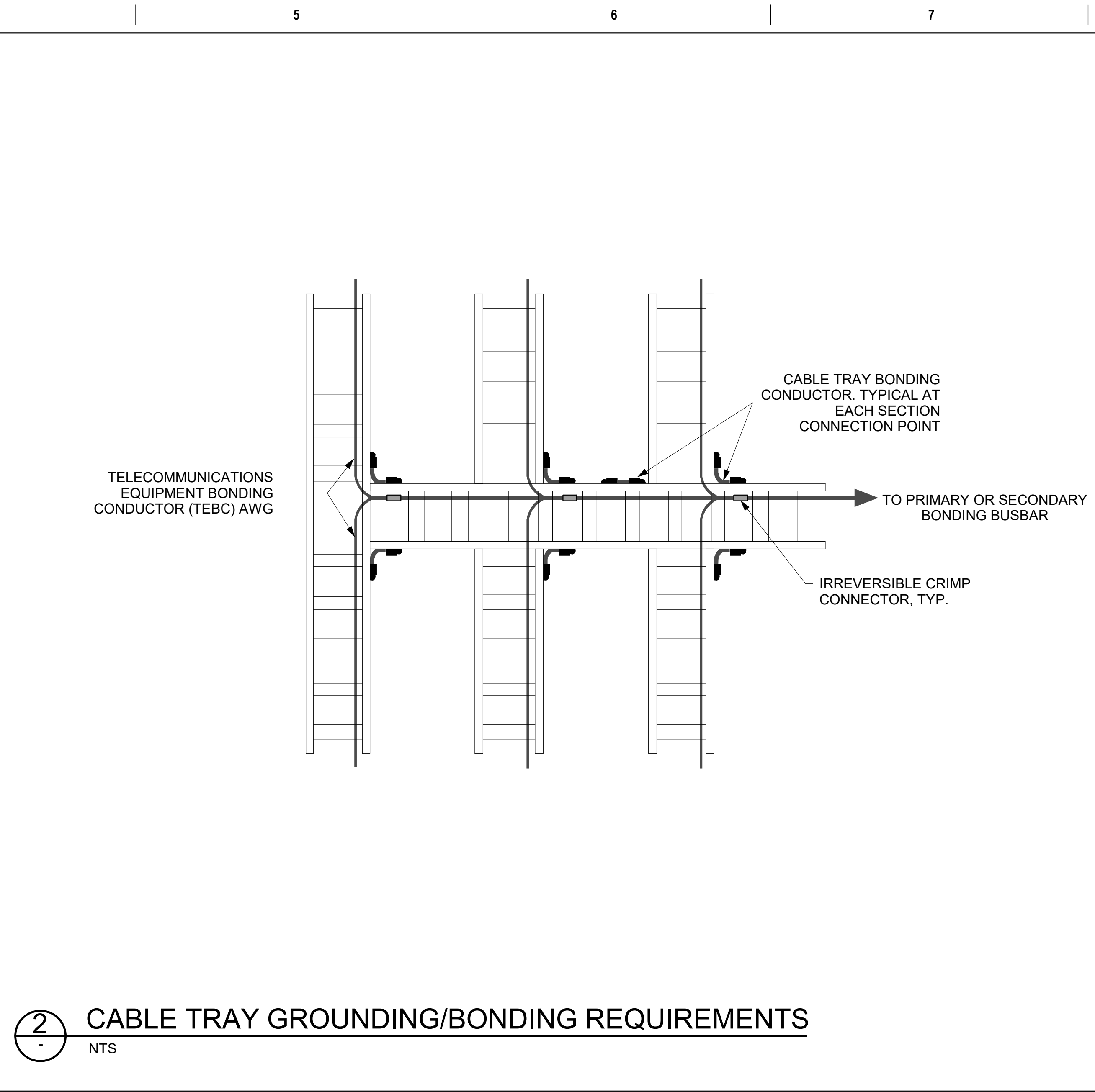
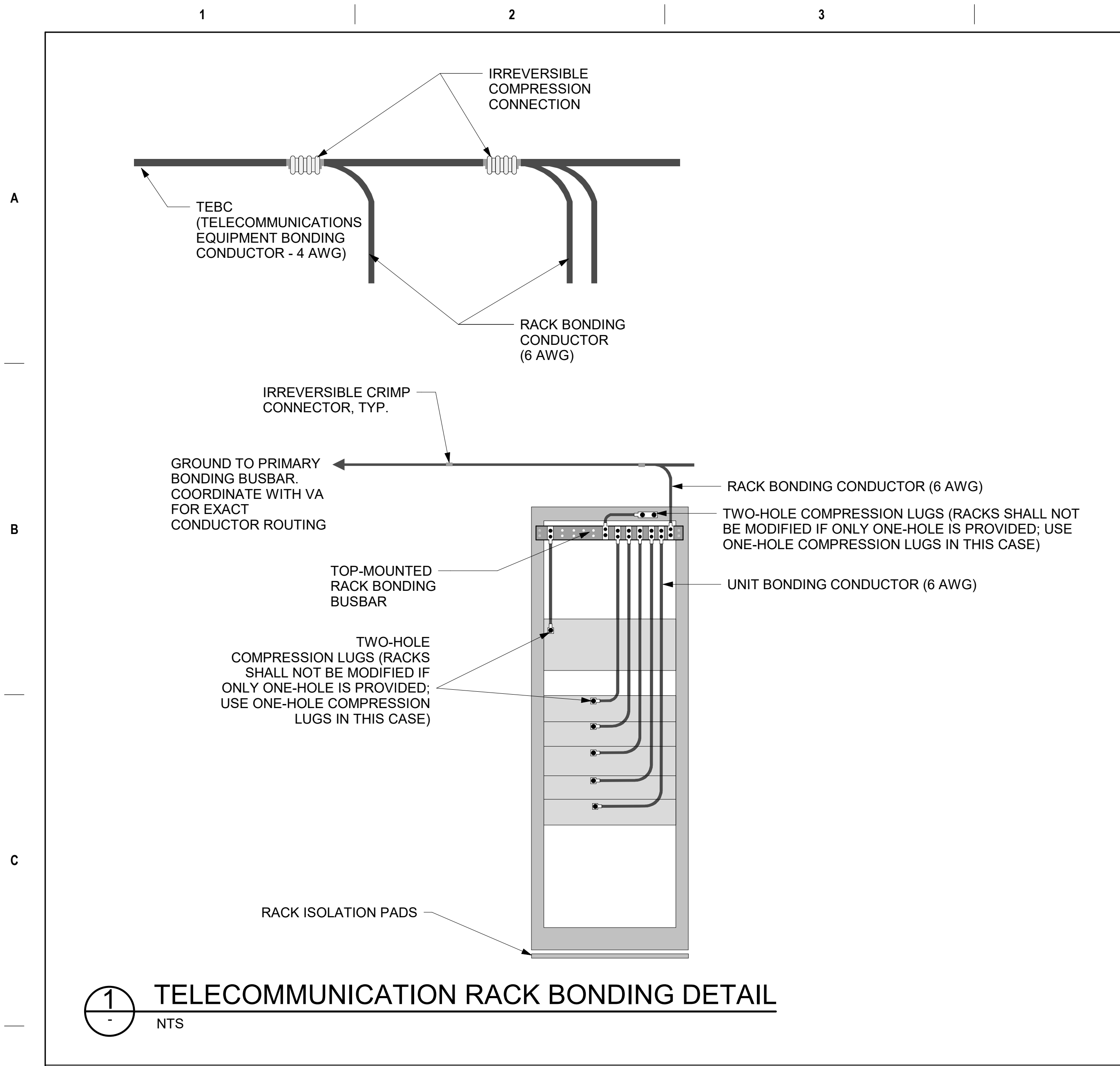
- EXISTING EQUIPMENT TO BE DEMOLISHED. ASSOCIATED RACEWAYS AND CABLING SHALL BE DEMOLISHED BACK TO SOURCE.
- PROVIDE RIGID CONDUIT SLEEVES WITH FIRE PROOFING AS REQUIRED. SLEEVES SHALL BE HILTI QUICK RELEASE SLEEVES, OR REVIEWED EQUAL. REFERENCE DETAIL '2' ON SHEET ET503 FOR ADDITIONAL INFORMATION.

KEY PLAN



- AREA OF WORK

		CONSULTANT		ARCHITECT/ENGINEER OF RECORD		STAMP		Drawing Title		Phase		Project Title		Project Number	
				A/E: SPEES DESIGN BUILD 625 1ST AVE, STE 301 SEATTLE, WA 98104 (206) 590-2118 RAY SPEES				BLDG 75 - FLOOR 1 - ENLARGED TELECOMMUNICATIONS PLANS		CONSTRUCTION DOCUMENTS		EHRM INFRASTRUCTURE UPGRADES		657-21-701JB	
								Approved:				Location ST. LOUIS VA MEDICAL CENTER - JEFFERSON BARRACKS, MO		Building Number 75	
										FULLY SPRINKLERED		Issue Date 03/31/2022		Checked LRL/WM	Drawn JGE/JBB
Revisions:		Date:												Drawing Number 75ET401 428 OF 435	



Revisions:		Date:	CONSULTANT	ARCHITECT/ENGINEER OF RECORD	STAMP	Office of Construction and Facilities Management	Drawing Title	Phase	Project Title	Project Number
				A/E: SPEEDS DESIGN BUILD 625 1ST AVE, STE 301 SEATTLE, WA 98104 (206) 590-2118 RAY SPEEDS	LOUIS R. LITZKO STATE OF WASHINGTON 55081 REGISTERED PROFESSIONAL ENGINEER	VA U.S. Department of Veterans Affairs	TELECOMMUNICATIONS DETAILS	CONSTRUCTION DOCUMENTS	EHRM INFRASTRUCTURE UPGRADES	657-21-701JB
							Approved:	FULLY SPRINKLERED	Location	Drawing Number
									ST. LOUIS VA MEDICAL CENTER - JEFFERSON BARRACKS, MO	ET501
									Issue Date	429 OF 435
									03/31/2022	
									Checked	
									LRL/WM	
									Drawn	
									JBB	