





8 7 6 5 4 3 2 1

H

G

F

E

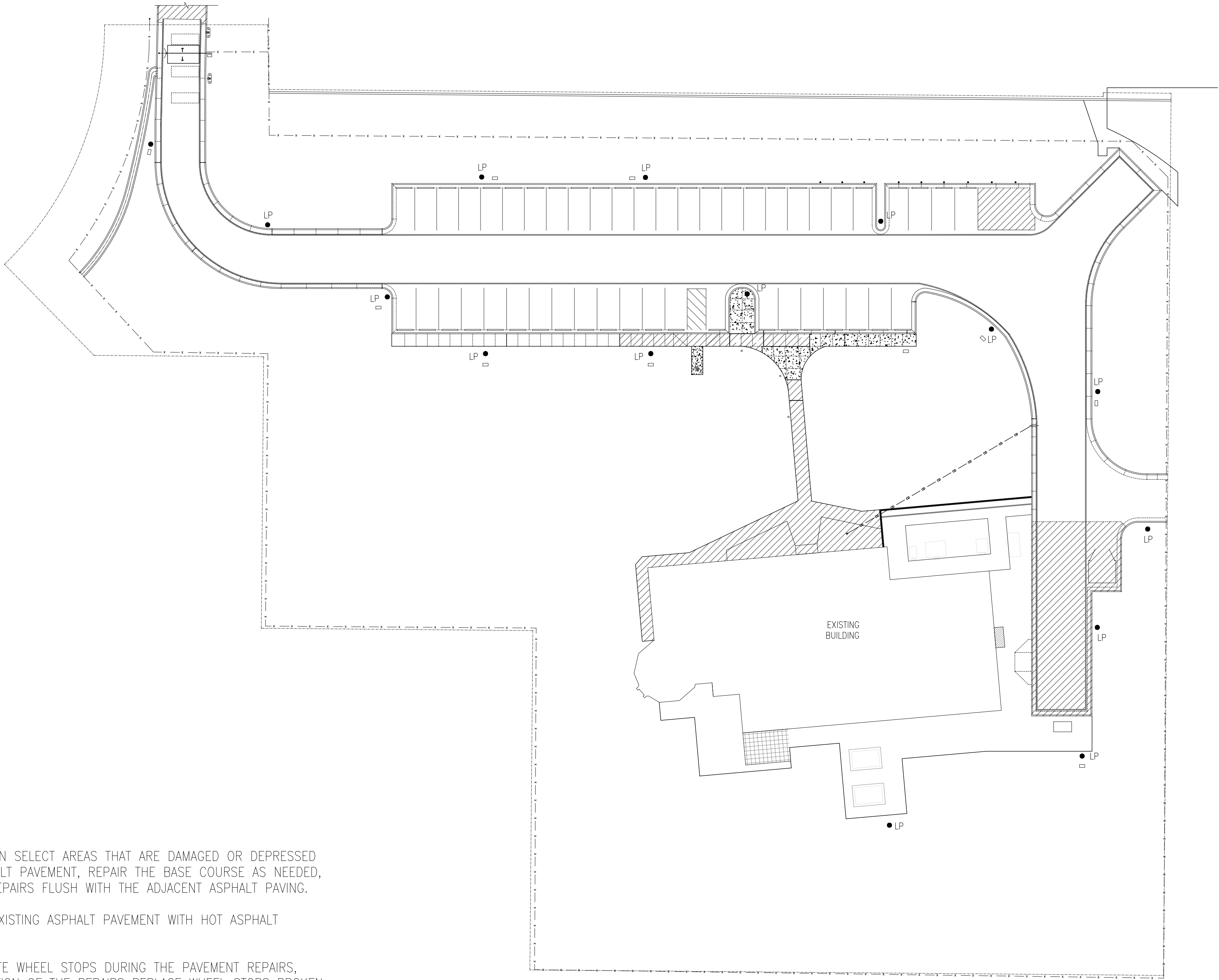
D

C

B

A

SPLEES  
STAMES  
STAMES  
STAMES



1 EXISTING SITE PLAN: ABILENE AIR TRAFFIC CONTROL TOWER  
SCALE: 1"=15'-0"(11"x17"); 1"=30'-0"(22"x34")

SCOPE OF WORK:

1. REMOVE EXISTING ASPHALT PAVING IN SELECT AREAS THAT ARE DAMAGED OR DEPRESSED TO THE FULL DEPTH OF THE ASPHALT PAVEMENT, REPAIR THE BASE COURSE AS NEEDED, AND PERFORM HOT ASPHALT MIX REPAIRS FLUSH WITH THE ADJACENT ASPHALT PAVING.
2. CLEAN AND SEAL CRACKS IN THE EXISTING ASPHALT PAVEMENT WITH HOT ASPHALT SEALANT.
3. REMOVE EXISTING PRECAST CONCRETE WHEEL STOPS DURING THE PAVEMENT REPAIRS, AND REINSTALL AFTER THE COMPLETION OF THE REPAIRS REPLACE WHEEL STOPS BROKEN OR DAMAGED DURING REMOVAL AND REINSTALLATION.
4. APPLY AN ASPHALT EMULSION SEAL COAT TO THE EXISTING ASPHALT PAVING.
5. APPLY NEW PAVEMENT STRIPING, MARKINGS, AND SYMBOLS.
6. DEMOLISH AND REPLACE DETERIORATED CONCRETE SIDEWALKS.
7. REMOVE EXISTING SEALANT, AND RESEAL JOINTS BETWEEN NEW CONCRETE SIDEWALKS AND EXISTING CONCRETE SIDEWALKS, CONTROL JOINTS IN THE EXISTING SIDEWALKS, AND JOINTS BETWEEN CURBS AND NEW AND EXISTING SIDEWALKS.
8. FURNISH AND INSTALL A BLUE-COLORED REFLECTORIZED PAVEMENT MARKER TO DELINEATE EXISTING FIRE HYDRANT.
9. REMOVE AND REPLACE PARKING SIGNS.
10. PERFORM CEMENTITIOUS MORTAR REPAIRS IN DRAIN TROUGH INLET.
11. PROVIDE SPECIFIED MANUFACTURER AND CONTRACTOR WARRANTIES.

GENERAL NOTES:

- A. ALL DIMENSIONS, EQUIPMENT, UTILITY PIPING/CABLING, AND PENETRATION SIZE, QUANTITY, & LOCATIONS PRESENTED ON THE DRAWINGS SHALL BE FIELD VERIFIED.
- B. THESE DRAWINGS AND DETAILS ACCOMPANY SPECIFICATIONS AND DOCUMENTS THAT COMPRISE A PROJECT MANUAL.
- C. DETAILS ARE DESIGNATED AT REPRESENTATIVE LOCATIONS. EACH LOCATION AND SIMILAR CONDITIONS ARE TO BE TREATED ACCORDINGLY.
- D. UNLESS INDICATED BY THE TERM "EXISTING", ITEMS PRESENTED ON DETAIL DRAWINGS ARE CONSIDERED TO BE NEW AND FURNISHED BY CONTRACTOR.

TYPICAL DETAIL DESIGNATION: 1 RP1 ——— DETAIL NUMBER ——— SHEET NUMBER

PRICE CONSULTING, INC.  
211 HIGHLAND CROSS, SUITE 220  
HOUSTON, TEXAS 77053  
PHONE: (281)208-1724  
FAX: (281)208-2724  
P.O. PROJECT NO.: 12082.22.01  
TX P.E. FIRM # F-3814

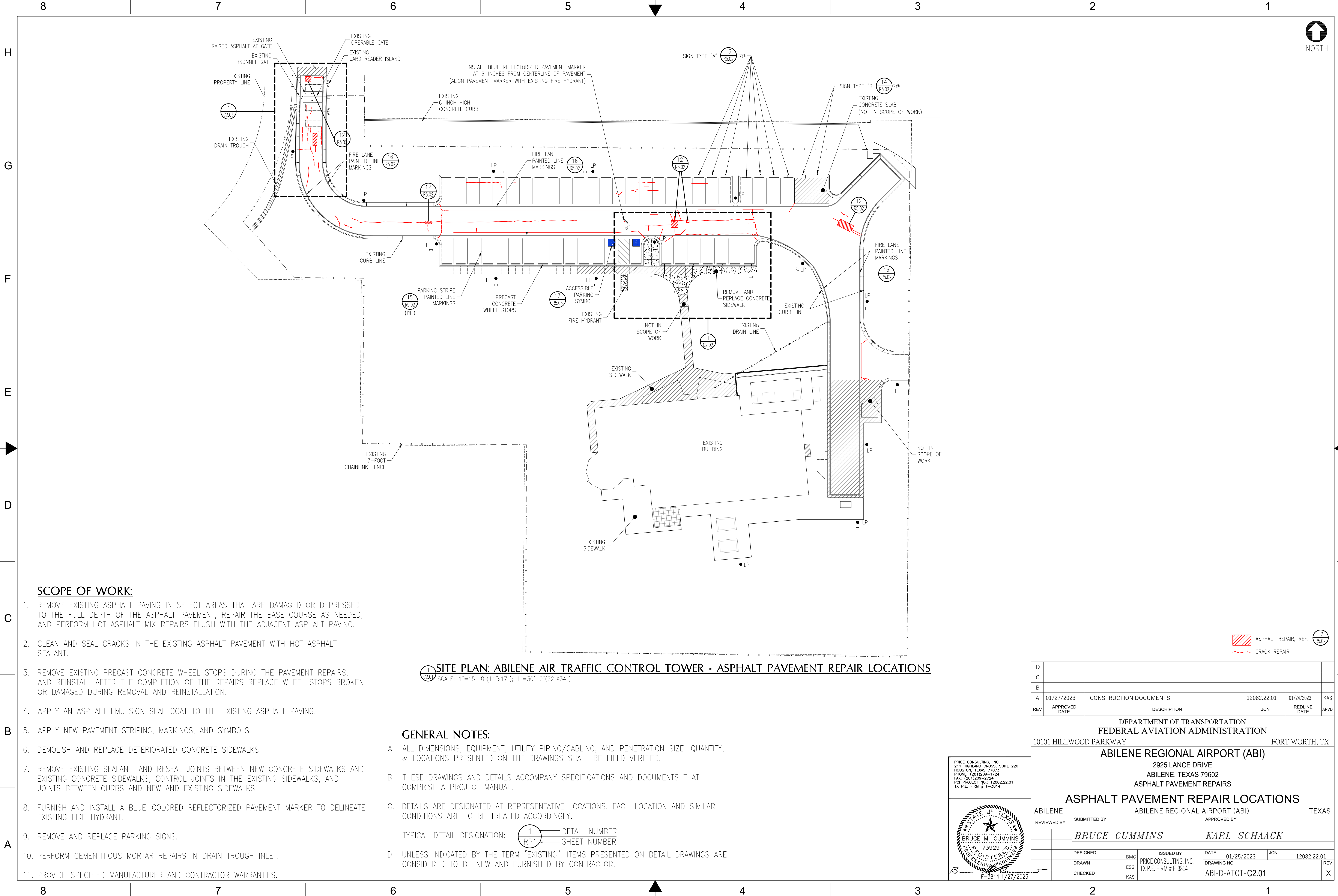
STATE OF TEXAS  
REGISTERED PROFESSIONAL ENGINEER  
BRUCE M. CUMMINS  
73929  
F-3814 1/27/2023

D					
C					
B					
A	01/27/2023	CONSTRUCTION DOCUMENTS	12082.22.01	01/24/2023	KAS
REV	APPROVED DATE	DESCRIPTION	JCN	REDLINE DATE	APVD
DEPARTMENT OF TRANSPORTATION FEDERAL AVIATION ADMINISTRATION 10101 HILLWOOD PARKWAY FORT WORTH, TX ABILENE REGIONAL AIRPORT (ABI) 2925 LANCE DRIVE ABILENE, TEXAS 79602 ASPHALT PAVEMENT REPAIRS SITE PLAN ABILENE ABILENE REGIONAL AIRPORT (ABI) TEXAS					
REVIEWED BY	SUBMITTED BY <b>BRUCE CUMMINS</b>		APPROVED BY <b>KARL SCHAACK</b>		
	DESIGNED	BMC	ISSUED BY	DATE	JCN
	DRAWN	ESG	PRICE CONSULTING, INC. TX P.E. FIRM # F-3814	01/25/2023	12082.22.01
	CHECKED	KAS	DRAWING NO.	ABI-D-ATCT-C1.01	
				REV	X



NORTH

ISSUED FOR: CONSTRUCTION DOCUMENTS  
EDW: TB 22.034.FAA



SCOPE OF WORK:

1. REMOVE EXISTING ASPHALT PAVING IN SELECT AREAS THAT ARE DAMAGED OR DEPRESSED TO THE FULL DEPTH OF THE ASPHALT PAVEMENT, REPAIR THE BASE COURSE AS NEEDED, AND PERFORM HOT ASPHALT MIX REPAIRS FLUSH WITH THE ADJACENT ASPHALT PAVING.
2. CLEAN AND SEAL CRACKS IN THE EXISTING ASPHALT PAVEMENT WITH HOT ASPHALT SEALANT.
3. REMOVE EXISTING PRECAST CONCRETE WHEEL STOPS DURING THE PAVEMENT REPAIRS, AND REINSTALL AFTER THE COMPLETION OF THE REPAIRS REPLACE WHEEL STOPS BROKEN OR DAMAGED DURING REMOVAL AND REINSTALLATION.
4. APPLY AN ASPHALT EMULSION SEAL COAT TO THE EXISTING ASPHALT PAVING.
5. APPLY NEW PAVEMENT STRIPING, MARKINGS, AND SYMBOLS.
6. DEMOLISH AND REPLACE DETERIORATED CONCRETE SIDEWALKS.
7. REMOVE EXISTING SEALANT, AND RESEAL JOINTS BETWEEN NEW CONCRETE SIDEWALKS AND EXISTING CONCRETE SIDEWALKS, CONTROL JOINTS IN THE EXISTING SIDEWALKS, AND JOINTS BETWEEN CURBS AND NEW AND EXISTING SIDEWALKS.
8. FURNISH AND INSTALL A BLUE-COLORED REFLECTORIZED PAVEMENT MARKER TO DELINEATE EXISTING FIRE HYDRANT.
9. REMOVE AND REPLACE PARKING SIGNS.
10. PERFORM CEMENTITIOUS MORTAR REPAIRS IN DRAIN TROUGH INLET.
11. PROVIDE SPECIFIED MANUFACTURER AND CONTRACTOR WARRANTIES.

SITE PLAN: ABILENE AIR TRAFFIC CONTROL TOWER - ASPHALT PAVEMENT REPAIR LOCATIONS

GENERAL NOTES:

- A. ALL DIMENSIONS, EQUIPMENT, UTILITY PIPING/CABLING, AND PENETRATION SIZE, QUANTITY, & LOCATIONS PRESENTED ON THE DRAWINGS SHALL BE FIELD VERIFIED.
- B. THESE DRAWINGS AND DETAILS ACCOMPANY SPECIFICATIONS AND DOCUMENTS THAT COMPRISE A PROJECT MANUAL.
- C. DETAILS ARE DESIGNATED AT REPRESENTATIVE LOCATIONS. EACH LOCATION AND SIMILAR CONDITIONS ARE TO BE TREATED ACCORDINGLY.
- D. UNLESS INDICATED BY THE TERM "EXISTING", ITEMS PRESENTED ON DETAIL DRAWINGS ARE CONSIDERED TO BE NEW AND FURNISHED BY CONTRACTOR.

TYPICAL DETAIL DESIGNATION:

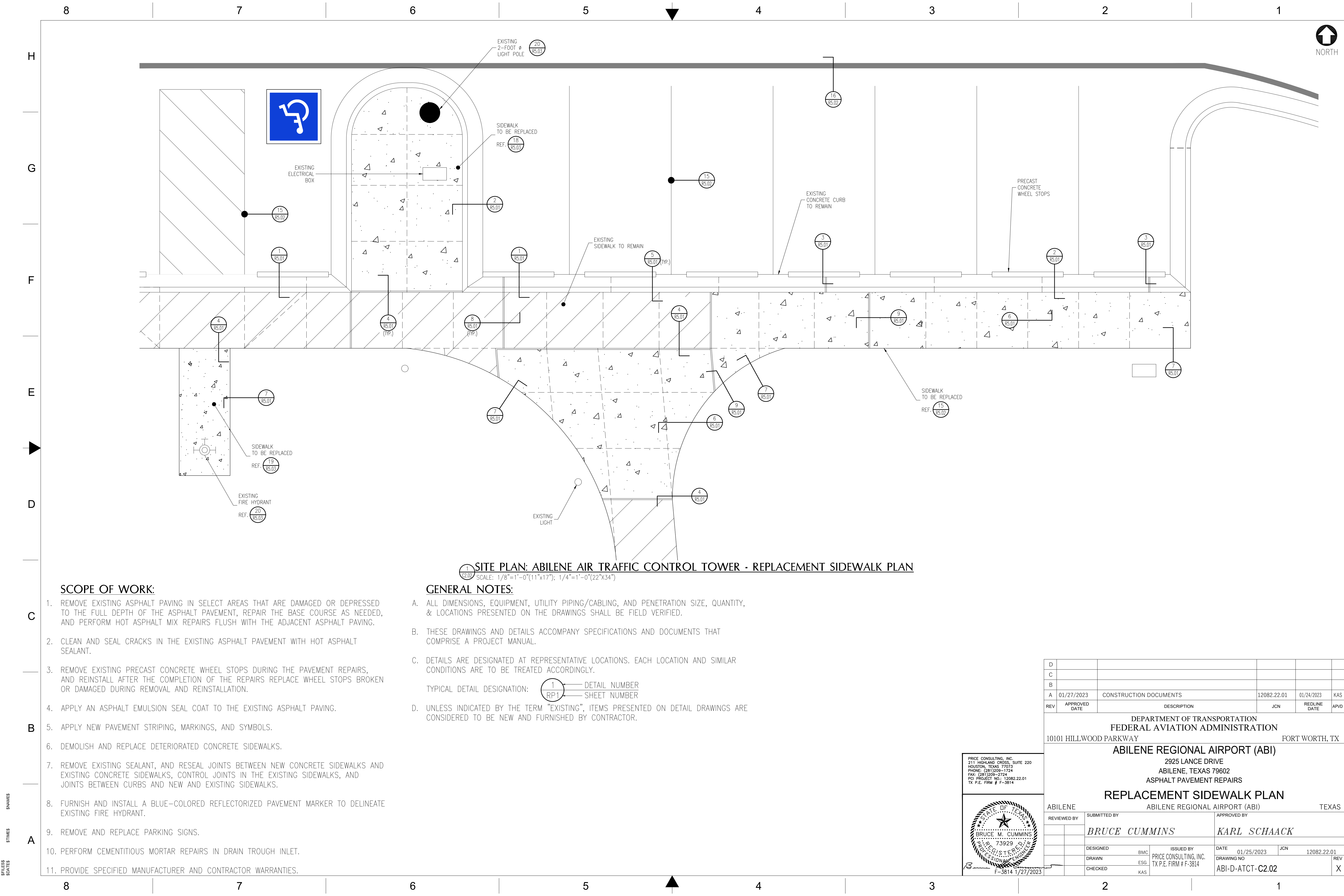


PRICE CONSULTING, INC.  
211 HIGHLAND CROSS, SUITE 220  
HOUSTON, TEXAS 77053  
PHONE: (281)208-1724  
FAX: (281)208-2724  
P.O. PROJECT NO.: 12082.22.01  
TX P.E. FIRM # F-3814

STATE OF TEXAS  
REGISTERED PROFESSIONAL ENGINEER  
BRUCE M. CUMMINS  
73929  
F-3814 1/27/2023

D					
C					
B					
A	01/27/2023	CONSTRUCTION DOCUMENTS	12082.22.01	01/24/2023	KAS
REV	APPROVED DATE	DESCRIPTION	JCN	REDLINE DATE	APVD
DEPARTMENT OF TRANSPORTATION FEDERAL AVIATION ADMINISTRATION 10101 HILLWOOD PARKWAY FORT WORTH, TX ABILENE REGIONAL AIRPORT (ABI) 2925 LANCE DRIVE ABILENE, TEXAS 79602 ASPHALT PAVEMENT REPAIRS ASPHALT PAVEMENT REPAIR LOCATIONS					
ABILENE	ABILENE REGIONAL AIRPORT (ABI)		TEXAS		
REVIEWED BY	SUBMITTED BY		APPROVED BY		
	BRUCE CUMMINS		KARL SCHAACK		
	DESIGNED	BMC	ISSUED BY	DATE	JCN
	DRAWN	ESG	PRICE CONSULTING, INC.	01/25/2023	12082.22.01
	CHECKED	KAS	TX P.E. FIRM # F-3814	DRAWING NO	REV
				ABI-D-ATCT-C2.01	X





1 SITE PLAN: ABILENE AIR TRAFFIC CONTROL TOWER - REPLACEMENT SIDEWALK PLAN  
SCALE: 1/8"=1'-0"(11"x17"); 1/4"=1'-0"(22"x34")

SCOPE OF WORK:

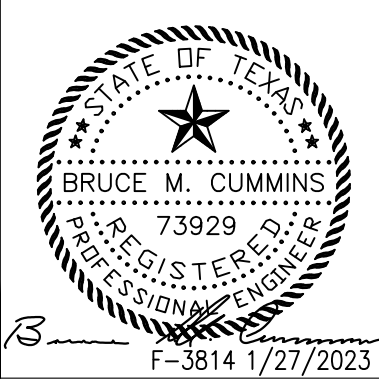
1. REMOVE EXISTING ASPHALT PAVING IN SELECT AREAS THAT ARE DAMAGED OR DEPRESSED TO THE FULL DEPTH OF THE ASPHALT PAVEMENT, REPAIR THE BASE COURSE AS NEEDED, AND PERFORM HOT ASPHALT MIX REPAIRS FLUSH WITH THE ADJACENT ASPHALT PAVING.
2. CLEAN AND SEAL CRACKS IN THE EXISTING ASPHALT PAVEMENT WITH HOT ASPHALT SEALANT.
3. REMOVE EXISTING PRECAST CONCRETE WHEEL STOPS DURING THE PAVEMENT REPAIRS, AND REINSTALL AFTER THE COMPLETION OF THE REPAIRS REPLACE WHEEL STOPS BROKEN OR DAMAGED DURING REMOVAL AND REINSTALLATION.
4. APPLY AN ASPHALT EMULSION SEAL COAT TO THE EXISTING ASPHALT PAVING.
5. APPLY NEW PAVEMENT STRIPING, MARKINGS, AND SYMBOLS.
6. DEMOLISH AND REPLACE DETERIORATED CONCRETE SIDEWALKS.
7. REMOVE EXISTING SEALANT, AND RESEAL JOINTS BETWEEN NEW CONCRETE SIDEWALKS AND EXISTING CONCRETE SIDEWALKS, CONTROL JOINTS IN THE EXISTING SIDEWALKS, AND JOINTS BETWEEN CURBS AND NEW AND EXISTING SIDEWALKS.
8. FURNISH AND INSTALL A BLUE-COLORED REFLECTORIZED PAVEMENT MARKER TO DELINEATE EXISTING FIRE HYDRANT.
9. REMOVE AND REPLACE PARKING SIGNS.
10. PERFORM CEMENTITIOUS MORTAR REPAIRS IN DRAIN TROUGH INLET.
11. PROVIDE SPECIFIED MANUFACTURER AND CONTRACTOR WARRANTIES.

GENERAL NOTES:

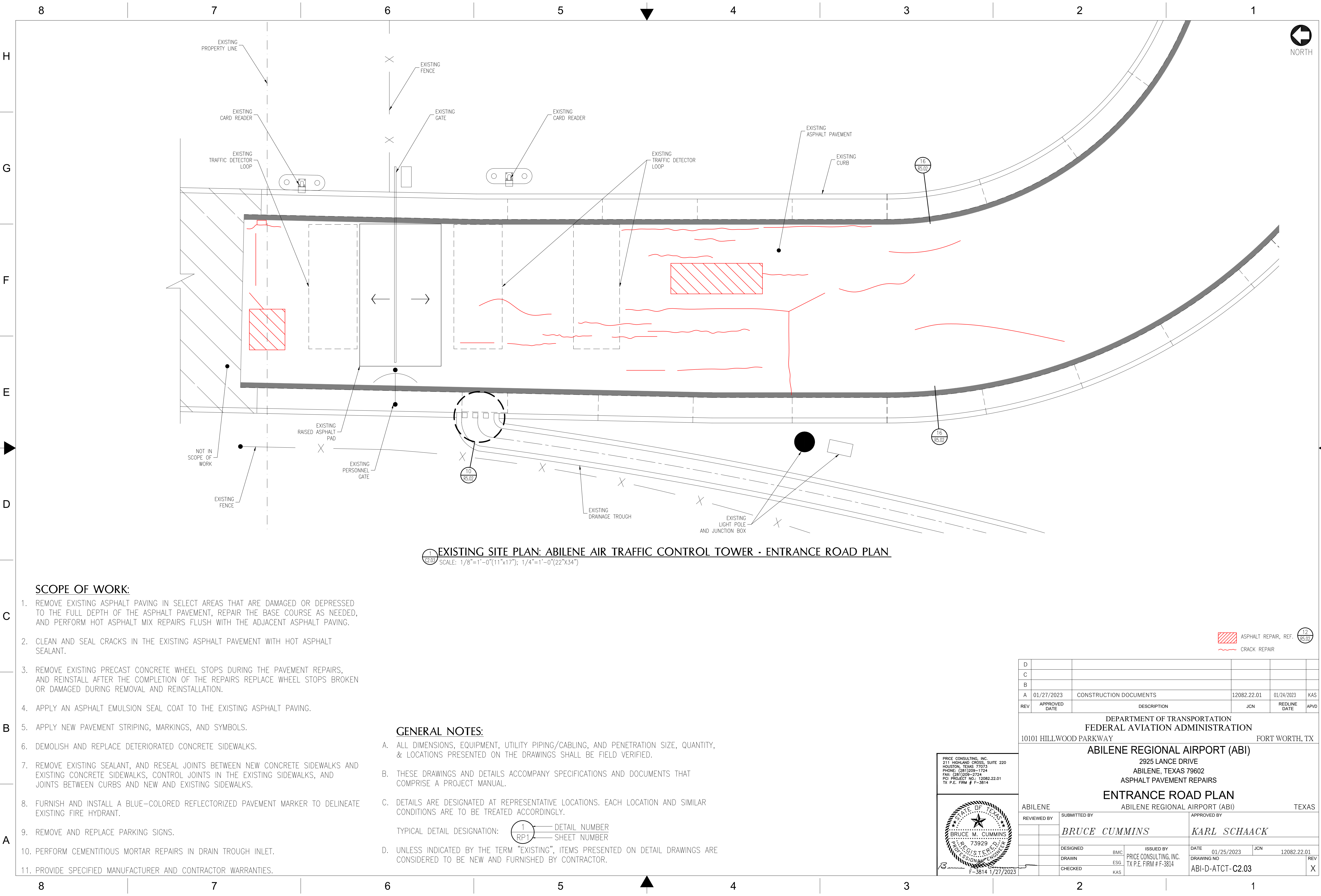
- A. ALL DIMENSIONS, EQUIPMENT, UTILITY PIPING/CABLING, AND PENETRATION SIZE, QUANTITY, & LOCATIONS PRESENTED ON THE DRAWINGS SHALL BE FIELD VERIFIED.
- B. THESE DRAWINGS AND DETAILS ACCOMPANY SPECIFICATIONS AND DOCUMENTS THAT COMPRISE A PROJECT MANUAL.
- C. DETAILS ARE DESIGNATED AT REPRESENTATIVE LOCATIONS. EACH LOCATION AND SIMILAR CONDITIONS ARE TO BE TREATED ACCORDINGLY.
- D. UNLESS INDICATED BY THE TERM "EXISTING", ITEMS PRESENTED ON DETAIL DRAWINGS ARE CONSIDERED TO BE NEW AND FURNISHED BY CONTRACTOR.

TYPICAL DETAIL DESIGNATION: 1 — DETAIL NUMBER  
RP1 — SHEET NUMBER

PRICE CONSULTING, INC.  
211 HIGHLAND CROSS, SUITE 220  
HOUSTON, TEXAS 77053  
PHONE: (281)208-1724  
FAX: (281)208-2724  
P.O. PROJECT NO.: 12082.22.01  
TX P.E. FIRM # F-3814



D					
C					
B					
A	01/27/2023	CONSTRUCTION DOCUMENTS	12082.22.01	01/24/2023	KAS
REV	APPROVED DATE	DESCRIPTION	JCN	REDLINE DATE	APVD
DEPARTMENT OF TRANSPORTATION FEDERAL AVIATION ADMINISTRATION 10101 HILLWOOD PARKWAY FORT WORTH, TX ABILENE REGIONAL AIRPORT (ABI) 2925 LANCE DRIVE ABILENE, TEXAS 79602 ASPHALT PAVEMENT REPAIRS REPLACEMENT SIDEWALK PLAN					
ABILENE	ABILENE REGIONAL AIRPORT (ABI)		TEXAS		
REVIEWED BY	SUBMITTED BY		APPROVED BY		
	BRUCE CUMMINS		KARL SCHAACK		
	DESIGNED	BMC	ISSUED BY	DATE	JCN
	DRAWN	ESG	PRICE CONSULTING, INC.	01/25/2023	12082.22.01
	CHECKED	KAS	TX P.E. FIRM # F-3814	DRAWING NO	ABI-D-ATCT-C2.02
				REV	X



1 EXISTING SITE PLAN: ABILENE AIR TRAFFIC CONTROL TOWER - ENTRANCE ROAD PLAN  
SCALE: 1/8"=1'-0"(11"x17"); 1/4"=1'-0"(22"x34")

SCOPE OF WORK:

1. REMOVE EXISTING ASPHALT PAVING IN SELECT AREAS THAT ARE DAMAGED OR DEPRESSED TO THE FULL DEPTH OF THE ASPHALT PAVEMENT, REPAIR THE BASE COURSE AS NEEDED, AND PERFORM HOT ASPHALT MIX REPAIRS FLUSH WITH THE ADJACENT ASPHALT PAVING.
2. CLEAN AND SEAL CRACKS IN THE EXISTING ASPHALT PAVEMENT WITH HOT ASPHALT SEALANT.
3. REMOVE EXISTING PRECAST CONCRETE WHEEL STOPS DURING THE PAVEMENT REPAIRS, AND REINSTALL AFTER THE COMPLETION OF THE REPAIRS REPLACE WHEEL STOPS BROKEN OR DAMAGED DURING REMOVAL AND REINSTALLATION.
4. APPLY AN ASPHALT EMULSION SEAL COAT TO THE EXISTING ASPHALT PAVING.
5. APPLY NEW PAVEMENT STRIPING, MARKINGS, AND SYMBOLS.
6. DEMOLISH AND REPLACE DETERIORATED CONCRETE SIDEWALKS.
7. REMOVE EXISTING SEALANT, AND RESEAL JOINTS BETWEEN NEW CONCRETE SIDEWALKS AND EXISTING CONCRETE SIDEWALKS, CONTROL JOINTS IN THE EXISTING SIDEWALKS, AND JOINTS BETWEEN CURBS AND NEW AND EXISTING SIDEWALKS.
8. FURNISH AND INSTALL A BLUE-COLORED REFLECTORIZED PAVEMENT MARKER TO DELINEATE EXISTING FIRE HYDRANT.
9. REMOVE AND REPLACE PARKING SIGNS.
10. PERFORM CEMENTITIOUS MORTAR REPAIRS IN DRAIN TROUGH INLET.
11. PROVIDE SPECIFIED MANUFACTURER AND CONTRACTOR WARRANTIES.

GENERAL NOTES:

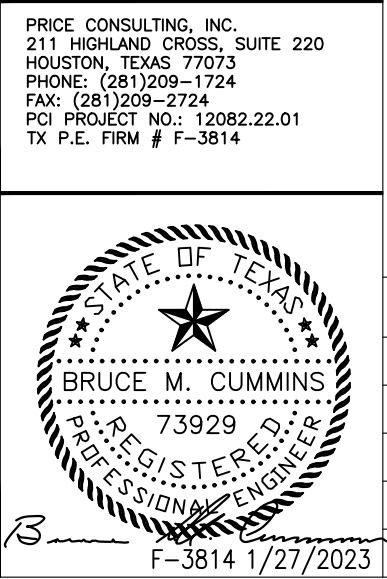
- A. ALL DIMENSIONS, EQUIPMENT, UTILITY PIPING/CABLING, AND PENETRATION SIZE, QUANTITY, & LOCATIONS PRESENTED ON THE DRAWINGS SHALL BE FIELD VERIFIED.
- B. THESE DRAWINGS AND DETAILS ACCOMPANY SPECIFICATIONS AND DOCUMENTS THAT COMPRISE A PROJECT MANUAL.
- C. DETAILS ARE DESIGNATED AT REPRESENTATIVE LOCATIONS. EACH LOCATION AND SIMILAR CONDITIONS ARE TO BE TREATED ACCORDINGLY.
- D. UNLESS INDICATED BY THE TERM "EXISTING", ITEMS PRESENTED ON DETAIL DRAWINGS ARE CONSIDERED TO BE NEW AND FURNISHED BY CONTRACTOR.

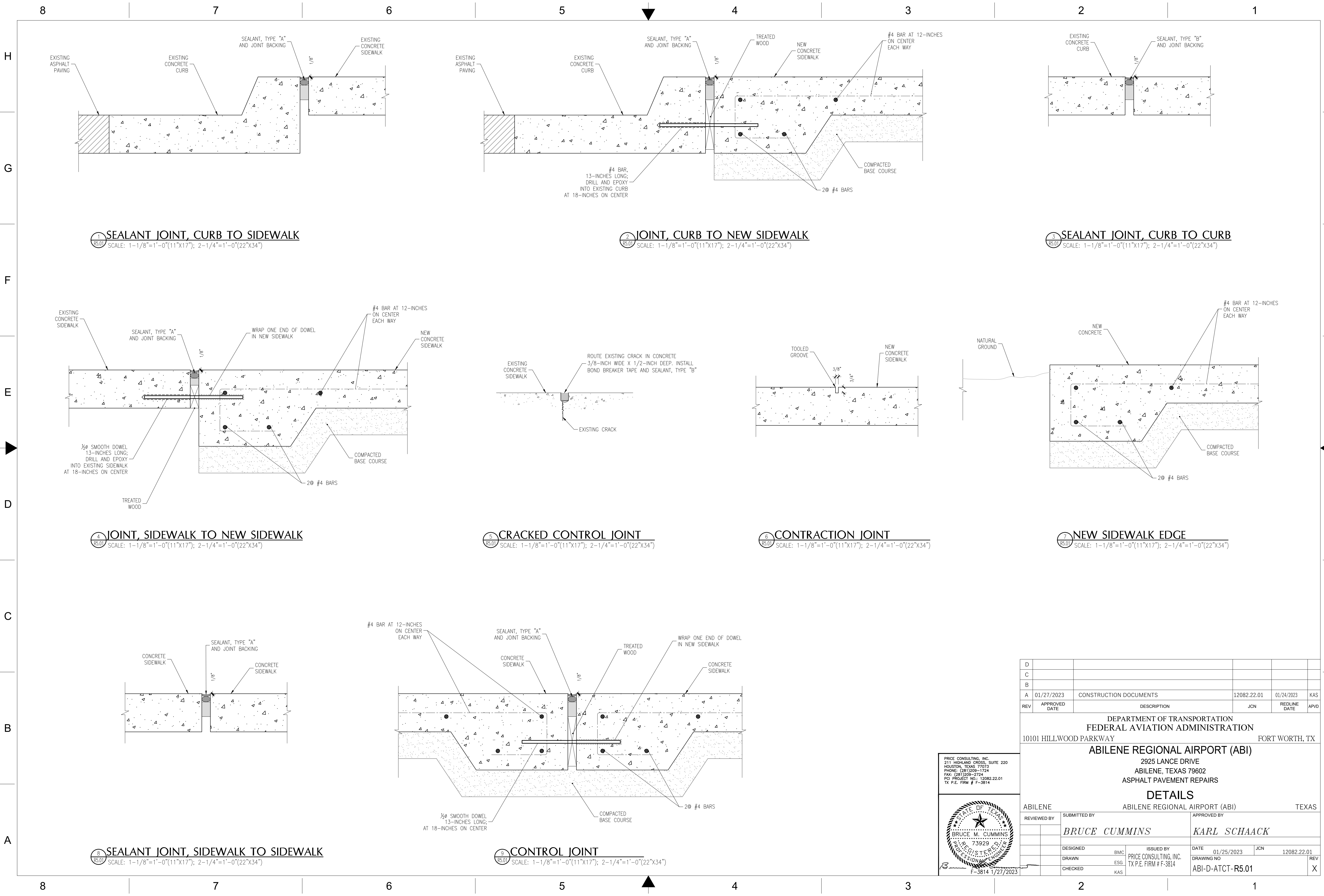
TYPICAL DETAIL DESIGNATION: 1 RP1

1 ———— DETAIL NUMBER  
RP1 ———— SHEET NUMBER

ASPHALT REPAIR, REF. 12  
CRACK REPAIR

D					
C					
B					
A	01/27/2023	CONSTRUCTION DOCUMENTS	12082.22.01	01/24/2023	KAS
REV	APPROVED DATE	DESCRIPTION	JCN	REDLINE DATE	APVD
DEPARTMENT OF TRANSPORTATION FEDERAL AVIATION ADMINISTRATION 10101 HILLWOOD PARKWAY ABILENE REGIONAL AIRPORT (ABI) 2925 LANCE DRIVE ABILENE, TEXAS 79602 ASPHALT PAVEMENT REPAIRS ENTRANCE ROAD PLAN ABILENE REGIONAL AIRPORT (ABI) TEXAS					
ABILENE	REVIEWED BY	SUBMITTED BY	APPROVED BY		
		BRUCE CUMMINS	KARL SCHAACK		
	DESIGNED	BMC	ISSUED BY	DATE	JCN
	DRAWN	ESG	PRICE CONSULTING, INC.	01/25/2023	12082.22.01
	CHECKED	KAS	TX P.E. FIRM # F-3814	DRAWING NO	REV
				ABI-D-ATCT-C2.03	X

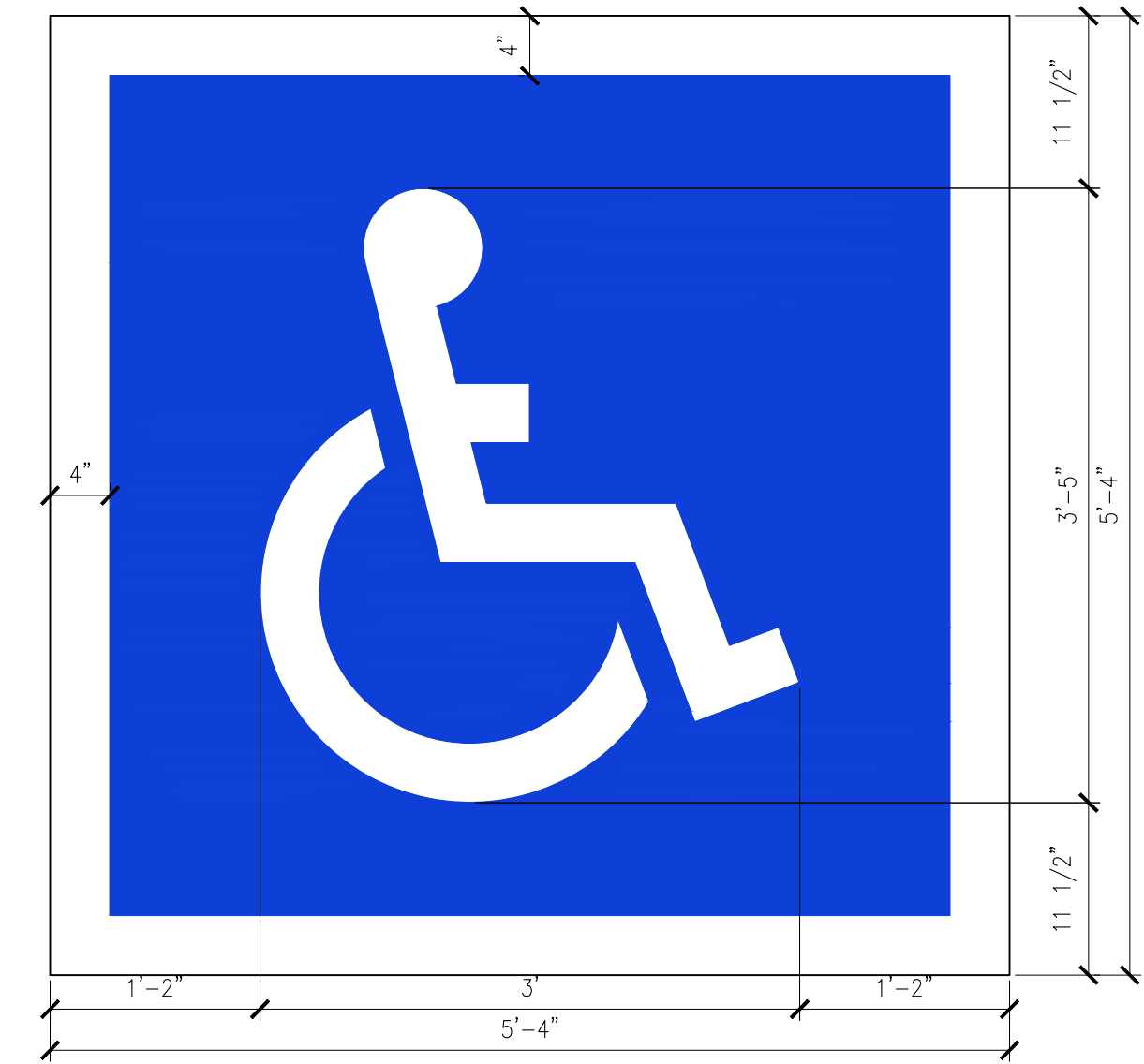




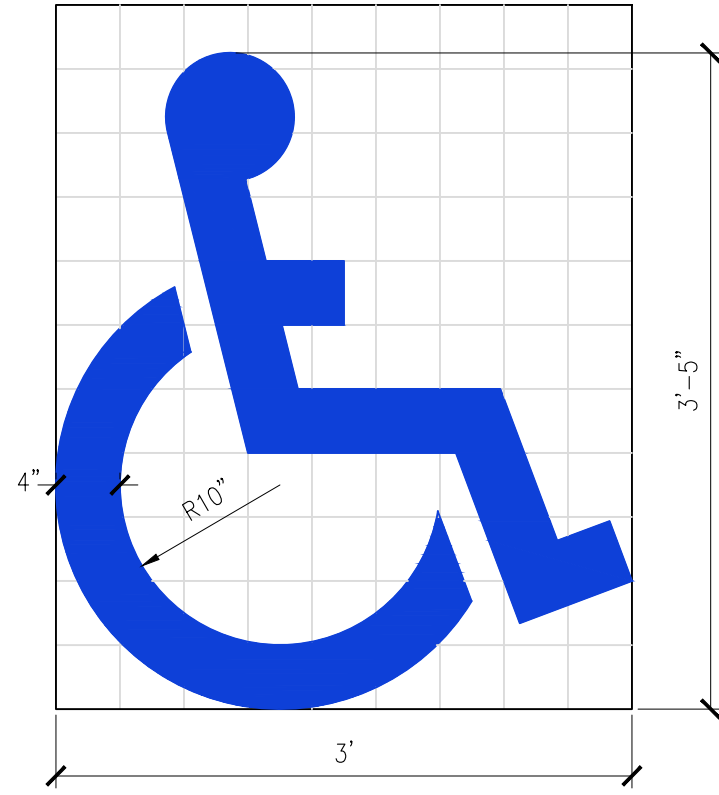




H  
G  
F  
E  
D  
C  
B  
A

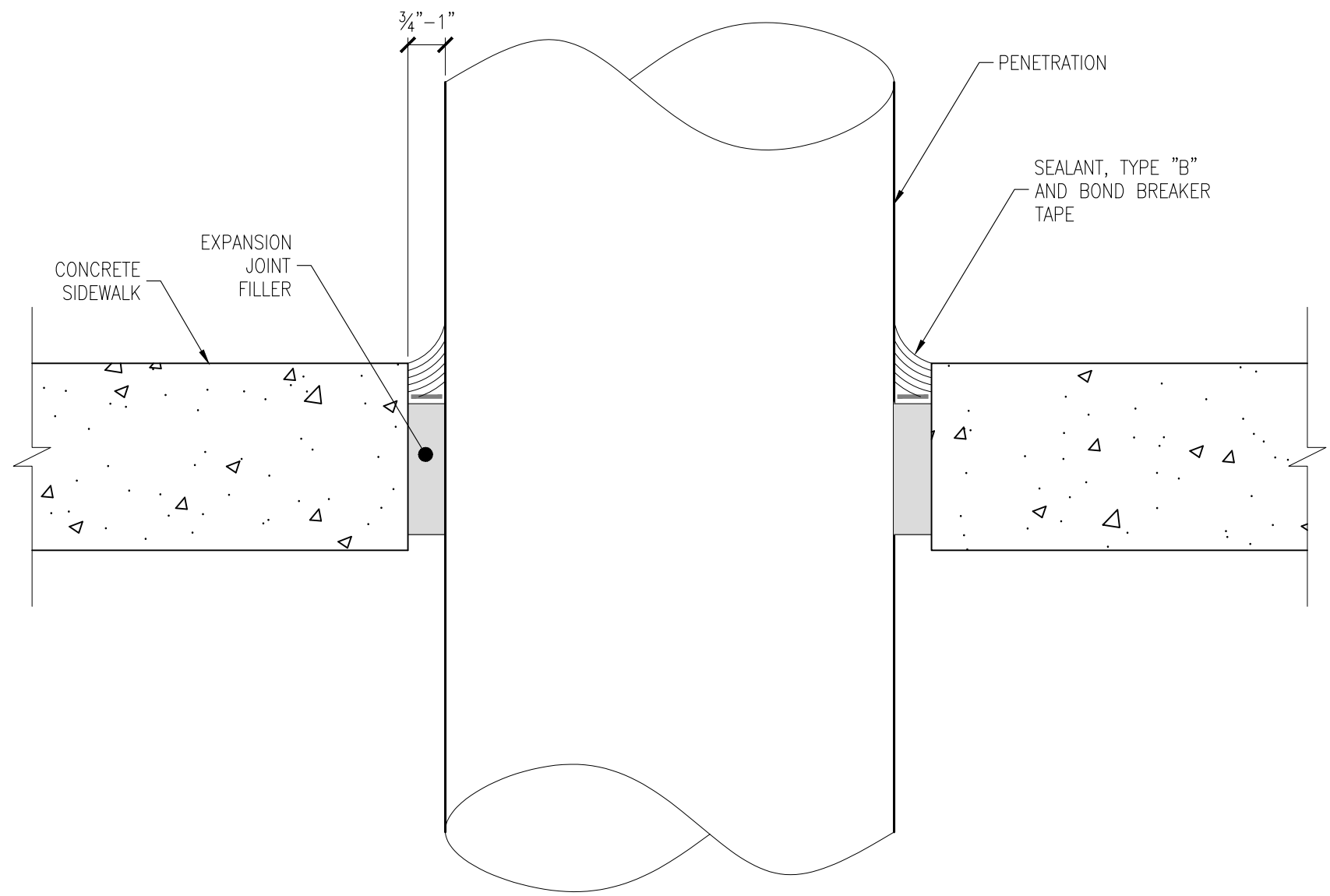


ACCESSIBLE PARKING SPACE SYMBOL (STANDARD)  
WITH BLUE BACKGROUND AND WHITE BORDER

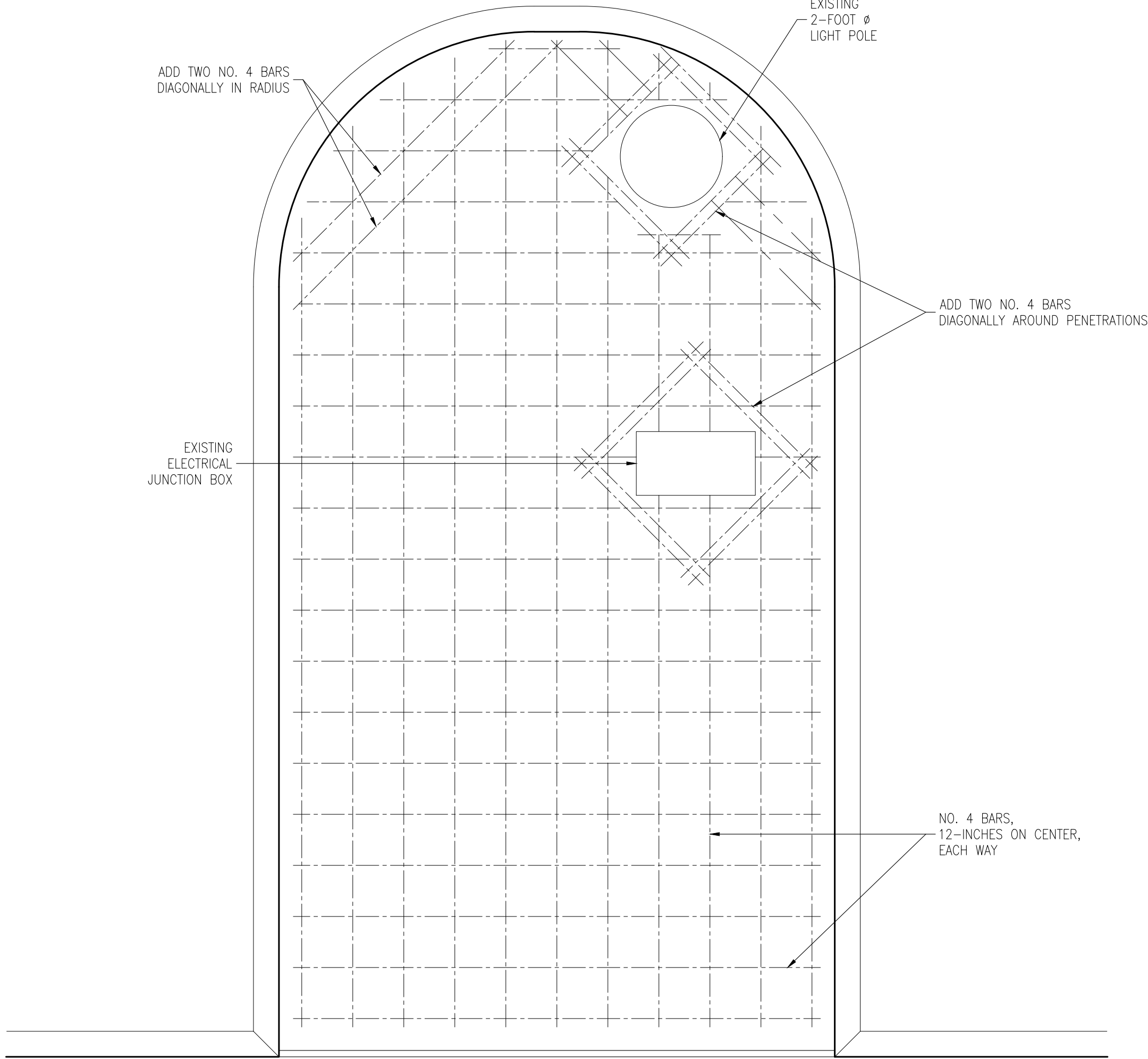


ACCESSIBLE PARKING SPACE SYMBOL (STANDARD)  
(GRID IS 4" (IN) SQUARE; MARKING AREA=3.09 SQ.FT.)

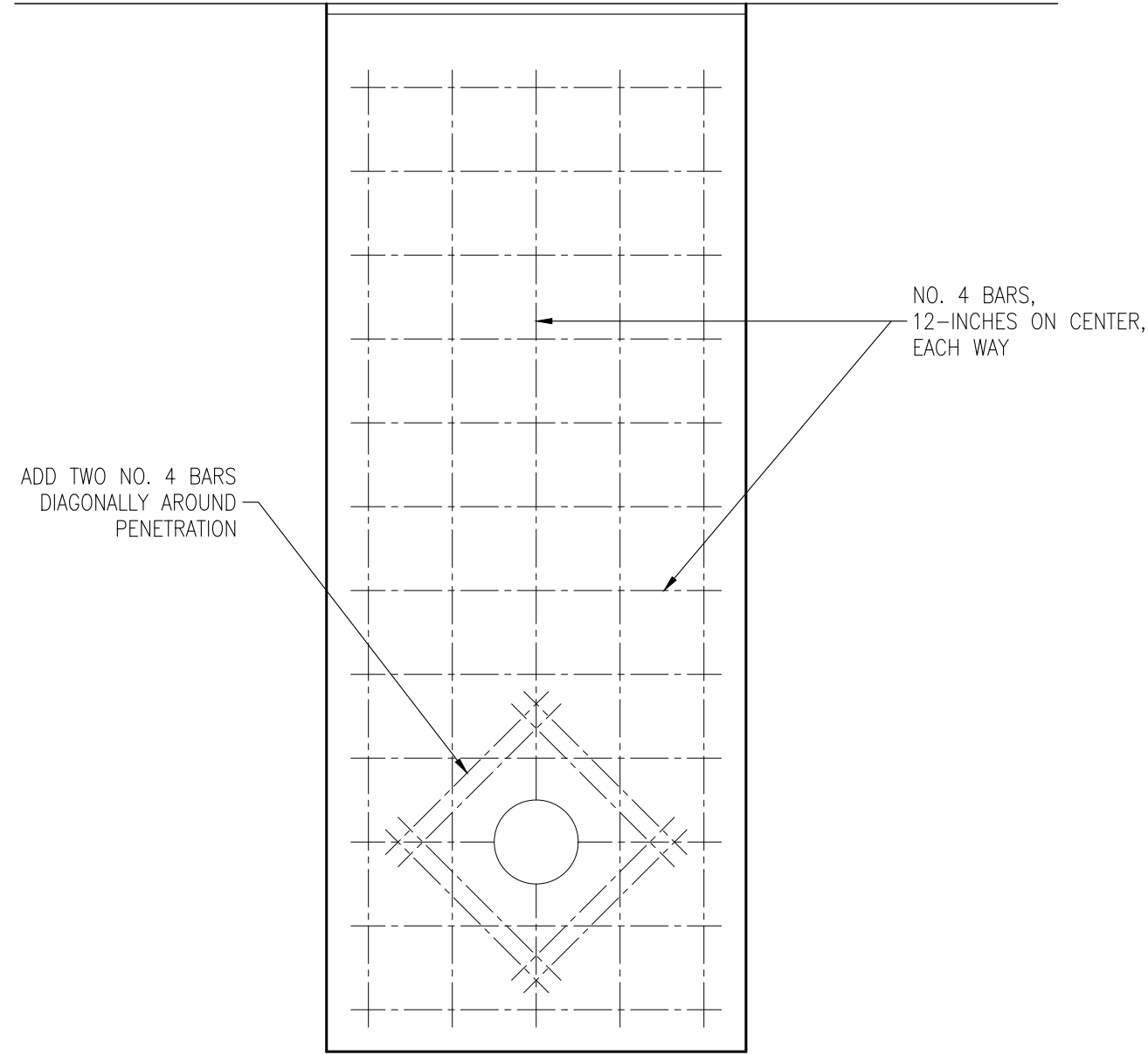
17 ACCESSIBLE PARKING SYMBOL  
SCALE: 1/2"=1'-0" (11"x17"); 1"=1'-0" (22"x34") (PLAN VIEW)



20 SIDEWALK PENETRATION DETAIL  
SCALE: 1-1/2"=1'-0" (11"x17"); 3"=1'-0" (22"x34")



18 SIDE WALK REINFORCING PLAN  
SCALE: 1/4"=1'-0" (11"x17"); 1/2"=1'-0" (22"x34") (PLAN VIEW)



19 SIDE WALK REINFORCING PLAN  
SCALE: 1/4"=1'-0" (11"x17"); 1/2"=1'-0" (22"x34") (PLAN VIEW)

D					
C					
B					
A	01/27/2023	CONSTRUCTION DOCUMENTS	12082.22.01	01/24/2023	KAS
REV	APPROVED DATE	DESCRIPTION	JCN	REDLINE DATE	APVD
DEPARTMENT OF TRANSPORTATION FEDERAL AVIATION ADMINISTRATION 10101 HILLWOOD PARKWAY FORT WORTH, TX ABILENE REGIONAL AIRPORT (ABI) 2925 LANCE DRIVE ABILENE, TEXAS 79602 ASPHALT PAVEMENT REPAIRS DETAILS ABILENE ABILENE REGIONAL AIRPORT (ABI) TEXAS					
REVIEWED BY	SUBMITTED BY <b>BRUCE CUMMINS</b>		APPROVED BY <b>KARL SCHAACK</b>		
	DESIGNED	BMC	ISSUED BY	DATE	JCN
	DRAWN	ESG	PRICE CONSULTING, INC.	01/25/2023	12082.22.01
	CHECKED	KAS	TX P.E. FIRM # F-3814	DRAWING NO.	REV
				ABI-D-ATCT-R5.03	X

