

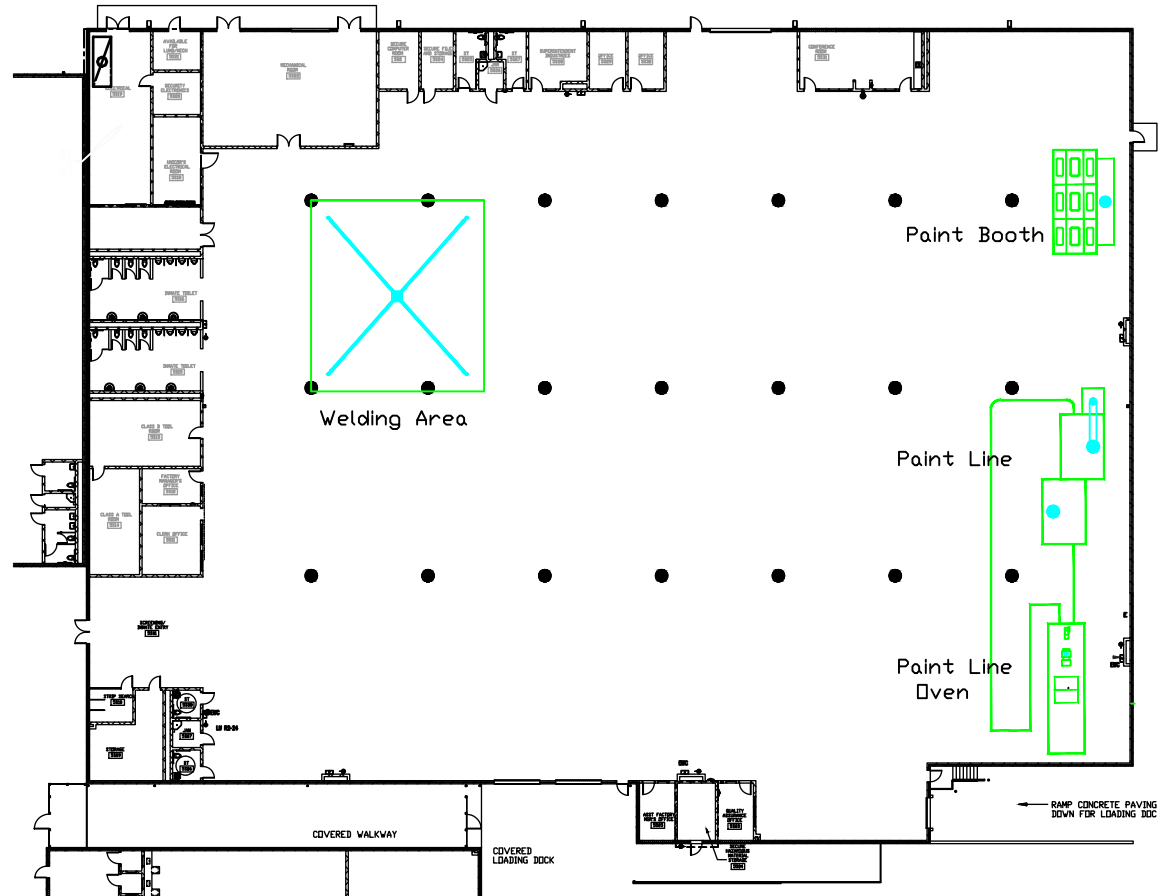
NOTICE: This drawing is the property of Federal Prison Industries and contains proprietary information that is not to be used except in consideration of bids or proposals tendered herewith. Reproductions or copying of this drawing, whole or in part, is prohibited.

REVISIONS

REV	DESCRIPTION	DATE	APPROVED
-	INT	10/22	

NOTES:

1. All construction will be in accordance with BOP Program Statements 1600 and 4200 and BOP Technical Design Guidelines.
2. Welding exhaust system shall be installed in accordance with Occupational Safety and Health Standards 1910 Subpart Q.
3. Provide curb for welding exhaust fan in accordance with BOP Technical Design Guideline Section 07 41 13.
4. Paint line oven exhaust shall be installed in accordance with NFPA 86 and 91.
5. Utilize duct systems listed as approved for use without automatic fire protection in accordance with NFPA 91.
6. All paint exhaust systems shall be installed in accordance with NFPA 33.
7. Install security barrier in accordance with Technical Design Guidelines Section 01 00 00 Part 1.5 B.



		UNLESS OTHERWISE SPECIFIED DIMENSIONS ARE IN INCHES.	CONTRACT NO.		FEDERAL PRISON INDUSTRIES USP Hazelton 1640 SKY VIEW DRIVE BRUCETON MILLS, WV 26525			
		TOLERANCES ARE	FILENAME		TITLE			
		1PL ANGLES ± 2'	APPROVALS		Hazelton Exhaust Expansion			
		2PL ±.015 FRACTIONS	DRAWN G. SMITH		SIZE CAGE CODE		DWG NO.	
		3PL ±.005	CHECKED		C		HAF1220001-01	
		THIRD ANGLE PROJECTION	REVIEWED		SCALE NONE		SHEET 1	
NEXT ASSY USED ON			APPROVED				REV. INT	
APPLICATION			DATE					

2

1

NOTICE: This drawing is the property of Federal Prison Industries and contains proprietary information that is not to be used except in consideration of bids or proposals tendered herewith. Reproductions or copying of this drawing, whole or in part, is prohibited.

REVISIONS

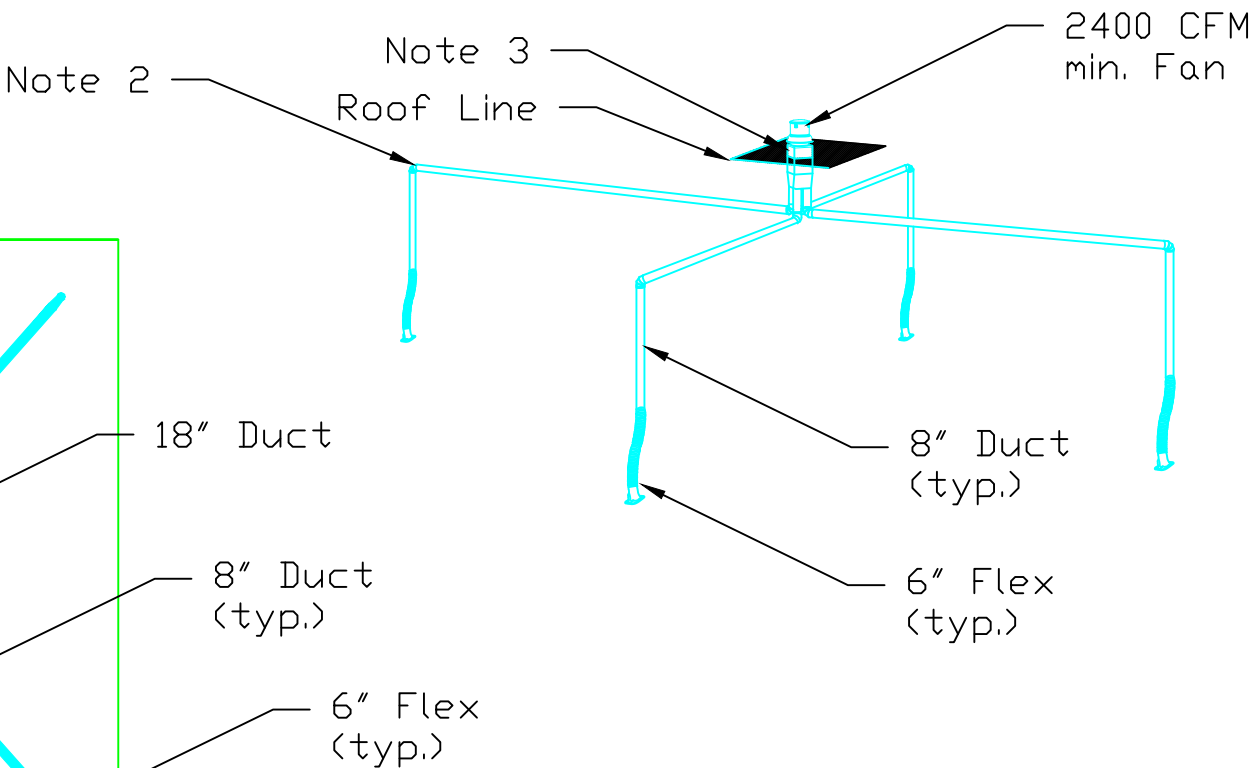
REV	DESCRIPTION	DATE	APPROVED
-	INT	10/22	

B

B

A

A



Welding Area

SIZE C	CAGE CODE	DWG NO. HAF1220001-05
SCALE NONE	SHEET 1	REV. INT

2

1

2

1

NOTICE: This drawing is the property of Federal Prison Industries and contains proprietary information that is not to be used except in consideration of bids or proposals tendered herewith. Reproductions or copying of this drawing, whole or in part, is prohibited.

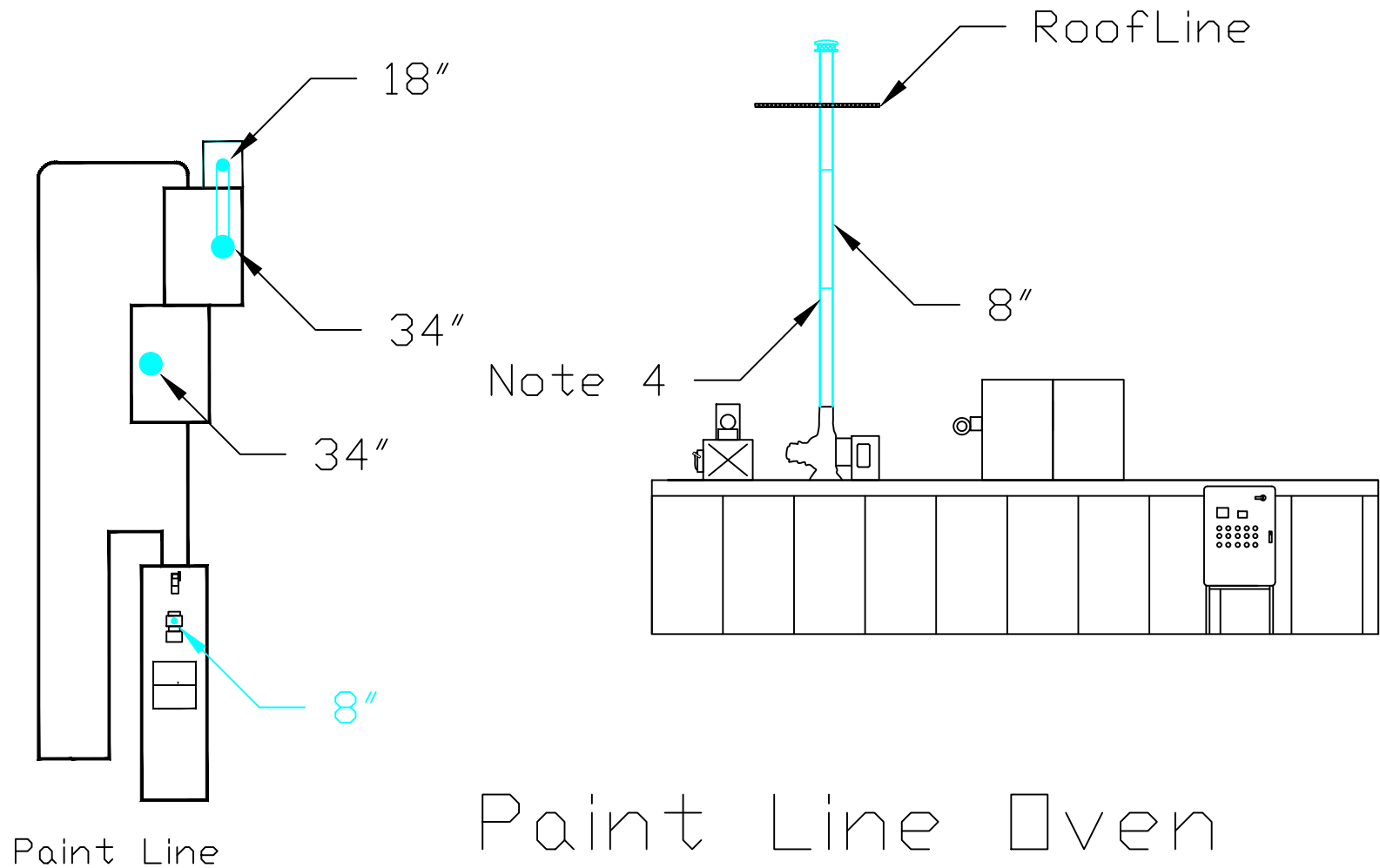
REVISIONS			
REV	DESCRIPTION	DATE	APPROVED
-	INT	10/22	

B

B

A

A



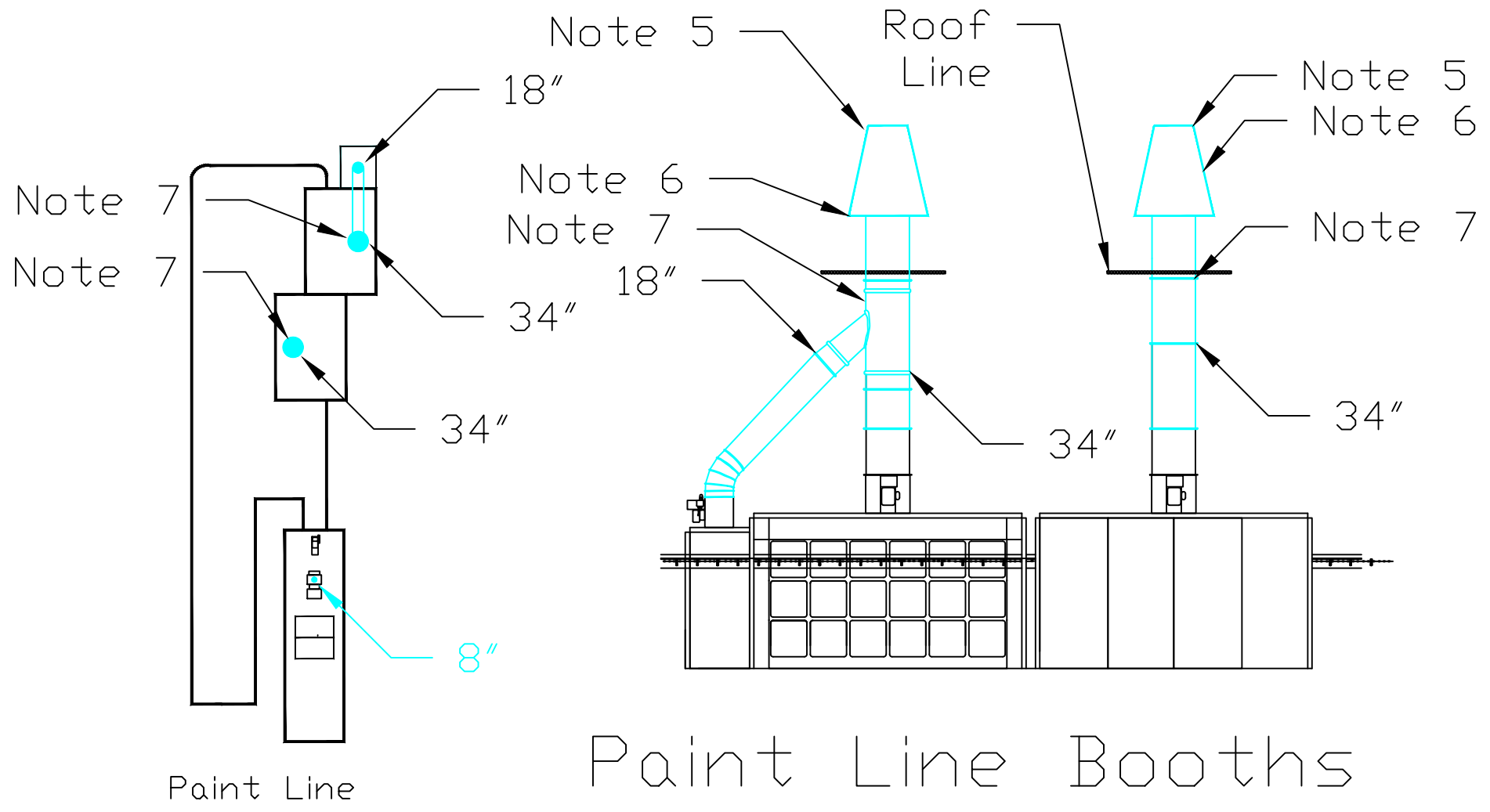
SIZE	CAGE CODE	DWG NO.
C		HAF1220001-07
SCALE	NONE	SHEET 1
		REV. INT

2

1

NOTICE: This drawing is the property of Federal Prison Industries and contains proprietary information that is not to be used except in consideration of bids or proposals tendered herewith. Reproductions or copying of this drawing, whole or in part, is prohibited.

REVISIONS			
REV	DESCRIPTION	DATE	APPROVED
-	INT	10/22	

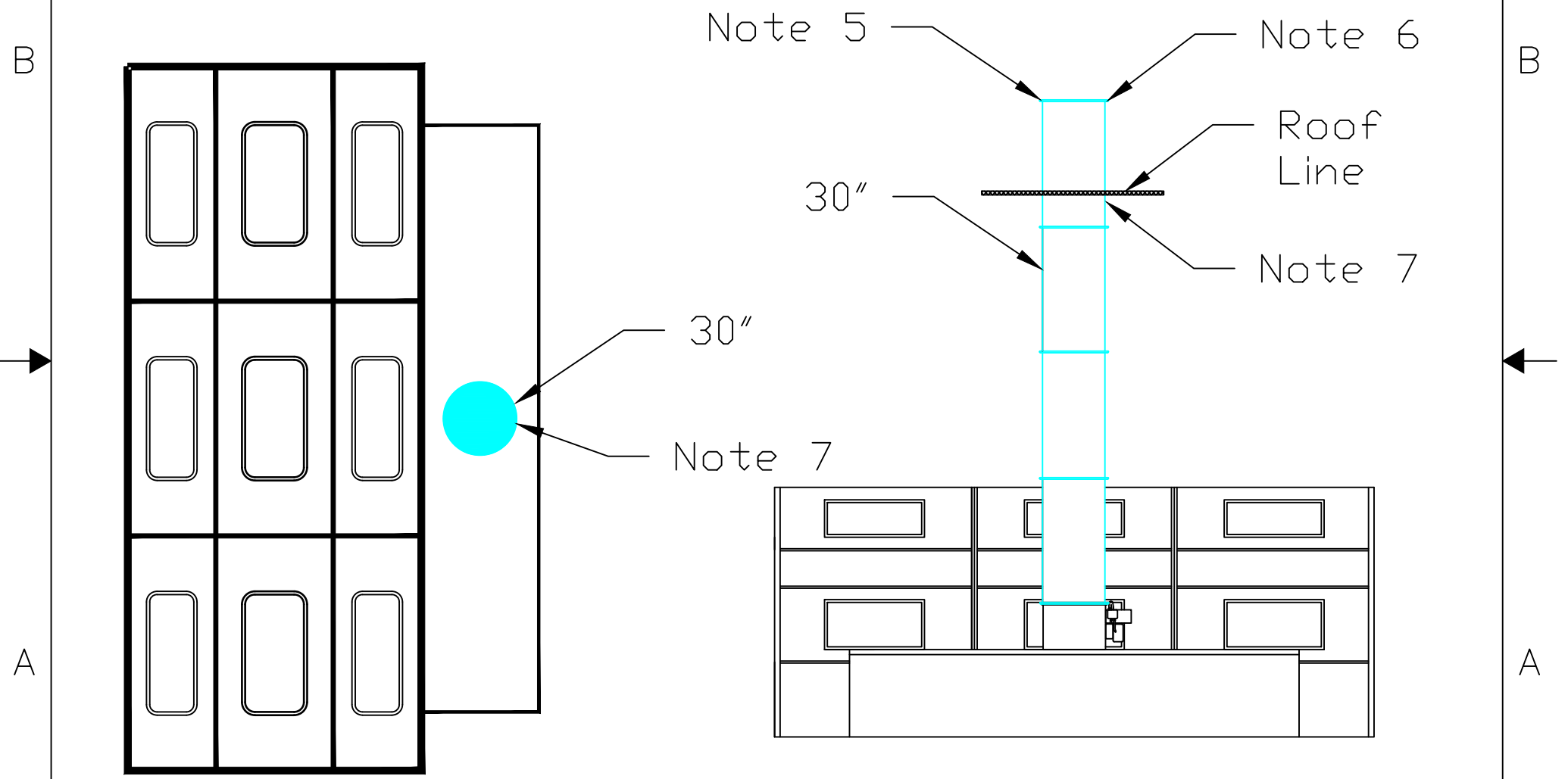


Paint Line Booths

SIZE C	CAGE CODE	DWG NO. HAF1220001-09
SCALE NONE	SHEET 1	REV. INT

NOTICE: This drawing is the property of Federal Prison Industries and contains proprietary information that is not to be used except in consideration of bids or proposals tendered herewith. Reproductions or copying of this drawing, whole or in part, is prohibited.

REVISIONS			
REV	DESCRIPTION	DATE	APPROVED
-	INT	10/22	



Cumberland Booth

SIZE C	CAGE CODE	DWG NO. HAF1220001-11
SCALE NONE	SHEET 1	REV. INT