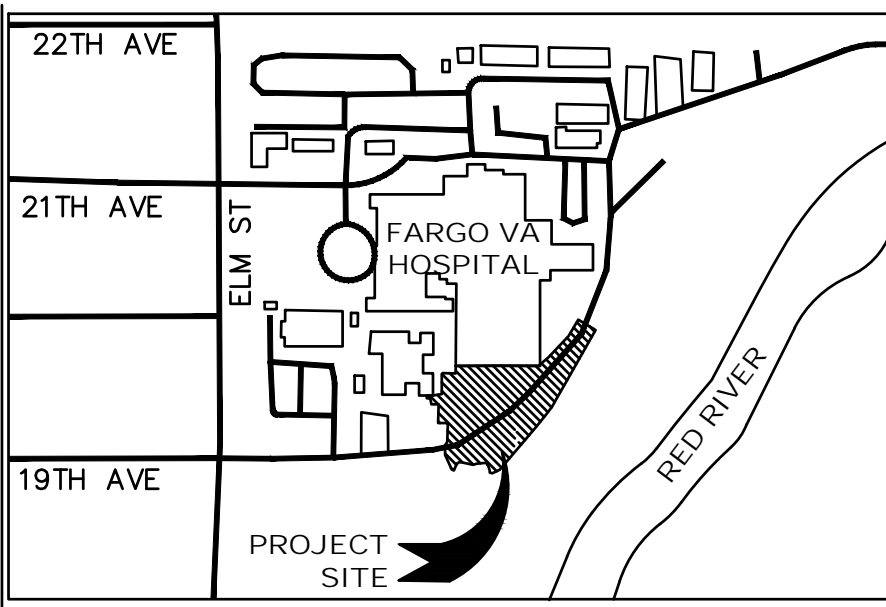
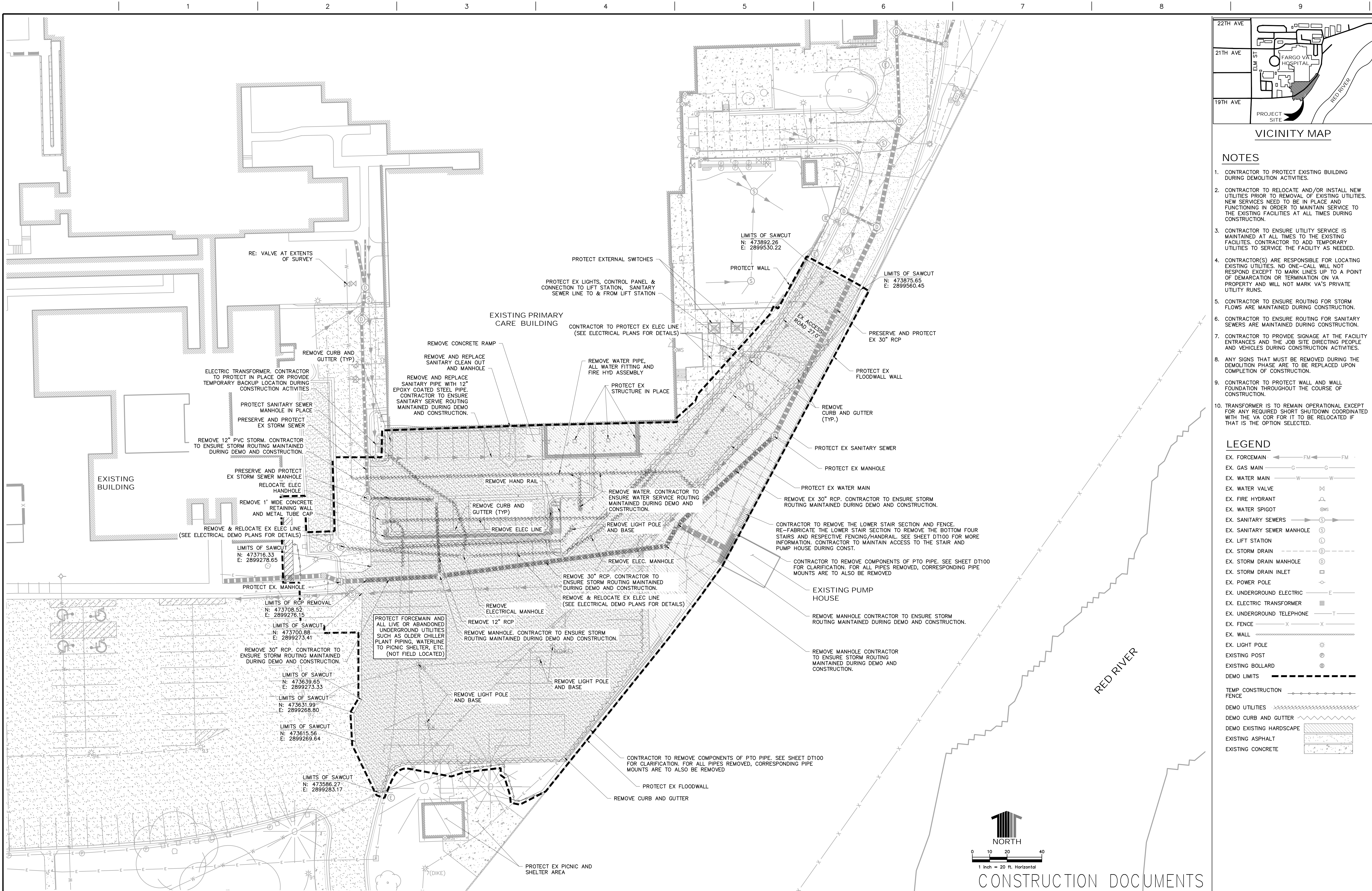




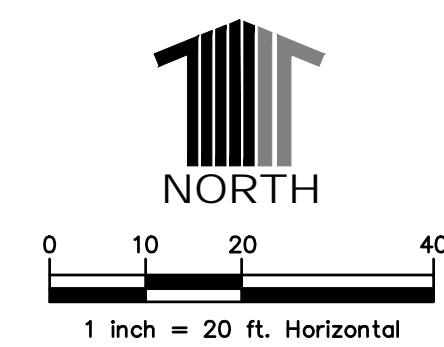
CONSULTANTS: -Calibre CALIBRE 9090 S RIDGELINE BLVD, SUITE 105 HIGHLANDS RANCH, COLORADO 80129 PHONE: (303) 730-0434 Albertson Engineering Inc. ALBERTSON ENGINEERING, INC. 315 NORTH MAIN AVENUE, SUITE 200 SIOUX FALLS, SOUTH DAKOTA 57104 PH: (605) 274-0880 SUMMIT FIRE CONSULTING 575 MINNEHAHA AVE WEST ST. PAUL, MINNESOTA 55103 (612) 387-7050		ARCHITECT FOURFRONT DESIGN INC. FOURFRONT DESIGN, INC. 517 7TH STREET RAPID CITY, SOUTH DAKOTA 57701 PH: (605) 342-9470 FAX: (605) 342-2377 WWW.FOURFRONTDESIGN.COM		Drawing Title SURVEY SHEET Approved: Project Director FARGO VAHCS		Project Title EXPAND BLDG. 1 FOR PRIMARY CARE Location 2101 ELM STREET FARGO, ND 58102 Date 11/16/2021 Checked JAG Drawn WFP		Project Number 437-315 Building Number 1 Drawing Number CV100 Dwg. 9 of 128		Office of Construction and Facilities Management Department of Veterans Affairs	
---------------------------------------------------------------------------------------------------------------------------------------------------------------------------------------------------------------------------------------------------------------------------------------------------------------------------------------------------------------------------------------------------------------------------	--	-----------------------------------------------------------------------------------------------------------------------------------------------------------------------------------------------------------	--	--------------------------------------------------------------------------------------------------------	--	------------------------------------------------------------------------------------------------------------------------------------------------------------------------------------------	--	--------------------------------------------------------------------------------------------------------------------	--	--------------------------------------------------------------------------------------------------	--



- NOTES**
- CONTRACTOR TO PROTECT EXISTING BUILDING DURING DEMOLITION ACTIVITIES.
 - CONTRACTOR TO RELOCATE AND/OR INSTALL NEW UTILITIES PRIOR TO REMOVAL OF EXISTING UTILITIES. NEW SERVICES NEED TO BE IN PLACE AND FUNCTIONING IN ORDER TO MAINTAIN SERVICE TO THE EXISTING FACILITIES AT ALL TIMES DURING CONSTRUCTION.
 - CONTRACTOR TO ENSURE UTILITY SERVICE IS MAINTAINED AT ALL TIMES TO THE EXISTING FACILITIES. CONTRACTOR TO ADD TEMPORARY UTILITIES TO SERVICE THE FACILITY AS NEEDED.
 - CONTRACTOR(S) ARE RESPONSIBLE FOR LOCATING EXISTING UTILITIES. NO ONE-CALL WILL NOT RESPOND EXCEPT TO MARK LINES UP TO A POINT OF DEMARCATION OR TERMINATION ON VA PROPERTY AND WILL NOT MARK VA'S PRIVATE UTILITY RUNS.
 - CONTRACTOR TO ENSURE ROUTING FOR STORM FLOWS ARE MAINTAINED DURING CONSTRUCTION.
 - CONTRACTOR TO ENSURE ROUTING FOR SANITARY SEWERS ARE MAINTAINED DURING CONSTRUCTION.
 - CONTRACTOR TO PROVIDE SIGNAGE AT THE FACILITY ENTRANCES AND THE JOB SITE DIRECTING PEOPLE AND VEHICLES DURING CONSTRUCTION ACTIVITIES.
 - ANY SIGNS THAT MUST BE REMOVED DURING THE DEMOLITION PHASE ARE TO BE REPLACED UPON COMPLETION OF CONSTRUCTION.
 - CONTRACTOR TO PROTECT WALL AND WALL FOUNDATION THROUGHOUT THE COURSE OF CONSTRUCTION.
 - TRANSFORMER IS TO REMAIN OPERATIONAL EXCEPT FOR ANY REQUIRED SHORT SHUTDOWN COORDINATED WITH THE VA COR FOR IT TO BE RELOCATED IF THAT IS THE OPTION SELECTED.

LEGEND

EX. FORCEMAIN	FM
EX. GAS MAIN	G
EX. WATER MAIN	W
EX. WATER VALVE	WV
EX. FIRE HYDRANT	HD
EX. WATER SPIGOT	WS
EX. SANITARY SEWERS	S
EX. SANITARY SEWER MANHOLE	SM
EX. LIFT STATION	LS
EX. STORM DRAIN	SD
EX. STORM DRAIN MANHOLE	SDM
EX. STORM DRAIN INLET	SDI
EX. POWER POLE	PP
EX. UNDERGROUND ELECTRIC	E
EX. ELECTRIC TRANSFORMER	ET
EX. UNDERGROUND TELEPHONE	T
EX. FENCE	X
EX. WALL	W
EX. LIGHT POLE	LP
EXISTING POST	P
EXISTING BOLLARD	B
DEMO LIMITS	---
TEMP CONSTRUCTION FENCE	---
DEMO UTILITIES	---
DEMO CURB AND GUTTER	---
DEMO EXISTING HARDSCAPE	---
EXISTING ASPHALT	---
EXISTING CONCRETE	---



CONSTRUCTION DOCUMENTS

		<div>CONSULTANTS:</div> <div><div><div><div><div></div><div>Calibre</div></div><div>Calibre</div><div>9090 S RIDGELINE BLVD, SUITE 105</div><div>HIGHLANDS RANCH COLORADO 80129</div><div>PHONE (303) 730-0434</div></div><div><div><div></div><div>Albertson Engineering Inc.</div></div><div>ALBERTSON ENGINEERING, INC.</div><div>315 NORTH MAIN AVENUE, SUITE 200</div><div>SIoux FALLS, SOUTH DAKOTA 57104</div><div>PH: (605) 274-0880</div></div><div><div><div><div></div><div>Summit</div></div><div>Summit Fire Consulting</div><div>575 MINNEHAHA AVE WEST</div><div>ST. PAUL, MINNESOTA 55103</div><div>(612) 387-7050</div></div></div></div></div>		<div><div><div></div><div>Seal</div></div></div>	<div>ARCHITECT</div> <div><div><div><div></div><div>Fourfront</div></div><div>FOURFRONT DESIGN, INC.</div><div>FOURFRONT DESIGN, INC.</div><div>517 7TH STREET</div><div>RAPID CITY, SOUTH DAKOTA</div><div>57701</div><div>PH: (605) 342-9470</div><div>FAX: (605) 342-2377</div><div>WWW.FOURFRONTDESIGN.COM</div></div></div>	<div><div>Drawing Title</div><div>DEMOLITION PLAN</div><div><div>Approved: Project Director</div><div>FARGO VAHCS</div></div></div>	<div><div>Project Title</div><div>EXPAND BLDG. 1 FOR PRIMARY CARE</div><div><div>Location</div><div>2101 ELM STREET FARGO, ND 58102</div></div><div><div>Date</div><div>11/16/2021</div><div><div>Checked</div><div>JAG</div><div><div>Drawn</div><div>WFP</div></div></div></div></div>	<div><div>Project Number</div><div>437-315</div><div><div>Building Number</div><div>1</div></div><div><div>Drawing Number</div><div>CD100</div><div><div>Dwg. 10 of 128</div></div></div></div>	<div><div>Office of Construction and Facilities Management</div><div><div><div></div><div>Department of Veterans Affairs</div></div></div></div>
<div>Revisions:</div> <div></div>		<div>Date</div> <div></div>							